

# Park Shelters

We are focused on beautiful and functional products for any urban setting.



---

We offer high quality,  
contemporary and  
environmental design  
aspects in open space,  
urban park and public  
furniture ideas.

16

PARK  
SHELTER  
OPTIONS



80%

RECYCLED  
ALUMINIUM



1,500+

NATIONAL  
PROJECTS



# Why Terrain Group



**Australian Made**



**Built to last**



**Tailored Site  
Specific  
Solutions**



**Dedicated  
Installation  
and Project  
Management**



**On time  
supply always**



## Park Shelters

**Terrain Elements is all about bringing outdoor spaces to life & we can do so with the addition of shade and structures we can offer.**

Shade in public spaces plays a important role as users of these places can gather, enjoy the natural environment and appreciate our parks and reserves.

Our Elements range of Shelters has the magic of transforming urban environments into an accessible, practical and enjoyable experience.

**Ignite your next project with Terrain Group.**







### Akiva Shelter

The Akiva Shelter combines sleek, modern lines with a Insulated roof to create a shelter that is eye catching and unique, yet incredibly comfortable and functional.

**Size:** 3m x 3m, 6m x 3m, 4m x 4m, 6m x 4m

**Frame:** Choice of clear or colour anodised aluminium

**Roof:** Insulated Roof

**Ground Fixing:** Surface Fix | Subsurface Fix | In Ground Fix



### Barossa Wave

A wave like roof, the Barossa Wave Shelter is perfect for any coastal setting. Constructed using structural grade anodised aluminium, its practical and durable.

**Size:** 3m x 3m, 4m x 3m, 5m x 3m, 6m x 3m, 8m x 3m, 10m x 3m, 12m x 3m, 15m x 3m, 3m x 4m, 4m x 4m, 5m x 4m, 6m x 4m, 8m x 4m, 10m x 4m, 12m x 4m, 15m x 4m

**Frame:** Choice of clear or colour anodised aluminium

**Roof:** Standard COLORBOND® colours

**Ground Fixing:** Surface Fix | Subsurface Fix | In Ground Fix



### Capricorn Arbor

The Capricorn Arbor Shelter is an open roof design, perfect for say a foliage canopy. The tough anodised aluminium structure means it can withstand the moisture and exposure to the elements that such a design would experience, typically leaving a timber structure with a very short lifespan.

**Size:** 4m x 4m, 6m x 4m

**Frame:** Choice of clear or colour anodised

**Ground Fixing:** Surface Fix | Subsurface Fix | In Ground Fix



### Capricorn Shelter

The Capricorn Shelter is the ultimate, classic sloping style shelter.

Featuring our tough anodised aluminium construction, for a long life, especially in harsh coastal locations.

**Size:** 3m x 2m, 2m x 3m, 3m x 3m, 4m x 3m, 5m x 3m, 6m x 3m, 8m x 3m, 10m x 3m, 12m x 3m, 15m x 3m, 3m x 4m, 4m x 4m, 5m x 4m, 6m x 4m, 8m x 4m, 10m x 4m, 12m x 4m, 15m x 4m, 4m x 5m, 5m x 5m, 8m x 5m, 10m x 5m, 12m x 5m, 15m x 5m, 6m x 6m, 8m x 6m

**Frame:** Choice of clear or colour anodised aluminium

**Roof:** Standard COLORBOND® colours

**Ground Fixing:** Surface Fix | Subsurface Fix | In Ground Fix





### Capricorn Triple

The Capricorn Triple Shelter draws its name from its three tiered structure, featuring a higher central section to break up the lines of the overall structure.

**Size:** 4m x 4m Middle 6m x 4m

**Frame:** Choice of clear or colour anodised aluminium

**Roof:** Standard COLORBOND® colours

**Ground Fixing:** Surface Fix | Subsurface Fix | In Ground Fix



### Custom Shelters

Our impressive range of shelters gives our clients the flexibility to customise any of our designs to create their ideal custom shelter.

**Size:** Various sizing available and framing to suit

**Colour Options:** Manufactured from maintenance free 20um anodised aluminium

**How this product is fitted together:** Supplied with 316 stainless steel anti vandal fixings

**CAD drawing:** Available upon request



### Modina Shelter

Taking shelters to a new level, the Modina Shelter with its modern angles, integrates privacy screening and flat roofing.

**Size:** 4m x 4m or 4m x 6m

**Frame:** Choice of clear or colour anodised aluminium

**Roof:** Standard Bondor Colours

**Ground Fixing:** Surface Fix | Subsurface Fix | In Ground Fix



### Moreton Bay

The Moreton Bay concept shelter is modern, sleek and sturdy.

The anodised aluminium construction, combined with a Insulated roof makes it extremely durable.

**Size:** 3m x 3m, 4m x 4m, 5m x 5m, 6m x 3m

**Frame:** Choice of clear or colour anodised aluminium

**Roof:** Standard Bondor Colours

**Ground Fixing:** Surface Fix | Subsurface Fix | In Ground Fix



## Portside Shelter

Terrain's Portside Shelter offers classic gabled lines with a medium pitched, COLORBOND® roof.

Our tough anodised aluminium construction ensures low maintenance and an incredibly long lifespan, even in the harshest of Australian environments.

**Size:** 2m x 3m, 3m x 3m, 4m x 3m, 6m x 3m, 2m x 4m, 3m x 4m, 4m x 4m, 6m x 4m

**Frame:** Choice of clear or colour anodised aluminium

**Roof:** Standard COLORBOND® colours

**Ground Fixing:** Surface Fix | Subsurface Fix | In Ground Fix



## Rotunda Shelter

As the name suggests, the Rotunda Shelter is round and gives a Gazebo effect.

Suitable for parks and gardens, the shelter is decorative and offers ample shade.

**Size:** Standard | 8.0m diameter

**Frame:** Steel frame, hot dip galvanised & powder coated to specified colour

**Roof:** Standard COLORBOND® colours in Custom Orb profile

**Trim:** Pressed COLORBOND® material

**Mounting Type:** In Ground Fix



## Seaside Bus Shelter

The Seaside bus shelter is constructed using structural grade anodised aluminium. The bus shade structure is as practical and durable as you can get with COLORBOND® roof sheeting, anodised anti-graffiti finishes and tamperproof, stainless steel fixings.

**Size:** 3.5m x 1.5m, or build to requirements

**Frame:** Choice of clear or colour anodised aluminium

**Roof:** Standard COLORBOND® colours

**Ground Fixing:** Surface Fix | Subsurface Fix | In Ground Fix



## Seaside Shelter

The Seaside Shelter's unique design offers a combination of modern and classic styling in one impressive shelter. The curved roofline is perfect for spanning larger areas, for a modern look, offering strength and sturdiness in harsh environments.

**Size:** 3m x 2m, 2m x 3m, 3m x 3m, 4m x 3m, 5m x 3m, 6m x 3m, 8m x 3m, 10m x 3m, 12m x 3m, 15m x 3m, 3m x 4m, 4m x 4m, 5m x 4m, 6m x 4m, 8m x 4m, 10m x 4m, 12m x 4m, 15m x 4m

**Frame:** Choice of clear or colour anodised aluminium

**Roof:** Standard COLORBOND® colours

**Ground Fixing:** Surface Fix | Subsurface Fix | In Ground Fix



Coast Park is an initiative by the State Government of South Australia to develop a linear park along the Adelaide coast line, extending from North Haven to Sellicks Beach. The project is a priority project for Greater Adelaide's 30 Year Plan, and 31km of the Coast Park exists within the City of Onkaparinga area.



**Proud to be a part of Onkaparinga's Coast Park which is an integral part of the Foreshore Access Plan for Greater Adelaide.**



### **Skillion Bus Shelter**

The Skillion Bus Shelter draws inspiration from its larger Skillion Shelter configuration, but adds side and rear screening, making it perfect for use as a bus shelter, or alongside sporting fields as player or spectator boxes.

**Size:** 3.5m x 1.5m, or build to requirements

**Frame:** Choice of clear or colour anodised aluminium

**Roof:** Standard COLORBOND® colour

**Ground Fixing:** Surface Fix | Subsurface Fix | In Ground Fix



### **Skillion Shelter**

The Skillion shelter is constructed using structural grade anodised aluminium. Our shade structures are as practical and durable as you can get with COLORBOND® roof sheeting, anodised antigraffiti finishes and tamper-proof, stainless steel fixings.

**Size:** 3m x 2m, 2m x 3m, 3m x 3m, 4m x 3m, 5m x 3m, 6m x 3m, 8m x 3m, 10m x 3m, 12m x 3m, 15m x 3m, 3m x 4m, 4m x 4m, 5m x 4m, 8m x 4m, 10m x 4m, 12m x 4m, 15m x 4m

**Frame:** Choice of clear or colour anodised aluminium

**Roof:** Standard COLORBOND® colours

**Ground Fixing:** Surface Fix | Subsurface Fix | In Ground Fix



### **Sports Cantilever**

The Sports Cantilever Shelter is ideal for use at sporting grounds, bus stops, or anywhere where a slimline shelter is perfect.

**Size:** 4m x 1.8m, 6m x 1.8m

**Frame:** Choice of clear or colour anodised aluminium

**Roof:** Standard COLORBOND® colours

**Ground Fixing:** Surface Fix | Subsurface Fix | In Ground Fix



### **Walkway Arbor**

The Walkway Arbor Shelter is an open roof design, perfect for a foliage canopy. This flat roof design is ideal for spanning walkways in garden landscapes. The tough anodised aluminium structure can withstand the moisture and exposure to the elements that such a design would experience, typically leaving a timber structure with a very short lifespan.

**Size:** 4m wide by any length (up to 100m)

**Frame:** Choice of clear or colour anodised

**Ground Fixing:** Surface Fix | Subsurface Fix | In Ground Fix



## Aluminium TimberMatch Range

TimberMatch is a unique coating that can be applied to extruded aluminium.

It uses sublimation, which is a process whereby a substance changes from a solid state directly into gas. This process is used for powder coating and involves the desired image being first printed onto a special paper or film. This film or paper is then held hard against a special powder coating using vacuum. The image is then transferred under controlled conditions of heat and pressure, directly into the powder coating. The sublimation ink penetrates the full depth of the powder coating, and the image becomes an integral part of the surface.



### White Base



### Yellow Base



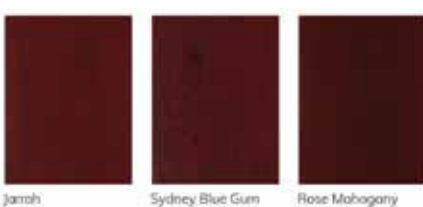
### Orange Base



### Light Brown Base



### Red Brown Base



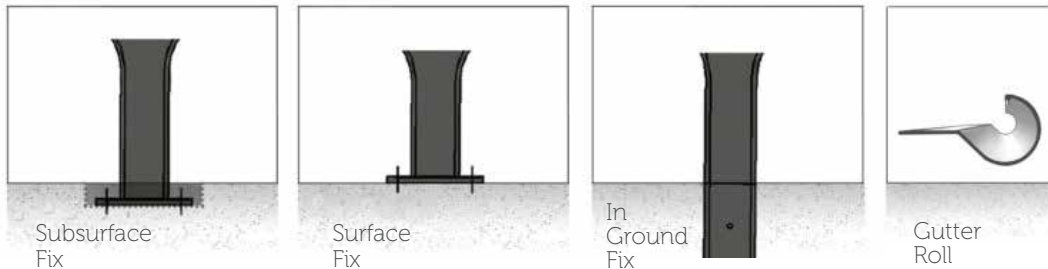
### Dark Brown Base



## Anodised Colours



## Ground Fixing Options



## Screening

Add the finishing touches to any Terrain shelter with our impressive and fully customisable range of anodised Aluminium Louvre Shelter Screening.

Providing protection from the wind and other elements, increasing privacy, or adding a custom design, our design team can create solutions that are as visually impactful as they are practical.



## Anodised Aluminium

Anodising is an electrochemical process that converts the metal surface into a durable, corrosion-resistant, anodic oxide finish.

Features of anodised aluminium

- > **Easy removal of graffiti**
- > **Perfect for coastal locations**
- > **The reflective qualities of anodising aluminium make it cooler than steel or timber**



## Project Management & Delivery

Terrain Group are with you every step of the way, taking care of your project from consultation to procurement, custom design, supply & delivery.



We have the dedicated team on hand to assist you with;

- > Demolition
- > Building & Development approvals
- > Designing & Engineering
- > Consultation
- > Procurement
- > Site works & preparation
- > Installation
- > Commission

## What our customers say....

"I've, over the years, in my previous life, dealt with many companies, and I know when I see good customer service. And [Terrain] know actually how to service clients very, very well! ...hassle free installation".

**Rob Harding** - Secretary, Rotary Club of Somerton Park

"Terrain Group recently completed a project for G-Force Building and Consulting at the Aldinga Beach Children's Centre – this included installing a Seaside Shelter over an existing sandpit. We were extremely happy with the communication, quality and service that was provided throughout the project. We highly recommend Terrain Group for any leisure and recreational facilities".

**Alex Faggionato** - Project Manager, G-Force Building and Consulting Pty Ltd

**“We understand that an off the shelf solution may not suit every application, therefore, we offer our custom furniture to ensure that any and every idea can come to life”.**

Steve Selby, Director



**Head Office**

FreeCall: 1800 335 112

Email: [sales@terraingroup.com.au](mailto:sales@terraingroup.com.au)

[terraingroup.com.au](http://terraingroup.com.au)





# Benches Seats, & Table Settings

We are focused on beautiful  
and functional products for  
any urban setting.



---

**We offer high quality,  
contemporary and  
environmental design  
aspects in open space,  
urban park and public  
furniture ideas**

**62** BENCHES, SEATS  
& TABLE SETTING  
OPTIONS



**80%** RECYCLED  
ALUMINIUM



**1,500+** NATIONAL  
PROJECTS





## Why Terrain Group



**Australian Made**



**Built to last**



**Tailored Site  
Specific  
Solutions**



**Dedicated  
Installation  
and Project  
Management**



**On time  
supply always**



## Benches, Seats & Table Settings

**Urban furniture is a critical part of any open space environment. Pieces that accommodate for all age groups is essential.**

Our Elements range of urban furniture is focused on beautiful and functional products for any outdoor precinct.

Our experience with various projects across Australia has given us the experience to be creative and adventurous with the material we use & the furniture we design.

Our Elements range has the magic of transforming any environment into an accessible, practical and enjoyable space.





### Aspen Bench

Linear, solid and natural – the Aspen bench is a classic seat that blends in any urban surroundings. A clean and simple design, the bench seat is sturdy and functional.

**Length:** 2000mm

**Plank:** Timber



### Atrium Bench

Designed to stand out in any setting, the Atrium bench has a modern look and feel.

**Length:** 1800mm

**Plank:** Timber



### Boardwalk Bench

The Boardwalk is the quintessential Terrain Group bench. Easy to clean, even graffiti, the bench offers an enjoyable seating experience.

**Length:** 1800mm

**Plank:** Aluminium



### Boulevard Bench

A versatile bench with an organic seating surface, the Boulevard bench is made of five curved aluminium planks.

**Length:** 1800mm

**Plank:** Aluminium



### Broadwater Bench

A beautifully designed range, the Broadwater features 20um anodised aluminium planks across tabletops and benches.

**Length:** 1800mm

**Plank:** Aluminium



### Chancellor Bench

Stylish and elegant, the Chancellor bench has five planks of hardwood timber with an ergonomic curved front.

**Length:** 1800mm

**Plank:** Timber





### Eco Spectator Bench

Sleek, linear and durable, the Eco Spectator Bench is a rock solid option.

**Length:** 1800mm

**Plank:** Aluminium



### Ephraim Atrium Bench

An ideal bench seating option for both a natural space, as well as an urban precinct.

**Length:** 1800mm

**Plank:** Aluminium & Timber



### Ephraim Boardwalk Bench

The classically designed bench blends in both an urban setting and a natural surrounding.

**Length:** 1800mm

**Plank:** Aluminium & Timber



### Ephraim Boardwalk Plinth Mount Bench

This beautiful seating utilises space, ideal for both an urban setting and a natural space. The plinth mount bench is easy to maintain.

**Length:** 1800mm

**Plank:** Aluminium & Timber



### Gippsland Timber Bench

The Timber planks contrasted beautifully with extruded, aluminium edging in Gippsland Timber bench.

**Length:** 1800mm

**Plank:** Timber



### Gippsland Timber Platform

The square design with hard wood timber flanked by aluminium border provides ample seating. Unique and modern, the bench provides great visual appeal and fits into any space.

**Length:** 1200mm x 915mm

**Plank:** Timber





### Kuranda Bench

This bench is a simple, clean seat utilising natural hardwood timber planks with subtle contouring to the front of the seat.

**Length:** 1800mm

**Plank:** Timber



### Luna Bench

Luna offers endless possibilities in bench seating. The curved design offers uniqueness as well as ample seating space.

**Length:** As Required

**Plank:** Aluminium

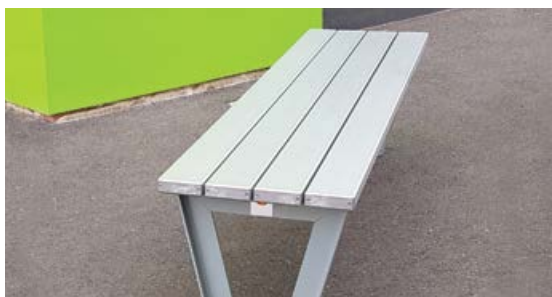


### Modular Bench

The Modular Bench combines form with function and durability to create a seating system that is not only incredibly durable, but also offers an almost endless number of configurations.

**Length:** Made to client requirements

**Plank:** Aluminium



### Monaco Aluminium Bench

Simple but striking style is what the Monaco Aluminium bench is all about. It is elegant, strong and durable. Suitable for parks, the bench is guaranteed to stay beautiful over the years as its built to withstand all weather conditions.

**Length:** 1800mm x 453mm

**Plank:** Aluminium



Available in  
TimberMatch



### Monaco Timber Bench

Strong and durable with an elegant style, the Monaco Timber bench seat is suitable for parks and gardens.

**Length:** 1800mm x 453mm

**Plank:** Timber



### Monarch Aluminium Bench

This striking bench seat is as strong as its visual appeal. The framed legs with different colour aluminium planks, gives the seat a modern and elegant look.

**Length:** 2000mm

**Plank:** Aluminium



### Monarch Timber Bench

Offering a simple yet striking style, the Monarch Timber bench design is instantly attractive.

**Length:** 2000mm

**Plank:** Timber



### Northshore Platform

A contemporary furniture statement piece, the Northshore Platform is unique and modern.

**Length:** Custom made to your requirements.

**Plank:** Timber



### Parklets

Designed to encourage people to get out and make urban outdoor settings more accessible, parklets are a relatively new concept.

**Plank:** Available in custom styles and finishes.



### Platform Aluminium Bench

Modern and unique, the platform bench will fit seamlessly into any space – be it an urban or natural environment.

**Length:** 1200mm x 915mm and 2000mm x 1835mm

**Plank:** Aluminium



### Playford Bench

The Playford bench brings a classic geometric design aesthetic to any open area. The rock solid base of the bench seat creates an altar-like presence and will be an attractive feature in any green space.

**Length:** 2000mm

**Plank:** Aluminium



### Signature Bench

Offering incredible durability, the Signature bench is sleek and minimalistic in design.

**Length: Dimensions (Small):** 1150mm Long x 375mm wide x 500mm high

**Dimensions (Large):** 1720mm Long x 375mm wide x 500mm high

**Plank:** Aluminium





## Skate Bench

Designed to not only sit and watch skaters perform their stunts but its also built for both skate boards and stunt bikes.

**Length:** 1800mm

**Plank:** Aluminium



## Spectator Bench

Sleek, linear and durable, the Spectator bench seat is solid.

**Length:** 1800mm

**Plank:** Aluminium



## Sport Bench(Standard)

The Sport bench is made for all team supporters alike.

**Length:** 1800mm

**Plank:** Aluminium



## Sport Bench(Wall mount & Stacker)

Wall mounted and stacker sport benches are designed for practicality and optimal space utilization. The sleek and durable design will support all sports players and fans.

**Length:** 1800mm

**Plank:** Aluminium



**Bunjil Place in Narre Warren, Victoria**

The first of its kind "entertainment precinct" has been turning heads since its opening in October 2017. We had the pleasure of installing our Kuranda Bench and Courtyard Seat to compliment the unique and stunning architecture of the location. Well done to everyone involved. Impressive project all!



**The impressive Bunjil Place in Narre Warren, Victoria is a site with a large range of Terrain Elements Furniture of seats and benches.**



### Citi Seat

The Citi Seat has the perfect street appeal with its classic style blending with cool urban lines.

**Length:** 2000mm

**Plank:** Aluminium



### Courtyard Seat

Simple yet beautifully designed with the warmth of Hardwood timber.

**Length:** 1800mm

**Plank:** Timber



### Eco Seat

The 100% recycled aluminium Eco seat offers a sleek modern design.

**Length:** 1800mm

**Plank:** Aluminium



Available in  
TimberMatch



### Ephraim Seat

This is an ideal design solution for both a natural space and an urban precinct.

**Length:** 1800mm

**Plank:** Timber & Aluminium



### Kingsgrove Seat

The design of Kingsgrove Seat brings an added luxury of Hardwood with pre-oiled timber slats.

**Length:** 1800mm

**Plank:** Timber



### Monaco Aluminium Seat

Elegant, strong and durable is what the Monaco Aluminium Seat is all about.

**Length:** 1800mm

**Plank:** Aluminium



Available in  
TimberMatch





### Monaco Timber Seat

Suitable for parks and gardens, guaranteed to stay beautiful over the years, The Monaco Timber Seat is stylish and strong.

**Length:** 1800mm

**Plank:** Timber



### Monarch Aluminium Seat

Offering a simple yet striking design, the Monarch Aluminium Seat is structurally strong.

**Length:** 2000mm

**Plank:** Aluminium



### Monarch Timber Seat

The Monarch collection of products, offers a linear seat design with a simple yet striking visual appeal.

**Length:** 2000mm

**Plank:** Aluminium & Timber



### Northshore Seat

Designed to stand out as a contemporary unique piece, the Northshore Seat is modern and strong.

**Length:** 2600mm or 3000mm

**Plank:** Timber



### Parkway Seat

The smooth, clean lines of the Parkway Seat, gives it a pleasant look and functional form.

**Length:** 1800mm

**Plank:** Aluminium



### Riverside Seat

The Riverside Seat is built to be extremely tough and durable, offering a simple design to be used anywhere.

**Length:** 1800mm

**Plank:** Aluminium





## Sports Seat

Made for all team supporters alike, the Sports Seat

**Length:** 1800mm

**Plank:** Aluminium

---



## Transit Seat

The design flow from back support to seating comfort makes the Transit Seat very appealing.

**Length:** 1800mm

**Plank:** Aluminium

---



## Turin Seat

An eye catching yet simple design, the Turin Seat is extremely durable.

**Length:** 1800mm, available up to 2400mm long

**Plank:** Timber

---

**Point Malcolm, Semaphore Park, South Australia**

Terrain Group was contracted to supply the benches and table settings within the park, for which a custom design was created using a combination of timber and our state of the art anodised aluminium. This allowed the architects to tie in the natural aesthetics of the park to the features installed for the community.



**Customisation of  
our existing designs  
is something that  
sets us apart.**



### 4 Sided Table Setting

The 4 sided Aluminium Table Setting is designed to bring small groups of people together.

**Length:** 1900mm x 1900mm

**Plank:** Aluminium



### Access Setting (4 Planks)

Simple yet functional, the Access Table comes with four thick extruded aluminium planks.

**Length:** 1800mm

**Plank:** Aluminium



### Access Table Setting

Access Table has clean linear lines and boasts three thick extruded aluminium planks.

**Length:** 1800mm

**Plank:** Aluminium



### Aspen Setting

Warm and natural, the Aspen Setting is solid and sturdy. It is suitable for any urban environment.

**Length:** 2000mm, available up to 6m long

**Plank:** Timber



### Broadwater Table Setting

Beautifully designed with aluminium edging and an elliptical leg design, the Broadwater Table Setting is long lasting.

**Length:** 1800mm

**Plank:** Aluminium



### Caloundra Table Setting

Square in design with a four-plank table and single plank benches, the Caloundra Table Setting offers space.

**Length:** 915mm square table with 915mm bench

**Plank:** Aluminium





### Combo 3 in 1 setting

Simple and well crafted to stand the test of time, the 3 in 1 setting is tough.

**Length:** 1800mm

**Plank:** Aluminium



### Combo 3 in 1 setting / Timber

Well crafted, simple and functional, the 3 in 1 timber setting is durable.

**Length:** 1800mm

**Plank:** Timber



### Daintree Table Setting

The warmth of timber and the strength of aluminium frame and legs, makes Daintree Setting ideal for both natural and urban spaces.

**Length:** 1800mm

**Plank:** Timber



### Eco Boardwalk Table Setting

Simple and comfortable, the Eco Boardwalk Table Setting features our highest recycled content aluminium flat planks.

**Length:** 1800mm

**Plank:** Aluminium



Available in  
TimberMatch



### Ephraim Table Setting

This is the ideal solution for both a natural space or an urban precinct.

**Length:** 1800mm

**Plank:** Timber & Aluminium



### Gardens Table Setting

Simple in design with easy wheelchair access, Gardens Table Setting is comfortable and durable.

**Length:** 1800mm

**Plank:** Aluminium



### Gippsland Setting

The Hardwood Timber planks are beautifully shown off in Gippsland Setting, surrounded by extruded aluminium edging.

**Length:** 1800mm

**Plank:** Timber



### Monarch Table Setting

The simple and striking Monarch table Setting is built to last. The linear table design is as structurally strong as it is visually appealing.

**Length:** 1800mm

**Plank:** Aluminium



### Signature Setting

The signature Setting is wheelchair compliant that allows conventional seating as well as easy wheelchair access in one great ensemble. Designed by Guymer Bailey Architects, it is modern and comfortable.

**Length: Small:** 2570mm x 2230mm/  
**Large:** 2710mm x 3115mm

**Plank:** Aluminium



Available in  
TimberMatch

### Monaco Aluminium Table Setting

Elegant, strong and stunning Aluminium Table Setting suitable for parks and gardens.

**Length:** 1800mm

**Plank:** Aluminium



### Monaco Timber Table Setting

Ideal for parks and gardens, the Monaco Timber Table Setting is elegant and sturdy.

**Length:** 1800mm

**Plank:** Timber



### Playford Table Setting

A classic geometric design makes Playford Table Setting suitable for any open public space.

**Length:** 2000mm

**Plank:** Aluminium



### Sturt Table Setting

The Sturt Table Setting is designed to tie in the natural environment with urban aspects.

**Length:** 1800mm

**Plank:** Aluminium & Timber



# Aluminium TimberMatch Range

TimberMatch is a unique coating that can be applied to extruded aluminium.



It uses sublimation, which is a process whereby a substance changes from a solid state directly into gas. This process is used for powder coating and involves the desired image being first printed onto a special paper or film. This film or paper is then held hard against a special powder coating using vacuum. The image is then transferred under controlled conditions of heat and pressure, directly into the powder coating. The sublimation ink penetrates the full depth of the powder coating, and the image becomes an integral part of the surface.

## White Base



## Yellow Base



## Orange Base



## Light Brown Base



## TimberMatch examples





## Anodised Colours (Aluminum Planks)

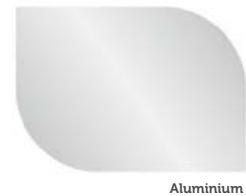


## Anodised Aluminium

Anodising is an electrochemical process that converts the metal surface into a durable, corrosion-resistant, anodic oxide finish.

Features of anodised aluminium

- > Easy removal of graffiti
- > Perfect for coastal locations
- > The reflective qualities of anodising aluminium make it cooler than steel or timber



## Powdercoated Frame Colours

### Standard Colours



### Extended Colours



## Ground Fixing Options



## Custom Furniture

Our bespoke design team can tailor make products to suit any design requirements, modifying existing products with tailored parts or creating a customized solution from the ground up, we can build to any and every specification.

Superior quality materials are used to make the products in our state of the art manufacturing facilities across Australia. We offer meticulous attention to detail and maintain industry-leading quality control for every piece we produce.

We have strong commitment to the finished design of all our products and therefore we are always looking at new materials and manufacturing techniques to ensure we remain the industry leaders that our clients have come to know, and that our products withstand the test of time.



## What our customers say....

I've, over the years, in my previous life, dealt with many companies, and I know when I see good customer service. And [Terrain] know actually how to service clients very, very well! ...hassle free installation.

**Rob Harding** - Secretary, Rotary Club of Somerton Park

Terrain Group recently completed a project for G-Force Building and Consulting at the Aldinga Beach Children's Centre – this included installing a Seaside Shelter over an existing sandpit. We were extremely happy with the communication, quality and service that was provided throughout the project. We highly recommend Terrain Group for any leisure and recreational facilities.

**Alex Faggionato** - Project Manager, G-Force Building and Consulting Pty Ltd



**“We understand that an off the shelf solution may not suit every application, therefore, we offer our custom furniture to ensure that any and every idea can come to life”.**

Steve Selby, Director



**Head Office**

FreeCall: 1800 335 112

Email: [sales@terraingroup.com.au](mailto:sales@terraingroup.com.au)

[terraingroup.com.au](http://terraingroup.com.au)





# All Aluminium Series Toilet Buildings

All aluminium series public restroom design now available to complement your open space upgrade



# All Aluminium Series Toilet Buildings



## Lighting Fixtures

Flush mounted aluminium LED strip lights, integrated into roof members.

## Ventilation Screens

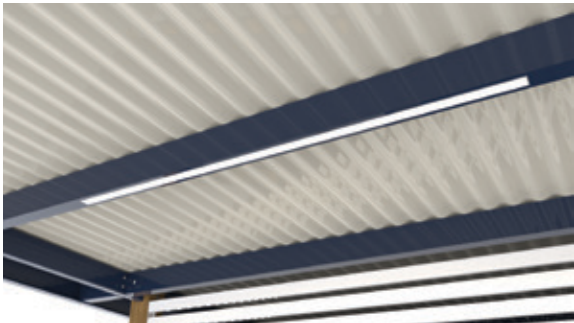
Flush mounted batten screens for privacy, natural light & ventilation.

## Crime Prevention

No internal shelves or hidden areas to prevent and deter criminal activity.







### Ventilation Screens

Design options for pattern side ventilation screens

### Timber Look Finish

Timber effect powdercoated aluminium finishing option

## A look inside

---







## What's been considered

### Aluminium construction

A more sustainable option due to its lifespan and recyclability, the Terrain Group All Aluminium Series Toilet Building range offers a lightweight all aluminium construction.

### Aesthetic versatility

Design options available to personalise the All Aluminium Series Toilet Building range to suit the context of any public space.

### Design standards

Designed to be AS1428.1 compliant in today's standards and for indefinite future standards revisions.

### Smart systems

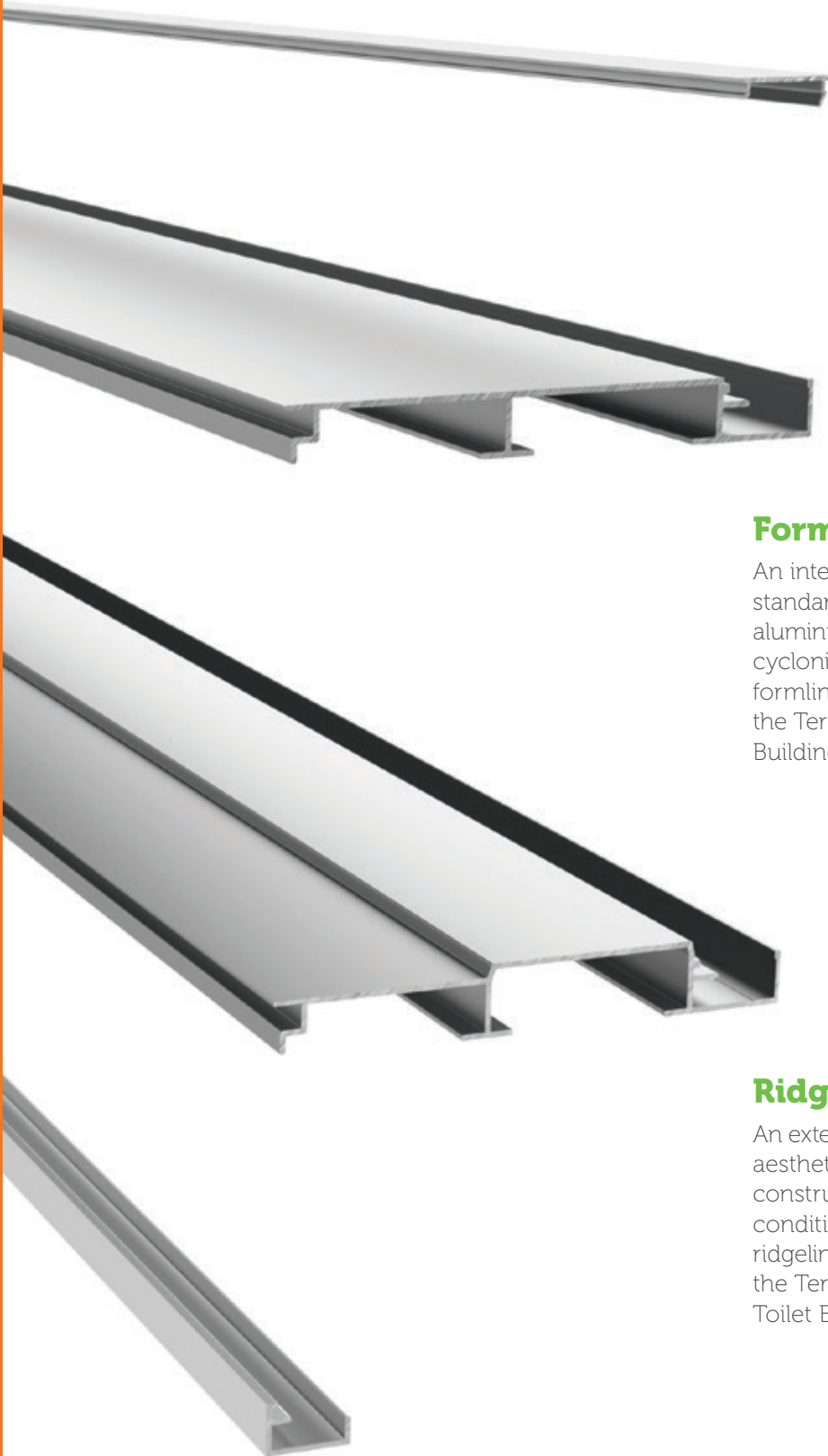
Integration of modern technologies advances the Terrain Group All Aluminium Series Toilet Building range into the present day.

### Durability and security

Use of vandal resistant finishes and crime preventative design features.

## Unique Aluminium Cladding System

---



### Formline

An internal cladding system setting new standards for maintenance and hygiene, with aluminium construction capable of enduring cyclonic conditions and clip together assembly, formline has been designed exclusively for the Terrain Group All Aluminium Series Toilet Building range.

### Ridgeline

An external cladding system introducing a new aesthetic into the industry, with aluminium construction capable of enduring cyclonic conditions and clip together assembly, ridgeline has been designed exclusively for the Terrain Group All Aluminium Series Toilet Buildings range.



# Finishes

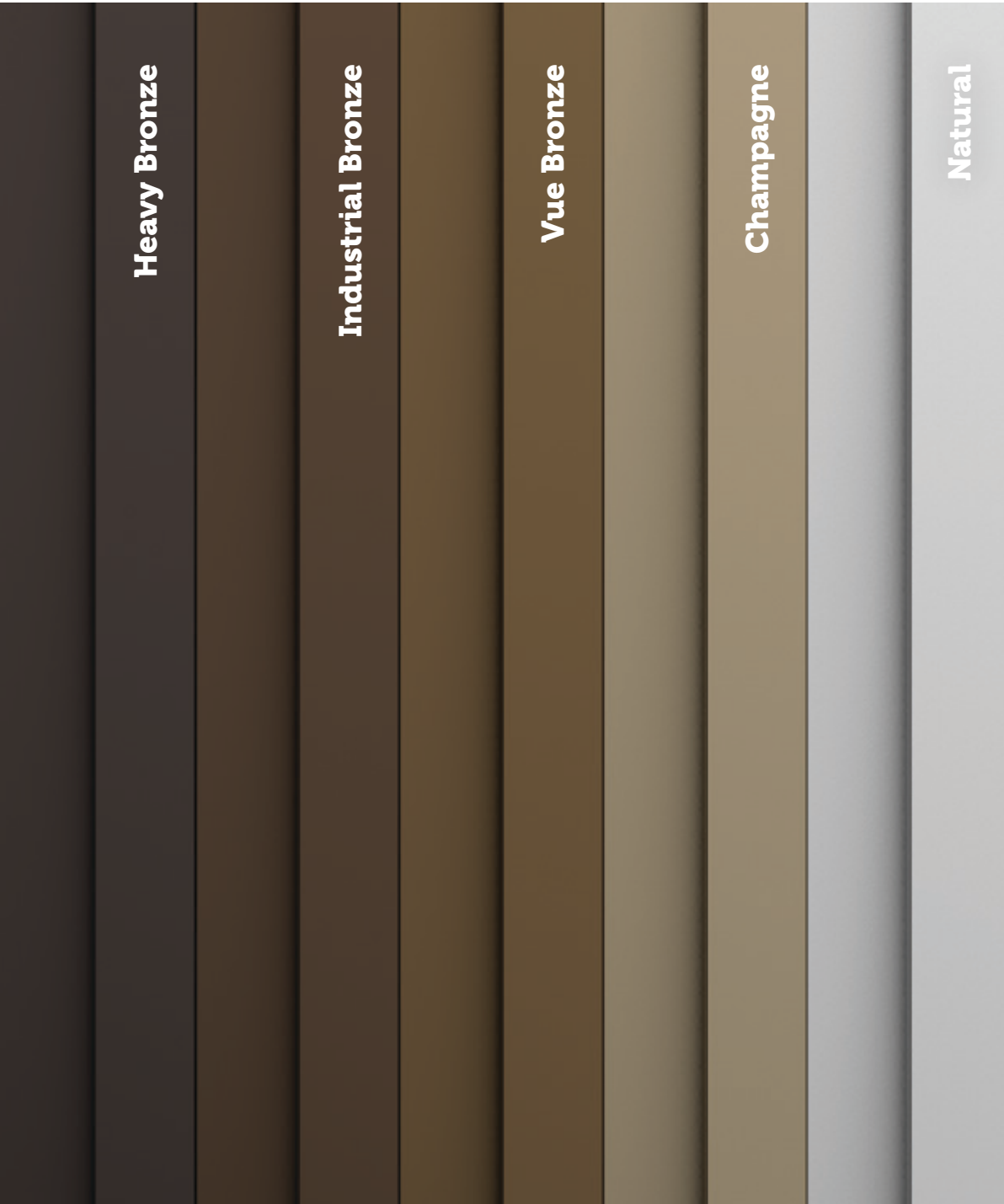
Terrain Group offers the entire construction of the All Aluminium Series Toilet Building range to be finished in anodising, powdercoating or timbergrain finish, in a wide variety of available colours. Anodising is Terrain Group's most robust finish, benefiting from a service life of 20+ years with excellent scuff and impact resistance.

## Powdercoat Colours

Available in the DULUX powdercoat colour range.



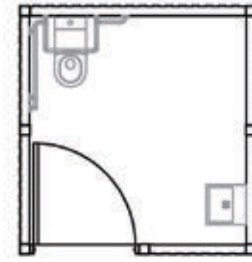
## Anodised Aluminium Colours



## All Aluminium Series Toilet Building-001

**Layout:** 1x Unisex Accessible Cubicle

**Size:** 4660 x 3135 mm

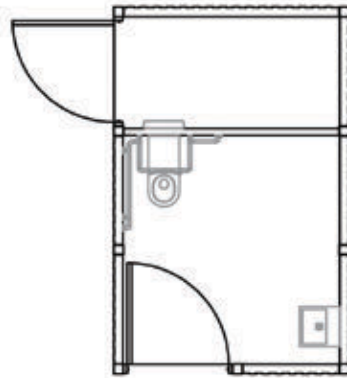




# All Aluminium Series Toilet Building-001S

**Layout:** 1x Unisex Accessible Cubicle  
1x Large Service Duct

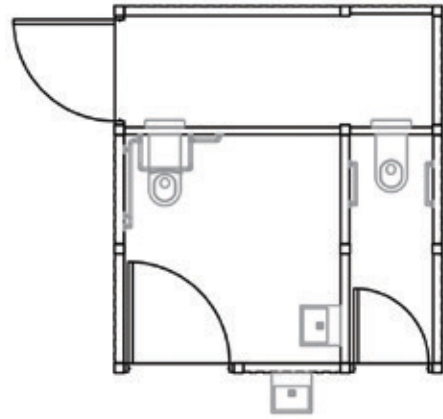
**Size:** 6005 x 3135 mm



## All Aluminium Series Toilet Building-002S

**Layout:** 1x Unisex Accessible Cubicle  
1x Unisex Ambulant Cubicle  
1x Large Service Duct

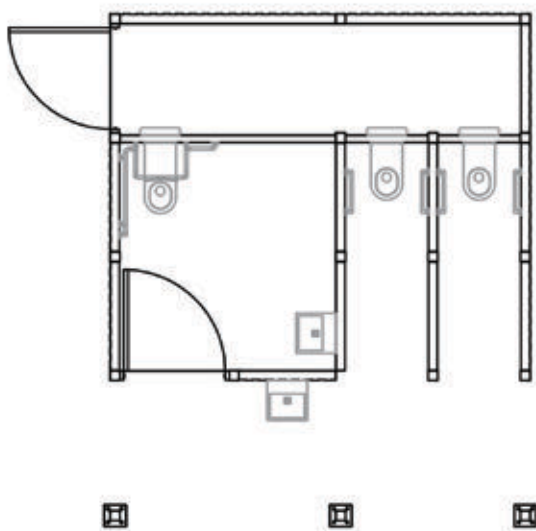
**Size:** 6005 x 4190 mm



## All Aluminium Series Toilet Building-003S

**Layout:** 1x Unisex Accessible Cubicle  
2x Unisex Ambulant Cubicles  
1x Large Service Duct

**Size:** 6005 x 5255 mm

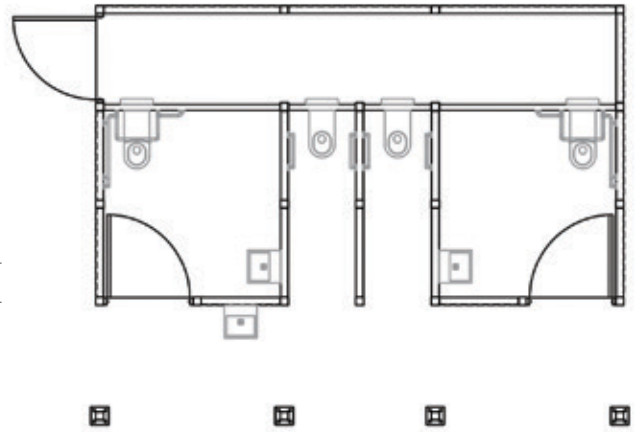




## All Aluminium Series Toilet Building-004S

**Layout:** 2x Unisex Accessible Cubicles  
2x Unisex Ambulant Cubicles  
1x Large Service Duct

**Size:** 6005 x 7765 mm





**A well-designed restroom in a public space must offer clean & hygienic facilities, be welcoming, and above all, provide a high level of privacy for all users.**

## Features

---



### Maintenance

Terrain Group has focused on keeping the overall maintenance of the All Aluminium Series Toilet Building range to be as minimal as possible. From the use of corrosion and graffiti resistant finishes, to the design of the internal cladding, all aspects have been considered to ensure ease of maintenance.



### Installation

Terrain Group All Aluminium Series Toilet Building range will be delivered in kit form, incorporating a fully machined aluminium construction, along with a comprehensive and efficient packing system allowing for ease of transport and installation. All Aluminium Series Toilet Building kits will be supplied with detailed assembly instructions to ensure smooth assembly processes.



### Design Standards

Terrain Group has taken close consideration to ensure the All Aluminium Series Toilet Building range complies with Australian standards for access and mobility (AS 1428). All design aspects including doorways, circulation and access spaces have been oversized to ensure compliance with future standards amendments.



### Design Options

Terrain Group has ensured the All Aluminium Series Toilet Building range is able to be tailored to meet all project requirements. With a multitude of design options to personalise each building according to their locations and existing public spaces.



### User Experience

Terrain Group strives to provide a safe and comfortable environment for all users, incorporating crime preventative design principles, ergonomics and accessibility features into the All Aluminium Series Toilet Building range. Emphasis on hygiene was a crucial component to the design of the All Aluminium Series Toilet Building range.



### Lifecycle

The Terrain Group All Aluminium Series Toilet Building range is built from quality materials, made to last. The aluminium construction and range of available finishes allow for resistance against corrosion and vandalism in any public environment, ensuring a long overall lifespan of the buildings.



## Project Management & Delivery

Terrain Group are with you every step of the way, taking care of your project from consultation to procurement, custom design, supply & delivery.



We have the dedicated team on hand to assist you with:

- > Demolition
- > Building & Development approvals
- > Designing & Engineering
- > Consultation
- > Procurement
- > Site works & preparation
- > Installation
- > Commission

## What our customers say....

"The professionalism and commitment to achieving a high standard the construction of our facility is a credit to your company and the individuals involved."

**Grant Drummond** – General Manager Operations, District Council of Ceduna

"Terrain Group personnel worked closely with the Rural City of Murray Bridge to deliver the construction and installation of two new modern public toilet facilities. The restroom at Adelaide Road Linear Park, Murray Bridge, compliments the newly upgraded linear parklands. The new facility at Stone Wall Park, next to the Wellington Ferry, also features an Ezy Dump station which has proved popular for travellers with Recreational Vehicles and caravans. Any challenges that arose during project implementation were dealt with efficiently and effectively by the Terrain Group."

**Heather Barclay** – General Manager, Assets and Infrastructure Rural City of Murray Bridge

**“At Terrain Group we realise planning for public restroom facilities can be time consuming, that’s where our expertise in open space can assist you, from early planning to entire project deliverability – it’s just what we do.”**

Steve Selby, Director



#### Head Office

FreeCall: 1800 335 112

Email: [sales@terraingroup.com.au](mailto:sales@terraingroup.com.au)

[terraingroup.com.au](http://terraingroup.com.au)

