

## Region Council Position

### Background

Parks and Leisure Australia (PLA) is the leading industry association for professionals in the sector, servicing and advocating for the industry for over 90 years, since 1926. Through a broad range of services, we support members to provide opportunities that strengthen communities through good use of leisure time for the social, environmental, economic and physical wellbeing of all Australians. We are *'The People Behind the Places'*. Our vision is for Australia to be the most liveable country in the world, renowned for its parks, sport and recreation facilities that provide the foundation for healthy communities and liveable towns and cities.

For further information please visit <https://www.parksleisure.com.au/> )

### Context

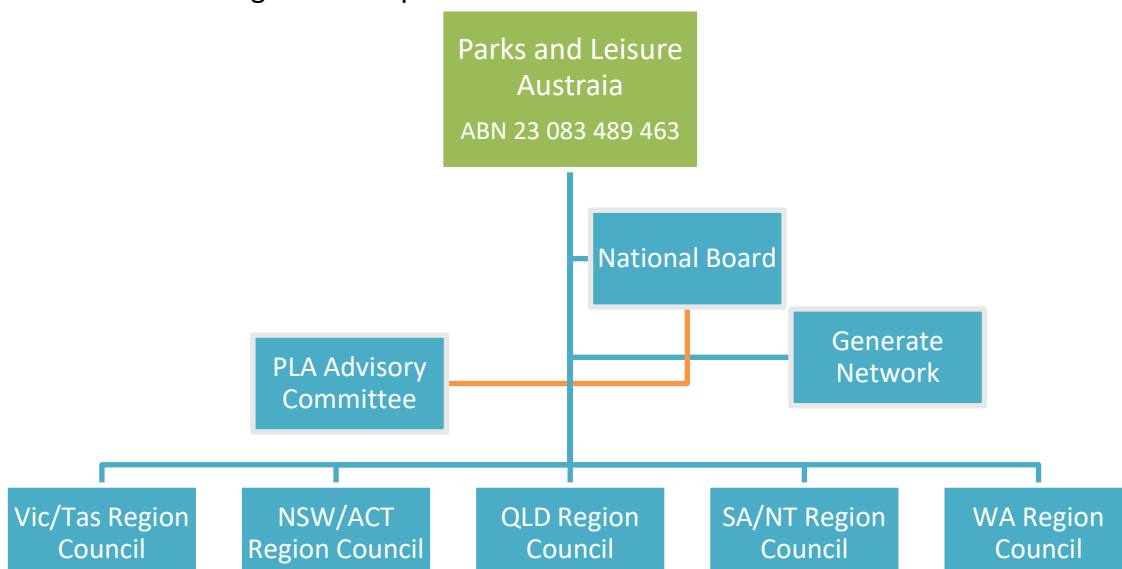
Our aim and mission is to build, serve and develop a strong and united parks and leisure industry in Australia. As the national peak body we support our members through the provision of training, professional development, research, advocacy and provide a range of products and services to support you and the industry.

PLA is governed by a national board comprising of a representative from each of the five regions and co-opted members who provide specific professional skills. The five regions are:

- New South Wales / Australian Capital Territory
- Queensland
- South Australia/Northern Territory
- Victoria / Tasmania
- Western Australia

### PLA Structure

PLA is a not-for-profit company limited by guarantee and operates in accordance with relevant acts and legislative requirements.



## **Region Council**

PLA elects councillors for each Region annually. Each year one-third of the Council members shall retire from office and can be eligible to be re-elected. Once elected, the Councillor will remain on the Council for a three year term. There are 10 Region Councillors on each Council and co-opted members as required. The Region Council provides and delivers services through a voluntary system – supported by a contracted secretariat service.

PLA is committed to equal opportunity and employing people of any age and cultural background. To ensure governance is broadly representative of the community the Board is keen to receive applications from women, people under the age of 40 and people from diverse cultural backgrounds.

## **Region Council Responsibility**

Working under guidance of the National Board, and within the guidelines of PLA policies, procedures and constitution, the council works with the contracted executive officer to respond to region membership needs through the development of customised region products and services.

Each Region Council is responsible for the growth of both the region and the National entity through advocacy and representation, communications and continuing professional practice initiatives. Region Councils are the face-to-face aspect of the PLA organisation and are an essential component of the PLA organisational structure.

The Region Council, together with the contracted secretariat service develop and maintain a range of region services which meet National Board performance levels whilst servicing the region membership. This is delivered through information on newsletters, region events, training and professional development opportunities, networking, recognition of excellence, region representation, advocacy and membership liaison and retention.

## **Region Council Position Key Requirements**

1. Region Council members may be required to contribute approx. six to ten hours per month to the role, this may be more or less depending on the events being held and your involvement.
2. A portfolio system is generally adopted within region council, enabling the sharing and division of focus. The portfolio system is based on the strategic plan set by the national board.
3. The Region Council member must be a current member of PLA, either individually or as part of a corporate membership.
4. Region Councils have regular meetings at a minimum of four meetings per year and some strategic planning activities as required.
5. Involvement in functions as determined by the Region Council.

6. Region Councils may be called to participate in National Standing committees through nominated representation.
7. The Region's National Board Director acts on behalf of the National Board and is responsible for ensuring Region Council functions relating to the National Board, are supported and completed.
8. Unless otherwise determined, a region council shall comprise ten members and is constituted as follows: President - one; Deputy-President - one; Secretary - one; Treasurer - one; Members - up to six

For information below is a link to the constitution located on the Parks and Leisure Australia website. Specifically the section related to region council are points 68 – 76.

[PLA Website - scroll to bottom to download Constitution](#)

[Strategic Plan](#) – the current plan 'Towards Twenty 21' may be found by clicking the link. A new Strategic Plan 'Towards 2025' is currently under development and due to be launched in September 2021.