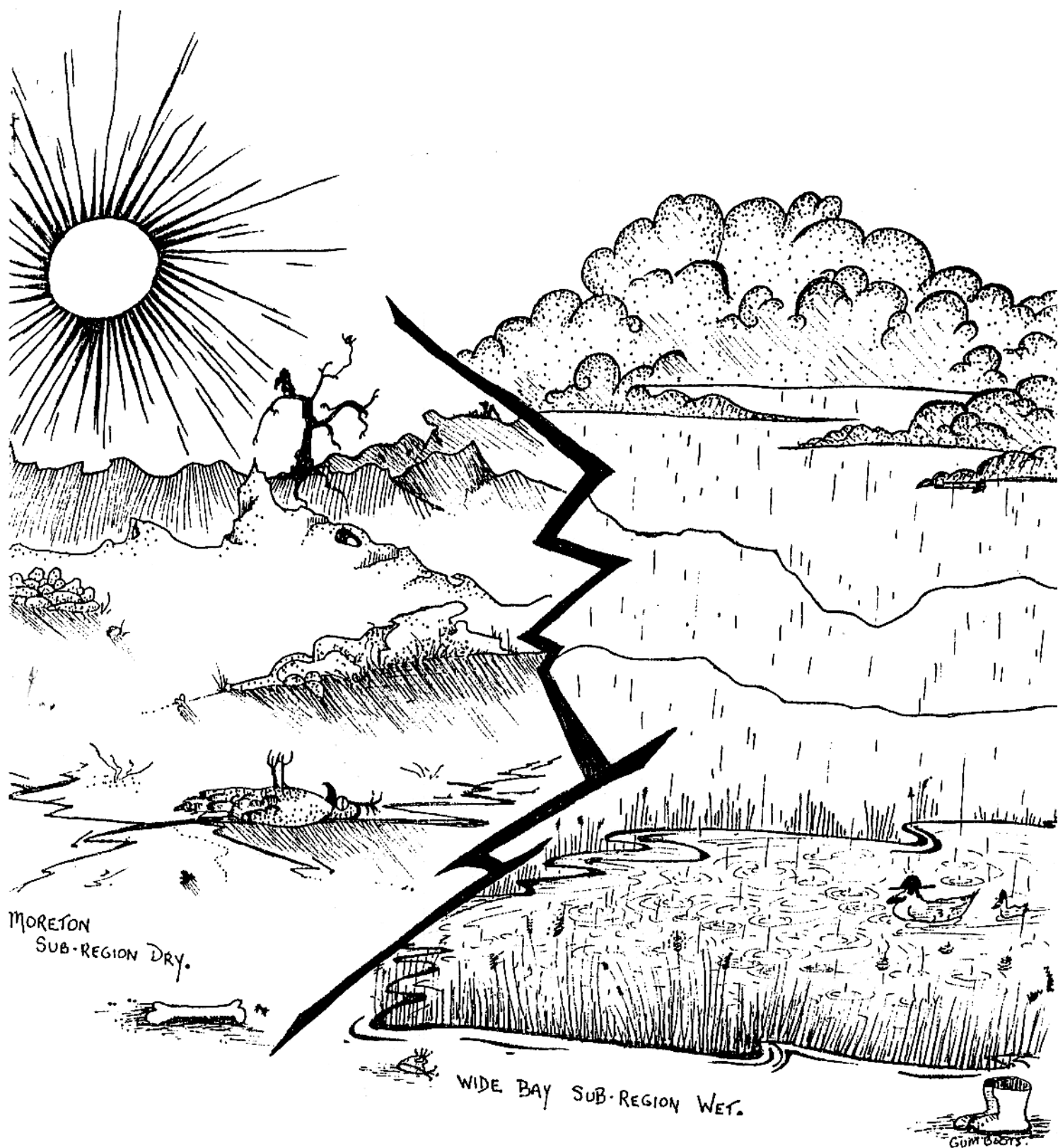


## News in the Southern Region



Vol No 5

August 1986

# Wrashtail

## Editorial

Wake up! It's another issue of Brushtail. Where are all your contributions? Go on - make an idiot of yourself - the rest of us won't notice.

### Contentious issues

Gasp! Scurry for cover. 'Who said that?' etc, etc. Listen chaps, this newsletter is intended to foster debate and information exchange within the region.

If you want to debate something, be it inapplicable awards, accommodation, too much work and not enough staff, head office, weeds, concessionaires, having to handle dangerous snakes without any training, too much development, not enough development, Service resource allocation, the meaning of life and everything - then speak your mind via these pages.

### Editorial policy:

The editorial knife is used only where direct personal attacks are made. If Arthur Blogs is causing you aggrievation then go and beat the stuffing out of him, don't clog these pages with personal grievances.

Now, if one of youse is keen enough to discuss anything about what the Service is doing, there is no obligation on anyone else to respond. If nothing else, the opportunity to rant a bit will at least clear the air. On the other hand such open discussion may enlighten us all and make our objectives that much easier to reach. Don't let the potential aprobrum of the gods within, or without, the Service stifle your ideas.

If this newsletter is to achieve its objective of opening up communication, then frank discussion is necessary. Any interference with that principle means that we may as well not waste our time putting 'Brushtail' together.

Dave Batt

For all of you who wonder what we are supposed to be doing in this job for, and perhaps, even how to do it, here's a good, solid foundation on which to build.

### 'Extinction and the threat thereof.'

Extracts from a lecture given by Dr Paul Ehrlich at Murdoch University in Perth in June 1986 and broadcast on the ABC Radio's Science Show.

'At the moment there are about 4.9 billion people on this planet. I've been alive for 53 years...

...In 1932, when I was born there were only about 2 billion people in the world at that time. That is, in the time of my short life, the world's population has much more than doubled. All of the increase in population size from the year zero - (where ever you put it - a few million or a few hundred thousand years back depending on when you define the start of humanity) - to my birthday, we managed to get up to 2 billion people...

...Now we're at 4.9, and if some of you are very unfortunate, you might actually live to see 7 or 8 billion people on this planet...

... The world is vastly overpopulated, as Australia is vastly overpopulated...

...We're living on capital, we're not living on income. We are busily exploiting a whole series of non-renewable resources, and when they're gone, we won't be able to support something even remotely like 4.9 billion people...

...It's not just the fossil fuels we're expending to maintain this vast level of overpopulation. There are other kinds... for example, our rich agricultural soils in the US and in Australia. Soils that are generated, usually, on a timescale of inches in millenia, and they're now being destroyed on a timescale of inches in decades - which means that the soil is being treated as a non-renewable resource...

...Not only that, we're treating our freshwater as a stock resource rather than one which is renewable. We're doing that, for example, in the US, and I'm sure in some places in Australia, by pumping out Pleistocene aquifers at a rate far beyond their recharge rate; by paving over recharge areas; and by injecting all sorts of toxins into the groundwater, which form 'plumes' and essentially permanently pollute it; by pumping some aquifers so fast, they literally collapse...

...In the US, there is 50 times as much groundwater under the US as what falls on the US annually...

...And beyond that is, maybe, the most important of all - our biological diversity - (genetic diversity and species diversity of the plants, animals and micro-organisms on the planet) - are also being expended...

...The amount of solar energy that is bound by the green plants is called the net primary productivity...

...What proportion of that flow of energy, that's captured by the green plants is Homo sapiens, one of the millions of species, now using and co-opting in some sense for itself...

...Of the terrestrial net primary productivity of green plants, our species is already using 40% of the energy in some sense or other...

...Now when you consider that we're using something like 40% now, and the doubling time for the human population of the planet is something like 40 years, you can see why biologists are extremely nervous about all this...

...As we destroy our capital, we are, in the process, seriously damaging the systems that can supply us with the income.

Tape recordings of the whole lecture are available from Dave Batt at Moggill.

#### SMOKE RINGS

The last two years have been ones involving expenditure of tremendous amounts of energy to improve our facilities and change direction towards our management and education.

We have also worked towards integration of all the different programs at a regional basis. This is starting to pay off and we are seeking a more 'united' Service approach rather than wildlife, parks and researchers all going different ways.

These changes have put pressures on field staff and the new administration group but you have all responded even though you might have taken on responsibilities which were way beyond your wages scales. However it is indicative of the group of people we have working for us. You all have a personal interest in improving people's perception of our nature conservation agency. Keep this up even though at times you tire and feel you don't get all the support you deserve.

We have also partly implemented our staffing adjustments to ensure we have an even spread of different skills and classifications and that these are compatible across the Districts. We will be constantly reviewing this so yell if you have ideas or are missing out.

With CEP funding possibly being reduced, the next year will be an opportunity for consolidation. This will allow us to better implement the move into better management planning and more effective education programs both on and off the Service estate. I will continue to strive for more training programs so that we can all grow with the organization.

You are all now aware of our five year programs for loan, EP staffing and special funds. I look forward to this being extended into research, interpretation, wildlife and RNC so that we can all see where we are heading and what are the **priorities**.

We have made this exercise one in which you can contribute and I look forward to **your involvement and contributions** in making changes.

Finally, I never cease to be amazed at what you are doing with the limited resources available. I hope we can gradually improve the support to you so that life will be easier. The team work that is developing in some groups is making a difficult job easier. Keep it up.

Regards  
Noel Dawson



## WILDLIFE

### Of Folk and Fauna

The greater Brisbane area boasts a vertebrate species list of well over 400! Few if any cities of the world of populations approaching one million humans could make a similar boast. To a depressingly large number of Brisbanites it would appear that this is a most unfortunate fact, as evidenced by the complaints received by the Service.

Whilst it is acknowledged that the magpie can be a dangerous bird and the possum a pain in the attic or the scruffy looking but intriguing brush turkey a messy visitor to the garden, the list of native animal 'outlaws' is long indeed.

It's all very well for these creatures to have some right to live 'in the bush' which is actually a vague sort of area out there somewhere where humans don't go, but to have the unmitigated temerity to invade the sanctity of the 'backyard', invites the 'how do I get rid of it' syndrome.

Urban humans will accept a broad range of responsibilities for animals which can include an early morning slicing of large steamy droppings of mastiffs from the sacred and manicured lawn using the household shovel. They will accept the incessant barking of these pets and even stoop to actually forking out real money to vets for their medical problems but **woe betide** the Willie wagtail who sits on his nest and whistles 'sweet pretty creature' all night long.

This is something to be 'got rid of'! Other things to be got rid of are male pee wees who face up to window panes. All reptiles whether they have legs or not are a no-no! Try convincing a die-hard who has lived 'all their life in the bush' that blue tongued lizards and Bearded dragons are **not poisonous** and you will suddenly feel the full force of folk-law versus reality.

Koalas belong in sanctuaries (Zoos) and porcupines (echidnas) get into trouble against paling fences and need to be 'rescued'. Few urbanites in Brisbane can accept that koala sightings are

reasonably common, normal and with some luck will continue to be so. Echidnas jamb themselves up against anything and everything when they feel under threat and their ability to cling, limpet like, to the bare ground using their remarkable claw structure always leads the inexperienced to believe that the creature is in dire trouble.

Sadly the koala, the echidna and for all we know the platypus are all those which must be 'got rid of' or removed for their own safety and taken out and either hidden in the bush or put in a safe place like a zoo. Such, largely is the conception of the forty perch person.

Moving out a little into the acreage dwellings we can come up against far more spectacular 'problems'. The best of these must surely be the incidence of householders being awoken quite startingly by the sound of a flight of native ducks rap dancing on the roof. It is relatively rare, but true, that a brand new galvanised iron roof on a moonlight night looks (to a duck) remarkably like a perfectly wonderful pond on which to land with the result that a dozen pair of webbed feet under full power and flaps down can gidder-gidder-gidder-gidder-gidder across the crowning glory of a domestic enterprise.

With the first dozen or so of fairly sincere male magpies already launching their campaign against urbanites and reminding us that we can look forward yet again to a bumper season, I personally find nothing whatever amusing in this folk versus fauna thing at all! I believe that it is the obligation of all of us to use every opportunity to expand the awareness in all we come into contact with-that magpie territoriality is perfectly normal and indeed we should be proud that our suburbs are reasonably well endowed with native animals.

At the Moggill centre we can receive up to forty or fifty complaints/enquiries per day. Some of these 'problems' have prepared solutions which by and large fully satisfy the caller. Others are a bit like AIDS - no cure yet - but we're working on it.

Most of the 'problems' (but not all) are based on the callers lack of appreciation of his/her natural heritage. A calm, sympathetic, one to one approach works best for all but the most determined whingers.

by Ric Natrass



## From Gil Field in the Golden West

### Way out west

Hi, Southern Regionees, (or is it Regionaires?) thrilled to receive 'Brushtail 4' (thanks Dot) - when you are away from the Moggill heartlands its certainly the way to keep informed - I feel like a park ranger again getting the dirt on who's who and reading between the lines conjuring up images of infamous characters. Loved the 'bandicoots' Ric - keep up that urban wildlife management education programme. What came out of your possum boxes experiment as the alternative to relocating them? Are koalas really the only thing happening in R & P? Or is it just that those guys and gals couldn't put pens to paper even to save their own jobs (!!).

Well I would like to be able to write to all or you personally that are bothering to read this epistle, but its not practical given the great number of staff I consider good friends at Moggill coupled with my procrastinating spirit. So this will have to suffice, at least it will give some personal perceptions to 'Brushtail'. I had hoped 'Brushtail' would become a forum for ideas and opinions rather than just humour and reports, so I will now contribute to that vein.



Apart from (1) real football (Aussie Rules of course! (I was raised in Melbourne)) - the joy of seeing those 4 posts at either end of the ground as I drove out of Kalgoorlie on my way across Australia on the last day out of Perth - and (2) wet winters (sorry didn't mean to rub it in ) the other great moment of oneness [when ones mental set (the sum total of past life experiences that condition your perception of the world) and setting (the environment around you) mesh in a exstatic blend of 'here and now' and 'been there done that'] for me has been jarrah firewood. You buy a trailer load for \$30 of split rounds. A good axe, a chopping block and that sound when hard hardwood splits immaculately over and over right down to pencil size kindling. Fantastic! And then it burns long with good coals but right down to ash. Jarrah - deep red and hard. A stringy bark that is the most common tree along the Darling Scarp that separates the Swan Coastal Plain and Perth from the extensive Western Australian plateau - the precambrian shield that is the true antiquity, the essence of Gondwanaland. Then there's the beaches - long stretches of sand with limestone back drop and vegetated dunes in which to shelter from the sun and wind. A short walk and you will loose sight of all other people - and there's thousands of kilometres of coast! - true wilderness experience.

I love a winter beach of crashing waves and white tops rolling back before thundering down then up the sand snatching at your ankles. On the south coast at Cape Le Grand National Park Lucky Bay is even more exhilarating than Wilsons Prom in Victoria. They reckon whales come into the Bay to frolic and can be seen from the extensive heathlands overlooking the Bay. The heathlands are so extensive that the Noosa Plain seems lame in one's memory. What must it be like when it flowers in spring?!!

Roadworks - here its all limestone fill and laterite - crushed to red pebbles that makes for great roads across the heathlands and through the forests. Here a laterite road is the salt of the earth, the local product, its just so fitting.



And sand - common, clean, copious sand - that's why they call them sandgropers (its got nothing to do with adolescent beach behaviour after all!) If you want a sandpit for your kid you just stop watering the lawn for a couple of weeks in summer and there it is - groping at your doorstep.

I must say something about numbats. I recently saw them in a 'natural' setting at Perth Zoo. They are truly fantastic. An Australian diurnal mammal, frisky like nothing I've seen, darting about, standing up on its hind legs, inquisitively exploring a fragment of termite mound held between its fore-paws. They are really small - (young kitten size) and totally endearing both visually and behaviourally. If Numbats were not now so restricted in range I'm sure they would be Australia's most popular furry friend.

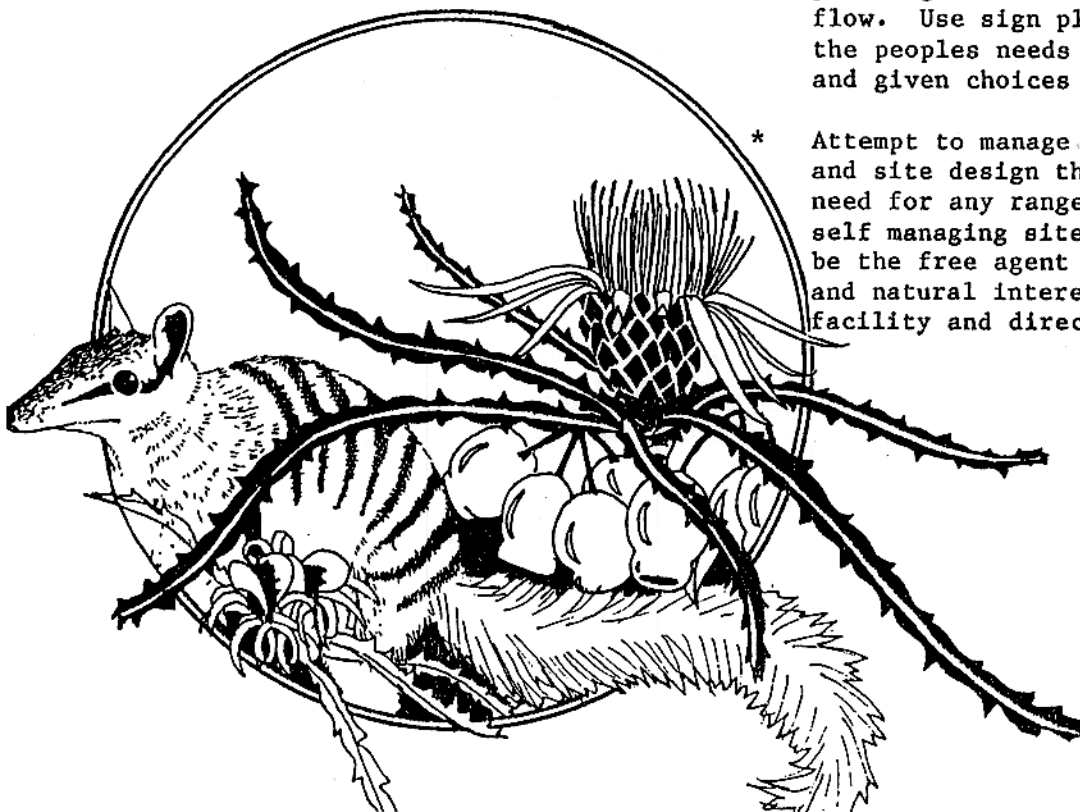
A word on gumnuts - they are huge here. The only thing I've seen like them in the (WA jargon, sorry!) is *E. planchoniana* on the sand islands. Get a load of the Marri (*E.*  ) or *E. megacarpa* and that's just a couple I've messed with. They locally call the marri 'honkey nuts' - apt. And I didn't even mention banksias. See you in the west.

Regards  
Gil Field

**Interstate Interpretative ideas** (by Gil Field)  
Some thoughts on interpretation planning and practice.

#### **Signs and Sites.**

- \* A good park entrance sign with pictograms of the regulations and facilities should along with a good site development design be the only signage required before you encounter the interpretation display sign/shelter/visitor centre.
- \* If you think you need more signs then consider changing your site plan first.
- \* All the messages should be conveyed through your interpretation display sign not polluted about on excessive plank signs.
- \* For every negative in pictogram/symbol signs give at least one positive.
- \* Put yourself in the position of the park visitor first and the park manager second when planning a sign programme. Be your audience, consider their inputs of information, what they are receiving from the signs and site.
- \* Consider that you probably can't change their attitudes or actions by words on signs but you can control their actions by efficient site planning that directs the people flow. Use sign placements to meet the peoples needs to be directed and given choices of direction.
- \* Attempt to manage a site with signs and site design that replace the need for any ranger presence. Plan self managing sites. Then you can be the free agent to answer social and natural interest enquiries - not facility and directional enquiries.





#### 4.8.2 Conventional shelter

This shelter incorporates a 'hip' roof with square cut jarrah posts and supporting woodwork. These shelters use the same standard format display boards as the Colonial Shelter, which are interchangeable with other shelter designs. Corrugated iron roofing painted bronze olive is preferred but wood shingles can also be used if the roof structure is strengthened.

#### 4.8.3 Pyramid shelter

This design has an enclosed central area with three panel faces fixed in the shape of a triangle. Roof beams coming from each of the three triangular edges meet at an apex to form a pyramid-shaped roof. Shingles or corrugated iron roofing can be used together with three supporting bush poles to give a rustic, bulky appearance. Such shelters are well suited to the southern forests, where the use of round timber poles reflects the dominance of large karri and tingle trees. These shelters are constructed on site and they are not as efficient in their use of display area. This disadvantage is somewhat offset by their unique and attractive 'bush' appearance.

#### 4.8.4 Siting

Shelters must not be allowed to dominate the focal areas of the site. They should be conspicuous, yet blend with the surrounding setting.

Choosing a level, well-drained site free from visual obstructions, overhanging branches of the site may be 'hardened' to reduce erosion by importing soil, backfilling with woodchips, paving with wood blocks, etc.

Always provide a 3.5m cleared walking space around the base of the shelter - give visitors plenty of room to circulate.

Note that the same display board frame is common to all shelter designs. This standard frame allows for the interchange of display boards throughout the State. It is available under Head Office contract and should be ordered via the regional sign workshop.



#### New symbol signs for Western Australian nature reserves

The 'positive' symbol sign range, which incorporates the words 'observe' and 'conserve' as illustrated in the attachment, was developed in consultation with a number of staff. While these symbols are primarily intended for use on Nature Reserve identification signs, they have a wide variety of applications, particularly in situations where the intent is to create positive images/messages about the value of WA'S system of Reserves, National Parks and State forest areas.



All symbols to include the words "Observe" and "Conserve"



## INFORMATION/INTERPRETATION DISPLAY SHELTERS

### General guidelines

- \* The range of display panel choices of topics is from the broad regional view through park orientation to site specific interpretation stories or themes.
- \* Interpretation display shelters must be considered in the context of other interpretation techniques so that they are complimentary but not repetitive of the content of other techniques.
- \* Interpretation display shelters have a distinctive form and function as an interpretation technique that both defines and limits their role as a communication medium.
- \* Established standard designs (colonial/conventional/pyramid) are documented in the Sign Manual. Display panels can be 2's, 4's, or 6's at a standard size of 1200mm x 800mm from ground level.
- \* The co-relationship between type size and reading distance are significant limitations on human perception of display panels text. Subsequently set type sizes have been established for headings, sub-headings and text. These are headings .38pt Helvetica, type .36pt. All text is in 2 columns so number of words/line is that which research has shown is most easy to read.
- \* It is preferable to use graphics instead of words if they can adequately communicate your message eg symbol signs on map for the location of facilities. Besides space saving, graphics provide aesthetic appeal and visual relief from the block of text.
- \* Besides physical constraints on human perception of display panel content (text type size, length of sentence) - there are limits to human receptivity brought about by reading text standing up at a static display.

Suggested rule of thumb is no more than one minute reading time/panel - approximately 250 words/panel. This length of text in 36 point helvetica would use approximately 1/3 of a display panel leaving 1/3 for graphics, 1/3 for space less text equals more space for graphics. Suggested length of text is 100 words/panel.

- \* If these guidelines are too stringent on the stories and messages you wish to communicate - then you should discuss the matter with your interpretation officer and consider other interpretation techniques through which to communicate (see publications and productions planner).

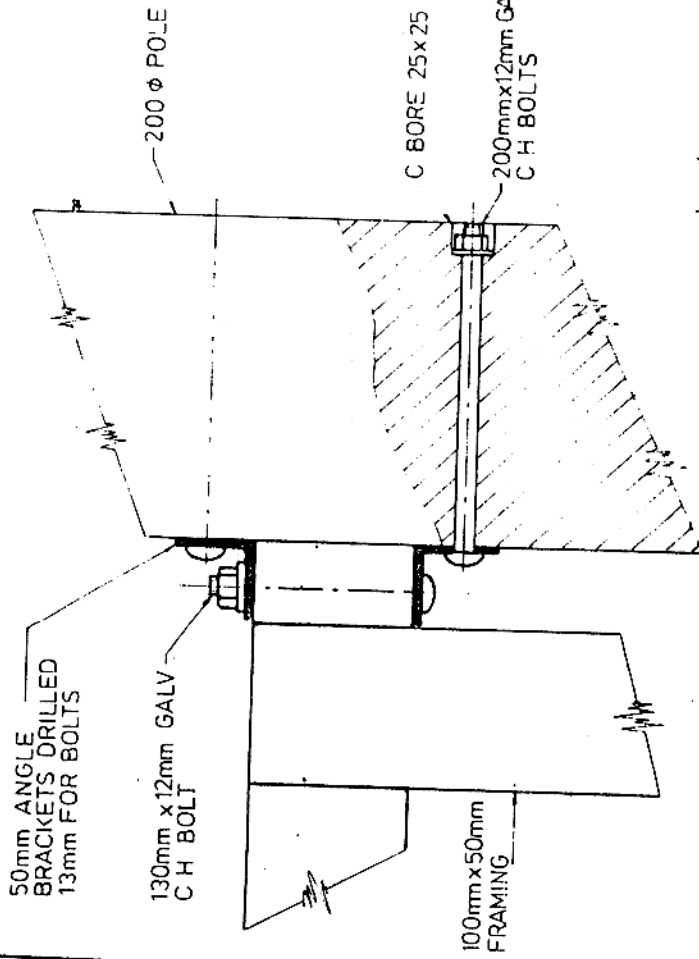
### 4.8 Information shelters

Information shelters are designed to provide more information to the user than can be achieved by using any of the previous sign formats. They are used to house and display interpretative material which would otherwise suffer from exposure to the weather. Shelters should always be double sided for construction and display area efficiency.

#### 4.8.1 Colonial Shelter

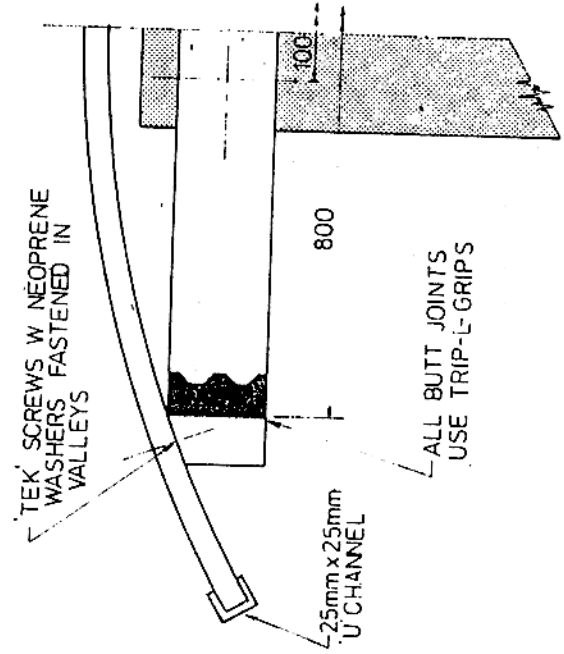
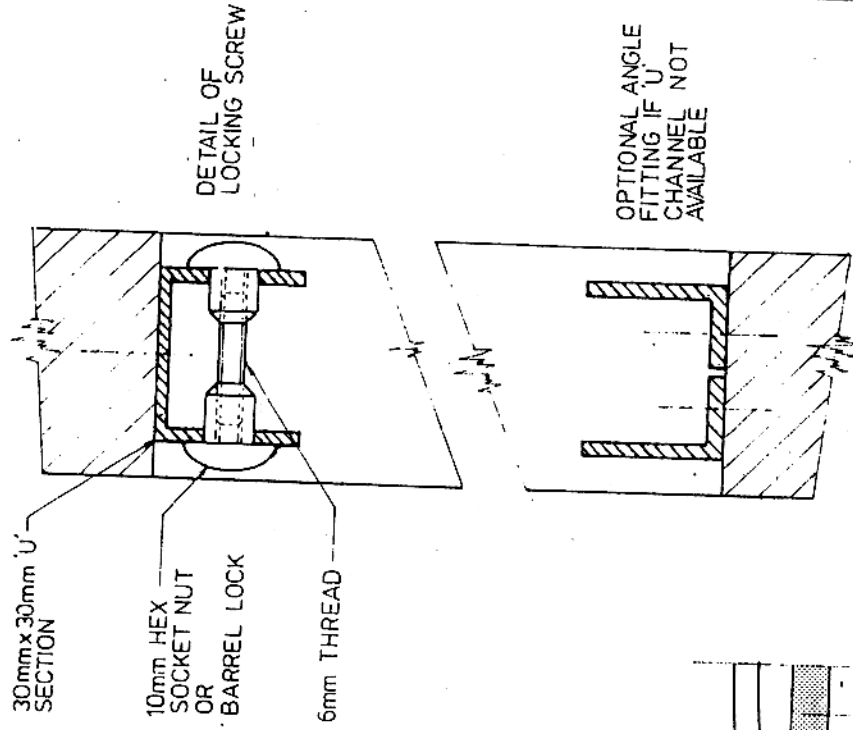
Because of their modular design, these shelters can be combined to form multiple display units in various configurations. Their prefabricated design allows them to be mass produced in the workshop and quickly assembled on site. The display boards are similarly designed, which allows for ease and efficiency when changing the display or carrying out repairs. Basic shelter components comprise two Tanalith treated, 150mm diameter pine posts, curved corrugated iron roofing painted bronze olive on both surfaces, and double sided, removable information panels with protective perspex sheeting.



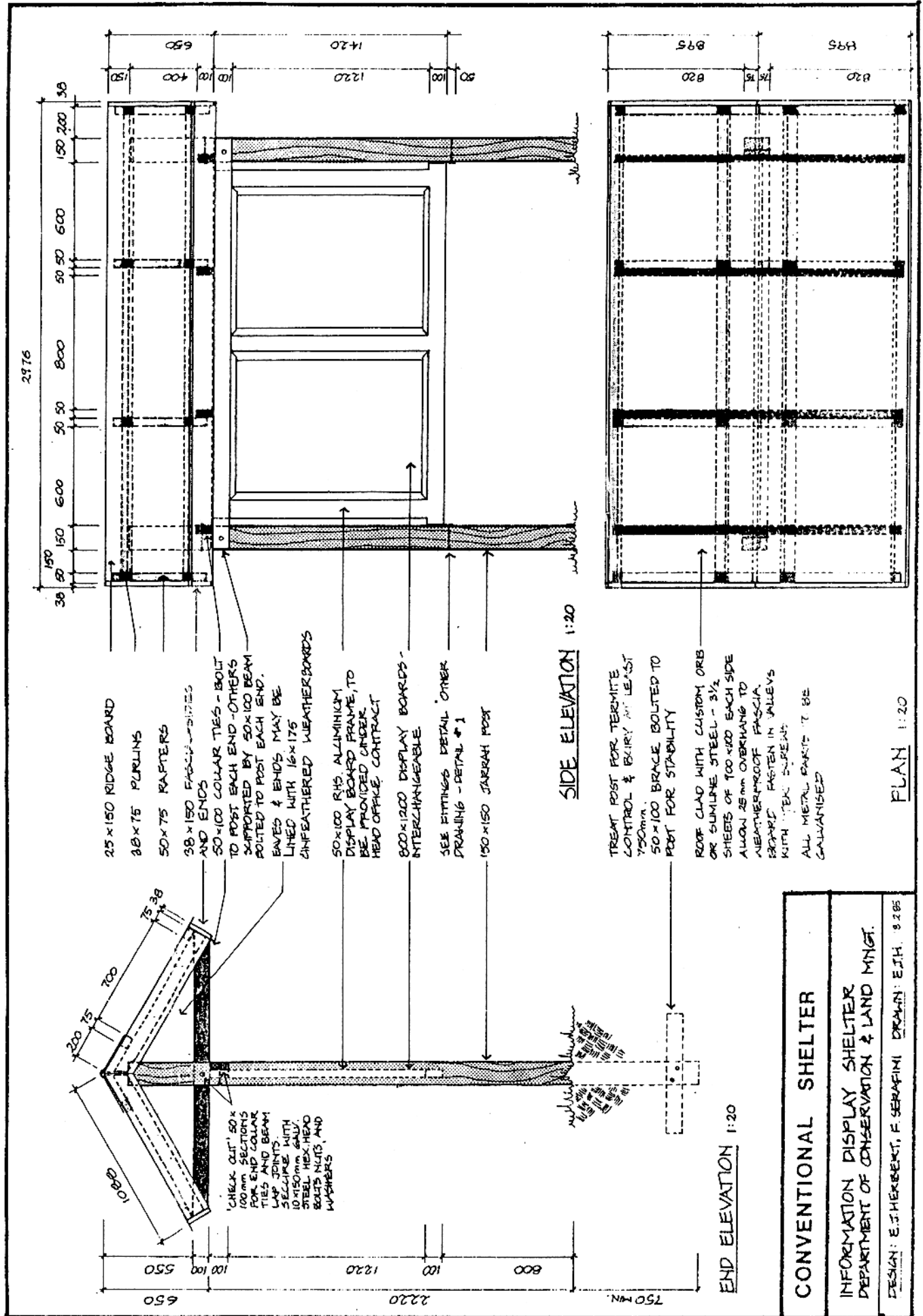


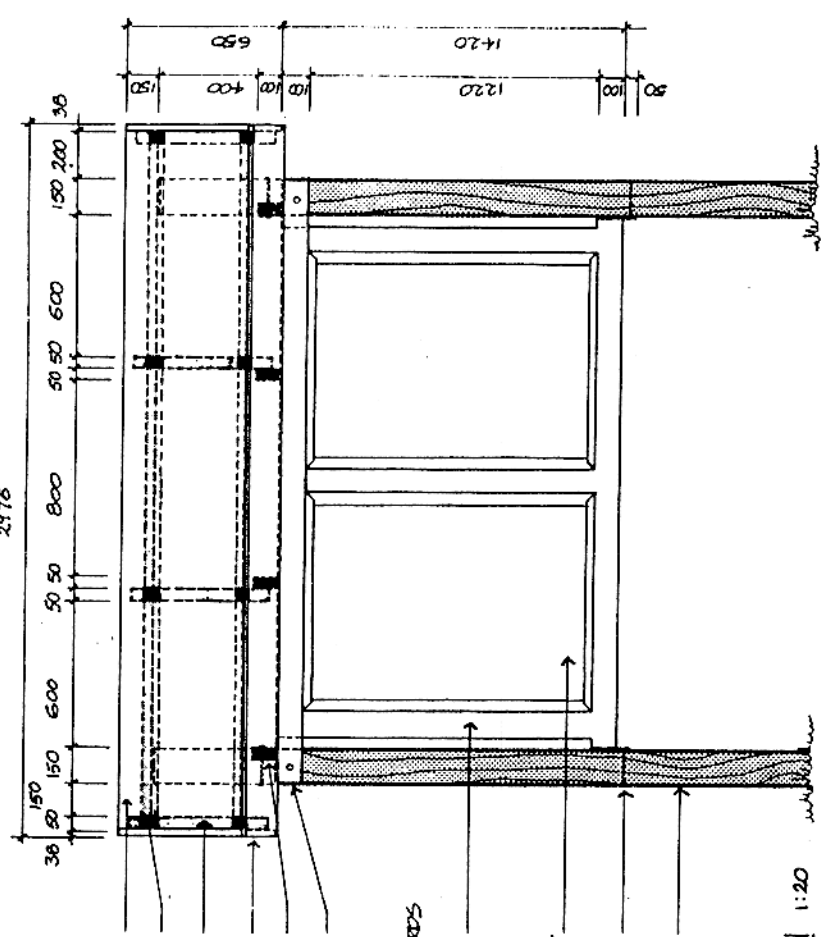
1- DETAIL OF FRAME TO POLE FASTENINGS

ALL U SECTIONS ALUMINIUM  
ALL OTHER METAL PARTS GALVANISED



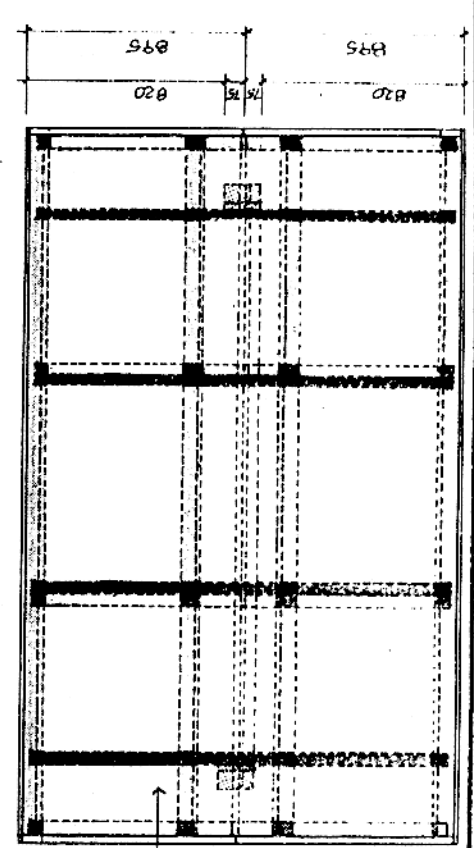






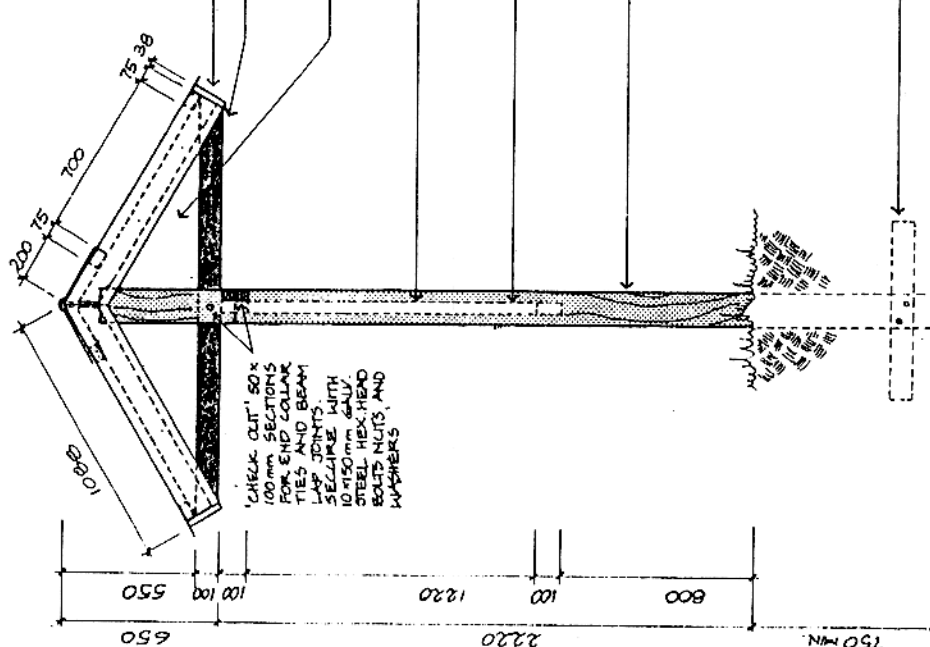
- 25 x 150 RIDGE BOARD
- 38 x 75 PURLINS
- 50 x 75 RAFTERS
- 38 x 150 FASCIA SIDES AND ENDS
- 50 x 100 COLLAR TIES - BOLT TO POST EACH END - OTHERS SUPPORTED BY 50 x 100 BEAM BOLTED TO POST EACH END. EAVES & ENDS MAY BE LINED WITH 16 x 175 UNFEATHERED WEATHERBOARDS
- 50 x 100 RHS ALUMINIUM DISPLAY BOARD FRAME, TO BE PROVIDED UNDER HEAD OFFICE CONTRACT
- 800 x 1200 DISPLAY BOARDS - INTERCHANGEABLE
- SEE FITTINGS DETAIL OTHER DRAWING - DETAIL # 1
- 150 x 150 JARURAH POST

SIDE ELEVATION 1:20



- TREAT POST FOR TERMITE CONTROL & BURY AT LEAST 750mm.
- 50 x 100 BRACE BOLTED TO POST FOR STABILITY
- ROOF CLAD WITH CUSTOM ORB OR GALVNEE STEEL - 3 1/2 SHEETS OF 100 x 400 EACH SIDE ALLOW 25mm OVERHANG TO WEATHERPROOF FASCIA BOARD FASTEN IN VALLEYS WITH TEK SCREWS
- ALL METAL PARTS TO BE GALVANISED

PLAN 1:20



END ELEVATION 1:20

CONVENTIONAL SHELTER
INFORMATION DISPLAY SHELTER
DEPARTMENT OF CONSERVATION & LAND MNGT.
DESIGN: E.J. HENKERT, F. SERAFINI DRAWN: E.J.H. 8/2/85

### What's the rush mister?

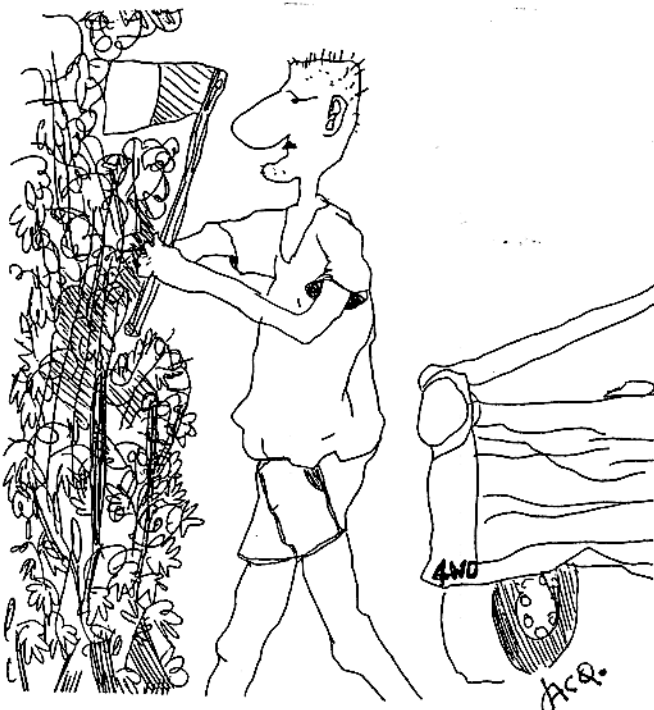
Some of us, who were in the Service in those antediluvian days before regionalization and programme management, remember a time when (Sorry R & P persons, this is another boring old management discussion) life was a bit slower.

Yep folks, back in those days (or was that daze), this fine organization certainly wasn't achieving much and wasn't achieving it slowly. Now calm down, calm down. That's a broad sweep, an overgeneralization, a gross oversimplification, but somethings were not being done right were they?

Charmingly rustic management and delightfully delapidated facilities inherited from Forestry didn't fit with the expanding roles of the Service and were no match for the pressures building within, and without, the Service.

We weren't dealing effectively with concessionaires, management planning, interpretation, local governments, pressure groups, fire management and the growing demand for nature based recreation, to name but a few issues.

Well, finally the big shake up came and blood ran out the scuppers. First restructure the fabric of the Service, then temper it with a dousing of regionalization to form a tool hard enough to break the hardest sod (and let me tell you, there's a few hard sods out there wot needs bustin').



Post restructuring/regionalization, planning was the key. Development plans, site plans, management plans, sign plans, interpretive plans, staff plans, 5 year plans, plans, plans, plans.

Now here we are in August 1986. In the last 10 years, the National Parks in Southern Queensland have seen massive increases in visitation as people:

- a. became more aware of national parks (and recent surveys have shown that people younger than 30 are dramatically more aware of nature conservation and national parks than those older than 30. Good heavens! Does this imply that interpretation works?)
- b. reacted more and more to the pressures of urban life by seeking to recreate in an environment which is, in varying degrees, obviously non-urban.
- c. reacted more and more to the pressures of urban life by seeking nature based recreation - to put themselves in an environment where they could individually and personally interact with nature (and no, (b) and (c) are not necessarily the same thing) and not unnecessarily exclude or control it.
- d. responded to a combination of each of the above and some other factors not herein elucidated.

Heads went down, tails went up. The weather bureau recorded an increase in relative humidity as sweat steamed from the toilers brows. Funds and staff were coerced (alright, bludgeoned) from Treasury as more effective data bases were established.

Walking tracks, toilets, barracks, workshops, roads (internal and external), picnic areas, camp grounds, jetties, and visitor information centres have been refurbished, remodeled, removed, restored, rebuilt, redesigned and constructed. A veritable infestation of infrastructure has resulted. Other programmes and sub-programmes have similarly expanded.



To confuse analogies even further (and why not, Guv? Why not?) - if staff are the pistons of the motor which powers the vehicle which gets all of this done, then the tacho is in the red.

Wot?

OK, I'll get to the point.

Several things are of concern:

- . A significant proportion of all the potential sites for sensible development within national parks in the south-east corner of the state have been developed already. By maximising development now, the option to manage a particular site with a lower level of development, or with no development at all, is, for all practical purposes, lost.
- . By emphasising infrastructure development we may be creating an unreasonable expectation that we will continue to do so in people who do not understand that such development is merely a means to an end - 'permanent preservation to the greatest possible extent...' and not the objective in itself.
- . Who is going to maintain all this stuff?
- . What criteria, if any, are used to establish a sites' carrying capacity?
- . Many of these developments have moved the recreational opportunities we offer at many sites away from the solitude/close contact with nature/no infrastructure/contemplative/limited dependence on technology end of the spectrum towards the crowd/intra group socializing/infrastructure and technology dependent end.

In 10 years time, will people from south-east Queensland have to go to Antarctica to find solitude? I hope not.

Those of us with management responsibilities should look critically at what we're doing.

Does this development have to happen right now?

Does it solve a problem or create a new demand?

Will it change the experience attainable at a site and will it consequently change

the clientele?

Where will those people go for an equivalent experience?

What is the psychological carrying capacity of the site?

What is the physical carrying capacity of the site (NB this is determined by the LEAST robust attribute)?

Will it reduce the quality of recreational experience currently attainable?

Is there any other strategy which might positively influence an apparently adverse political situation?

What has it got to do with nature conservation?

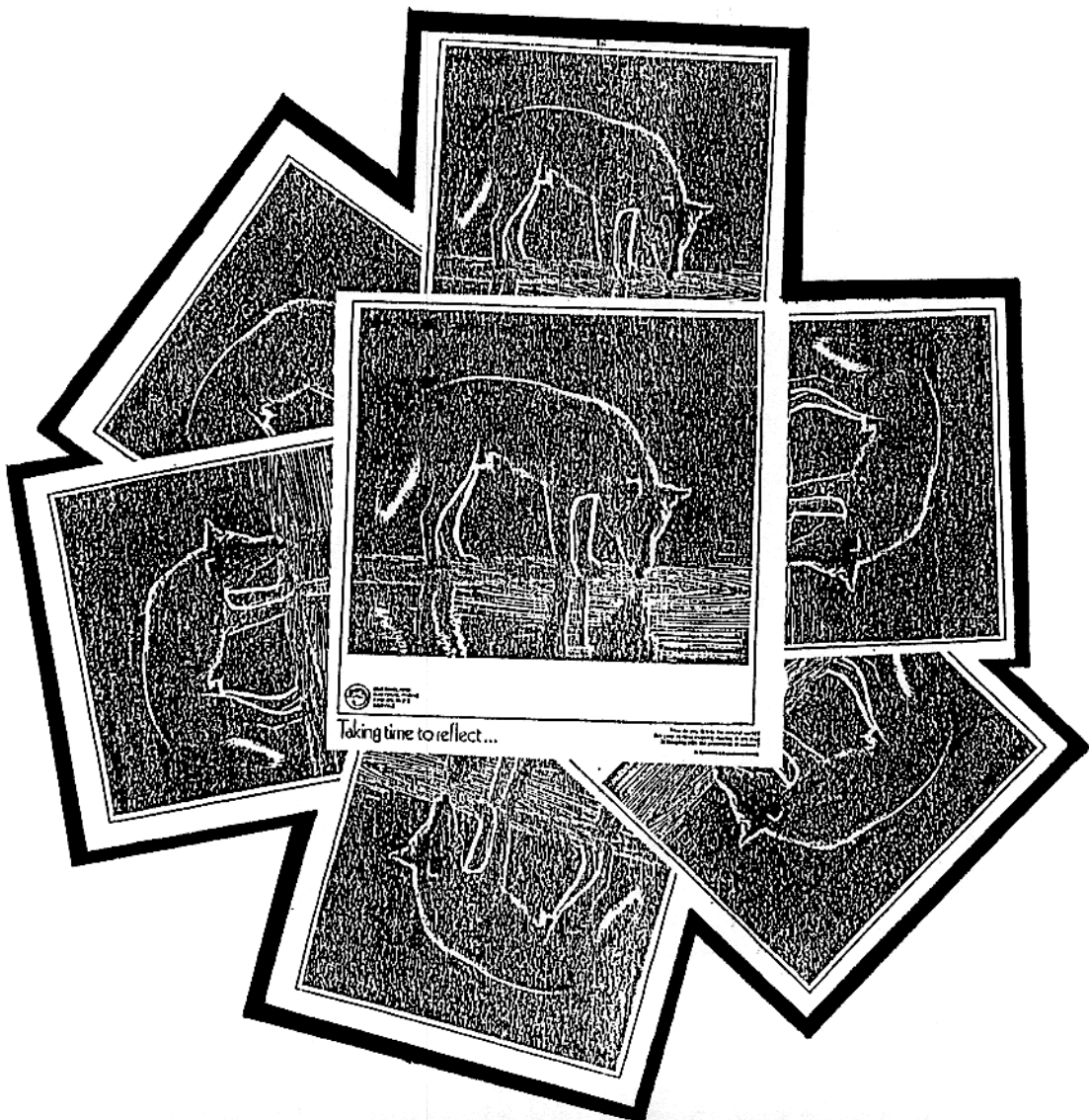
What will be the effect on the probability of survival of the plants and animals in the park?

Think about it, good people. Look at your park or management area. Just how significant an impact has the last 10 years had, and, should those rates of degradation continue, how long will it be before it loses its conservation and recreation values?

Dave Batt

# Remember 1985 - 1986?

Take time to reflect...



## **RESEARCH AND PLANNING**

### **Dasyuroides byrnei (Kowari) survey**

A survey was organised for Dasyuroides byrnei, a rare marsupial of South-Western Queensland. The project was carried out by a zoologist, Mr Leong Lim from NSW National Parks and Wildlife Service on staff interchange to Queensland. A number of new localities of kowaris were located and knowledge of the species status and habitat needs was increased. This knowledge will enable the Service to assess needs for conservation measures for the species in South-East Queensland.

### **Ground Parrot Study**

A ground parrot project funded by the Australian National Parks and Wildlife Service commenced in January. Work is being carried out by a consultant zoologist, Dr D. McFarland. The major topic of investigation is the effect of different fire regimes on the status of the ground parrot. The majority of ground parrot habitat in Queensland is not included in National Parks, State Forest and Army Reserves. The knowledge gained from this project will enable the needs of the ground parrot to be taken into consideration when managing these lands.

### **American Express Koala Survey**

The Q.NPWS is responsible for the Queensland section of the National Koala Survey, funded by the American Express Corporation. This project commenced in April and will provide information on the distribution of koalas in Queensland.

### **Lamington National Park Fauna and Flora**

A project was carried out to map the vegetation and establish a fauna data base for use in the management of Lamington National Park. This project will help to identify sensitive sites that should be protected from development and will highlight faunal and floral information for use in interpretation.

by G. Gordon

### **Coolooloolo Vegetation Maps**

The first of three vegetation maps (1:25,000) will be published shortly and the field work for the other two maps to complete coverage of the Coolooloolo area, will be finished shortly. The last two maps have been worked on with the aid of assistance from CEP.

### **Plant Lists**

A plant species list for Fraser Island was compiled from published and unpublished sources and formulated in a manner for ease of use by the public. Preparation of species list for Mon Repos EP is almost complete after revising a list prepared by local staff.

### **Conservation Review**

Vegetation maps at 1:50 000 were prepared for Coolooloolo NP and Magnetic Island NP in a format compatible with Peter Stanton's vegetation classifications as contained in the Rakes Report.

### **Coolooloolo Fire Management Research**

During the year five years of air photography of prescribed burns and wildfires at Coolooloolo were used to compile maps of all fires as part of a research project. Fuel sampling continued on permanent sites in the western catchment of Coolooloolo, and preliminary analysis of data indicated a need to continue the work until final accumulation rates level out. A small project commenced to monitor fire response of Boroniakeysii - a rare endemic plant of Coolooloolo. Advice on fire management of the area continued.

### **Magnetic Island Vegetation and Fire Management Research**

A report on the description of the vegetation and natural resources of Magnetic Island was completed during the year and a vegetation map is being prepared. This report is to be published in the new Service Technical Report Series. A report on research and fire management on the island is nearing completion.

### **Fire Management Advice**

Visits to Moreton Island and to a national park on the NSW/Qld border near Mt Lindsay were made during the year to give advice on specific fire management problems. Forestry Department also requested fire management advice on two areas close to Coolooloolo - a Banksia spinulosa area north of Coolooloolo and the Scientific area in Southern Coolooloolo where Boronia keysii is conserved.

### **Workshop**

Participation at a vegetation Mapping Workshop run by the ABRS in October 1985 provided much useful information, and interaction with other active

## WILDLIFE

### **WILDLIFE - DOWNS**

Annual report of Wildlife activities in the Toowoomba Wildlife Management District of the Downs and South-West Sub-Region.

#### **2S1**

A total of 23 days were spent by D.W.R. Turnbull at Moggill in the position of relieving Senior Wildlife Ranger while S.W.R. Connolly was on long service and recreational leave.

Wildlife Ranger Conway commenced duty at Toowoomba in July, 1985. His arrival was most welcome and eased the pressure in relation to wildlife work.

However I submit that there is sufficient wildlife work in this wildlife management district for another two officers. That is if the kangaroo industry and aviculture movement is to be policed effectively.

#### **2S4**

The task of keeping track of Petty Cash and Postage has been taken over by Mrs E. Farrington.

#### **6C1**

There are about 400 licenced aviculturists in the Toowoomba District and the number is steadily growing, thus increasing the work commitment of W.R. Conway and myself to aviculture.

The increased interest can be attributed to, in part, to the relaxation of the Regulations in relation to the numbers of species that may be dealt in by fauna dealers and the extension to the list of native birds which may be kept without a permit.

### **Problem species**

**Kangaroos:** 117 Section 25 authorities were issued for the destruction of macropods claimed to be causing damage to crops and/or pasture.

**Magpies:** 87 birds were caught and either relocated, had feathers removed from one wing or were placed in captivity until the problem period was over.

**Possum:** These are a continual problem, also the people to whom traps have been loaned. Out of 18 traps eight cannot be located. These have either not been

returned or misplaced by the person who borrowed the trap, or have been loaned out by staff who have not recorded information as to whom and where the trap has gone.

**Section 24 Authorities:** 64 authorities have been issued for a wide variety of fauna picked up in a sick or injured condition.

### **Permits issued and monies collected**

Permits to Remove	468)	
Permits to Import	58)	\$4092.40
Movement Authorities -		
Singles	173	346.00
Books of ten	50	1000.00
Books of fifty	3	300.00

#### **OSFP - Personal use -**

kangaroos	43	559.00
tags	925	138.00
duck	56	728.00

#### **B Class Fauna Dealer's**

Licence	6	424.00
---------	---	--------

#### **F Class Fauna Dealer's**

Licence	1	115.00
---------	---	--------

#### **E Class Fauna Dealer's**

Licence	129	1935.00
---------	-----	---------

Royalty - birds		418.00
-----------------	--	--------

- deer		1020.00
--------	--	---------

#### **Permit to Keep Fauna -**

Private	216	<u>2802.00</u>
---------	-----	----------------

**TOTAL** \$13877.40

### **6C2 Law enforcement**

Nineteen offences reported, resulting in:

Three prosecutions with a total in fines

-	\$ 550.00
---	-----------

Double Royalty	-	<u>4310.00</u>
----------------	---	----------------

**TOTAL** \$4860.00

Three prosecutions pending

Thirteen warning letters sent

Number of fauna involved -

birds	135
-------	-----

kangaroo skins	273
----------------	-----

Appliances - traps	2
--------------------	---

A number of patrols were carried out in the Stanthorpe - Sundown area in conjunction with the Police Fauna Protection Squad in relation to illegal shooting.

There were no apprehensions, however I believe the message has got across.

vegetation mappers around Australia.

by C. Sandercoe

Work has started on arrangements for a Regular Taxon Review which was recommended by the Internal Operational Audit. The idea being to monitor the fauna in the State at appropriate intervals to check on the status of the various species and species groups so that it will be possible to anticipate changes better and initiate suitable measures to counter any adverse changes.

The first task in hand is to update the list of fauna recorded from the state in **Queensland Fauna - A Provisional List**, which was originally compiled in 1981 and incorporate any name changes and additional species which haven't been found or described since. It looks as though there will possibly be about an additional 50 species of reptiles and 20 species of frog as a result of fauna surveys and taxonomic studies.

The data from earlier fauna surveys is being consolidated and collated to provide a basis on which to build a picture of the states fauna. The section on published surveys has been completed and it now intends to include republished surveys and other data prior to an analysis of the situation both as regards fauna status and and gaps in our knowledge which require filling. When this is completed it will be possible to plan monitoring and presentation of results.

It is proposed that the new lists of fauna will indicate something of the conservation status of the species ie species endemic to Queensland and level of protection afforded by the provisions of the Fauna Conservation Act 1974-1985 and its Regulations. Lists of fauna are being stored on disk and manipulated by computer so that in addition to a fauna list it will be possible to produce unnotated lists, local fauna lists and forms to carry out the taxon review. In this form data is more readily available and can be more easily amended and the publication of up to date information facilitated.

In the past year work has continued on the study of the taxonomy of bats we have been working on with further specimens being brought in from fauna surveys and incidental collecting.

Workers at the Western Australian Museum have published in Australia - with surveys of the broad-nosed bats. These were formerly called Nycticeius 1 and they have now been split into two genera Sioteanax 2 and Scolonyssens 3 and considered as endemic Australian genera. Our findings are in line with this work and fill in gaps in their coverage of south-eastern Queensland and need publishing. With other groups additional specimens have demonstrated the complexity of their taxonomy which requires continued study. Access to a camera lucida 4 should allow the preparation of illustrations for future publications.

- |   |               |
|---|---------------|
| 1 | Nycticeius    |
| 2 | Scoteanax     |
| 3 | Scotorepens   |
| 4 | Camera Lucida |

by D. Allison

### 371 Natural Resource Assessment

A review of the numerous existing proposals for reservation has been made and priorities for action have been set.

The biological values of the vacant crown land in the Maryborough and Lake Weyba areas have been reassessed and areas of interest for reservation have been resubmitted to Lands Department for their consideration.

Numerous submissions continue to be made by regional staff relating to available and interesting lands that are mainly small in area, freehold and expensive to acquire but which serve to consolidate or rationalize existing reserved lands.

### Service Estate gazettal 1985-86

Two new environmental parks (63.7 & 114ha)

One new D & O reserve (1500ha) and one addition (0.353ha)

One new scientific purpose reserve (165.97ha)

Two additions to national parks (128 & 6040ha)

One degazettal of Como Fauna Reserve (4322ha) for incorporation within Coolool National Park.

by G. Wilkinson

#### 6C4

General liaison has been continued with officers of other Government Departments, particularly the Police and Stock Inspectors of DPI.

A series of extension/training courses were conducted at Toowoomba, Roma, Charleville, Gympie, Moggill and Mineral House. These were well received and I have received a request from the Toowoomba Police to conduct further courses for the benefit of the officers in the Toowoomba Police District.

There has been a lot of interest shown by Pre-School groups in bringing children to the office complex for talks on wildlife.

#### 6M1

A security fence has been constructed around the fauna holding facilities. This has also created an area where a small number of macropods can be held and a pen has been constructed for holding possums.

It is planned to paint the inside of the reptile room and preparation room as routine maintenance.

#### 6N1

Numerous enquiries have been received re: gazetal of private land as Fauna and Flora Sanctuaries. In most instances it has been endeavoured to persuade the persons concerned to consider gazetal as a Refuge as an alternative.

#### 6N2 Kangaroos

Kangaroo and wallaby numbers are high throughout the district, however the kangaroo harvesting industry is in the doldrums at present, mainly due to an economic slump.

#### Deer

Seventeen permits to take red deer and 10 permits for fallow deer have been issued to date.

There appears to be an increased interest in both shooting and trapping deer for farming purposes.

#### Koalas

About 10 koalas have been brought in to the office or collected all of which died despite veterinary treatment.

It would appear that once a koala is in such condition that it will allow humans to pick it up and handle it with

ease there is little that can be done for it.

One koala was removed from the top of a partly completed house.

A meeting of the Darling Downs Koala Society was attended by SWR Connolly, Mr Ross Patterson, Queensland co-ordinator of the National Koala Society, and DWR Turnbull.

It was suggested to the Society that the best way in which they can assist is with recording koala density and distribution and locating potential koala habitat.

#### 6N6 Zoos

There are two registered zoos in the Toowoomba District: Ahern's at Roma and Beardmore's at St George.

by R. Turnbull

#### WILDLIFE - WIDE BAY/BURNETT

Wildlife and rural nature conservation within the sub-region is receiving a much greater profile.

This has been achieved by involving all staff in its day to day management. The benefits of this initiative are numerous for our wildlife staff and the general public.

#### Administration

Permits to keep and/or E Class Licences	284
Fauna Dealers Permits	4
Crop Damage Permits	18
Open Season Wild Duck Permits	69
Culling Red Deer Approvals	25
Open Season Personal Use	8

Permits to Remove and/or Movement Authorities	957
Permits to Import	30

#### Regulatory

Investigations into illegal taking, keeping or movement of birds were carried out in eight cases. Verbal warnings and/or warning letters were issued.

#### Aviculture

Inspections of 50 aviculturists were conducted throughout the year and eight night aviculture meetings were attended in Gympie, Maryborough, Bundaberg and Mundubbera.

## **Zoos**

Inspections of the Bundaberg Zoo, Dreamtime Reptile Park, Avacardo Grove, Tropical Bird and Animal Park were conducted on a regular basis. A report on the upgrading of the Bundaberg Zoo was submitted.

## **Buffalo**

The removal of escaped buffalo from Noosa North Shore adjacent to Cooloola National Park was conducted and a report was submitted.

## **Koala**

Investigation of Koala Park proposal on shores of Lake Bejelke Petersen with Murgon Shire Council and Stewart James was conducted and a report was submitted with recommendations. This project is ongoing for the next two years.

An investigation on a proposal to have koalas at Harvey Bay Botanical Gardens was carried out with Kevin Bade of Q.NPWS and Glen Kruger of Harvey Bay City Council.

## **Wild dogs**

A management report was submitted regarding wild dogs on Cooloola National Park.

## **Extension**

An information leaflet was prepared for the management of wildlife on crops.

Several scout and youth group meetings were attended giving talks on endangered wildlife.

by P. Sheehy

## **WILDLIFE - MORETON**

### **Aviculture**

#### **Licencing**

Normal operational duties associated with aviculture remain split between head office clerical staff and wildlife/rural nature conservation staff at the Southern Regional Centre. Maryanne Ambrose and Glenys Lindsay in head office are still responsible for receiving, processing and recording the bulk of licences and permits associated with aviculture as well as answering general enquiries on these matters. I have been responsible for checking and signing the licences. Applications which have major discrepancies are detailed to Moggill for investigation. This work requires at least one full day a week which was

difficult to fit into normal operations and often caused delays when I was unable to attend to it promptly due to other priorities. This problem has been resolved by having the necessary authority delegated to the experienced staff processing the licences. Major licence problems are held for me to view and the appropriate action is taken. This will only require my attention for approximately one day each fortnight.

At present approximately 1600 licenced aviculturalists exist in the Brisbane wildlife district with an additional 200 presently pending.

Numerous problems exist in the area of aviculture which include the major ones of:

- 1 the continual failure of people to obtain the necessary movement permits and hence legally acquire fauna,
- 2 failure to provide adequate detail on the origin of fauna,
- 3 people failing to obtain aviculture licences,
- 4 lack of expertise in keeping the fauna.

Problems 1, 2 and 3 are a result of our failure to devote sufficient time to inspecting aviculturalists and follow up with enforcement action when necessary. Our general education role in this area needs considerable work. Problem 4 is a result of fauna being more readily available through pet shops. Prior to pet shops being allowed to deal in the increased list of native species potential new aviculturalists had to purchase from other aviculturalists which meant that the person had a far greater chance of at least addressing the problems of housing, diet and husbandry. In addition there was a greater chance that the fauna was aviary bred rather than trapped as is the case with certain birds imported from other states. Continual complaints are received regarding birds which have been purchased from pet shops and died.

During 1986-1987 it is hoped to conduct random aviculture inspections. I am sure that the lack of such inspections is the main reason for the continuing problems but obviously these problems will never be completely rectified. It



would however decrease the number of 'fix-up' jobs which are straining our resources.

Most aviculture inspections carried out (approximately 15) were the result of 'fix-up' or enforcement matters. During this period over 150 minor matters required an inspection but only the serious ones were attended to. Staffing levels including my lengthy stint as A/CMO-W and other priorities were the reason for lack of action in this area. As a result the people involved were given the benefit of the doubt and the licences were issued, however, approximately 50 still require action.

#### **New - Fauna Conservation Regulations 1985**

The new regulations were designed to overcome a number of difficulties with the legislation and to decrease the clerical load on wildlife staff by increasing the Regulation 16 bird list and creating movement authorities. However, the benefits obtained by these changes have been out-weighted by the greater availability of native species from dealers. The number of licences is actually increasing due to the easy access to fauna from other states which is imported by dealers. This should be a matter of some concern considering the lack of licences in other states.

The 'Keeping of Birds' handout was re-written, dealer record books issued, movement authority blanks issued and a supply of return forms as well as movement application forms have to be supplied. In addition to this at least an hour is spent explaining the procedures involved to each new licence holder. Additional clerical time is spent monitoring returns and filing all of the associated paperwork.

No random inspections have been carried out in the past year which has resulted in certain dealers doing as they please. Enforcement action has been taken whenever a serious breach has occurred. This lack of attention by us will be rectified to bring the continuing minor problems down to a manageable level.

Dealer returns, movement authorities and public complaints indicate that almost 25% of these dealers are involved in some irregularities.

#### **Kangaroo Industry Class A Dealers**

Fifteen Class A dealers have major sites in the Brisbane wildlife district. No inspections were carried out by Ranger staff during 1985-1986 and this must be rectified as a matter of urgency. The Police Fauna Protection Squad was involved in major investigations in the area and this showed the potential that exists for illegal activity.

#### **Open Season Shooters**

Very little importance has been placed on shooters in this district due to the lack of professional shooting species available and the heavily human populated area.

#### **Insect Breeders and Dealers Class D Dealers**

Two insect breeders/dealers are presently licenced, their importance on conservation grounds

#### **Permit to Take Deer - Section 25**

Seventy five permits have been issued for hunting/trophy/culling purposes. Enforcement will be directed into this area if a serious need arises and where a specific complaint can be investigated. Little result would be gained by mounting patrols.

#### **Permit for Fauna to be Made Farm Deer**

One permit has been issued. This is a new permit associated with the change-over of responsibility for deer farming to the DPI. A number of applications will be expected at the completion of the deer trapping season.

#### **Section 25 Permits**

##### **Possums**

Traps are no longer lent from Moggill due to the excessive demands and the failure of the public to return them. People with possum problems may either hire a trap, employ a person to trap the animal and repair their roof, seal the hole at night when the possums are out feeding or put up with the problem. If they hire a trap from a company they require a Section 25 permit. Certain people have been issued with permits to carry out this work. One hundred and nineteen Section 25 permits have been issued for this purpose.

### **Magpies**

Fifty-one permits have been issued to trap serious problem magpies.

### **Bandicoots**

Thirty-one permits have been issued for bandicoots. Butcher-birds, Pee-wees etc where problems have not been resolved by normal means. These permits allow the animal to be relocated to an area where they will hopefully not become a problem.

### **Crop Damage**

Forty-two crop damage permits were issued. The main species continuing to cause damage are wood duck, wallaroo, wallabies and scrub turkey.

### **Crocodiles**

#### **Tagging**

At present 50% of the crocodiles in this district have been tagged and marked in accordance with the Crocodile Management Program. The animals which remain to be done are held in a large water hole at Queensland Reptile and Fauna Park. These small crocodiles couldn't be captured and they will have to be fed into a pen in summer when they commence to feed actively again.

#### **Movement Permits**

In addition to specific licences issued a large number of movement permits have been issued for the purchase and sale of fauna involved with the operation of the licences mentioned earlier. The number issued is given in the summary at the end.

#### **Rural Nature Conservation**

No specific projects have been undertaken during this year. An inspection of Dyer's Lagoon was carried out with the consulting engineer on the planning team for this project and a letter detailing my advice was forwarded to them for consideration.

The present staff level at Moggill will prevent any work in this area until I have caught up with the backlog of work which has resulted from my relieving in CMO duties.

#### **CEP Project**

The employment period for this project is almost expired with about half of the work which I had planned to do completed. I was probably expecting too much of their limited skills but it also became evident that they required constant supervision. To have achieved

much more would have been difficult due to amount of funds absorbed by the major tasks which were undertaken.

The major tasks completed were the construction of eight large bird carrying boxes, the erection of an internal fence within the compound, the installation of a complete water supply system to all areas of the compound to service future development and the erection of new cockatoo caging at the aviary.

#### **Permits etc Issued at Moggill**

Permit to Remove Fauna	1616
Permit to Import/Send-Bring	264
Authority to Remove	112
Movement Authority Blanks	2075
Class B & C Fauna Dealers	67
Section 60's B & C class	67
Insects Class D	2
Taxidermy Class F	13
Permit to Keep-Taxidermy	9
Zoo's - Class G	5
Permit to Keep-Exhibit-Zoo's	26
Permit to Take Deer for Farming	31
Permit to Take Deer-Section 25	75
Permit for Fauna to be Made	
Farm Deer	1
Section 25 - Possums	119
Section 25-Magpies	51
Section 25-Other	31
Section 25-Crop Damage	42

#### **Receipts for Permits Issued at Moggill**

Fauna Royalty	3 260.00
Deer Royalty	16 987.00
Permit to Remove, Import and Movement Authorities	11 191.70
Permit to Exhibit-Class G Licence	1 184.00
Permit to Keep and Licence Class E	1 923.80
Fauna Dealer Class B & C	6 149.00
Fauna Dealer Class F	887.00
Total Receipts - Wildlife - Moggill	41 580.50

by J. McDonnell

### **INTERPRETATION**

#### **PUBLIC CONTACT AND COMMUNICATION - PARKS**

Visitor information sheets providing basic information about national parks were produced as part of a continuing program to assist park visitors and the tourist industry. New visitor information sheets were produced for seventeen parks in the Southern Region. (Moogerah Peaks, Mt Barney, Moreton Island Fraser Island, Kondalilla,

Mapleton, Mon Repos, Cania Gorge, Burrum River, Auburn River, Girraween, Queen Mary Falls, Main Range, Lake Broadwater, Bunya Mountains, Ravensbourne/Crowns Nest).

Publications about plant propagation, tree planting and four-wheel drive use of national parks have been produced.

A detailed brochure about Fraser Island was jointly produced by the Service and the Forestry Department for visitors to the Fraser Island Recreation Area.

Displays were produced for Fraser Island, Springbrook, the Central Scenic Rim District, the Toowoomba Show Grounds and a number of other shows and festivals in the region.

Displays are currently underway for the Girraween and Sir Thomas Hiley Visitor Centres.

Nature conservation displays emphasised the Service's role in the general community.

Self-guiding walks to provide park visitors with the opportunity to discover more about the park environment have been produced for Maiala and Cooloolo National Parks.

Park interpretive programs are continuing throughout the region. A training workshop in interpretive techniques was held for staff running these programs.

At the Southern Regional Centre a new education program to handle group requests for Ranger led activities is being implemented.

Continuing liaison with local government, other state government departments, special interest groups and the tourist industry through tourist information centres is meeting the information needs of the community and the tourist industry.

In anticipation of increasing demands from schools for guided tours on, and educational materials for St Helena Island National Park, two teachers from the Queensland Education Department were seconded to the Service to form the St Helena Island Education Unit. This unit assists Ranger staff in formulating and implementing the island's interpretive programme.

Use of the southern section of Cooloolo National Park for outdoor and environmental education and personal development programmes by agencies other than Q.NPWS has been further facilitated by the production of a 'Group leaders guide' for the area.

Production of resource files for each park in the Southern Region was achieved through a Commonwealth Employment Program. These files will meet the information needs of park staff and the public.

#### **PUBLIC CONTACT & COMMUNICATION - WILDLIFE**

Seminars were held at Toowoomba, Roma, Charleville and Gympie to inform Service Officers and ex-officio officers from other State Government Departments of their functions and responsibilities under the Fauna Conservation Act.

The Queensland Recreational Hunting and Conservation Council and the Queensland Taxidermist Association have submitted a lengthy document to the Service that proposes legislative changes to the Fauna Conservation Act with regards to recreational hunting in Queensland. During the year Service officers have liaised with these groups and discussions are continuing about the proposed changes.

Substantial changes have occurred to the Fauna Conservation Regulations relating to the Aviculture Industry. As a result Senior Service Officers have attended five Aviculture Society meetings to explain how the changes affect them. Service Officers also attended the Pet Suppliers Convention to make people aware of these changes. A three panel display about Aviculture was produced for this purpose.

Continuing liaison with groups affected by problem species has resulted in staff attendance and displays at Department of Primary Industry field days and rural events. A meeting was held with the Queensland Association of Pest Controllers regarding the issues created by problem species.

On-going liaison and public education regarding the Koala has seen Service Officers attend a variety of meetings. In the Murgon Shire plans are underway to declare a koala colony area around Lake Bjelke Petersen a Fauna Refuge.

A number of advisory leaflets for staff and the general public have been prepared. These include 'Keeping of Birds', 'Dealing in Birds', 'Class F - Fauna Dealers Licence', - 'Taxidermists', 'Deer Management Policy', 'Managing Wildlife on Crops' and 'Analysis of the 1985 Open Season on Wild Duck'.

In-Service documents for use in training Service staff, other Government Department Staff and students dealing with law enforcement under the Fauna Conservation Act and the National Parks and Wildlife Act have been produced.

by L. Naumann

#### **INTERP - DOWNS AND SOUTH-WEST**

##### **1L2**

Liaison with Cambooya Shire re town plan.

Liaison with Toowoomba Tourism and Development Board.

Liaison with Darling Downs Greening Australia Support Group.

##### **1P2**

Toowoomba Showground project including liaison with the show society, QIT students, preparation of and ministerial presentation of report.

##### **1P1**

General liaison and co-ordination with other southern region interpretive officers.

Attend regional interpreters conference.

Planning for interpretive workshops.

##### **1B2**

Radio talks, newspaper articles and media work; in particular the 4WK talk back program with other local officers.

Talks to local interest groups.

Field trip to Queen Mary Falls with national convention of JAYCEES.

Display at 1986 Apple and Grape Festival, Stanthorpe.

1986 Toowoomba Show display.

Attendance at, and provision of display at RAIPR Conference held in Toowoomba; preparation for and guiding of associated field trip, to new Toowoomba showground,

Ravensbourne and Crows Nest.

Arrange air photo training workshop Meandarra as joint DPI/Q.NPWS project.

Attendance at Mulga Lands seminar.

Attend Training Workshop - Rockhampton as regional representative.

Attend Fauna Liaison course.

##### **2F1 - Budget planning**

**2A2** - Investigation of overdue water rates - Hartmann's

**2T1** - Involvement in IOAS review of fauna protection.

##### **4C3**

Preparation and printing of VIS's - Girraween, Queen Mary Falls, Main Range, Sundown, Ravensbourne/Crows Nest, L. Broadwater and Bunya Mountains, NHA liaison,

Girraween Display work,

Liaison re Junior Ranger programs in sub-region,

Queensland Recreation Week activities at Girraween and Main Range,

Management Planning - Main Range,

CEP projects - natural history of NP's in sub-region,

Holiday interpretive program discussions - all parks,

##### **6P2**

Informal planning within Regional Needs Assessment,

Preparation of state RNC strategy for submission to EMG.

##### **6C3**

Preparation of Darling Downs wildlife information sheets,

Preparation of regional display based on Toowoomba showground project for use at RNC display venues, and displays for RNC field days.

##### **6C4**

Farmfest display - inter-departmental liaison,

Anchorfield field day planning. This field day was cancelled due to the departure of the property Manager,

Successful first RNC field day at Durong on 2 April, 1986,

Representation at Small Farms Field Day, Beaudesert,

Preparation underway for field day in Millmerran district in September, 1986.

by G. Stone

#### SUMMARY OF EVENTS

##### **Northern Downs District**

###### **1P2**

Participation in preparation of Toowoomba Showground planning project.

###### **6C4**

Organisation of first RNC Field Day at Durong in April 1986.

###### **1E4**

Participation with Service display at Toowoomba Show and Farmfest 1985, also RAIPR Conference, Toowoomba.

###### **4M1**

Completion of CEP project Ravensbourne (\$31 000) for redevelopment of picnic grounds.

###### **4P2**

Bunya Mountains Management Plan compiled.

###### **4M2**

Major redevelopment of Bunya Mountains picnic grounds.

###### **4M1**

Site survey and plans completed for proposed Picnic/Campgrounds Bunya Mountains, Lake Broadwater, Crown Nest.

###### **4C4**

Strong support being maintained through Natural History Association at Bunya Mountains and Lake Broadwater.

##### **Southern Downs District**

###### **4M1**

CEP project at Main Range (\$78 000) for development of campground and carparks at Spicer's Gap and new track system.

###### **4M3**

New carpark provided at Cunningham's Gap and Main Range HQ, road resurfaced by Main Roads Department.

###### **4N1**

Fire History map and action plan prepared for Main Range NP.

###### **2M2**

Girraween information centre display almost completed.

###### **4N1**

Continued construction of firebreaks around boundary of Sundown NP - another 6 1/2 kilometres.

###### **4M1**

Sign routing for Sub-Region continuing at Girraween NP.

###### **4M1**

New toilet block constructed Queen Mary Falls.

##### **Wildlife/RNC**

###### **2S1**

DWR Turnbull spent a total of 23 days as relieving SWR Moggill during absence of SWR Connolly.

###### **6C1**

Section 25 permits crop/pasture damage Kangaroos 117

Problem magpies 87 birds captured and either relocated, feathers removed from one wing or held until problem period over.

###### **6C2**

19 offences were detected and reported on resulting in:

Three prosecutions with a total of \$550 in fines and \$4310 in Double Royalty.

Three prosecutions pending  
Thirteen Warning letters sent

Fauna involved: birds	135
kangaroo skins	273
two traps	

Numerous patrols, in conjunction with PFPS were carried out in the Sundown NP area in relation to illegal shooting.

###### **6C4**

Continued liaison with other Government Departments

A series of lectures on FCA and RNC were conducted at Toowoomba, Roma, Charleville, Gympie, Moggill and Mineral House. There was a good response to these and feedback has been very encouraging.

#### 6M1

A security fence was constructed around the fauna pens; this also provided an area where macropods can be held. A possum cage was constructed outside the main fauna holding facilities.

#### South-West District

Administration Officer (Charleville) has been appointed to the Board of the Outback Queensland Regional Tourist Association. This appointment arose in anticipation of the eventual declaration of National Parks etc in Western Queensland and the important role of tourism in these declarations.

We have expanded our interpretation activities in South Western Queensland. The Wildlife Display at the Charleville Office is nearing completion. It consists of a Noctarium, containing seven species of native rodents and marsupials, a colony of yellow-footed rock wallabies. Individuals from eight other macropod species and a bird display of local species. The ultimate goal is to link the wildlife display to RNC concepts of habitat retention. To date the display has been an outstanding success. It is proposed to complete the display by acquisition of a pair of brush-tailed bettongs (Bettongia pencillata) a subspecies of which, Bettongia pencillata tropica, still exists in restricted localities in north-eastern Queensland and a pair of squirrel gliders (Petaurus norfolcensis) which occur locally. The purpose behind these additions is to complete a wildlife interpretation program containing the following groups:

Macropods which are relatively independent of habitat and tolerant of changes and therefore managed through a commercial harvesting program: Red, grey kangaroo, wallaroos etc.

Macropods which are very dependent on a particular type of habitat and which are rare but extinct in Queensland: Yellow-footed rock wallaby.

Or virtually extinct in Queensland and which require some form of habitat

retention/reservation: Bush-tailed bettong.

Native rodents and marsupials which are totally habitat dependent:

#### Noctarium Display

Arboreal marsupials which are habitat dependent and threatened by clearing (ie RNC can mean survival): Squirrel Glider.

Local birds as available: Aviary display.

Mr Smith has manned an interpretative display at the 1986 Mitchell, Charleville & Cunnamulla Shows. This has been well received and will become a regular event along with the Blackall Show.

Administration Officer recently took part in a Disaster Co-ordinator Exercise involving planning a response for the hypothetical crash of a large aircraft 200km west of Charleville. The exercise involved over 40 representatives from Government Authorities, Hospitals etc.

There are now six full-time employees at Charleville with responsibilities for Wildlife, Research, RNC, management and interpretation/extension. Conflicting needs are making it increasingly difficult to meet vehicle requirements. An additional vehicle (a Commodore or Falcon station wagon) will be needed eventually.

Cash receipts for this financial year to date are as follows:

Item	Description	Receipts
2	Kangaroo Tags (since February 1986 only)	\$34570
5	Permits to Remove	1267
7	Permits to Keep (class E licence)	323
3	Fauna Royalty	307
1	Open Season Fauna Permits	159
8	Class A Licence fee	45
9	Class B & C Licence	60
15	Expenditure Recovered	15
13	Miscellaneous	28
26/27	Posters & Maps	188
	Total Cash Receipts	<u>\$36962</u>

The appointment of Mrs S. Galway as Administration Assistant in March 1986 has proven successful. Mrs Galway's main role is to answer counter enquiries and process tag applications, although she also feeds the display animals and

does office typing and accounts when time permits.

Other staff continue to work well and have adapted to the changing duties resulting from our expanding role in South West Queensland.

All buildings remain in good condition. - The problem of security which arose with the advent of tag sales has been solved by the installation of weldmesh window screens and a door on the tag storage and distribution room.

An evaporative airconditioner has been purchased for the Ranger's residence and this will be installed in the 1986/87 financial year.

A reverse-cycle air conditioner has been fitted to the animal house preparation room to allow use of the room for research purposes.

The head-boiling facility has been transferred to Hermitage.

The freezer-room remains unused except for emergency situations. The unit is run for short periods each month to prevent damage. Economics prevent its continual use.

The grounds are in good condition. The project for the 1986/87 financial year is the landscaping of the macropod yards by tree planting and provision of 'natural' type shelter for resident species.

Foot netting is being fitted to the boundary fence to reduce the feral and domestic cat problem. It will probably be necessary to install an electrified wire along the top of the fence.

Budget allocation for 1985/86 financial year was adequate to meet our needs.

### IST 3

Acquisition of the first mulga-land national park, 'Thrushton' (north-east of Bollon), had a very rough beginning due to problems of timing and local objections. Much effort has gone into smoothing troubled waters. The acquisition is now completely in the political arena. Hopefully, we have learned, as an organisation, from these problems.

The future of Lake Pure and Lake Bullawarra remain in doubt. The Lake

Pure proposal requires further scientific support while the Lake Bullawarra proposal awaits a meeting between myself, the leasee, and the local Land Commissioner.

The proposal to change the status of Milo Fauna Sanctuary to Fauna Refuge awaits a meeting between the principle shareholder of the company, the property manager, and myself. This meeting is scheduled for June 1986.

Submissions have been prepared for the declaration of a number of Fauna Sanctuaries in South West Queensland. The most important in terms of local kudos, is the Mitchell Weir proposal. Although Fauna Sanctuary classification seems to be falling from favour within the Service it still represents in many situations the only form of input we will get into an area. As with Milo there is always the chance for a better classification at some future date.

### IST 4

Mariala Special Purposes Reserve has now suffered three separate oil/gas surveys since 1982. Environmental damage has been minimised by detailed discussion with the surveying company. Results of the most recent survey will be available in the near future. An interesting offshoot of the most recent survey was the discovery by Mr McRae of fresh dung from the yellow-footed rock wallabies, at two sites in the northern portion of the reserve. Because of this we will retain the tightest control possible over any future drilling or surveying.

Management of Thruston will be complicated by the vehement opposition of adjacent landholders. A resident officer has been one of the platforms on which local support has been sought. The major fear of locals seems to be wild dogs.

Continual complaints of wild dogs breeding in Mariala have been investigated by the local Stock Routes and Rural Lands Board officer. He was unable to find any evidence to support these claims. An approach by the landholder on the eastern boundary to bait with 1080 inside the reserve was refused.

A survey of kangaroo problems on Lake Broadwater Environmental Park was



undertaken in March 1986. A number of recommendations arose from this survey.

## IST 6

### Research

Since the Research Workshop at Charleville in the early part of this financial year we have been working on the pre-requisite ground work for our research programs. The output of this program has been reduced by my involvement with other aspects of Service activities. The following has been achieved within the research programs studying aerial/ground surveying techniques and patterns in the commercial harvest of kangaroos.

- a A data base for the harvesting patterns research has been found and the first run is expected in June/July.
- b Kangaroo dealer data from the years 1980, 1981, 1982, 1983 and 1985 is now available for correlation with this data base.
- c The study area for the density patterns research has been established on Milo Sanctuary and the first two ground counting exercises completed. Data from these have indicated problems with the methods of counting chosen and further work is required in this area.
- d The first aerial/ground surveying exercise is to be conducted in Milo in late May 1986. Further plans for this research await the results of this exercise. (The long delay in this part of our research was beyond our control or influence).
- e The kangaroo management/research computer program which crashed in late 1985 has been resurrected and is now producing the first year's data on kangaroo shooters and dealers. More problems have arisen however due to limitations of storage space.
- f Research into yellow-footed rock wallabies was completed in late 1985 when a colony was established in Charleville. Future research will now be a very low level priority and a draft plan of management will be prepared late 1986.

by D. Seton

### Wildlife

District Ranger, K.S. Smith commenced duty in August, 1985.

All major A Class fauna dealer sites have been visited in 1986.

Assistance has been given to local police in connection with various breaches of the Fauna Conservation Act.

A fauna display has been established at the Charleville complex and has resulted in considerable kudos for the Service.

As part of our interpretation program various talks and activities have been undertaken with district schools.

Interpretation activities have continued with the School of the Air.

Mitchell, Charleville and Cunnamulla shows were visited in 1986 with a display concentrating on the RNC program and our wildlife display.

Three fauna sanctuary proposals have been inspected during the past year and submissions made.

District Ranger Smith and Administration Officer Wellard attended a wildlife ranger meeting at Lake Broadwater in December 1985.

A training program for ex-officio fauna officers was held at six locations in the southern region during June. Administration Officer Wellard participated in this course and District Ranger Smith attended the Charleville School.

by G. Wellard

### DOWNES - NORTHERN DISTRICT

#### 4P1

Bunya Mountains Management Plan was completed. Input was received from park and regional staff as well as interest groups ie NHA Forestry etc.

#### 4N2

Continued Groundsel and Lantana control at Crows Nest.

Continued feral pig control at Broadwater.

Newly implemented feral cattle control program at Bunya Mountains (trapping and shooting).

**4N7**

Continued at Lake Broadwater and Bunya Mountains through NHA'S.

**4N8**

Liaison with Wambo Shire and other interest groups over diversion banks constructed adjacent to Lake Broadwater designed to harvest into the lake.

The Service expressed its concern over this and other schemes which were considered undesirable in the longer term.

**4C1**

A new position (O/S Public Information) was created at Bunya Mountains (using existing district positions) to undertake Public Relations and interpretive duties.

This position was considered a high visitation on the park and the new information centre being constructed.

Camp booking system continued on all parks successfully.

**4C4**

Continued liaison with:

Shire Councils; particularly -  
Wambo  
Tara  
Kingaroy  
Rosalie  
Pittsworth  
Millmerran

Natural History Associations -  
Bunya Mountains  
Lake Broadwater

Forestry re - Management plans  
- training  
- equipment

Queensland Recreation Council - Toowoomba  
- Dalby

Other interest groups -  
Broadwater Association  
Darling Downs Water Ski Club  
Schools (Work Experience)  
DDIAE  
QAC

Neighbours - continued contact by local park staff

**4M1**

Development plans were completed and approved for:

**Bunya Mountains** - Dandabah Picnic Area  
- Dandabah Camping Area  
- Westcott Picnic Area

Surveys were undertaken of:

<b>Crows Nest</b>	-	Picnic Area
<b>Lake Broadwater</b>	-	Camping Area
<b>Bunya Mountain</b>	-	Burton's Well
		Camping Area
	-	Saddletree
		Camping Area
	-	Ensor Forest
		Camping Area

**Lake Broadwater**

Toilet block renovated and upgraded - cost \$2 000  
Double pit toilet materials purchased - cost \$4 000

**Bunya Mountains**

Work commenced on new information centre allocation \$35 000 + \$12 000  
Work commenced on Picnic Area redevelopment \$5 000  
Work commenced on Westcott Picnic Area

**Ravensbourne**

A CEP project was approved and undertaken at Ravensbourne for picnic area redevelopments. Three people were employed for twenty weeks.  
Cost \$11 000 materials  
\$20 000 wages

**4M2**

Continued maintenance on all parks

New Wheely Bins installed at Bunya Mountains providing cleaner rubbish disposal points and easier removal of rubbish by staff.

Firewood obtained in bulk from Ravensbourne mill for all parks - minimum cost involved.

Review of maintenance programs underway for all buildings etc.

**4M3**

Broadwater - works on upgrading road access were completed - cost \$2 000.

**Bunya Mountains**

Security area was constructed for use as a Works depot and storage area.

**4M4**

Ongoing all parks - minor.

Review of maintenance programs underway for all buildings etc.

**4N1**

Minor control burning was undertaken at-  
Ravensbourne  
Crown Nest  
Bunya Mountains

Supervision of shot lines put through  
Alton NP by oil exploration crew resulted  
in minimum damage to the park.

**Staff****Transfers**

Brett Roberts from Bunya Mountains to  
Girraween  
Doug Reinke from Cooloola to Bunya  
Mountains (as OIC)\_

**New Appointments**

Felicity Stroppiana from Mackay office  
to Bunya mountains (as O/S Public  
Information)

**Temporaries**

Two temporaries employed for three  
months each (at Bunya Mountains and  
Crows Nest)  
Two temporaries employed for three  
weeks over Christmas period.

**CEP**

Five persons employed for various  
periods at Ravensbourne. One kept on  
as administrative support in Toowoomba  
office.

**Work Experience**

Approximately 10 students involved in  
work experience.

by C. Murphy

**SOUTHERN DOWNS****Main Range National Park****4C3**

Planning and execution of Scenic Rim  
walk for International Youth Year.

Interpretive activities carried out  
include spotlighting, guided walks,  
talks, slide shows, attending displays  
at Warwick and RNA.

**4M1**

Development of campground at Spicer's  
Gap, carparks at Moss' Well and  
Governor's Chair, trail construction Mt  
Matheson (1985 CEP project).

Construction of carpark at crest (MRD)

**4M2**

Kubota tractor obtained from Fleay's

**4M3**

Resurfacing of Main Range HQ carpark.

**4N1**

Preparation of Fire Action Plan and map  
overlays of fire history and park  
neighbours  
Inspections of SGP's.

Assistance to Girraween in fire  
fighting.

**4P1**

Flora survey for management plan.

Preparation of list of neighbours for  
Main Range and Mt Mistake NP's.

Inspections for Mt Dumaresq EP proposal

**4P2**

Discussion and preparation of Neighbour  
Questionnaire. Draft written.

Meetings with Greg Oliver regarding  
Management Plan.

General management planning with D/R  
B. Porter.

**Sundown National Park****2A2**

16% administration and office HO  
inspections and staff meeting.

**4C1**

8% visitor information, issuing permits.

**4C3**

19% slide shows, guided walks, work on  
Sundown Mine Historical Brochure and  
History of Sundown Land Tenure.  
Production of provisional vegetation  
map.

**4C5**

22% park patrols.

**4M2**

14% routine maintenance of campground.

**4M4**

10% maintenance of homestead. Cleaning  
and painting of workman's cottage.

**4N1**

11% re-vegetation and propagation of  
plants. Construction of 6.5 kilometres  
of firebreak around Sundown boundary.

**Girraween National Park**

## **2A2**

9% administration and office.

## **4C1**

18% visitor information and issuing permits.

## **4C3**

12% guided walks, slide shows, movies, and talks to groups.

## **4C5**

16% park patrols.

## **4M1**

8% sign routing and sign construction.

## **4M2**

30% rubbish collection, toilet cleaning, distribution of fire wood, painting picnic tables, track maintenance.

## **4M4**

5% maintenance of workshops and barracks.

## **4N1**

2% wildfire control.

by Brett Porter

## **WIDE BAY/BURNETT**

### **BUNDABERG DISTRICT**

#### **Estate Development Maintenance**

CEP Baldwin Swamp EP Bundaberg \$138716 commencing 19 May 1986. Excavation, rehabilitation, revegetation, walking tracks, boardwalk construction. Nine people - 32 weeks.

\* NB Joint project with Bundaberg City Council who contributed \$30 000 to the project.

CEP Mon Repos - completed January 1986. Construction of visitor facility building workshop, nursery, excavation and rehabilitation, revegetation (6 500 trees to date).

Landscaping of carpark and facilities area value \$200 000. Ten staff 42 weeks.

Road subsidy \$20 000, bitumen access road to Mon Repos Base - upgrade carpark area.

Mon Repos Birdhide - Volunteer project half of cost (\$1 000) provide through Wildlife Preservation Society (executors of a bequest of Mrs Rows (Bundaberg) will.

Woodgate CEP Project \$39 500. Four staff 32 weeks. Completed October 1985. Weed control, firebreak construction, pedestrian bridge, picnic area development, campground redevelopment.

Cania Gorge NP. Construction of toilet block. Materials funding Monto SC \$25 000. Design - construction by Service staff. Completion date 26 May 1986. Acquisition of Service Base - Moontard School.

Auburn River NP. Upgrading at campground

#### **Management Planning**

Mon Repos EP. Ongoing planning by the Management Planning Committee has been hindered by legal complication: involved in the acquisition of land.

Baldwin Swamp EP. Joint planning with the Trustees, Bundaberg City Council has produced a development plan proposal.

Site Surveys of existing campgrounds and picnic areas and proposed future developments Auburn, Cania, Woodgate, Mon Repos, Baldwin Swamp.

#### **Estate Resources Protection and Management**

Vegetation mapping at all major parks in the District is underway. The first, Woodgate NP has been completed.

Woodgate NP Fire Management Committee is working well. Nearly all objectives have been achieved.

Weed control - Groundsel - Woodgate, Prickly Pear - Mon Repos, Morning Glory vine Burnett - Parks - making some headway.

Turtles - Mon Repos. Revegetation work will provide a buffer between rockery and hinterland work on visitor management facilities has been halted due to legal complications.

#### **Public Contact - Communication**

Visitor information sheets - Woodgate, Mon Repos, Cania Gorge, Auburn River and Burrum.

Various on and off park interp activities. On park - Mon Repos, Woodgate, Cania. Off park includes schools, various interest groups.

Greenspace Committee - Bundaberg District. Active member of this committee which is encouraging and advising revegetation projects in the area.

Volunteer Projects. Mon Repos - Birdhide, Auburn River - Walking track construction.

by P. Kummerow

## **GREAT SANDY DISTRICT**

### **Major Achievements**

The establishment of a ranger base, workshop and camp ground at Waddy Point on Fraser Island.

A total beach clean up of all beach areas contained in the national park at Great Sandy and Cooloola (CEP).

The release of new visitor information sheets for Fraser Island.

The establishment of an information and permit issuing office at Rainbow Beach.

The revegetation and camper rotation of badly eroded camp sites by way of planting trees and grass.  
Road hardening and access in the vicinity of Waddy Point.

### **Management Planning**

Planning is still progressing for a Recreation Plan for Fraser Island.

Planning is still progressing for Cooloola.

### **Estate Resources, Protection and Management**

A severe fire occurred at Cooloola with several thousand hectares of bushland being affected.

Control burns were successfully carried out at Great Sandy and Cooloola.

Deliberately lit fires are still a problem.

### **Public Contact and Communication**

Cooloola and Great Sandy have holiday interpretive programs and Great Sandy has a semi permanent program for the full year.

Interpretation is an established part of all parks staff works programs.

## **Estate Development and Maintenance**

A beach clean up at Cooloola was included in a \$30 000 CEP project.

A beach clean up at Great Sandy was part of a \$175 000 CEP project which also included road hardening, Ranger base, campground tree planting, refuse disposal system.

by M. Johnston

## **GYMPIE DISTRICT**

### **Administrative Support**

#### **2M2**

A start has been made on a new district office at Gympie.

#### **2M3**

Elanda house and fencing painted using CEP labour. New water tank supplied.

#### **2M1**

New aluminium Kingfisher boat supplied to replace Darkes.

#### **2T**

Greg Walker transferred to Noosa as Management Area Overseer.

Steve Johns appointed as Nambour Management Area Overseer.

Reduction in overall staff numbers coupled with an increased workload is a cause of serious concern to all staff adversely affecting morale.

### **Mainland Estate Management**

#### **4P1**

Natural resource assessment of the Lake Weyba catchment and other Sunshine Coast areas is being carried out by Moggill and local staff.

Dr D. McFarland is carrying out research into the ground parrot within Cooloola NP.

#### **4P2**

Strategy plans (draft) prepared for Noosa and Elanda.

Interpretive plan prepared for Noosa by L. Naumann.

#### **4N1**

Arson is the suspected cause of a fire which burnt out block 7, Cooloola NP.

Fuel reduction burning has been carried out within Cooloola NP, on NP 1161,

and Noosa NP. Burning was also carried out on VCL to protect Teewah Village.

Approximately 160 car bodies on or adjacent to EP 1450 have been buried on site by Noosa Shire Council.

Cooloola Fauna Reserve has been de-gazetted and re-gazetted as D and O Purpose Reserve.

A change in district boundaries has occurred to include the Conondale NP's and some Landsborough SC 'EP' into Gympie District.

An area of 54.5ha has been added to Kondalilla NP.

#### 4N2

All centres are involved in assistance to the public for native fauna control off-park, especially removal of possums and magpies. Our input in this area continues to grow and is an increasing responsibility.

#### 4N5

Fuel sampling for fire research continues in Cooloola NP.

Visitor research into Noosa NP was carried out by Rob Tonge and Associates.

#### 4N2

A groundsel eradication CEP project was carried out on Elanda.

Water buffalo escaped into Southern Cooloola NP from private land near NP 1161.

Groundsel eradication has been carried out on most EP's by each council in Maroochy and Noosa Shires.

#### 4C1

New park information sheets have been prepared for Noosa, Kondalilla and Mapleton parks.

Gympie office staff are involved in issuing permits for Fraser Island.

New interpretive signage for the Mangrove Loop Walk at Kinaba has been delivered.

#### 4C3

Kinaba staff assisted with the filming of Bush Beat.

Interpretive talks are carried out on all manned parks but especially at Kinaba. This also includes talks to students at schools.

#### 4C4

Liaison with various individuals and groups as volunteers continues.

A new group of volunteers has been founded for Gympie District.

Effective liaison continues to be carried out with all Shire Councils but especially Noosa and Maroochy, also with Commonwealth Departments in relation to CEP projects.

Much effort has recently been put into Rural Nature Conservation activities. This has included:

Liaison with other government departmental officers eg Soil Conservation, Forestry and DPI extension officers.

Liaison with various farmer groups at field days and seminars.

Liaison and advice to individual farmers with some farm visits plus assistance with staffing.

Liaison with local stock and station agents.

An Elanda Plains Advisory Group was convened from representatives of Forestry, DPI, Noosa Shire Council and Stock Routes to advise on management of Elanda Plains.

#### 4M1

Redevelopment of the Noosa picnic area and adjacent walking tracks is under way.

A new elevated boardwalk and track system allowing access across Peregrine EP has been completed.

A new picnic and camping area with composting toilet at Fig Tree Point is under way with adjacent walking tracks.

A new wilderness walking trail is being developed in the upper Noosa River catchment.

New signs continue to be erected in almost all parks.

A telephone has been installed at Kondalilla NP

#### 4M2

Maintenance of buildings, picnic areas, walking tracks signage etc continues in all parks. Some vandalism occurred, especially at Mapleton NP.

#### 4M3

Noosa Shire Council upgraded the Harry Springs Hut road at Service cost.

Some internal tracks at Noosa NP have been widened to allow passage of vehicles for fire and emergency use.

Noosa Life Savers have installed emergency equipment at Alexanders Bay, Noosa NP.

A new firebreak system around Teewah Village was developed with assistance from Noosa SC.

A heli-pad site was developed on top of the Kondalilla Falls.

An experimental solar pump was installed at Kinaba by Dr I.E. Edmonds of QIT.

Liaison is being carried out with Noosa SC regarding development of a new water tank - lookout at Laguna Lookout, Noosa NP.

#### 4M4

General fencing, stockyards and road maintenance has been carried out on Elanda.

#### 4M5

Local staff have had some input towards a tourist lease development on Laguna Lookout, Noosa NP.

#### 4M6

Site Surveys have been carried out for Noosa picnic area, Fig Tree Point, Harry Springs Hut, Campsite 3 (Noosa River).

#### 4M0

Fencing of an EP in Murgon Shire has assisted a park neighbour in domestic stock control.

by Ron Turner

#### SUMMARY OF EVENTS - MORETON SUB-REGION

#### 2S

Additional Ranger position CSR  
4 additional permanent wages positions -  
2 St Helena  
1 Moreton Island  
1 Moreton Bay

45 temporary wages positions -

31 CEP Fleays  
10 CEP Springbrook  
2 NESA Fleays  
1 NESA Moggill  
1 Temp Green Mountains

#### 2A

A successful integration of Wildlife Management section and Mainland Estate has resulted in a more effective management of Service Estate as well as a much improved public profile in dealing with fauna matters. Staff have become more rounded Service officers displaying a professional Ranger image.

Expansion of office space at Moggill has resulted in Moreton sub-regional staff occupying an extra wing thus facilitating more effective communications.

#### 2M

Sub-regional store was able to be adequately stocked which enabled more efficient purchasing and supply to the field. (Securing the store by enclosing the mezzanine floor has kept the light fingered Wide Bay Burnett staff under control although my Subaru wheels still managed to disappear!)

New accommodation has been established at Pine Ridge with 2 staff initially transferred there. ie 1 Overseer to handle general park management, interpretation and wildlife matters and 1 carpenter for regional construction and maintenance work.

#### 4P

Joint recreation opportunity plan with NSW NPWS for Lamington and Border Ranges.

St Helena Bicentennial Project planning for visitor use of St Helena Island.

Preliminary planning for Bribie and Southern Moreton Bay.

#### 4C

Scenic Rim Walk for International Year for Youth has set the guidelines for subsequent annual events.

Law enforcement investigations have been stepped up in patrolling flea markets to track down plant thieves. This is a joint Forestry/Q.NPWS initiative.



#### 4N

Much improved level of funding. Regrettably a large portion of the allocation was recalled owing to ledger malalignment.

Few fires occurred - the worst being Moreton Island.

Weed School qualified 20 field staff by awarding with AC/DC licence.

#### 4M

##### **Two new CEP projects undertaken:**

Tallebudgera Greenspace CEP -	\$1 000 000
Springbrook redevelopment CEP -	\$ 300 000

##### **Loan Works Program:**

Springbrook house extension -	\$ 17 000
Pine Ridge acquisition and renovation -	\$ 14 000
St Helena staff facilities -	\$ 8 000
Tambourine toilet (Contribution to BSC) -	\$ 15 000
Witches Falls lookout -	\$ 3 000

##### **Road subsidies:**

Glasshouse Mts roads (Landsborough SC) -	\$ 10 000
Natural Arch carpark (Albert SC) -	\$ 3 000

##### **EP's**

Currimundi fence -	\$ 5 000
Bribie toilets -	\$ 6 000
Sheep Station Creek fencing -	\$ 5 000
Venman's redevelopment -	\$ 10 000

#### **EASTERN SCENIC RIM**

##### **2M0 Property Management**

###### **2M1**

Springbrook - Equipment totalling \$39 987.00 was purchased for the Springbrook Redevelopment Project - CEP including 4WD tractor, refrigerator, electric welder, oxy set, 2 chainsaws, 2 brushcutters, handmower, storage and machine shed, various power and hand tools.

###### **2M2**

Springbrook - As part of the CEP project work was started on the redevelopment of the office/information centre. Material and contract work cost \$10 060.00 and

works involved construction of a verandah and outdoor display area, 60m of boardwalk, a lookout platform, 50m sealed walking track, restumping of building, cork tile floor covering in building, and landscaping works around building.

###### **2M3**

Springbrook Extensions to Service Residence were completed for \$17 013.00. Works included the provision of a new bathroom and a laundry, extended kitchen, additional bedroom and the connection of mains power to the residence. A carport was also provided with connected covered walkway to the residence.

##### **4N0 Estate Resources Management and Protection**

###### **4N1**

Springbrook Revegetation works were carried out at Tallanbana picnic ground and at the office/information centre and approximately 1050 plants were planted out, watered in and mulched.

##### **4C0 Public Contact and Communication**

###### **4C3**

Springbrook - About 15 group interpretive talks were given. Due to improvements to the information centre and additional staffing during the CEP project it has been possible to man the centre considerably more often and longer than was previously possible. This has improved relations at Springbrook NP with both the visiting public and local residents alike.

##### **4M0 Estate Development and Maintenance**

###### **4M1**

Springbrook - Work has commenced and has been mostly completed by the CEP project throughout the Springbrook Management Area. New sealed carparks have been provided at three locations, renovations were made on two toilet blocks, a pergola was added to a shelter shed and extensive landscaping works, signage and new park furniture were all provided at two locations.



#### 4M2

Springbrook - A substantial timber bridge at Natural Arch NP which was extensively damaged by a treefall during a storm in 1985 was repaired, taking approximately 2 months to complete. Materials and equipment hire cost \$1 150.00.

by P. Grimshaw

#### Tallebudgera Greenspace

##### 4M0

The Services largest single development project at the Tallebudgera Greenspace on the Gold Coast is well under way.

The project was funded in 1985-86 by a \$1m CEP Grant, with the Gold Coast City Council being co-sponsors.

Developments include linking Burleigh Head National Park and Fleay's Fauna Centre with 2kms of bitumen walking tracks, wooden bridges and mangrove boardwalks. Bird hides and jetties will also be features of the walk.

The construction of a \$460 000 (?) staff and visitor facility at Fleay's Fauna Centre has commenced as part of the State Works Department rolling program.

Major revegetation and habitat modification has been implemented and 1.5km of track and boardwalk constructed at Fleay's Fauna Centre in preparation for the opening of the centre to the public as display of free range wildlife.

The project employed an additional 31 staff for the 12 month period.

##### 4C

The Cold Coast Advisory Committee was established to determine planning guidelines for the historic and cultural significance of the parks. The Committee comprises members of Kombumerri Aboriginal Corporation for Culture, University of Queensland Anthropology Department, Department of Community Services and Q.NPWS.

#### Pine Ridge Environmental Park

##### 2A0

The first step in the creation of a District centre at Pine Ridge Environmental Park on the northern Gold Coast was implemented with the acquisition of suitable land and facilities here and the transfer of two

positions to this location.

#### Fleay's Fauna Centre

##### 6N2 (Special Species Management)

A new breeding cage was erected to house Dr. Fleays Powerful Owls. The structure measured approximately 10m x 4.2m, and is 5m high at the back of the cage.

The cage was constructed using contract labour and was completed and housing birds within 10 days. A small enclosure measuring 5m x 5m, consisting of a sheetmetal perimeter fence was constructed to house a pair of potoroos which arrived from Adelaide Zoo.

##### 6C2

Jointly with the Interpretive Officer from Moggill, a display featuring wildlife was set up for the Albert Aussie Day Weekend. This proved to be a popular display with the many visitors who inspected our display, as well as with the organisers of the event.

The Service display caravan was used to promote the Service at the Gold Coast Show, Mudgeeraba Show, Coolangatta Fun Fiesta and a display at the Southport State School.

by P. Chapman

#### Springbrook Management Area

##### 2M1

A considerable amount of machinery was purchased using CEP funds totalling \$39 987.00. The following was purchased - a 33 HP diesel Yanmar 4WD tractor, refrigerator and wood stove for the barracks, electric welder, oxy set, 2 chainsaws, 2 brushcutters, hand mower, 4 bay storage and machinery shed, various power tools and various hand tools.

##### 2M2

Part of the CEP project involves the redevelopment of the office/information centre. The following work will be completed before the end of the financial year -

1 construction of verandah for undercover display when information centre is unstaffed	\$2 200.00
2 60 metres of boardwalk	\$ 900.00
3 construction of new lookout	\$1 300.00
4 50 metres of colas track	\$ 600.00
5 laying cork tiles on floor	\$2 560.00
6 restumping of building	\$2 500.00

Camper nights and visitor days have increased substantially in all centres with figures roughly 10% higher than last year.

by J. van Delft

#### **January 1985**

##### **4M10**

A track was constructed to the Lower Portals. This task was performed with the help of students from the QAC.

#### **May 1985**

##### **4M10**

An access road into Mt Barney NP was constructed by the Beaudesert Shire Council. With an initial contribution of \$10 000. Extra funds were also contributed towards materials for the construction of a fence.

#### **August 1985**

##### **4M10**

Pit toilet block (prefabricated) at Lower Portals carpark. Cost \$1750.

#### **November 1985**

Acquisition of land annexed to the Mt Barney NP \$250 000. (refer Mt Barney file) Regional Office.

by P. Lehman

#### **Boonah Management Area**

##### **Mt French**

Concrete bases constructed around 3 BBQ's. 160 metres base construction for disabled walking track.

##### **Mt Greville**

Gravelled area for carpark.

##### **Mt Edwards**

Upgraded 50 metres of walking track.

##### **Interpretation**

Visited 10 schools in Boonah Shire. Conducted 5 slide shows and talks at camping areas adjacent to Parks. Conducted guided walks for 4 school groups.

by K. Sullivan

#### **Binna Burra**

The majority of the work undertaken in this financial year has been reconstruction and maintenance of the walking track systems - mainly the Danes Creek Circuit (completed) and Shipsstern Circuit (ongoing).

An assessment of the weed species in the Binna Burra management area was carried out.

Some staff conducted interp activities during the holiday period with excellent assistance from LNHA.

Planning is underway for a Visitor Centre at Binna Burra.

Resource assessment is continuing and several previously unrecorded plant species have been found in the Park.

An attempt is being made to rationalise the bush camping system.

by B. Flenady

#### **Tambourine Mountain NP**

##### **4N**

Fortunately mowing of picnic area this year has not been so demanding as previous years because of lack of seasonal rains. We have deliberately decreased the mowing to let the grass thicken or mat. We have in the past years done the overkill in regards to mowing, ie cut too short to save time, and therefore bare patches appeared and weeds developed. Over the last four years I have done three things to combat the situation: (1) Implemented a fertilization program each year, (2) decreased the mowing, (3) raised the cutting blades up one or two notches depending on the terrain, missed the seasonal rains, but its working for me.

##### **4M**

We successfully built a lookout at Witches Falls National Park and celebrated National Parks Day by opening it to the general public. The director opened it and many VIP's who were there responded. Many thanks to the many volunteers who assisted us carrying materials to the site.

Early July we were able to carry out major track work at the beacon entrance to Witches Falls solely by the generosity of the Beaudesert Shire Council, who were working on a playing field and when asked what they were going to do with the over burden and if they had any over, what were the chances of getting some. At this juncture I would like to respond and say many thanks to the Beaudesert Shire Council who not only gave us the soil but who also when asked when their road

sweeper was in the district would they sweep the parking area at Cedar Creek, much obliged. When you have this kind of co-operation between different bodies it makes working conditions much pleasanter and rewarding.

Parking Bays at Cedar Creek at long last have been marked out and painted. I was on duty the other Sunday and they were working great. Hopefully the police will play their part now that all signs are erected, and discourage illegal parking from now on. We will wait and see. Gravelled parking bays at the Knoll and driveway at the barracks. Maybe through the BSC they might see their way clear to continue the bitumen up to the parking areas as it is a gazetted road. I discussed this with our local Councillor Dr Bill Coote, who was in favour of it. I will suggest it to him again when the time is right.

**General maintenance.** Cleaning of toilets and picnic areas twice weekly. Picnic furniture painted in Cedar Creek, Witches Falls, Palm Grove, and The Knoll. We have not been able to afford as much time as we would have liked on our tracks this year with our work load, still we were able to at least go over them once. Weekly firewood cut. This of course involves not only the cutting but the procuring of said item and carting to depot to be cut much smaller for the BBQ's. I can see a problem in the short term, as this resource material is practically an exhausted commodity.

Cedar Creek dug up and planted with couch from the Tamborine dump. Pity the seasonal rains didn't develop. By now it would have been covered. Released groundsel gall fly in the following parks - Witches, Cedar Creek, Knoll, and Corbould No. 3. Had to dig up the septic drains at Cedar Creek and relay them again. This was very dirty work. I think we will need to look at a small treatment plant for this area, as the ground is very porous and can't cope with the visitation we receive.

Work experience students for the year ended have been good. We all have been pleased with their performance and attitudes to their work.

Assisted in running two track training courses, one in Townsville and the other at Moggill. I held a course in

bush skills and plain table survey at Tamborine five years ago. I believe that could be repeated again. As a matter of fact I have had many inquiries asking when it will be repeated as they would like to do it, or do it again.

#### 4N

##### **Fire Management Central Scenic Rim.**

We had two out breaks of wildfires at Tamborine. One when our staff returning from fire fighting at Mt Barney stopped to fight one opposite Joalah NP, the other was in Corbould No. 3 by persons unknown. We will need to be on our guard this year as I believe if we don't get winter rains we will be in big trouble. Therefore all mechanical and hand held equipment should be maintained and on standby for all emergencies. I will propose a cool burn for the winter months of July to August for the western escarpment, running from the Beacon to Witches Falls, providing we receive winter rains.

#### 4C

Cars are continually being broken into at the Knoll, Joalah, Cedar Creek, even with regular patrols by myself and the local police we have not been able to apprehend anyone. We have been very close a couple of times. One of these days they have to slip up. They have been taking on an average \$400 a week, and that's a lot of money. It's mainly interstate visitors they hit.

Small cases of vandalism are still going on. It's beginning to be part of the system, i.e. signs either being defaced, stolen or broken, irrigation system being interfered with, ball bearings taken out of sprinklers, toilet dispensers and taps stolen, margin stones kicked out etc., etc.

Children taken on guided walks so far up to April - 589, with three groups for the coming month of May total 115.

Tree name identification signs have been put on trees in the following parks - Knoll, Witches, Palm Grove, Joalah, McDonald. They are of the standard of the forestry many years ago, you wouldn't know the difference, only they are new.

I have much pleasure in submitting this report for Tamborine.

Law Enforcement Patrols 162 hours.

by J. Johnston

### **Lamington Green Mountain**

Green Mountain has seen a huge increase in visitation as a result of redevelopment work by the National Parks and Wildlife Services.

(We were unable to read most of this report - poor photocopy - apologies to writer - can we see you re including article in next edition?)

### **MORETON BAY DISTRICT**

#### **Moreton Island NP**

##### **2S**

Steve Crane transfer to Main Range  
Steve Johnston transfer to Moggill  
Joe Adair to Moreton Island as Ganger from Main Range  
Jana Kabahka to Moreton Island as Ganger from Fleays CEP  
Ken Whitlock to Moreton Island as Senior Overseer, new

##### **2A**

Diesel Toyota Trayback to replace Petrol Vehicle.  
Trikes ceased operation.  
Answering machine for office.

##### **2M**

5 Bay Shed constructed at Headquarters - \$24 000.

##### **4P**

Army surveyors assist Desert Access, Middle Road and potential camp site behind False Patch.

##### **4C**

Seminar at Tangalooma for Resort and Q.NPWS staff.  
Assist DMS with new Sunmaps.  
Attend Koorringal and Cowan Cowan Resident Association Meetings.  
Walks, talks, slides, movies and information for schools, campers etc.  
Jana attended interpretation school.  
Regular patrols.  
Liaise resort/ Police/ Locals/ Boating patrol/ Lighthouse/ Museum.

##### **4N**

1 Fire 25% of Island - January 1 - 25.  
2 Fire breaks constructed - Cowan  
Cowan  
- Bulwer  
- Tangalooma  
3 Fire school attendance organized

4 Central burns - Cowan Cowan  
- Tangalooma  
5 Revegetate frontal dunes on central western beach  
6 2 Feral pig baiting programs  
7 Army assistance with major clean up  
8 Consultation with Museum re Aboriginal sites.

##### **4M**

1 Complete Ben Ewa campground  
2 Road works with army assistance  
3 Close and revegetate unused roads.

#### **St Helena Island NP**

##### **2S**

Up to 7 prisoners from Boggo Road Jail  
2 Education Department Teachers seconded to park  
1 DMS draftsman seconded to Q.NPWS for 1 year.

##### **2A**

New John Deere tractor  
Government garage supplied Escort Panelvan  
Upgrade power supply from Radio 10  
Answering machine for office  
Moorings leased Manly Jetty and East Coast Marina  
Trike supplied ex Moreton Island.

##### **2M**

Extra caravan for staff accommodation  
Nursery started  
Large storage/workshed erected  
Gas fittings to vans upgraded  
New Kubota tractor.

##### **4P**

Very detailed mapping commenced  
Buildings etc. photographically surveyed.

##### **4C**

Regular guided walks  
Sign plan developed and signage commenced  
Tour guide information sheets drafted  
Social day Q.NPWS and Boating Patrol  
Liason schools/Radio 10/Tour operators/Museum/Prisons  
Department/Barge Operators/DMS/potential lessees/Lands Department.

##### **4N**

Massive on going clean up of rubbish  
On going weed control  
Recording of historic items  
Revegetation at end of causeway  
Introduction of Red Necked wallabies

**4M**

Toilets and water supply near boatshed  
Construction of new jetty commenced.  
New (temporary) workshop constructed.

**Vennans Bushland Reserve EP****2A**

Trike supplied ex Moreton Island

**2M**

Workshop tools/Generator/Fire Pump

**4P**

Aerial photos of park flown

**4C**

Park map produced at 1:4000  
Park information sheet drafted  
Liaison Jack Vennans/Redland Shire Council

**4N**

Control burn

**4M**

Road reforming  
General park maintenance

**2S**

Up to 7 prisoners used to assist on  
park approximately every 8 weeks.

**Blue Lake NP****4C**

Visitor information sheet  
Patrols  
Christmas interpretive display

**4M**

Closure of unnecessary tracks  
Repairs to Stage I development

**Tarragindi EP****4C**

Patrols

**4N**

Fell 2 trees overhanging neighbours  
yards

**Other EP's****4C**

Patrols  
Liaise with councils

**4N**

Clean up rubbish

**CANNING DISTRICT****Beerwah Based Parks****2S**

Jerry van Delft transferred to Central  
Scenic Rim.

**2A**

Service Base established at Beerwah  
Answering machine installed in office

**4C**

Regular patrols  
Regular interpretive talks  
Signage erected  
Visitor information sheet  
Good liaison Caboolture and Landsborough  
Councils  
Considerable vandalism

**4N**

Weed control and rubbish removal at  
Wanarba EP  
Fire plan underway  
Merburium collection underway  
Weed management plan for Glasshouse  
Mountains done

**4M****Lake Currimundi EP**

Fence and firebreak \$5000  
Revegetate frontal dune  
Modify boardwalk

**Mt Tibrogargan NP**

Track delineated to top of mountain  
Access road upgraded through Road  
Subsidy Scheme by Landsborough SC  
\$10 000

**Mt Beerwah NP**

Stage I of picnic area development  
completed  
Revegetation done  
Stage II (carpark, walking tracks,  
signage) underway

by V. Bushing

**D'Aguilar Range National Parks (Mt  
Glorious)****2A22**

Mt Glorious staff were fortunate in  
being able to attend a number of short  
courses and schools during the year,  
which covered a rainforest  
identification school, a weed school and  
associated public exam in chemical  
application.

An "Earth Experience" course by Mr Van  
Matre (Interp) Brisbane Forest Parks

Resource Workshop and a Wildlife and Fauna Act enforcement lectures.

Mt Glorious staff were able to assist with training to a work experience student from Gatton College and two students from Toowoomba and instruction to five service staff, on guided walk and spotlighting techniques as applicable to rainforest.

#### 4C11

An information sheet was produced by Gil Field and Mt Glorious staff which is distributed to local shops, and during Ranger contact times on weekends.

#### 4C22

Neighbours were contacted with regards to the development of a proposed museum come food outlet. Six residents at Mt Nebo were approached with regard to their dogs hunting in Boombana. Several neighbours were approached concerning controlled burning adjacent to the four parks.

#### 4C34

Mt Glorious staff along with the much appreciated occasional assistance from Pete Milne, Tony O'Keef, Vic Bushing, Ric Natrass and several valuable occasions from Dorothy Finch, conducted 134 interpretative activities. These covered guided walks, lectures to senior Geography and Science students, the running of Brisbane Forest Park's "Go Bush", Migrant and Radio of the air camps.

In all approximately 3450 people attended D'Aguilar Range Parks run interpretation activities during the year.

#### 4C40

Two cases of suspected large scale epiphyte theft were investigated but proved to be legitimate, as they were taken from private land with the owners permission.

#### 4C50

Regular weekend and public holiday patrols were run as normal with ranger contact with the public taking place between 2.30 and 4pm on those patrol days.

A five hour mountain climbing rescue took place at the Glass House Mountains with the patient with a broken leg having to be lowered from the rock face.

#### 4M12

Two and a half months remained to the CEP development program for Maiala picnic area and during this time eleven slabs were poured to harden table sites. Six of those were alcoves and five of them had new BBQ added. Old bollards were turned into seating for a theatrette and an out door screen was erected. A communal fire pit was built, paths were constructed and approximately 300 shrubs and trees were planted out.

Subsequent to the CEP program the shelter shed was rebuilt and BFP provided new paint, gutters, paving stones and tables for the shelter shed. Work by Richard Clark of BFP and his CEP's was much appreciated.

A resource file was compiled by Denise, a CEP law student, on all parks in the Range.

A new drainage system was dug on the boundary between neighbour Fergus Wilson and the picnic area.

Three carpark bays were extended into the picnic area, allowing some twenty cars from a restricted area of the road, to move off the road verge.

Some of the old road system was ripped, allowing revegetation to be established.

Two work parties, one CEP and one of Mt Glorious staff went out on separate occasions, to the Connondales to repair some badly eroded roads.

#### 4M22

Regular track maintenance, mowing and wood supply was carried out, with two years worth of timber being acquired from and delivered by the Main Roads Department to Mt Glorious HQ.

#### 4M44

During the CEP period, Tim Moore and the CEP's rebuilt and expanded the nursery. Currently some 400 trees and shrubs are under shade cloth.

#### 4N12

A fire co-ordination system was set up with the Forestry Department having BFP as a back up if assistance is required.

### 2M3

A total of \$17 013 was spent on extensions to the overseers residence at Springbrook. This provided a new bathroom, laundry, bedroom, patio and carpark. Electricity was also connected to the building. Work commenced in August, 1985 and finished early October.

### 4N1

Extensive revegetation work has been completed at Tallanbana picnic ground and the office/information centre. Approximately \$1 450.00 was spent on buying indigenous plants to supplement the existing nursery stock. Approximately 450 plants were planted at Tallanbana picnic ground and 600 at information centre.

### 4C3

Approximately 15 interpretive talks were given to interested groups during the financial year. Interpretive facilities have been improved dramatically with the redevelopment of the information centre.

### 4M1

Considerable development work has been completed with the CEP project. New sealed carparks have been constructed at Goomoolaura and Tallanbana picnic grounds and the office/information centre. At Tallanbana picnic ground the following work has been completed -

- 1 pergola construction on the shelter shed
- 2 extension of roofline of toilet block
- 3 two new BBQ's
- 4 five new picnic tables and park bench
- 5 extensive landscaping at the information centre:
  - a extensive landscaping
  - b sealed track
  - c 60m of boardwalk
  - d timber lookout
  - e new signage
  - f upgraded access road

### 4M2

The timber bridge overlooking Natural Arch was repaired after suffering major damage during a recent mini cyclone. The repairs cost approximately \$1 150.00 and took approximately 2 months to complete.

by M. Hall

## CENTRAL SCENIC RIM DISTRICT

### 4M

The major development works for the 85/86 financial year were:

Construction of lookout at Witches Fall National Park - opened on National Parks Day.

Major track reconstruction at Binna Burra (Danes Creek circuit, Shipsstern circuit).

Mt French - development of disabled walking track to lookout.  
Mt Edwards track reconstruction and erosion control. New track up to base of Mt Greville.

Carpark development at Lower Portals and Mt Greville.

Pit toilet constructed at Lower Portals.

New BBQ's constructed at Mt French.

### 4P

Planning for visitors centre Binna Burra and facility redevelopment (Tambourine) completed.

### 4C

Public talks to school groups and campus increased with a greater emphasis being placed on the Boonah/Rathdowney area. Tambourine increasing public contact time but still below level expected.

District specific display boards were developed and used at shows. These will also be displayed in Information Centres and Council Chambers throughout the district.

Green Mountains, Mt Barney and Moogerah Peaks visitor information sheets were printed.

### 2T

Weed and Chemical Use School run by CSR for Sub-region.

### 4P

Draft Scenic Rim Infrastructure development plan prepared.

**Note** - visitation increase has highlighted need for additional management requirements in the Southern Lamington and Barney areas.



A controlled burn was conducted at Jolly's Lookout to assist with an ongoing grass research program by the University of Queensland.

An arsonist set fire to a section of Jolly's Lookout grass without any serious damage being caused.

A one kilometer fire break was pushed on the northern boundary of Maiala with the loan of the Glass House tractor.

#### **4N15**

Groups of 2, 3 and 5 Gliders were released into the wild along with a Goshawk in the year. Much valuable help in raising and protecting the animals coming from Gloria and Col Larson.

#### **4N51**

Entomological and flora researchers were directed to local sites in connection with deciduous natives, argyrodendrons and fasmits by Mt Glorious staff.

#### **4N59**

A weed list was compiled, being approximately 40 weeds, and three one day hikes have been undertaken covering about 1/4 of the area to complete a weed distribution map for Maiala. A hundred Groundsel plants infected with Gaul Fly were distributed in five different areas of light and heavy Groundsel infestation.

#### **4N72**

Researchers into BFP history were guided to all gold mine shafts on National Parks and areas immediately adjacent to them.

#### **4P10**

A resource file was compiled by a CEP law student Denise on all parks in the Range.

by J. Ravenscroft

# District Dialogue

## Northern Downs District

Preparations are being made for a proposed visitors day at Toowoomba office during the Carnival of Flowers in September. It is anticipated to have displays, information and practical demonstrations of sign routing, post and rail fence construction and picnic table construction. Extensions to the widely known post and rail fence in the office surrounds will be made in the near future now that we have the posts and rails cut.

The notorious 'mad Sicilian' is back for the annual magpie season. Peter Cantarella says that with present training, he'll have it down to four minutes to catch, pluck, and band a vicious magpie.

## Bunya Mountains

Construction of the new park office is expected to be completed by the end of September. Work has been hampered by three weeks of wind, drizzle and sub-zero temperatures.

Further work currently underway up there is the redevelopment of the Dandabah picnic and camp grounds.

## Crows Nest/Ravensbourne

In conjunction with the preparation of fire action plans for the Preseverance Management Area, we have constructed slip on fire fighting units for each of the manned parks in Southern and Northern Downs.

Preparations for landscaping and treeplanting are being made for early spring at Ravensbourne as part of ongoing redevelopment.

Overseer Errol Ryan has completed construction of a new shelter shed at Ravensbourne.

## Lake Broadwater

Site planning for a new campground at Lake Broadwater has been completed. Development work is to commence shortly. The Dalby B and S Ball is coming up in September and is to be held at Lake Broadwater, so book now.

## Boodua Environmental Park

Once the testing grounds and race circuit of Toowoomba, Boodua EP is now an attractive and quiet park just north west of Toowoomba. This park has been developed as a day-use area and is quite a popular place for weekend visitors.

## Southwood National Park

District office staff are preparing for a spin out to this Brigalow forested park, way out near Moonie. Finishing work to dozed firebreaks and repairs to the marsupial proof boundary fence is what we're up to. This should be a freezing trip.

## Main Range National Park

The first few months of 1986 have seen many changes at Main Range National Park. Dennis Dray and Joe Adair were transferred to Cooloola and Moreton Island respectively. Since then, John Carter has been given the task of Overseer in Charge and several new staff have started at the park.

John completed his studies at QAC in 1983 and commenced work with the Service at Main Range. John enjoys bushwalking on his days off.

Karen Hunter commenced at Main Range in mid April after spending three months at Green Mountains. An ex QAC student, Karen worked at QAC with Bob Beeton after graduating. Her skills acquired there will be put to good use as TIC at Main Range.

Stephen Crane was transferred from Moreton Island in January and is enjoying a change of scenery. Stephen finished QAC in 1981 and has spent four years in the Service, working at Mt Glorious and Moreton Island. Stephen has a keen interest in orchids and interpretation.

Mark Lythall started with the Service at Main Range in late April. Mark too was a QAC student who has had previous experience as an electrician.

A carpark has been constructed at the start of the walking tracks at Cunningham's Gap. This was a joint effort between the Service and the Main Roads Department, with plans to construct a toilet block there later in the year.

The Main Range and Killarney management areas management plan is well underway, being co-ordinated by Greg Oliver.

Staff of Main Range will once again participate in the Scenic Rim walk commencing at Mt Beau Brummell on August 16.

The team at Main Range, along with District Overseer Bob Laws and District Ranger Brett Porter, are looking forward to what will be a very interesting and action packed year.

The end of June saw the commencement of the latest CEP scheme at Main Range National Park. The group consists of 4 local girls - Heather Patterson, Kathleen O'Brien, Kelli Flint and Lynn Curtis who are employed for a total of 46 weeks. They all enjoy being outdoors and seem to be interested in their work. Vehicle barriers are at present being erected in the Main Range National Park campground and improvements are being made to accommodation facilities. Each has had the opportunity to do some track maintenance and have had insight into regular park maintenance duties. Campground re-developments are expected to be completed by the end of September if things continue to run to schedule.

NPA volunteers recently assisted Main Range staff in clearing a circuit trail at Spicer's Gap. About twenty volunteers worked on 19 and 20 July with rakehoes and machetees to clear the trail, which extends from the Spicer's Gap campground to the 4WD section of Spicer's Gap Road on the boundary of the park and State Forest, west of Governor's Chair. The trail passes via Mt Matheson to the escarpment south of Mt Mitchell and on through open forest past a timber junter to the road. From here the road through Spicer's Gap to the campground completes the circuit.

When fully completed and with appropriate signage, this trail will be the first defined walk of any significant distance for visitors to that section of Main Range.

Our thanks is extended to those NPA volunteers who worked with us on that occasion

by K. Hunter

#### **Nambour management area**

##### **Staff:**

The Nambour management area has three staff members, Gerry Cluver, Steve Johns and Peter Shirley. Gerri is the management area overseer, based in Gympie, Peter and I work from Kondalilla. Gerri has worked in Gympie for a number of years and during that time has devoted a lot of energy to wildlife problems in the area.

Peter joined National Parks in 1984, starting at Kondalilla. Later that year he transferred to the Glasshouse Mountains but was back at Kondalilla early in 1985. Peter's carpentry skills have been extremely valuable over the last two years completing a number of building projects in the Nambour area and assisting in other parks in the district.

I am the new comer to the area, having only started with National Parks last September, after resigning from Forestry. The position becoming vacant with the retirement of the late Lindsey Pringle.

#### **Current development**

At the moment we are carrying out final preparations for the start of a CEP scheme at Kondalilla, due to start on 7 July. The scheme will run for 25 weeks and employ 5 people. Construction will include building a rock retaining wall in the car park (to allow levelling of the area), new entrance tracks, water supply, workshop and picnic ground facilities.

#### **Management**

Kondalilla is the head quarters for the management of Nambour area. From our humble office (a former toilet block) we attempt to maintain eight NP's (10 as of July 1) and five environmental parks with more on the way.

Visitation is greatest at Kondalilla with approximately 250 000/year, Mapleton Falls would cater for approximately one quarter of this figure. None of the parks in the area cater for camping, which makes our job easier. Forestry are fulfilling this need in the Kenilworth area to the west of Kondalilla.

#### **Environment**

The Nambour management area takes in a wide variety of forest types from the rainforest and wet eucalypt forests of Conondale and Blackall Ranges to the open eucalypt forests and heath of Mooloolah River to the beaches of Peregrine and Curramundi.

The most famous inhabitants (?) of the Conondales and Blackall Ranges would have to be the platypus frog, **Rheobatrachus silus**. The species was first described in 1973 and has not been sighted since 1979.

### **History**

Kondalilla was gazetted as NP in 1945 as Bon Accord Waterfalls. The name changed several times up until 1951 when it was renamed Kondalilla National Park. Kondalilla means 'Rushing Water' in the local Aboriginal language.

Prior to the park being gazetted, the area from what is now the picnic area to the escarpment overlooking the falls was partially cleared for dairying.

by Steve Johns

### **Bundaberg District**

Cania Gorge Toilets - Completed with landscaped surrounds.

Auburn River National Park - Volunteer weekend 15-19 August. Thanks to all who turned up despite the eventual washout. Approximately half of the walking track has been upgraded. New B.B.Q's and tables installed.

Baldwin Swamp C.E.P. Scheme - Boardwalk is over halfway (total length 200 metres) New style of construction using sleepers has worked out far cheaper and is sturdier. Excavation work has been completed.

We wish Jim Randall all the best in his new job with Bundaberg City Council (Parks and Gardens). We're sorry to lose him, especially with his expertise in the Botanical Area.

### **Central Scenic Rim**

The Tamborine C.E.P. is still progressing well with Cedar Creek National Park and Witches Falls looking much better. O/s B. Flenady has written a plant list for the revegetation at Tamborine and it is proposed that the Tamborine order or part order will be the first to go into production in the new C.S.R. nursery.

Redevelopment of Nagaragoon Hut at Binna Burra is being planned and will be upgraded for short term accommodation.

Signage and track redevelopment is being given highest priority at Green Mountains.

A fully redeveloped sign plan was done by D. Batt and local staff in consultation with Peter and Vince O'Reilly.

A successful O/S meeting was held at Mt. Barney and future developments were discussed. Future track development is being planned but will require a staff increase in the area before any firm action can be taken.

Keith Sullivan and other Overseer's on the Scenic Rim have been heavily involved in the Scenic Rim management plan - co-ordinated by Greg Oliver. It is hoped that all the necessary data compilation and options etc. will be completed by October.

Thanks to all my staff for their work and effort in the last few months.

Jerry.



A bit of recognition from the public for the staff at Crows Nest and Ravensbourne

"Just a note to thank you for the care and attention paid to the park which made our recent stay there so enjoyable. We are aware that our fellow humans do not always care as we would want them to and we appreciate your efforts to make up the difference.

We also wish you the best for the coming year.

Paul Sutton and family."

"My husband and I and the children visited the Crows Nest Falls National Park over Easter - it was the first time I'd been to the Falls although I've lived in Toowoomba for 20 years.

We were delightfully surprised with the beauty and loveliness of the area. Its upkeep and appearance are a credit to you and your men. We plan to return to enjoy it again.

D. Rogerson."

### **PSB examinations**

As part of the Queensland Public Service Board's personnel evaluation programme, questionnaires similar to that reprinted here will become an integral part of the Service's examination procedure for public servant Rangers, Management Officers, and Administrative Staff.

Field personnel with aspirations for promotion should acquaint themselves with the format and type of question.

Such psychological evaluation of staff applying for promotion will help identify those people with the potential for higher responsibility - a necessity given the Service's expanding roles and increasing professionalism.

NAME: \_\_\_\_\_

TITLE: \_\_\_\_\_

LOCATION: \_\_\_\_\_

### **SITUATION ADAPTABILITY EVALUATION** **FOR TRAINING PERSONNEL**

This test has been designed to evaluate reaction of training personnel to various situations. The situations are based on actual case studies from a well known educational institution and represent a cross section of tests correlated to evaluate both reaction time to difficult situations as well as the soundness of each decision selected.

There are eight multiple choice questions. Read each question thoroughly.

Place an X by the answer you feel is most correctly justified by circumstances given.

Be prepared to justify your decision.

You have 4 minutes to complete this test.

1. You have prepared a proposal for the regional director of purchasing for your largest customer. The success of this presentation will mean increasing your sales to his company by 200%. In the middle of your proposal the customer leans over to look at your report and spits into your coffee. You:-

a) Tell him you prefer your coffee black.

b) Ask to have him checked for any communicable diseases.

c) Take a leak in his 'out' basket.

2. You are having lunch with a prospective customer talking about what could be your biggest sale of the year. During the conversation a blonde walks into the restaurant and she is so stunning you draw your companion's attention to her and give a vivid description and what you would do if you had her alone in your motel. She walks over to your table and introduces herself as your client's daughter. Your next move is to:-

a) Ask for her hand in marriage.

b) Pretend you've forgotten how to speak English.

c) Repeat the conversation to the daughter and just hope for the best.

3. You are making a sales presentation to a group of corporate executives in the plushiest office you've ever seen. The hot enchilada casserole and egg salad sandwich you had for lunch react, creating a severe pressure. Your sphincter loses its control and you breakwind in a most convincing manner causing three water tumblers to shatter and a secretary to pass out. Your next move is to:-

a) Offer to come back next week when the smell has gone away.

b) Point out their chief executive and accuse him of the act.

c) Challenge anyone in the room to do better.

4. You are at a business lunch when you are suddenly overcome with an uncontrollable desire to pick your nose. Remembering that this is definitely a No-No, you:-

a) Pretend to wave to someone across the room, and with one fluid motion bury your forefinger in your nostril right up to the fourth joint.

b) Get everyone drunk and organise a nose picking contest with a prize to the one who makes his nose bleed first.

c) Drop your napkin on the floor and when you bend over to pick it up, blow your nose on your sock.

5. You've just spent the evening with a supplier who invited you to an all night drinking party. You get home just in time to go to work. You stagger to the men's room and spend the next half hour vomiting. As you're washing up at the sink, the sales training director walks up, blows his cigar smoke in your face, and asks you to join him for drinks after work. You:-

a) Look him straight in the eye and launch one last convulsion at the front of his Fletcher Jones suit.

b) Nail him right in the groin, banking on the fact he'll never recognise your green face.

c) Grasp his hand and pump it until he wets his pants.

6. You are at a dinner with a customer and his wife, who looks like the regional runner-up of the Phyllis Diller lookalike contest. Halfway through dinner you feel a hand on your lap. Being resourceful, you:-

a) Accidentally spill hot coffee in your lap.

b) Slip a note to the waiter to have your customer paged and see if the hand goes away when he does.

c) Excuse yourself and go to the men's room. If he follows, don't come out until your shorts rot.

7. You're on your way in to see your best customer when your zipper breaks and you discover that you forgot to put your shorts on that morning. You decide to:-

a) Call on the customer's secretary instead.

b) Explain that you were just trolling for queers.

c) Buy a baggy raincoat and head for the nearest playground.

8. You've returned from a trip to North Bondi, Sydney, in January and tell your boss that nobody but whores and football players live there. He mentions that his wife is from Green Bay. You:-

a) Ask what position she played.

b) Ask if she's still working the streets.

c) Pretend you're suffering from amnesia and don't remember your name.

# Ratbag

Assistance from Prison Farm labour  
Numinbah Prison Farm

Project name: The Great Bank Robbery

Supervisor: Mike (Lefty) Hall and  
Paul (Scarface) Grimshaw

Objectives: To get as rich as possible  
as quick as possible. To  
enjoy the fruits of  
retirement while still able  
to.

Work Involved: Casing the joint. Using  
prison farm labour  
expertise in cracking  
the safe. Once job is  
completed no further  
work is required for the  
rest of our lives.

Are funds available: No, but they will  
be after  
completion of the  
project.

Number of prisoners: 1 - getaway car  
driver

1 - master safe  
cracker

Transport: Getaway car.

Can you provide other projects when this  
is completed:

Yes but only by mail through a  
Swiss bank.

by M. Hall

