



# Ringtail



QUEENSLAND  
NATIONAL PARKS  
AND WILDLIFE  
SERVICE

Summer issue

Quarterly newspaper of the Queensland National Parks and Wildlife Service

December 1985

## Lakeside boardwalk taking shape



## Projects help parks, people

**Thirteen projects costing \$1 million will give temporary jobs to 58 people within the Queensland National Parks and Wildlife Service in the next seven months.**

Taxpayers footing the bill will have opportunities to enjoy improved visitor facilities in national parks from Springbrook to Cairns.

The projects bring the monetary value of Service tasks assigned under the Community Employment Program since 1984 to \$3.4 million.

Of inestimable worth is the experience, training and feeling of worthiness regained by more than 100 participants to re-enter the normal workforce.

CEP workers are chosen from long-term unemployed or disadvantaged groups for short-term work to learn skills.

By the end of this month, 20 Service projects costing \$1.4 million will have been completed.

The \$1 million Tallebudgera Greenspace project is due to end next June.

For the 13 new projects, the Service is committed to funding a \$314,000 share, with the Commonwealth Government share, with the Commonwealth Government contributing the bulk.

The Service share is complementary to its extensive works and maintenance

budget, and is seen as value for money in labour intensive jobs which might not otherwise be undertaken in the short term.

All of the new projects will be started by the end of this month with staff requirements being directed through local Commonwealth Employment Service offices.

The largest task will be at Springbrook in the Gold Coast hinterland where 10 people will be taken on to work for up to 46 weeks.

A total of \$300,000 will be spent redeveloping visitor facilities such as picnic grounds, barbecues, toilets and tracks in the popular parks of the area.

Other projects in the Southern Region include:

Noosa National Park, four people, 26 weeks, \$61,795 to upgrade popular picnic ground facilities and nearby tracks; Southern Cooloola, six people, 26 weeks, \$112,856 developing picnic and camping grounds and walking tracks near the Noosa River; Fraser Island, 10 people for 30 weeks, \$179,220 for a rubbish clean-up, developing park facilities and rehabilitation of eroded and damaged areas; Peregian Environmental Park, four people for 17 weeks, \$43,546 for

boardwalks and other access within the park, and parking; Ravensbourne National Park, three people, 20 weeks, \$34,108, upgrading of visitor facilities including 2km of walking track.

Five other people will be given jobs involving vegetation and fire mapping, fauna holding pens, and erecting 4km of fencing for kangaroo research.

In the Far Northern Region, four people will work for 26 weeks in Barron Gorge National Park improving visitor facilities, walking tracks and lookouts. The cost will be \$51,383.

In the Northern Region, five people will be engaged for 26 weeks to improve facilities for the growing number of day visitors and campers at Alligator Creek in Bowling Green Bay/Mt Elliot National Park south of Townsville.

In the Central Region, \$55,533 will be spent employing four people for 24 weeks extending facilities begun in a similar project in the Broken River area of Eungella National Park, west of Mackay.

CEP projects have been completed at Lake Eacham, Mossman Gorge in Daintree National Park, Pallarenda, Mt Spec, Eungella, Mt Archer, Elanda, Cooloola, Woodgate, Mon Repos, Maiala, Lamington and Main Range plus several Q.NPWS offices.

Extensive boardwalk and lake, part of major redevelopment at Fleay's Fauna Centre, West Burleigh, which is more than half complete. A \$1 million CEP project here is due to finish in the middle of 1986. Plantings for five habitats, general revegetation and special fencing are being undertaken at present. About 40 people are on the job at any time. The project is part of the Service's Tallebudgera Greenspace concept for conservation of the Tallebudgera Creek estuary.

## Minister's message

1985 has been a very exciting year for national parks in Queensland.

During the past 12 months, the national parks estate has been expanded and there has been an on-going program of providing more facilities for campers and day visitors to the parks.

In addition, educational programs for children have been introduced, making a visit to a national park very much a family outing.

As a result of the greater interest in our parks, the National Parks and Wildlife Service is expecting a busy Christmas-New Year holiday period.

There is always plenty to see and do in the parks, and I urge everyone to enjoy the surroundings.

But I would also urge them to take care and consider the environment so that it can be appreciated by others for many years to come.

I wish all visitors to our national parks a safe holiday, a Holy Christmas and a happy and prosperous new year.

Peter McKechnie  
Minister for Tourism,  
National Parks, Sport  
and The Arts

**To foster harmony between humanity and the environment, thereby facilitating our well-being, and safeguarding the integrity of nature.**

**Q.NPWS goal**



## Wet feet for Bush Beat



Wet feet for a QTQ Channel 9 TV crew on the shores of Lake Cootharaba, Cooloola National Park, recording a scene for the wetlands segments of the upcoming series Bush Beat.

The series of 25 half hour episodes is the first in which the Queensland National Parks and Wildlife Service has participated as a co-producer.

Recording which started back in June

aims to give 8-14 year olds an insight into the natural workings of five of Australia's major land systems — desert, bush, rainforest, wetlands and reef.

All of the in-field material has now been gathered, not without some close shaves, long nights and some lucky breaks.

The first studio segment of the desert

episodes was recorded this month.

(Imagine red kangaroos, dingos, goannas, brown snakes and a host of parrots waiting patiently in a TV studio for their stars to rise!)

The remaining segments are due to be completed next month.

The Nine Network has not set a showing date but watch in the first half of 1986.

## Service roo book praised

Launch of the book *The Kangaroo Keepers* was the highlight of several official occasions for the National Parks Minister, Mr McKechnie, recently.

The University of Queensland Press book, edited by Service Assistant Director (Special Projects) Dr Hugh Lavery, examines a range of topics concerning kangaroos from the Service's view.

The book has been praised for its balanced views about often controversial issues and the Service's record in management and research.

Four posters of Ruth Berry's drawings for the book were also launched. Poster sets (\$9) and the book (\$35) are available from major Service offices.

The Minister also officiated at the world premiere of the film *Messengers of the Gods*, a feature nature documentary film about cranes around the world, initiated by the Service.

The Nine Network has bought the film for Australian viewing.

The Minister with the Primary Industries Minister, Mr Turner, launched *Agriculture and Conservation in Inland Queensland*, produced by the Wildlife Preservation Society of Queensland as a record of its significant 1983 Dalby conference.

Mr McKechnie presented the Service's recommendations on the nature conservation aspects of the new Toowoomba Showground to the Royal Agricultural Society president, Mr Rod Stirling.

## By the tail ...

Make a note of the following Queensland school holiday dates for 1986 to help make (or avoid) bookings for national park campsites: Australia Day weekend 25-27 January, Easter break 28 March 6 April, Anzac Day weekend 25-27 April, Labour Day weekend 3-5 May, Queen's Birthday weekend 7-9 June, mid-year holiday 14-29 June, mid-semester holiday 20 September 5-October, Christmas holidays 13 December 26 January.

John Morrison, the fine artist illustrator for Grahame Walsh's Aboriginal legend books for children, is being recognized this month by the Queensland Art Gallery.

His art for Grahame's latest book, *Didane the Koala*, has been mounted and is on special display at the Gallery until 5 January.

This is the first time that the work of a Queensland artist for publication has been shown at the Gallery while the book is available for sale (in bookshops and at the Service's Head Office and regional centres.)

The Service hopes the art can also be displayed in provincial centres.

Wildlife insert in this issue might clarify the term fauna for one Brisbane resident. He phoned the aviculture permits section to insist his mother was not keeping fauna; in fact she had no trees in her yard at all.

Twelve island national parks between the South Barnards and Lizard off the north Queensland coast are open for camping. Numbers and length of stays are restricted, and of course all visitors must be self-sufficient. Direct enquiries to Cairns.

Park rangers are not available to mind children while parents undertake other activities. This assurance was given to a caller to the Service recently.

Faces are red for the wrong identification of the page one picture in the last Ringtail. The flower was that of *Barringtonia acutangula*.

The Queensland Herbarium gives these distinguishing botanical features: *Barringtonia* belongs to the family *Lecythidaceae* which one reference concedes 'is related to *Myrtaceae*, particularly as regards flower morphology, and some botanists have included these plants with the myrtles in their classification.'

Individual flowers of *Barringtonia acutangula* are produced on stalks; those of *Callistemon* are sessile (no stalks).

Filaments of the stamens of *Barringtonia* are fixed at the base to form a tube 1-4.5mm long, whereas in *Callistemon* the filaments are either free or (in the case of *C. viminalis*) very short united into a ring (not tube).

*Callistemon* fruit are very small while *Barringtonia acutangula* has a large angular fruit up to 6cm long.

The Service advises that posters and books as offered in the last Ringtail are not available through charge cards.

Two large catamaran style launches are bringing the Great Barrier Reef closer to the coast for day visitors.

The Lady Musgrave leaves the Burnett Heads, Bundaberg, boat harbour regularly for trip to Lady Musgrave Island.

A similar vessel has started regular trips from Yeppoon to North West Island.

Does anyone know how to rid a house of geckoes? Frustrated Brisbane woman told staff she was tired of vacuuming geckoes off the ceiling!

The Northern Territory Conservation Commission, Alice Springs, is the place where teachers should address their enquiries about copies of new posters, coastal plains and tropical woodlands, published recently.

Heat exhaustion is not one of the many activities of the Go Bush Summer program of Brisbane Forest Park. Long hikes have been dropped for this time of year. Get details in the latest Bush Telegraph then phone BFP to book on the relatively new number of 300 4855.

New walking track under way up Mt Greville, one of the Moogerah peaks. Track up Mt Edwards nearby is being rebuilt. A track to the Mt French lookout will be suitable soon for use by disabled visitors.

Volunteers, Honorary Protectors and Natural History Association members who assist Q.NPWS in many ways are to be organized on a regional basis. Day to day contact and projects will come through regional staff at various levels for improved liaison and performance, while co-ordination, policy and guidelines will still come from Head Office.

Copies of the Service's 1986 single sheet calendar will be available from major offices late this month. It features scenes depicting the diversity across southern Queensland from desert to reef taken by Service photographer Paul Candlin. A more extensive publication goes to people and organizations who have assisted the Service directly and is not available to the public.

Details have been announced of the granting of \$275,000 by the Service to 12 local authorities for the upgrading of access roads to national parks this financial year. The largest amount is \$100,000 to Bauhinia Shire towards Carnarvon Gorge access.

## New reef areas gazetted

Seven reef appreciation areas have come into operation in the Great Barrier Reef Marine Park Capricornia Section this month.

The areas are defined sections of Lady Musgrave reef, Heron reef, Wistari reef, Lady Elliot reef, Masthead reef, North West reef (two parts) and Tyron reef.

Within the next year they will be defined by special markers.

They have been determined within the Marine Park zones for their high diversity of corals, fish and other marine organisms which are in areas readily accessible to camping islands and popular anchorages, and not in areas subject to strong tidal currents.

The objective of a reef appreciation area is to provide a small area on heavily used reefs in which the public may observe and appreciate marine life relatively undisturbed.

Thus fishing and collecting are not allowed in these areas.



WORLD EXPO 88 BRISBANE  
April 30—October 30, 1988



# New outlook for Fraser

A new era in recreation in Queensland starts on 1 February when Fraser Island Recreation Board responsibilities take effect.

In return for fees, visitors will be provided with facilities and services, and Fraser Island will be managed in ways compatible with its distinctive environment.

While regulations and bylaws will apply, the board's policy will be to educate visitors and to seek their co-operation for the opportunity of enjoyable stays free from inconvenience by a few irresponsibles.

Fees to be paid include: \$10 a vehicle for each visit, or an \$80 a vehicle a year permit renewable each 1 February, \$5 a night to a maximum \$25 for a seven-day week for camping out, and \$1 a day for each visitor on a guided tour plus \$1 a night if the person camps out in the recreation area.

An office for fee paying and information will open at Rainbow Beach. On the island, Dundubara, Central Station and Eurong Centres will be available.

Fees may also be paid at Brisbane, Maryborough and Gympie offices of the Queensland National Parks and Wildlife Service and the Department of Forestry, the two government organizations carrying out the management tasks on Fraser Island.

The National Parks Minister, Mr McKechnie, and the Forestry Minister, Mr Glasson this month initiated a major litter cleanup of island beaches and roadsides as part of Community Employment Program involving 16 people to cost \$280,000.

The development of dumps at Waddy Point, Happy Valley, Eurong and Dundubara are among extensive plans for visitor safety and convenience.

Assistance will be given to Widgee Shire to develop a dump near

Rainbow Beach for those who help keep Fraser clean by bringing their rubbish back to the mainland.

Seven more staff are being appointed to facilitate Fraser Island operations.

Emergency centres are proposed for Waddy Point, Dundubara, Eurong and Rainbow Beach, and a visitor requiring medical help need only call on a ranger who will have access to a new extensive radio network.

Priority is being given to building a corduroy (linked planks) road to end the dangers of driving on the badly-eroded sand track in the Indian Head-Waddy Point area and at Yidney Rocks and Poyungan.

Showers and toilets will be provided at a new campground to be built at the popular fishing area of Waddy Point, and more campsites will be developed at the Dundubara Great Sandy National Park centre to allow for rotation of sites.

An extensive revegetation program will attempt to change the wind-blown areas around Indian Head and Waddy Point using species native to the area. Major upgrading is proposed for the walking trail from Dilli Village.

Brochures and a special map should be available by 1 February to assist new and old visitors.

The campsite booking system for national parks state-wide will continue to apply to the Dundubara and Wathumba campsites.

Users seeking all details of the Fraser Island Public Access Act and regulations should obtain copies at the Government Printing Office, Vulture Street, Woolloongabba.

## Read the book first

Sands of Time is the title of the book written when the film of the same name was being made on Fraser Island.

Felicity Baverstock's text tends to be a little scholarly but this

complements previous books about the island.

Densy Clyne's pictures reflect Fraser's natural diversity.

Read the book (\$19.95 from ABC shops) then see the film, as yet unscheduled for 1986 by ABC TV.

# End of Moreton road



Courier-Mail photo

End of the road for yet another vehicle found abandoned on Moreton Island, flattened and dumped under the supervision of Service overseer Cec Hais.

Mt Tempest National Park staff had the assistance of 17 men from 3/4 Cavalry Regiment, Enoggera, and their equipment for 10 days to tackle more major cleanup tasks on the island.

The Army considered the project as end-of-year adventure training trying something different after extensive field training during the year.

The Service Director, Dr Graham Saunders, said staff were most grateful for the help.

State Cabinet recently

decided more than 91 percent of Moreton Island would be national park.

The addition of a further 7940ha of the island was approved to bring Mt Tempest National Park to 17 300ha.

The park's exact boundaries had not been gazetted at press time.

# St Helena changes evident

St Helena Island, the state's major historical national park, is presenting a new face to its growing number of visitors.

Its penal ruins are unchanged but the surrounds have altered markedly since the Service took absolute control of the Moreton Bay Island earlier this year.

Two staff, aided by prisoners from Brisbane Jail on regular assignment, have removed rubbish accumulated over years.

They have made preparations for major work to cost \$760,000 under a Bicentennial grant to start soon.

The National Parks Minister, Mr McKechnie, who visited the

island recently said St Helena was ready to become a major tourist attraction in the Brisbane area.

Trees had been planted, toilets built and work on a picnic ground had started.

Service staff were available at certain times to conduct guided tours of the island and ruins, in addition to commercially operated tours.

Three staff have been seconded to the Service from the Department of Mapping and Surveying for six months to locate and map accurately all parts of the area related to

the penal colony from 1867 to 1932.

The Harbours and Marine Department is to call tenders for a new jetty to cater for larger boats to visit the island.

Consultants are working on guidelines for reconstruction including the old causeway and the old tramway, as well as information facilities and education programs.

Mr McKechnie said that as part of bicentennial celebrations, living history programs were proposed with a special St Helena National Park celebration on Queensland Day, 6 June.

## NORTHERN PERMANENT BUILDING SOCIETY

National Australia Bank

CAIRNS - 45 ADELL STREET QLD

National Commonwealth Banking Corporation of Australia Limited

028486

PAY THE PEOPLE OF NORTH QUEENSLAND

THE SUM OF FOUR HUNDRED & SEVENTY MILLION DOLLARS

For and on behalf of NORTHERN PERMANENT BUILDING SOCIETY

STAMP DUTY PAID

NOT NEGOTIABLE BANK AC PAYEE ONLY

DATE

31/12/85

AMOUNT

\$470,000,000

028486 084 58 21 1574 834 5

This cheque represents the most munificent gesture towards Service operations.

Fortunately perhaps for the Northern Permanent Building Society, Cairns, there is no such account in reality for the cheque to be presented.

Instead, the cheque is a graphic reminder of the value of tourism to north Queensland.

The Service sought assistance when compiling a section on tourism for one of the displays in the new Cardwell Information Centre.

Of course, the original will be well glued when this part goes on show early in 1986.

At the rate of tourism growth, the cheque may have to be replaced with one of an even higher value by this time next year.

## Now Cardwell

The Service's new Cardwell information centre is open to the public following the building's completion recently

Temporary displays have been fitted pending the installation of permanent displays early in 1985.

The centre is on the Bruce Highway, Cardwell, adjacent to the jetty.

Preliminary results of a survey in the area confirm suspicions that visitors generally are poorly informed.

The survey was conducted by Dr Philip Pearce, Gianna Moscardo and third-year students of James Cook University with Service interpretive officer Marc Hockings.

A report states the visitors have simple plans involving going to Cairns and nearby areas.

They have little information on national parks or other activities available between Cardwell and Cairns.

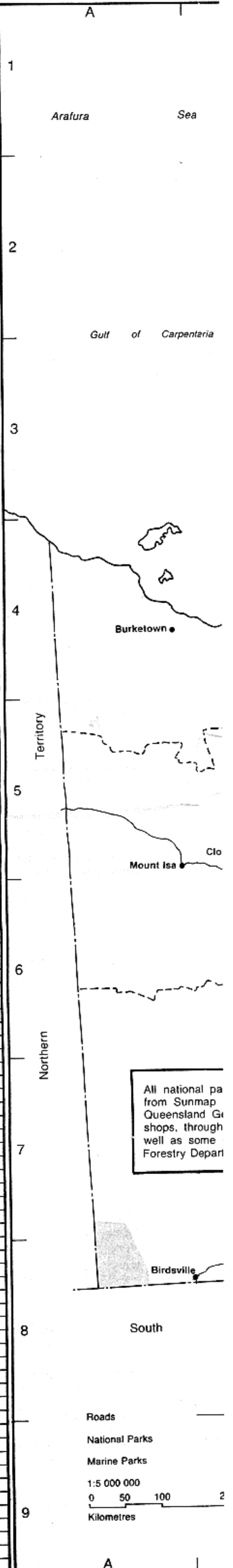
The influence of the Cardwell centre as a major source of information will be tested in a follow-up survey, probably in 1987.



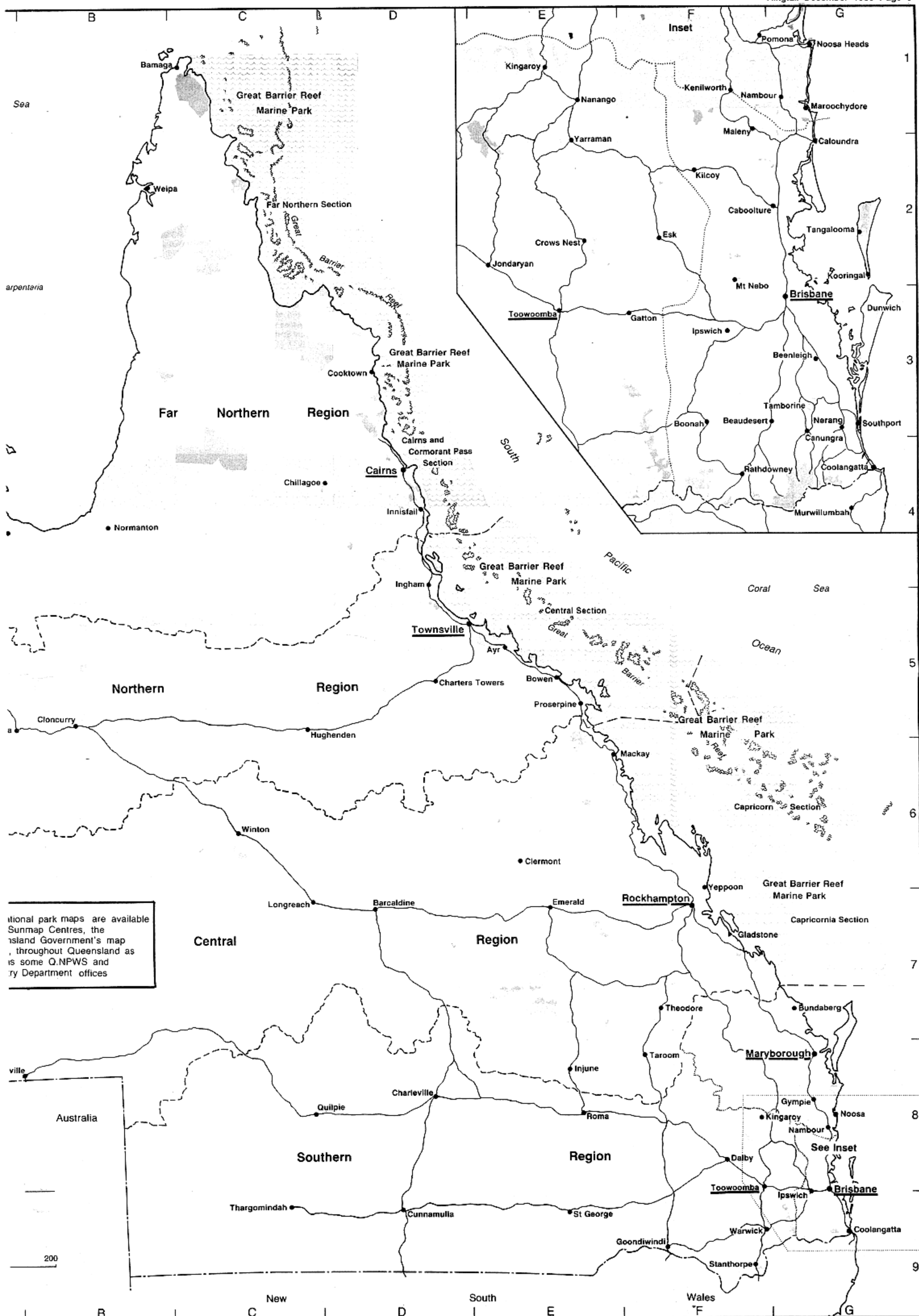
# Popular parks

	Map index	Published map	Brochure	Day visitor facilities	Water available	Access category	Graded walking track	Ranger staff	Provisions, fuel etc	Accommodation nearby	Camping vehicle/boat with facilities	Campsite without facilities	Bushwalking camping	Booking, information	Notes
<b>Southern Region</b>															
Brisbane Forest Pk (national parks)	F2	●	●	●	●	C	●	●	●	●	●	●	●	●	Brisbane Forest Pk BFP fee Manarina campsite
Moreton Island (Mt Tempest)	G2	●	●	●	●	B U	●	●	●	●	●	●	●	●	Moreton Island Moggill
Blue Lake (Stradbroke Island)	G3	●	●	●	●	C	●	●	●	●	●	●	●	●	Tamborine
Tamborine Mountain	G3	●	●	●	●	C	●	●	●	●	●	●	●	●	Moggill
St Helena Island	G2	●	●	●	●	B	●	●	●	●	●	●	●	●	Historic area - Restricted access
Burleigh Head	G4	●	●	●	●	C	●	●	●	●	●	●	●	●	Burleigh
Springbrook	G4	●	●	●	●	C	●	●	●	●	●	●	●	●	Springbrook Small camp area Purlingbrook Falls
Natural Arch	G4	●	●	●	●	C	●	●	●	●	●	●	●	●	Natural Arch
Lamington Binna Burra	G4	●	●	●	●	C	●	●	●	●	●	●	●	●	Binna Burra
Green Mountains	G4	●	●	●	●	C	●	●	●	●	●	●	●	●	Green Mountains
Other areas	G4	●	●	●	●	C	●	●	●	●	●	●	●	●	Green Mountains Queensland Recreation Camp Christmas C
Pine Ridge EP	G3	●	●	●	●	C	●	●	●	●	●	●	●	●	Burleigh
Mt Barney	F4	●	●	●	●	W	●	●	●	●	●	●	●	●	Boonah
Mt French	F3	●	●	●	●	C	●	●	●	●	●	●	●	●	Boonah
Main Range Cunningham's Gap	F3	●	●	●	●	C	●	●	●	●	●	●	●	●	Main Range
Queen Mary Falls	F4	●	●	●	●	C	●	●	●	●	●	●	●	●	Main Range
Girraween	F9	●	●	●	●	C	●	●	●	●	●	●	●	●	Girraween
Sundown	F9	●	●	●	●	C U	●	●	●	●	●	●	●	●	Sundown Rough access to Burrows Waterhole
Lake Broadwater EP	F8	●	●	●	●	C	●	●	●	●	●	●	●	●	Lake Broadwater
Bunya Mountains	E1	●	●	●	●	C	●	●	●	●	●	●	●	●	Bunya Mountains Not advisable for caravans
Crows Nest Falls	E2	●	●	●	●	C	●	●	●	●	●	●	●	●	Crows Nest
Ravensbourne	E2	●	●	●	●	C	●	●	●	●	●	●	●	●	Crows Nest
Conondale	F1	●	●	●	●	C U	●	●	●	●	●	●	●	●	Moggill Primitive area. State Forest camp near
Glass House Mountains	G2	●	●	●	●	C	●	●	●	●	●	●	●	●	Beewah
Kondalilla	F1	●	●	●	●	C	●	●	●	●	●	●	●	●	Gympie
Mapleton Falls	F1	●	●	●	●	C	●	●	●	●	●	●	●	●	Gympie
Noosa	G1	●	●	●	●	C	●	●	●	●	●	●	●	●	Gympie
Cooloolia Kinaba (Harry Springs)	G1	●	●	●	●	B U	●	●	●	●	●	●	●	●	Gympie Toilets, boardwalk — Kinaba
Freshwater	G8	●	●	●	●	U	●	●	●	●	●	●	●	●	Maryborough
Double Island Pt	G8	●	●	●	●	U	●	●	●	●	●	●	●	●	Maryborough Access via beach
Great Sandy (Fraser Island)	G7	●	●	●	●	B U	●	●	●	●	●	●	●	●	Maryborough Restricted camping on eastern beach
Woodgate	G7	●	●	●	●	U	●	●	●	●	●	●	●	●	Woodgate 4WD recommended
Mon Repos EP	G7	●	●	●	●	C	●	●	●	●	●	●	●	●	Maryborough Turtles nest Nov-Jan hatch Jan-Mar
Auburn River	F7	●	●	●	●	C	●	●	●	●	●	●	●	●	Maryborough
Cania Gorge	F7	●	●	●	●	C	●	●	●	●	●	●	●	●	Maryborough
<b>Central Region</b>															
Keppel Group	F7	●	●	●	●	B	●	●	●	●	●	●	●	●	Yeppoon Campsites Humpy Is, North Keppel
Capricornia Heron Is	G7	●	●	●	●	B F	●	●	●	●	●	●	●	●	Rockhampton/ Gladstone No camping
North-West Island	G7	●	●	●	●	B	●	●	●	●	●	●	●	●	"
Lady Musgrave	G7	●	●	●	●	B	●	●	●	●	●	●	●	●	"
Tryon Is	G7	●	●	●	●	B	●	●	●	●	●	●	●	●	"
Masthead Is	G7	●	●	●	●	B	●	●	●	●	●	●	●	●	"
Capricorn coast	F7	●	●	●	●	C	●	●	●	●	●	●	●	●	Yeppoon
Eurimbula	F7	●	●	●	●	U	●	●	●	●	●	●	●	●	Gladstone
Blackdown Tableland	E7	●	●	●	●	C	●	●	●	●	●	●	●	●	Blackdown Tableland Road unsuitable for vans
Isla Gorge	F7	●	●	●	●	C	●	●	●	●	●	●	●	●	Taroom
Robinson Gorge	E7	●	●	●	●	U	●	●	●	●	●	●	●	●	Taroom Last 3km 4WD only
Carnarvon Carnarvon Gorge	E7	●	●	●	●	C	●	●	●	●	●	●	●	●	Carnarvon Gorge Rain closes road
Mt Moffatt	E7	●	●	●	●	C	●	●	●	●	●	●	●	●	Mt Moffatt Carry extra fuel, water
Salvator Rosa	E7	●	●	●	●	C	●	●	●	●	●	●	●	●	Springure Carry extra fuel, water
Ka Ka Mundi	E7	●	●	●	●	C U	●	●	●	●	●	●	●	●	Springure Carry extra fuel, water
Simpson Desert	A8	●	●	●	●	U	●	●	●	●	●	●	●	●	Rockhampton Remote area. Contact Q.NPWS first
Lark Quarry EP	C6	●	●	●	●	C	●	●	●	●	●	●	●	●	Rockhampton
Cape Hillsborough	E6	●	●	●	●	C	●	●	●	●	●	●	●	●	Mackay Campsite Smalleys Beach no water
Eungella Broken River	E6	●	●	●	●	C	●	●	●	●	●	●	●	●	Eungella
Finch Hatton Gorge	E6	●	●	●	●	U W	●	●	●	●	●	●	●	●	Eungella
Cumberland Gp Brampton Is	F5	●	●	●	●	B	●	●	●	●	●	●	●	●	Mackay
Other islands	F5	●	●	●	●	B	●	●	●	●	●	●	●	●	Mackay Campsite Goldsmith Is
Cape Palmerston	F6	●	●	●	●	U	●	●	●	●	●	●	●	●	Mackay Carry extra fuel, water
<b>Northern Region</b>															
Whitsunday general	E5	●	●	●	●	B	●	●	●	●	●	●	●	●	Conway
Conway	E5	●	●	●	●	C	●	●	●	●	●	●	●	●	Conway Developed camp Shute Harbour 4 day limit
Molle Group	E5	●	●	●	●	B	●	●	●	●	●	●	●	●	Conway Developed camp North Molle Is
Henning Is	E5	●	●	●	●	B	●	●	●	●	●	●	●	●	Conway
Hook Island	E5	●	●	●	●	B	●	●	●	●	●	●	●	●	Conway
Repulse Group	E5	●	●	●	●	B	●	●	●	●	●	●	●	●	Conway
Whitsunday Island	E5	●	●	●	●	B	●	●	●	●	●	●	●	●	Conway
Thomas Is	E5	●	●	●	●	B	●	●	●	●	●	●	●	●	Conway
Gloucester Saddleback	E5	●	●	●	●	B	●	●	●	●	●	●	●	●	Conway Several islands
Bowling Green Bay general	E5	●	●	●	●	B C	●	●	●	●	●	●	●	●	Townsville
Mt Elliot/Alligator Creek	E5	●	●	●	●	C	●	●	●	●	●	●	●	●	Townsville
Magnetic Island	E5	●	●	●	●	B	●	●	●	●	●	●	●	●	Townsville
Townsville Town Common EP	E5	●	●	●	●	C	●	●	●	●	●	●	●	●	Townsville No camping
Mt Spec, Jourama Falls	D5	●	●	●	●	C	●	●	●	●	●	●	●	●	Paluma Camping Big Crystal Creek only
Orpheus Is	D5	●	●	●	●	B	●	●	●	●	●	●	●	●	Ingham
Wallaman Falls	D4	●	●	●	●	C	●	●	●	●	●	●	●	●	Ingham
Porcupine Gorge	C5	●	●	●	●	C	●	●	●	●	●	●	●	●	Townsville
Hinchinbrook	D4	●	●	●	●	B	●	●	●	●	●	●	●	●	Cardwell, Ingham
Edmund Kennedy	D4	●	●	●	●	C	●	●	●	●	●	●	●	●	Edmund Kennedy
Dunk Island	D4	●	●	●	●	B F	●	●	●	●	●	●	●	●	Cardwell Camping school holidays only
<b>Far Northern Region</b>															
Bellenden Ker general	D4	●	●	●	●	W	●	●	●	●	●	●	●	●	Josephine Falls
Josephine Falls	D4	●	●	●	●	C	●	●	●	●	●	●	●	●	Josephine Falls
Fishery Falls	D4	●	●	●	●	C	●	●	●	●	●	●	●	●	Cairns
Eubenangee Swamp	D4	●	●	●	●	C	●	●	●	●	●	●	●	●	Josephine Falls
Barron Gorge	D4	●	●	●	●	W	●	●	●	●	●	●	●	●	Cairns Best seen from Kuranda train
Michaelmas Cay	D4	●	●	●	●	B	●	●	●	●	●	●	●	●	Cairns Nesting area. Access to beach only
Palmerston	D4	●	●	●	●	C	●	●	●	●	●	●	●	●	Palmerston
Davies Creek	D4	●	●	●	●	C	●	●	●	●	●	●	●	●	Cairns
Daintree Mossman Gorge	D3	●	●	●	●	C	●	●	●	●	●	●	●	●	Cairns
Other areas	D3	●	●	●	●	W	●	●	●	●	●	●	●	●	Cairns
Cape Tribulation Noah's Beach	D3	●	●	●	●	C	●	●	●	●	●	●	●	●	Cape Tribulation Phone Cairns
Cape area	D3	●	●	●	●	C	●	●	●	●	●	●	●	●	"
Other areas	D3	●	●	●	●	W B	●	●	●	●	●	●	●	●	"
Cedar Bay	D3	●	●	●	●	W B	●	●	●	●	●	●	●	●	Cairns No camping
Green Island	D4	●	●	●	●	B	●	●	●	●	●	●	●	●	Cairns
Millstream Falls	D4	●	●	●	●	C	●	●	●	●	●	●	●	●	Lake Eacham
Mt Hypipamee	D4	●	●	●	●	C	●	●	●	●	●	●	●	●	Lake Eacham
Lake Barrine	D4	●	●	●	●	C	●	●	●	●	●	●	●	●	Lake Eacham
Lake Eacham	D4	●	●	●	●	C	●	●	●	●	●	●	●	●	Lake Eacham
Chillagoe-Mungana Caves	D4	●	●	●	●	C	●	●	●	●	●	●	●	●	Chillagoe Tour times 9am and 1.30pm
Lizard Island Group	D3	●	●	●	●	B F	●	●	●	●	●	●	●	●	Cairns Camping limit one week
Lakefield	C3	●	●	●	●	C U	●	●	●	●	●	●	●	●	Lakefield Carry extra fuel, water
Iron Range	C2	●	●	●	●	U	●	●	●	●	●	●	●	●	Cairns Carry extra fuel, water
Archer Bend Rokeby	C2	●	●	●	●	U	●	●	●	●	●	●	●	●	Cairns Carry extra fuel, water
Jardine River	C1	●	●	●	●	U	●	●	●	●	●	●	●	●	Cairns Carry extra fuel, water
Lawn Hill	A5	●	●	●	●	U	●	●	●	●	●	●	●	●	Lawn Hill Carry extra fuel. Phone Lake Eacham

C Conventional drive vehicle  
U Unsealed road  
B Boat  
F Flight  
W Walking  
P Private



All national pa  
from Sunmap  
Queensland G  
shops, through  
well as some  
Forestry Depart







## QUEENSLAND NATIONAL PARKS AND WILDLIFE SERVICE

Minister for Tourism, National  
Parks, Sport and The Arts  
6th floor  
Comalco House  
cnr George and Ann Sts  
Brisbane  
PO Box 155  
North Quay, Qld 4000  
(07) 227 4831

Queensland National Parks  
and Wildlife Service  
5th, 6th and 7th floors  
MLC Centre  
239 George Street, Brisbane  
PO Box 190  
North Quay, Qld 4000  
(07) 227 4111

**Southern Region**  
Southern Regional Centre  
55 Priors Pocket Road  
Moggill  
PO Box 42  
Kenmore, Qld 4069  
(07) 202 0200  
202 0232 (wildlife)  
202 0212 (parks)

Moreton Sub-Regional Office  
c/- Regional Superintendent  
see Regional Centre

Eastern and Central Scenic  
Rim District Office  
c/- District Ranger  
see Regional Centre

Tambrine Mountain  
Knoll Road  
North Tambrine, Qld 4272  
(075) 45 1171

Burleigh Head  
6 Peggs Road  
Burleigh Heads, Qld 4220  
(075) 35 3183

Fleay's Fauna Centre  
Kabool Street  
West Burleigh, Qld 4219  
(075) 56 2194

Springbrook  
via Mudgeeraba, Qld 4215  
(075) 33 5147

Natural Arch  
via Nerang, Qld 4211  
(075) 33 6156

Lamington  
Binna Burra  
Beechmont  
via Nerang, Qld 4211  
(075) 33 3584  
Green Mountains  
via Canungra, Qld 4275  
(075) 45 1734

Boonah  
Mt French Road  
MS 161  
Boonah, Qld 4310  
(075) 63 1579 (after 6pm)  
Glass House Mountains  
Office  
Rays Road  
Beerwah, Qld 4519  
(071) 94 6630 (4.30-5pm)

Mt Glorious  
c/- Post Office  
Mt Nebo, Qld, 4520  
(07) 289 0200 (3.30-4pm)

Moreton Bay District Centre  
c/- District Ranger  
41 Byron Street  
Bulimba, Qld 4171  
Moreton Island  
via Tangalooma  
Moreton Island, Qld 4004  
(075) 48 2710

Downs-South West Sub-  
Regional Office  
4 Alderley Street  
PO Box 7054  
Toowoomba Mail Centre,  
Qld 4352  
(076) 35 0688

Southern Downs District  
Office  
Hermitage Research Station  
via Warwick, Qld 4370  
(076) 61 3710

Kingaroy office  
c/- PO Box 23  
Kingaroy, Qld 4610  
(071) 62 1355

Northern Downs District  
see Sub-Regional Office  
Bunya Mountains  
MS501  
via Dalby, Qld 4405  
(074) 68 3127

Crows Nest  
Falls/Ravensbourne  
PO Box 68  
Crows Nest, Qld 4355  
(076) 98 1296  
Lake Broadwater  
PO Box 401  
Dalby, Qld 4405  
(074) 63 3562

Southern Downs District  
Office  
c/- District Ranger  
Girraween  
via Ballandean, Qld 4382  
(076) 84 5157

Sundown  
via Glenlyon Dam Road  
via Stanthorpe, Qld 4380  
(067) 37 5235

Main Range Centre  
Cunninghams Gap  
MS 394  
Warwick, Qld 4370  
(076) 66 1133

South West District Office  
c/- District Ranger  
Park Street  
PO Box 149  
Charleville, Qld 4470  
(074) 54 1255

Wide Bay-Burnett Sub-  
Regional Office  
cnr Wharf and Richmond  
Streets  
PO Box 101  
Maryborough, Qld 4650  
(071) 22 2455

Woodgate  
c/- Post Office  
Woodgate, Qld 4660  
(071) 26 8810

Urrungun Centre  
see Sub-Regional Office

Fraser Island Base  
c/- Park Overseer  
Dundubara  
Fraser Island Recreation  
Board  
c/ Q.NPWS  
Rainbow Beach Road  
PO Box 30  
Rainbow Beach, Qld 4570  
(071) 86 3160

Freshwater Base  
c/- Park Overseer  
Rainbow Beach  
(071) 49 7959

Gympie District Office  
Lands Office Building  
27 Channon Street  
PO Box 350  
Gympie, Qld 4570  
(071) 82 4189

Sir Thomas Hiley  
Information Centre  
(Kinabala)  
Q.NPWS Box  
Elanda  
via Tawantin 4565  
(071) 49 7364

Noosa  
Park Road  
Noosa Heads, Qld 4567  
(071) 47 3243

Kondalilla/Mapleton Falls  
3 Kondalilla Falls Road  
Flaxton  
via Nambour, Qld 4560

**Central Region**  
Central Regional Centre  
Royal Bank Building  
194 Quay Street  
PO Box 1362  
Rockhampton, Qld 4700  
(079) 27 6511

Southern Reef District  
including Capricornia  
see Regional Centre

Gladstone District Office  
Roseberry Street  
PO Box 315  
Gladstone, Qld. 4680  
(079) 76 1621

Fitzroy District Office  
see Regional Centre  
Keppel Islands-  
Capricorn Coast  
Rosslyn Bay Harbour  
PO Box 770  
Yeppoon, Qld 4703  
(079) 39 3268

Central Highlands District  
Office  
PO Box 906  
Emerald, Qld 4720  
(079) 82 2246

Carnarvon  
Carnarvon Gorge  
via Rolleston, Qld 4702  
(079) 84 4505

Mt Moffatt (Carnarvon)  
c/- Park Overseer  
Mt Moffatt  
via Mitchell, Qld 4465

Springsure  
c/- Park Overseer  
Springsure, Qld 4722

Taroom  
PO Box 175  
Taroom, Qld 4420  
Blackdown Tableland  
via Dingo, Qld 4702

Mackay District Office  
MLC Building  
64 Victoria Street  
PO Box 623  
Mackay, Qld 4740  
(079) 57 6292

Cape Hillsborough  
MS 895  
Seaford, Qld. 4741  
(079) 59 0222

Eungella  
c/- Post Office  
Dalrymple Heights, Qld 4740  
(079) 58 4552

**Northern Region**  
Northern Regional Centre  
Marlow Street  
Pallarenda  
PO Box 5391  
Townsville Mail Centre,  
Qld 4810  
(077) 74 1411

Proserpine District Office  
Conway  
PO Box 332  
Airlie Beach, Qld 4802  
(079) 46 9430

Magnetic Island  
c/- Post Office  
Picnic Bay, Qld 4816  
(077) 78 5378

Burdekin District Office  
see Regional Centre

Bowling Green Bay — Mt  
Elliot  
PO Box 1954  
Townsville, Qld 4810  
(077) 78 8203

Jourama Falls  
PO Box 1293  
Ingham, Qld 4850  
(077) 77 3112

Hinchinbrook District Office  
2 Herbert Street  
PO Box 1293  
Ingham, Qld. 4850  
(077) 76 1700

Cardwell District Office  
PO Box 74  
Cardwell, Qld 4816  
(070) 66 8601

Mt Spec-Crystal Creek  
c/- Post Office  
Paluma, Qld 4816  
Paluma 2G

North West District Office  
Mt Isa House  
Cnr. Mary and Miles Streets  
PO Box 2316  
Mt Isa, Qld 4825  
(077) 43 2528

Edmund Kennedy  
PO Box 74  
Cardwell, Qld 4816  
(070) 66 8850

**Far Northern Region**  
Far Northern Regional Centre  
Moffatt Street  
PO Box 2066  
Cairns, Qld 4870  
(070) 53 4533  
Marine Parks office  
cnr Spence and Abbott Streets  
(070) 51 9811

Mission Beach Office  
Garners Beach Road  
PO Box 89  
Mission Beach, Qld 4885  
(070) 68 7183

Josephine Falls  
PO Box 93  
Miriwinni, Qld 4871  
(070) 67 6304

Palmerston  
PO Box 800  
Innisfail, Qld 4860  
(070) 64 5115

Cape Tribulation  
PMB 10  
PS 2041  
Mossman, Qld 4873

Lake Eacham, Trinity District  
Office  
PO Box 21  
Yungaburra, Qld 4872  
(070) 95 3768

Northern Einseigh District  
Office  
PO Box 38  
Chillagoe, Qld 4871  
Chillagoe 13

Lakeland, New Laura, Bizant  
PMB 29  
Cairns Mail Centre, Qld 4870  
(070) 60 2162, (070) 60 2160,  
(070) 60 2158

Rokeby  
PMB 28  
Cairns Mail Centre, Qld 4870

Lawn Hill  
PMB 12  
MS 1463  
Mt Isa, Qld 4825

# Where to find us

## Guide to campsite booking

Each edition of the Service quarterly newspaper Ringtail carries an up-to-date listing of the attractions and facilities of the most popular national and environmental parks.

Features of many of the parks are outlined, a map locates major parks and office postal addresses and telephone numbers are given.

Many thousands of visitors each year get added enjoyment from national parks by camping for one or more nights.

A written permit to camp is required for camping on any national park in Queensland.

A site booking system operates to ensure the visitor a site is available before he travels to his destination.

An application for a site should reach the relevant booking office listed not earlier than 12 weeks or less than six weeks before the proposed date of arrival.

An application in writing should include the group leader's name, address and vehicle/boat registration number, the number in the party, the date of expected arrival and proposed duration of stay, the number and type of camping structures and/or vehicles, the proposed camp-

ing area, whether the group is from a club or organization and if so, which one, and whether an alternate date or area in the park would be acceptable.

You must include a self-addressed envelope for the notification of whether a campsite is available.

This will be sent at least four weeks before the visit.

Late applications for sites in writing, by telephone or in person will be considered only if a site is available within the camping area.

Visitors should be aware that the more popular national park camping areas like Freshwater and Double Island Point, Green Mountains, Bunya Mountains, Girraween, Carnarvon Gorge and North West Island are often fully booked at peak holiday times.

Whether you book ahead or make a late application, you require a camping permit from the ranger on the park.

Where the park is unstaffed, your permit will be forwarded to you with your site notification.

If you change your plans or find you have double booked, please notify the booking office to allow reallocation of the site.

There is no fee for site booking or a camping permit.

If you reach a camping ground in the late afternoon or at night when no ranger is on duty, set up your camp in a vacant space.

Your booked space can be determined next day. If you have not booked a site, and all have been taken, be prepared to move on perhaps to another park.

Service rangers are praised often for their ingenuity in making arrangements satisfactory to all visitors.

Please appreciate that some national parks, because of their size, location, use or environmental importance are not available for camping.

In some areas, road access for vehicles is provided and facilities developed.

In others, the park has been left undeveloped to provide a more primitive camping experience.

Backpack camping is prohibited within 2km of developed camping grounds, graded tracks and roads.

Park rangers have details of other conditions of the privilege to camp designed to protect the natural environment.

Post this form to request a campsite.

Party leader.....  
(please print)

Address..... Postcode..... State.....

Vehicle/boat registration no..... Space requested for (insert number) large tent/s,

Or hire vehicle/charter boat?..... small tent/s, caravan/s, vehicle/s, bus/es,  
campervan/s, trailer/s, other/s (specify)\*

National park..... Will you be visiting as part of an organized group, club

Campground sought..... etc?.....

No. in party including leader..... Which one?.....

Anticipated arrival date, time..... Possible alternate date/s.....

Departure date..... Alternate campsite.....

Additional details?.....

Any questions?.....

\* Only on certain sites are generators allowed. Indicate proposed use.

Ensure you include a self addressed envelope for a reply.



Published by the Queensland National Parks and Wildlife Service. Printed by The Queensland Times, 260 Brisbane Street, West Ipswich. ISSN 0811-6237.

Any opinions expressed or inferred from articles are not necessarily those of the Queensland National Parks and Wildlife Service.

Editors of non-commercial publications may use any item with acknowledgement. Other editors should contact the Service.

This publication is not available on a regular mailing basis.



## Gazettals, actions

# Range country added to park

Two of central Queensland's most popular national parks, Eungella and Carnarvon, have been extended.

Three additions to Carnarvon include 6230ha of high tableland country of great scenic value along the great dividing range.

This was surrendered from the Deepdale holding and links the Buckland Tableland and Carnarvon Gorge/Mt Moffatt sections of Carnarvon.

The other areas are 17.5km of former shire road in Mt Moffatt and a former camping and recreation reserve on the range top.

The additions with recalculations bring Carnarvon's area to 223,000ha.

The major change to Eungella has been the addition of 208ha of

former timber reserve land to the watershed north-west of Finch Hatton township.

The park's area has been recalculated at 50,800ha.

Parliament recently approved the revocations of six parts of national parks, Grey Peaks, Cape Hillsborough, Eungella, Cape Upstart, Rosslyn Bay and Nypa Palms, part of the Townsville Town Common Environmental Park, and the Cooloola Fauna Reserve.

A 23.9ha part of the Moresby Range near Etty Bay, mostly spectacular undeveloped rainforest, was gazetted environmental park.

## Lawn Hill opened

One of the state's most remote national parks, Lawn Hill, was opened officially recently by the Premier, Sir Joh Bjelke-Petersen.

More than 100 people ventured by light aircraft and four-wheel-drive vehicle to Lawn Hill National Park, 250km north-west of Mt Isa.

The opening took place near the Duwadari waterhole in Lawn Hill Creek, in Aboriginal mythology said to be the home of Boodjamulla, the rainbow serpent.

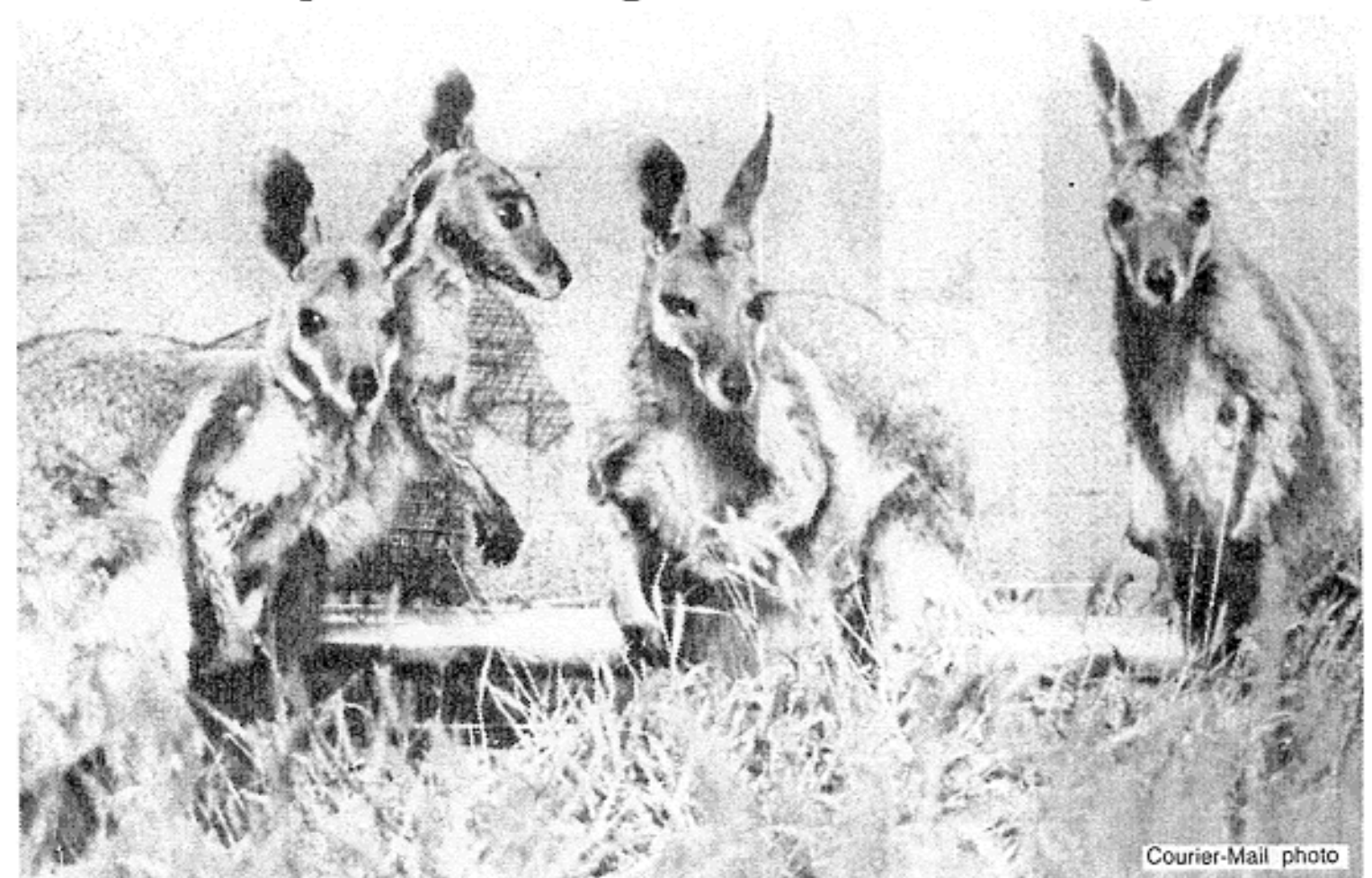
The Service, the Commonwealth

Government and the Burke Shire spent a total of \$1 million of taxpayers' money developing access, a range base, public facilities and walking tracks in the new national park.

Despite its remoteness, the 12 200ha oasis in a generally dry region of the state is already attracting more than 3000 visitors a year.

New boardwalks let visitors see two Aboriginal art sites, and acrylic signs provide explanations.

## Temporary holiday



Four yellow-footed rock wallabies, one of Queensland's permanently protected species in a temporary enclosure at the Q.NPWS Charleville centre. Thirty members of a Brisbane-based Army artillery unit, 131 Divisional Locating Battery, assisted in their capture for research during an exercise in November in the Blackall-Adavale area where populations were relocated last year.

## Frog disappears at Eungella

Queensland National Parks and Wildlife researchers are baffled but not surprised by the disappearance of a special frog located not two years ago.

National Parks Minister Peter McKechnie said this month that several searches of Eungella National Park near Mackay this year had failed to reveal any Eungella gastric brooding frogs.

The frog had been given the scientific name of *Rheobatrachus vitellinus*, vitellinus meaning egg yolk, because the dull brown frog is golden on the underside of its legs, arms and lower abdomen.

It is known to brood its young

in its stomach, a fact which has aroused international biomedical interest.

Mr McKechnie said the frog was reasonably abundant in its only known habitat in the national park in 1984.

Park management had not changed the park's environment in any way.

A related species, *Rheobatrachus silus*, located in south-east Queensland in the 1970s, had not been sighted since 1979.

The group of frogs was declared fauna under the Fauna Conservation Act in

February this year.

Mr McKechnie said the Eungella frog's disappearance was consistent with recorded amphibian behaviour where sightings of adults had been spaced widely in place and time.

He said the question could be asked why weren't gastric brooding frogs found and described until recently.

A logical answer was that they were among a group of amphibians which behaved cyclically appearing in restricted areas before making cryptic disappearances for long periods.

### Junior Ranger corner

## Planning a picnic area

Hello Junior Rangers,

Do you remember the magpies which were nesting in my gum tree I told you about last time?

Well, they have raised their babies and the young magpies have fledged (left the nest) and are now on their own.

Another pair of magpies were nesting across the road in a patch of bamboo.

Everytime someone would ride by on a horse they would attack them.

They had one go at attacking me when I was riding my horse in the paddock but when I said 'Hello maggie' to them they stopped.

I always say 'Hello maggie' when I feed them their morning snack and they must have recognized my voice.

Look at the drawing of a plan for a national park picnic area on a lake done by a child who attended the Lake Broadwater Environmental Leaders program as part of a project.

I thought it was a very good. Can you see any place where it might be

improved or you would like to change it?

Would you add more picnic tables or perhaps make the shop and toilet area smaller and the car park larger?

I especially liked the way the existing trees were kept and tables and BBQs put in among them.

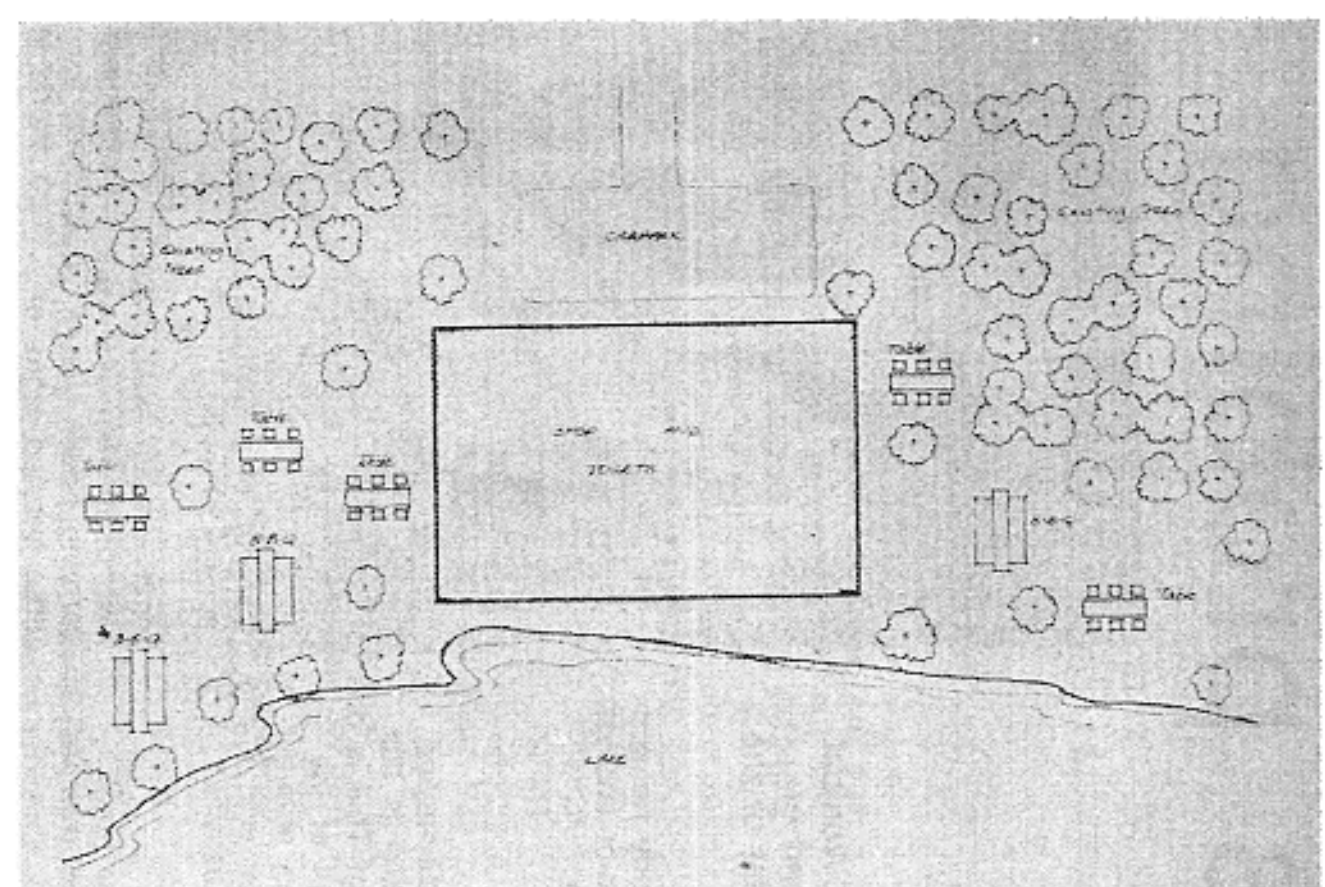
It is very important for us to keep as many big trees as possible. They take a long time to grow and provide homes, shelter and food for so many animals.

Birds, insects and other invertebrates (animals without backbones — if they have a skeleton its usually on the outside not the inside) are the ones we usually think of.

If you think more you will be able to think of some mammals, reptiles and amphibians which use trees too.

For your game this time I have a hard one.

There are two groups. The first is 10 relatives of familiar animals we all



know. The second is a list of opposites of some other familiar animals.

The task is to sort them out to find the relatives and opposites.

Relatives — henatoo, cakethon, queenfisher, ladah, platydog, cartard, lion snake, cone frog, short-necked turtle, marsupial rat.

Opposites — dogapillar, womball, unipede, truthbird, flooraby, comeanna, red-ground frog, dincome, badwit, oysterdropper.

Answer: Relatives — cockatoo, python, kingfisher, galah, platypus, bustard, tiger snake, cane toad, long-neck turtle, marsupial mouse. Opposites — caterpillar, wombat, millipede, wallaby, goanna, green tree frog, dingo, godwit, oystercatcher.

If you do not know what some of these animals look like, look them up in a good reference book. They are all native to Queensland.

Ranger Frances



# Scientists probing wombat secrets

Viewers of the children's television show Wombat across Australia have voted the Queensland or northern hairy-nosed wombat as the Animal of the Year.

The announcement was made by the Queensland National Parks and Wildlife Service Director, Dr Graham Saunders, on a special segment of the show recorded by BTQ7 Brisbane and broadcast recently.

The competition involving five Australian animals considered endangered was sponsored by Comalco and Trans Australia Airlines.

After the announcement, a cheque for \$10,000 was presented on behalf of Wombat viewers to World Wildlife Fund Australia represented by its associate director Mr Michael Chilcott.

The competition sought to choose the animal which most deserved all of the money to be spent towards its conservation.

The wombat is the subject of To date 11 males and seven

an extended study headed by Q.NPWS senior zoologist Doug Crossman.

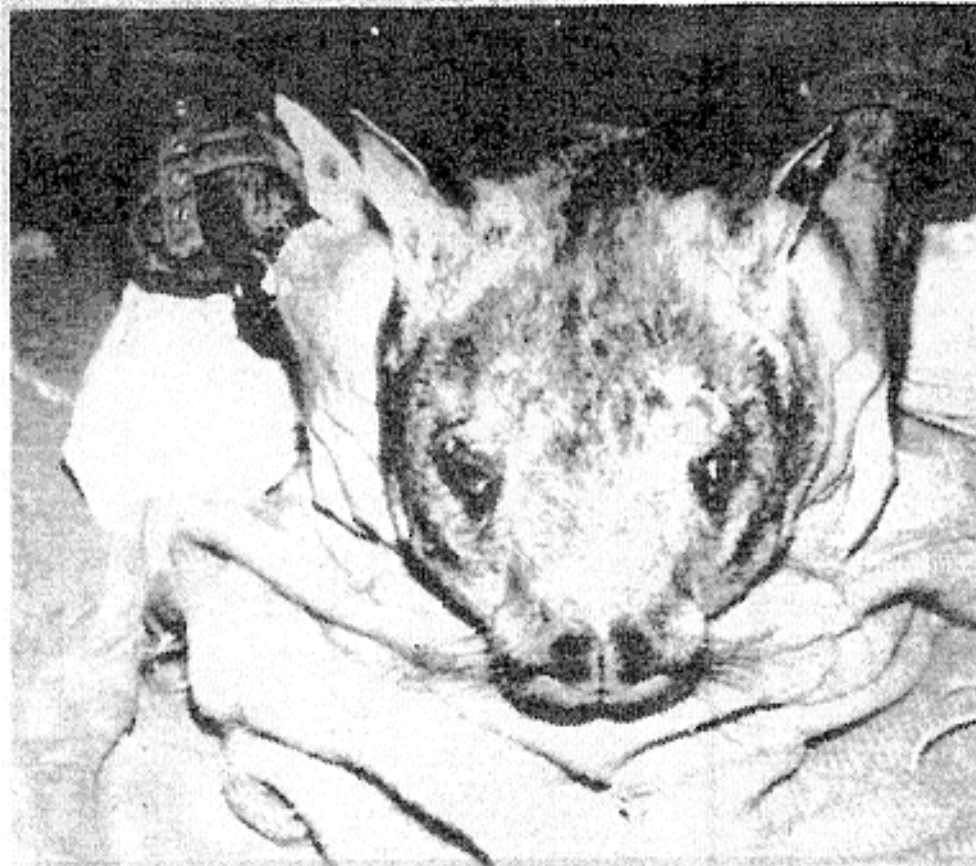
He writes:

The northern hairy-nosed wombat population is still producing young! This is one fact to come out of the trapping program already being undertaken with World Wildlife Fund Australia money.

A very particular (and perhaps peculiar) trap has been designed.

Following successful trials, 22 are now in operation at Epping Forest.

Ten traps are permanently located to allow for monthly trapping of the same individuals. The other 12 are being moved slowly through the colony.



Closeup of a northern hairy-nosed wombat during research activity at night.

females have been trapped. Two of the females were carrying pouch young, and three showed signs of feeding young still in the burrow.

Immature males and females have been caught indicating a good spread of ages in the population.

All of the wombats caught have been in good condition reflecting the sound condition of the Epping Forest habitat following good winter rains in

recent years, and the exclusion of cattle grazing.

World Wildlife Fund money has assisted in transferring a transportable accommodation/laboratory unit to Epping Forest.

This unit has now been provided with 240 volt power and rainwater tanks to give accommodation suitable for extended visits by Q.NPWS staff and biologists visiting from interstate and overseas.

(Epping Forest is rather remote, some 120km north-west of Clermont).

Other work being undertaken includes night observations to learn about wombat behaviour and social organization.

(Wombats are nocturnal creatures.)

Accurate mapping and descriptions of burrow complexes is under way.

Radio telemetry operations to help determine how wombats utilize their habitat is planned for early 1986.



Unusual hoop shaped trap which has been developed to capture wombats regularly.

# Ringtail



QUEENSLAND  
NATIONAL PARKS  
AND WILDLIFE  
SERVICE

## Animal of the Year



Animal of the Year, a northern hairy-nosed wombat held by ranger Gary Porter after being captured in Epping Forest National Park, central Queensland, for research measurement. The national park is the only known habitat of the northern hairy-nosed wombat and for that reason has been declared a restricted access area. Turn the page for a report and more pictures.