



PARTNERSHIP PROSPECTUS

Parks and Leisure Australia Awards of Excellence Gala Dinner

Wrest Point, Sandy Bay Tasmania

11 November 2025

Join us to celebrate the best of the best of
Australia's parks, sports and leisure industry.

This is a night not to be missed!

Proudly sponsored by



ABOUT THE AWARDS

For over 20 years PLA has recognised excellence in the parks and leisure industry through its awards program. The PLA Awards of Excellence aims to promote and encourage best industry practice and recognise achievements and outstanding work of individuals and teams employed in the parks and leisure industry.

PARTNER BENEFITS

- The opportunity to present the award on stage
- Two complimentary tickets and priority seating
- Acknowledgement by the MC of your support
- Logo placement on Awards booklet
- Logo on screen against nominated category
- Photo opportunity with the winner on the night
- Access to the dinner list prior to the event (excluding names and organisational details of those who have opted out from sharing this information)
- Logo across all promotional materials leading up to the event
- Promotion via social media leading up to the event

INVESTMENT:
\$2,195 (EX GST) PER AWARD CATEGORY

AWARDS CATEGORIES

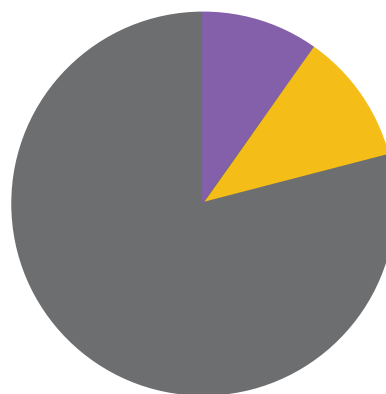
DAVID ALDOUS YOUNG PROFESSIONAL OF THE YEAR AWARD - SOLD	This award seeks to recognise and celebrate outstanding contributions made by a student or emerging professional (under 30 years of age) in a course of study leading to a nationally recognised qualification in the sector throughout Australia or who has made a significant contribution to the parks and leisure industry.
ENVIRONMENTAL STEWARDSHIP AWARD	This award recognises community events which receive third party sponsorship and charge an admission or participation fee. The event is commercial (major sponsorship / partnerships) in nature and promotes community participation through industry related events.
COMMUNITY BASED INITIATIVE OF THE YEAR AWARD	This award is designed to recognise the combined effort that is required to successfully plan, organise and manage effective initiatives, projects, programs, events and/or festivals which promote and enhance leisure time for a number of social, environmental and economic benefits to the community. Evidence of the success should form a component of the submission.
STRATEGIC AND MASTER PLANNING AWARD	This award recognises the development of strategies for parks, open space, sport, recreation and leisure opportunities by rewarding outstanding examples of strategic planning that have enriched and revitalised a community.

ABOUT THE AWARDS

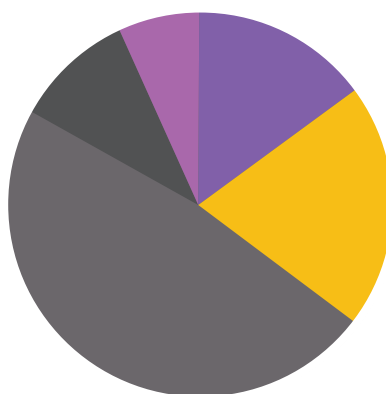
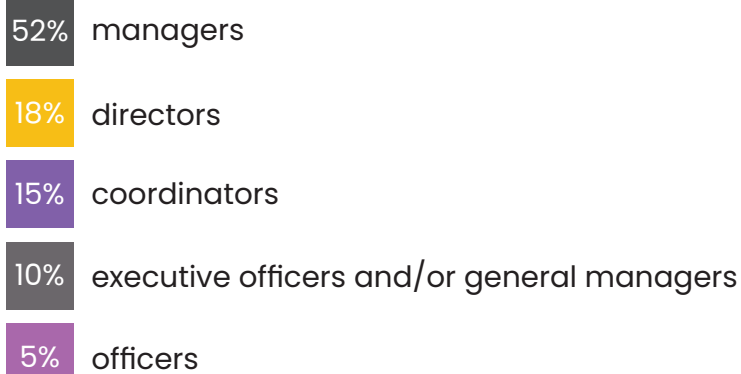
COMMUNITY FACILITY OF THE YEAR AWARD	This community facility award recognises facilities that demonstrate innovative features of design, development and operation.
PARK OF THE YEAR AWARD - SOLD	This award celebrates and promotes vibrant, successful well designed and managed new or significantly revitalised parks/ open spaces by recognising and rewarding exceptional examples of best practice in terms of design and management.
PLAYSPACE AWARD: (\$0.5M>)	This award is given to a playspace over the value of \$500,000 that involves a range of stakeholders, contributes to the creation of a sense of “place” for its local community and exhibits landscape and/or structural design innovation that delights and aids childhood development.
PLAYSPACE AWARD: (<\$0.5M)	This award is given to a playspace under the value of \$500,000 that involves a range of stakeholders, contributes to the creation of a sense of “place” for its local community and exhibits landscape and/or structural design innovation that delights and aids childhood development.
RESEARCH PROJECT AWARD	This award acknowledges outstanding research achievement by a group or individual, professionals, student or academics who have made a significant contribution to the parks and leisure industry through expanded knowledge enhancement promoting the benefits or importance of the parks and leisure sector in Australian society.
BEST USE OF TECHNOLOGY AWARD - SOLD	This award acknowledges outstanding and innovative achievement in the area of technology application and how that application has benefited the industry.
BEST REGIONAL / RURAL INDUSTRY CONTRIBUTION AWARD	Region/Rural Australia includes all of the towns, small cities and areas that lie beyond the major capital cities (Sydney, Melbourne, Brisbane, Perth, Adelaide, Darwin, Hobart and Canberra), who make a significant contribution through community initiatives which contribute to the parks and leisure industry. These projects can be playspaces, events, tourism, trails, programs, re-purposing of facilities and environmental initiatives.

GUEST PROFILE

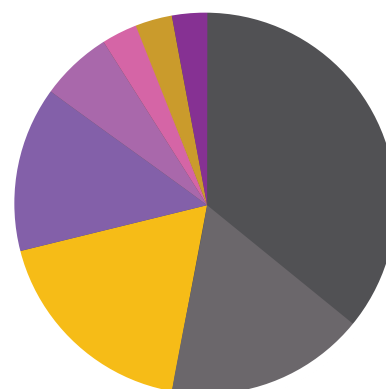
INDUSTRY PROFESSIONALS ATTEND THE AWARDS OF EXCELLENCE GALA DINNER EACH YEAR



POSITIONS HELD



SECTORS





Parks and Leisure Australia National Office

6 Todd Street

Port Adelaide SA 5015

E events@parksleisure.com.au

P +61 8 8332 0130

parksleisure.com.au

