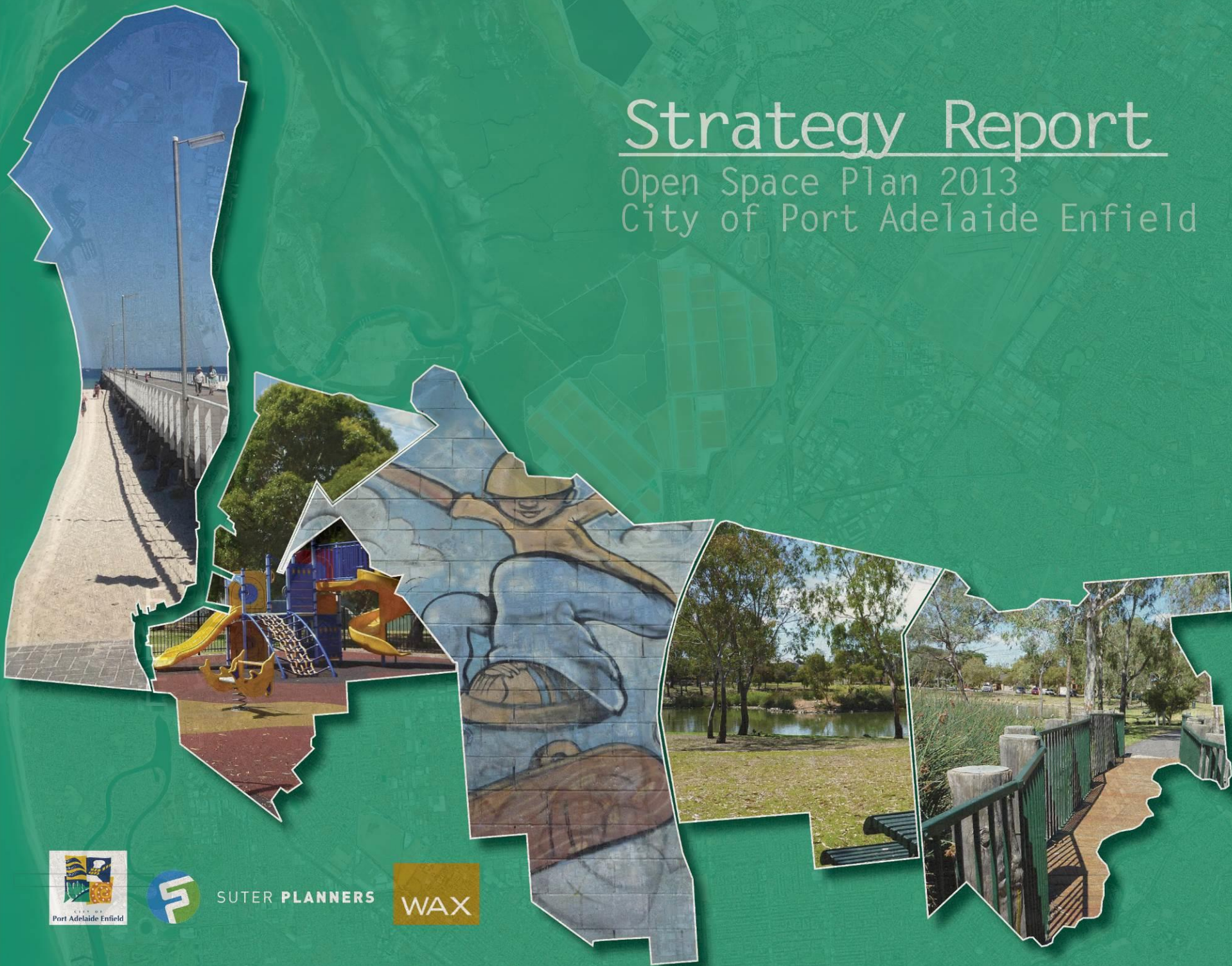


Strategy Report

Open Space Plan 2013
City of Port Adelaide Enfield



ACKNOWLEDGEMENTS

The Open Space Plan 2013 has been commissioned by the City of Port Adelaide Enfield.

The study has been undertaken by Suter Planners and WAX Design and lead by Suzanne Suter of Suter Planners.

The study was managed by Sara Hobbs Urban Planner and Rosa Gagetti Manager Strategic Planning for the City of Port Adelaide Enfield. A number of Council staff provided input into the project, including:

- George Levay, Manager Parks and Gardens
- Andy Walker, Project Officer Parks and Gardens
- Tim Noonan, Property Officer
- Laura Perdue, Obesity Prevention and Lifestyle (OPAL) Manager

The enthusiastic involvement of Elected Members and the community through the consultation period was very much appreciated.

The Final Plan was endorsed by Council on 11 March 2014.



SUTER PLANNERS

Suter Planners
PO Box 158
Glenside SA 5065
South Australia
Australia

Tel 08 8379 7768
Fax 08 8379 7763
suzanne@suterplanners.com.au
www.suterplanners.com.au

CONTENTS

EXECUTIVE SUMMARY	i	STRATEGIES AND ACTIONS	23
		Theme 1: Balanced Provision and Quality	23
THE STRATEGY CONTEXT	1	Theme 2: Defined Destinations	29
Purpose of the Strategy	1	Theme 3: Diverse Sports Opportunities	39
The Planning Approach	2	Theme 4: Connected and Active Communities	45
The Reports	3	Theme 5: Enhanced Nature, Biodiversity and Green Infrastructure	54
		Theme 6: Quality Design, Function and Facilities	61
KEY FINDINGS	5	IMPLEMENTING THE STRATEGY	65
2006 Open Space Plan	5	Implementation Approach	65
Other Previous Planning	5	Timing and Resources	66
Open Space Provision	7	Strategy Evolution	67
Community Needs	11		
Key Issues, Gaps and Opportunities	12		
THE STRATEGY FRAMEWORK	15		
The Strategy Components	15		
Open Space Principles	16		
Open Space Themes	18		
The Theme Directions	19		



EXECUTIVE SUMMARY

Introducing the Open Space Plan 2013

The Open Space Plan 2013 will assist Council to make strategic decisions relating to the future provision, development and management of open space in the City of Port Adelaide Enfield. The Open Space Plan 2013 replaces Council's Open Space Plan 2006.

The Open Space Plan 2013 includes three reports as follows:

Report 1: Background Report

Report 2: The Strategy (this report)

Report 3: Open Space Guidelines

The Strategy Report includes directions, strategies and actions relating to six 'Themes of importance' as shown in Figure 1.

Collectively the Themes address all key issues and opportunities associated with open space in the City of Port Adelaide Enfield.

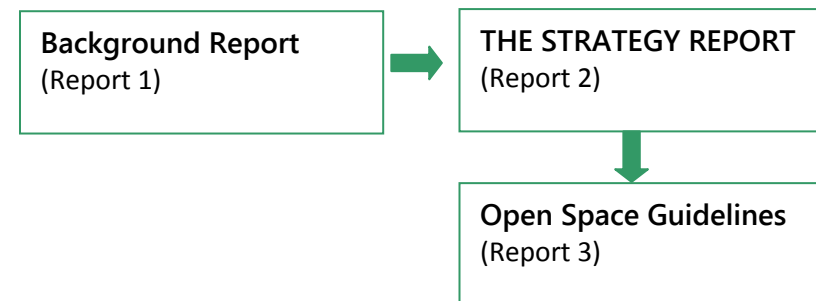
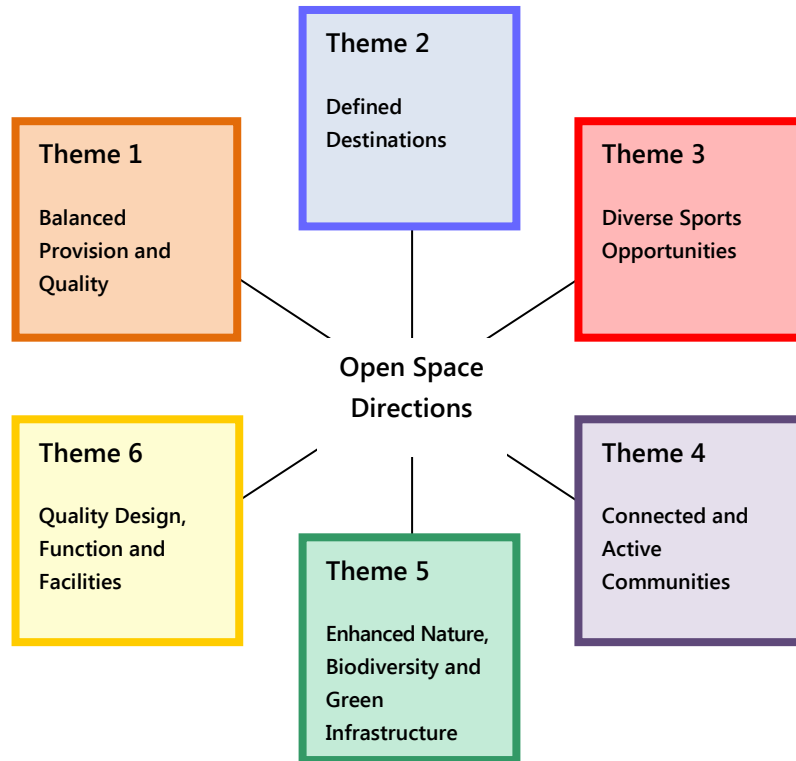


Figure 1: Themes of Importance



The strategies and actions in the Strategy Report include a number of projects that will be considered in Council's 10 Year Works Plan as funds become available and in accordance with other Council priorities. Whilst the Open Space Plan 2013 does not commit Council, the State Government or any other body to undertaking projects, it will guide Council priorities and support grant funding applications as appropriate.

The Open Space Guidelines provide a framework for the development, design and management of open space and will assist Council to negotiate an appropriate provision of open space in future new development areas.

The Background Report provides information and analysis that substantiates the directions, strategies and actions and projects in the Strategy Report. The Background Report considers the status of the Open Space Plan 2006, summarises the findings of previous studies, and draws together demand and supply findings.

The Key Findings

The main findings of the Open Space Plan that have influenced the directions in the Open Space Plan are summarised below.

The City of Port Adelaide Enfield has 684.74ha of open space which, as at 2011, represents 6.07ha per 1,000 people. Whilst this is a relatively good provision, 202.77ha of the open space is wetland or drainage and the open space that is more usable (recreation, sport, linear, coastal) only represents 3.64 ha per 1,000 people (which is still considered to be adequate) although some suburbs are lacking open space. This highlights the importance of retaining most existing open space and in some instances there could be justification for land acquisition. Council could also advocate to the State Government for the retention of government owned land for public use where appropriate.

The City of Port Adelaide Enfield is anticipated to have a relatively large population of 124,000 people by 2016 and young people, children and families are increasing. In addition, the population is multi-cultural with 30.53% of the population born overseas together with 2,720 Aboriginal and Torres Strait Islander people. This justifies a focus on family oriented and culturally based open spaces and facilities. Additionally, a number of areas in the City are represented by a lower socio-economic demographic that tends to correlate with poorer health outcomes and 30.6% of the population indicated at the 2011 Census that they were living alone. These characteristics highlight the importance of providing accessible and affordable open spaces and related activity opportunities to support social interaction and encourage physical activity.



Through various recent surveys the community has indicated that open space is extremely important to them. The use of parks, beaches and sportsgrounds for recreation is high and people have indicated particular demand for play spaces, open areas for casual sport, walking and bike tracks, places to walk dogs and spaces to gather and celebrate cultural heritage.

There is potential to improve the quality of open spaces and the provision of activity opportunities in the City of Port Adelaide Enfield. The community would particularly benefit from enhancements to coastal, recreation and sporting open spaces and open spaces that justify greatest improvement are in the Port, Park and Inner Statistical Local Areas. Increased activity opportunities should be considered for older children and youth.

Natural areas are limited in the City of Port Adelaide Enfield and this highlights the need to strengthen biodiversity in parks and reserves and protect the existing natural areas.



Open Space Principles

Ten principles have been developed to provide a framework for the Open Space Plan 2013 as follows.

1. The City of Port Adelaide Enfield will provide an equitable spread of good quality, diverse and appealing open spaces that contribute to the liveability and visitor appeal of the City.
2. Open spaces will have different levels of quality and development in accordance with open space type and hierarchy, as part of a targeted and realistic approach to meeting community needs.
3. The City will provide quality recreation destinations and sports grounds that support a diversity of activities and appeal to the wider community and visitors.
4. Diverse recreation activity opportunities will be provided to support diverse community needs. This includes family and recreation oriented open spaces that support informal as well as organised activities.
5. Recreation, sporting facilities and infrastructure within open spaces will be designed to be functional, accessible and affordable to support community use and enhance amenity.
6. Natural areas will be protected and enhanced and opportunities for improving biodiversity and habitat areas will be strengthened across the City.
7. Cultural diversity, heritage and creativity will be supported and promoted through creative design, event and display spaces, public art, interpretation and other features and activities within open space.
8. Open space will be well maintained and managed to ensure safe and appealing spaces for community activity.
9. Programs and events will be facilitated and supported to achieve vibrant open spaces and connected communities.
10. Open space and the public realm within the Port Centre will be developed as a critical part of the progressive regeneration of the City of Port Adelaide Enfield.

Theme Directions

Overriding directions have been developed for each Open Space Theme and these are outlined below. The detailed strategies and actions within each Theme are included in this report and should be read in full.

Theme 1: Balanced Provision and Quality

Direction:

Aim to achieve a balanced provision of quality open space across the City through open space improvements and by addressing gaps in provision, with a particular focus on the Park, Inner and Port Statistical Local Areas.

Theme 2: Defined Destinations

Direction:

Establish a spread of quality and distinctive recreation destinations across the City that collectively provide an activity and social focus for all people in the community. This includes strengthening the destination value of the foreshore and The Port Centre.

Theme 3: Diverse Sports Opportunities

Direction:

Continue to provide for and support a diversity of good quality sports facilities and activity opportunities across the City, including casual/informal participation opportunities.

Theme 4: Connected and Active Communities

Direction:

Broaden the opportunities for the community to be physically active and socially and culturally connected including through strengthened linear connections and streetscapes, and creating diverse activity opportunities within open spaces.

Theme 5: Enhanced Nature, Biodiversity and Green Infrastructure

Direction:

Conserve and enhance natural open space and strengthen the biodiversity, habitat value and function of natural and constructed landscapes and green infrastructure provision (stormwater, drainage, streetscapes).

Theme 6: Quality Design, Function and Facilities

Direction:

Continue to enhance the quality, design and function of open spaces through appropriately developed and well managed and maintained facilities and infrastructure.

“What I have learned convinces me that there is one overriding consideration for any open space program.

It is, simply, that open space must be sought

as a positive benefit. Open space is not

the absence of something harmful;

it is a public benefit in its own right,

and should be primarily justified on this basis”

William Whyte, *Securing Open Space for Urban America*, 1959



Implementing the Plan

The implementation of the Open Space Plan 2013 will occur over a number of years as resources become available. The Open Space Plan does not commit Council or any other body to implement directions or actions but it will assist Council to make informed decisions regarding open space improvements and priorities.

Implementation should be undertaken as follows:

1. The principles, directions and strategies in the Strategy Report should be adopted and reflected in broader planning and capital works decisions.

2. The Open Space Guidelines should be adopted and used to guide the future provision, planning, development, design and management of open space on an ongoing basis.

The Strategy Report aims to guide Council, State Government and the community at a strategic level and the Guidelines aim to provide practical guidance to Council and developers in the provision and design of open space.

The Open Space Plan 2013 should be reviewed by Council staff on an ongoing basis and the Plan should evolve over time to reflect changing needs and Council priorities as appropriate.



THE STRATEGY CONTEXT

Purpose of the Strategy

In 2006 the City of Port Adelaide Enfield developed an Open Space Plan that identified Strategic Actions for various topics and recommended specific works. The 2006 Open Space Plan has been used as a working document to guide Council with its decision making and resource allocation over the past seven years. Over this time, there have been numerous achievements, including improved open spaces and increased opportunities for sport and recreation.

Council commissioned the Open Space Plan 2013 to enable the directions and actions in the 2006 Plan to be updated and to respond to current and future community needs and priorities. A main aim of the Open Space Plan 2013 is to provide a current framework for achieving future improvements to open space and responding to community needs.

Specifically the Open Space Plan 2013 will guide the future provision, development and management of open space and related facilities and infrastructure across the City of Port Adelaide Enfield for the next five years and beyond. The Plan relates to all types of open space including sporting open space, coastal open space, recreation open space, linear open space, drainage and wetlands, natural areas and streetscapes. Ultimately the Plan will provide a sound and clear direction for all types of open space.

Council recognises that open space is a highly valuable resource that contributes to the quality of life and health and well-being of its community. Council is therefore committed to ensuring an appropriate provision of good quality open space that supports diverse activities and encourages participation in physical activity and social interaction.

Whilst the Open Space Plan 2013 does not commit Council or any other organisation or community group to undertake open space improvements, the Strategy will assist Council to determine the priorities and guide the allocation of resources to open space as the resources become available. The Plan will also assist Council to seek grant funding and achieve partnerships.

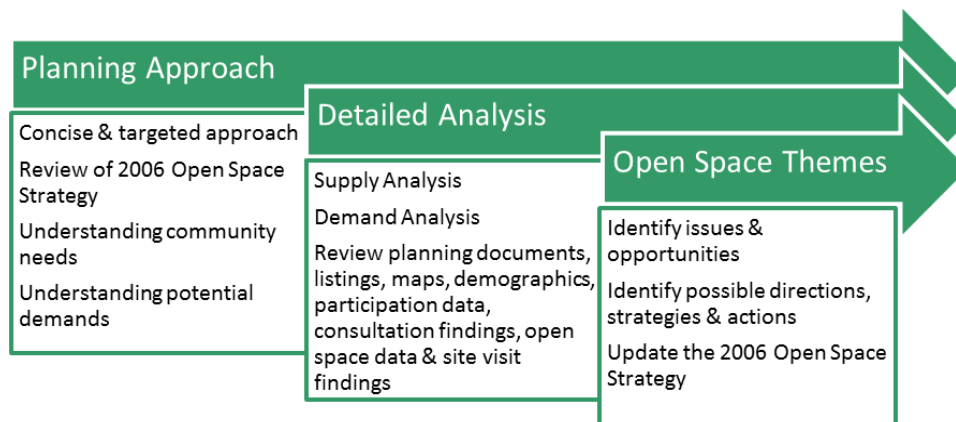
The Planning Approach

The Open Space Plan 2013 will update the 2006 Open Space Strategy and identify new and current issues, opportunities, directions, strategies and actions.

The study commenced with a review of other planning documents including the 2006 Open Space Strategy, and this provided a context for the Open Space Plan 2013. Relevant strategic actions and proposed works in the 2006 Open Space Strategy and the implications of Council and State planning undertaken since the 2006 Open Space Plan have been taken into consideration.

The study has focused on understanding community needs and potential demands as well as the existing provision of open space and related facilities (supply). This has involved a review of open space listings, maps, demographics, participation data, consultation findings, open space data and site assessments to give an understanding of open space provision and requirements. The analysis has highlighted potential gaps in provision and the opportunities for Council to better service the open space requirements of the community.

Figure 2: Planning Approach



The Reports

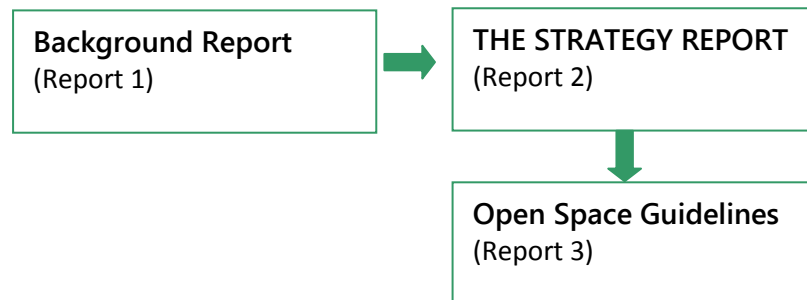
The Open Space Plan 2013 has involved developing three reports and one guideline report as outlined below.

REPORT 1: Background Report

REPORT 2: The Strategy Report

REPORT 3: Open Space Guidelines

Figure 3: Report Relationship



An indication of the role of each document is as follows:

- The Strategy Report is a strategic document that provides higher level directions and strategies as well as specific actions. It is written as a 'standalone' document with background information and suggestions for implementation.
- The Background Report outlines the findings of the research and analysis undertaken during the study which provides the basis for the directions and strategies in the Strategy Report.
- The guidelines aim to guide open space provision and development, including for new development areas. The guidelines modify and build on previous guidelines developed for the City of Port Adelaide Enfield.



*“If the public open space is the most visible indicator
of the health and vitality of our cities
and by the same token the health of our communities.
Then the future planning and
delivery of quality open space is critical”*

Warwick Keates, 2011

KEY FINDINGS

This section summarises the main findings identified through the planning process and the findings are outlined in greater detail in the Background Report (Report 1). The findings are based on reviews, research, consultations and an analysis of demand, supply, issues and opportunities.

2006 Open Space Plan

The 2006 Open Space Plan included strategic actions relating to types of open space, specific facilities and particular groups in the community. This included the coastline, recreation and sporting open space, linear parks and trails, natural areas, play spaces, young people, cultural groups and various other issues and opportunities.

The 2006 Plan included 22 strategic actions in total and most of these are high level actions that are still relevant today. Where relevant these strategic aims are reflected within this Open Space Plan.

Other Previous Planning

State level planning and policy tends to revolve around:

- Creating vibrant places for people to live, work and visit.
- Increasing urban development in accordance with the 30 Year Plan for Greater Adelaide (linked to transport nodes and to create vibrant centres).
- Encouraging communities to participate in physical activity and remain healthy and active, including as they age.
- The establishment of connected quality open space, including as part of corridors, greenways and trail systems.
- The establishment of partnerships and shared-use opportunities.

The State directions are considered as part of the Open Space Strategy 2013.

The City of Port Adelaide Enfield City Plan 2010-2016 is also a key document that is highly relevant to the Open Space Strategy 2013. The vision and relevant goals and objectives in the City Plan are as follows.

“Our Vision is for:

- A City that values its rich history and cultural identity
- A City that embraces and celebrates its diversity and encourages community connection
- An innovative, economically thriving and environmentally responsible City
- A City of opportunity realising its potential”

The relevant goals and objectives in the City Plan are outlined below.

Relevant City Plan Goals

- A healthy and connected community that supports and values people, culture and place.
- Natural and urban environments characterised by clean air, soil, water and biodiversity that are cared for and respected by businesses and the community.
- A vibrant and attractive City that is well planned and accessible, with safe and healthy places to live, work and play.

Relevant City Plan Objectives:

- An active and healthy community that has access to positive lifestyle choices.
- An effective and integrated approach to sustainable water management.
- The impacts of climate change on the local community, the natural environment and Council’s infrastructure are identified and addressed.
- A Council and community committed to reducing greenhouse gas emissions and water consumption.
- Areas of biodiversity in the City are protected and expanded.
- An urban environment characterised by attractive and sustainable landscaping and usable open space throughout residential and commercial areas.
- Equitably distributed and accessible community assets and infrastructure provided and maintained in a fit-for-purpose condition.
- Natural and built heritage that is widely appreciated and protected.

In addition, the Recreation Assets Needs Assessment (RANA 2008) includes valuable information and directions relating to non-organised activities and survey findings regarding community needs and opinions.

Further information relating to these documents is summarised in the Background Report (Report 1).

Open Space Provision

The City of Port Adelaide Enfield has 664.19 hectares of open space which represents 5.89 hectares per 1,000 people. Whilst this is a relatively good provision, the figure includes 261.63 hectares of open space that has low useability or poor public accessibility, including wetlands, drainage reserves and streetscapes.

A breakdown of the open space types is provided in Figure 4. This breakdown highlights the City has a good proportion of sporting and recreation open space, although a large proportion is also wetlands, which may not be accessible for public use.

The more usable open space (coastal, parks, sports grounds and linear) equates to 402.56 hectares which represents 3.57 hectares per 1,000 people. This is comparable with recent new development area planning which suggests around 3.5 hectares per 1,000 people for recreation and sporting open space (generally excluding natural areas and drainage) is a suitable minimum provision.

The findings suggest that generally open space in the City of Port Adelaide Enfield should be retained. Some areas have a lack of open space as shown on Map 1 and there could be a need for land acquisition (where an opportunity exists) or enhancement of existing open space in these areas. Council could also advocate to the State Government for the retention of government owned land for public use where appropriate.

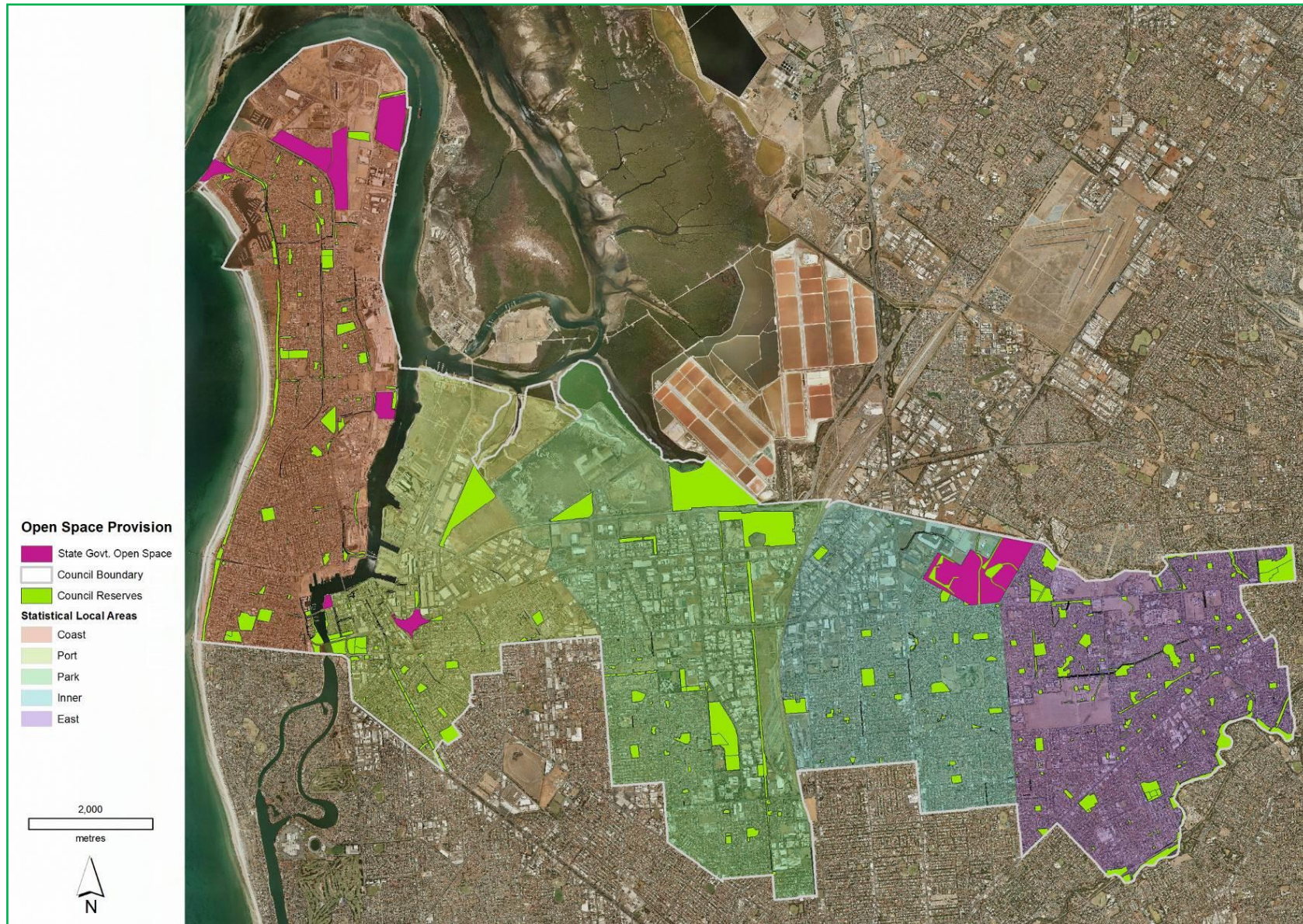
Figure 4: City of Port Adelaide Enfield Open Space Provision by Type

Open Space Type*	Hectares	Hectares Per 1,000**
Wetlands (Range Wetlands, Magazine Creek Wetlands and Barker Inlet Wetlands)	173.42	1.55 ha/1,000
Sporting Open Space (reserves with sporting facilities such as ovals, soccer pitches, outdoor courts, clubrooms)	173.87	1.54 ha/1,000
Recreation Park (informal recreation focus with play spaces, picnic areas, areas for walking and exercise)	132.63	1.18 ha/1,000
Linear Open Space (corridors of land that can support walking and bike riding such as River Torrens Linear Park, Coast Park and Dry Creek)	60.15	0.53 ha/1,000
Streetscape (street medians and verges that provide amenity such as the median along Port Road)	59.72	0.53 ha/1,000
Drainage (land with drainage as a primary role such as drainage channels and detention basins)	28.49	0.25 ha/1,000
Coastal Open Space (including natural coastal vegetation and dunes)	26.12	0.23 ha/1,000
Natural Areas (areas with native vegetation and habitat such as Folland Park, excludes coastal natural areas)	9.79	0.09 ha/1,000
TOTAL	664.19 hectares	5.89 ha/1,000

* Presented in order of open space amount rather than priority

** Hectare / 1,000 people figure is based on the 2011 population of 112,812

Map 1: Open Space Provision



Open Space Provision (continued)

As shown in Figure 5 the Inner Statistical Local Area (SLA) has less open space per capita (2.57 hectares per 1,000 people) and includes less usable open space (2.43 hectares per 1,000 people) than the other SLAs. In addition, the Park and Port SLAs do not have an overly high provision of usable open space (3.89 and 4.06 hectares per 1,000 people respectively). This reinforces the need to address the gap in provision in these areas.

Figure 5: City of Port Adelaide Enfield Open Space by Statistical Local Area

Statistical Local Area (SLA)	Total Open Space Provision*	Usable Open Space**
Coast 28,560 population	130.58 ha 4.57 ha / 1,000	98.79 ha 3.46 ha / 1,000 people
Port 10,776 population	88.39 ha 8.20 ha / 1,000	33.05 ha 3.07 ha / 1,000 people
Inner 21,559 population	55.42 ha 2.57 ha / 1,000	52.49 ha 2.43 ha / 1,000 people
Park 17,164 population	222.68 ha 12.97 ha / 1,000	66.83 ha 3.89 ha / 1,000 people
East 34,755 population	167.12 ha 4.81 ha / 1,000	151.40 ha 4.36 ha / 1,000
Total 112,812	664.19 5.89 ha / 1,000 people	402.56 3.57 / 1000 people

* Includes less useable open space such as drainage reserves, road reserves, road closures and wetlands.

** 'Usable open space' is open space that is suitable for community use and may include sporting open space, coastal open space, recreation parks and linear open space.

Specifically, open space gaps in residential areas are located in parts of:

- Semaphore, Exeter, Birkenhead, Largs Bay and Taperoo
- Rosewater, Wingfield and Mansfield Park
- Croydon Park and Devon Park
- Kilburn and Blair Athol
- Broadview, Greenacres and Hampstead Gardens
- Hillcrest and Valley View

As shown in Figure 6 and Map 2, the City of Port Adelaide Enfield has a large proportion of regional and district open spaces and good sized parcels of land spread across the City.

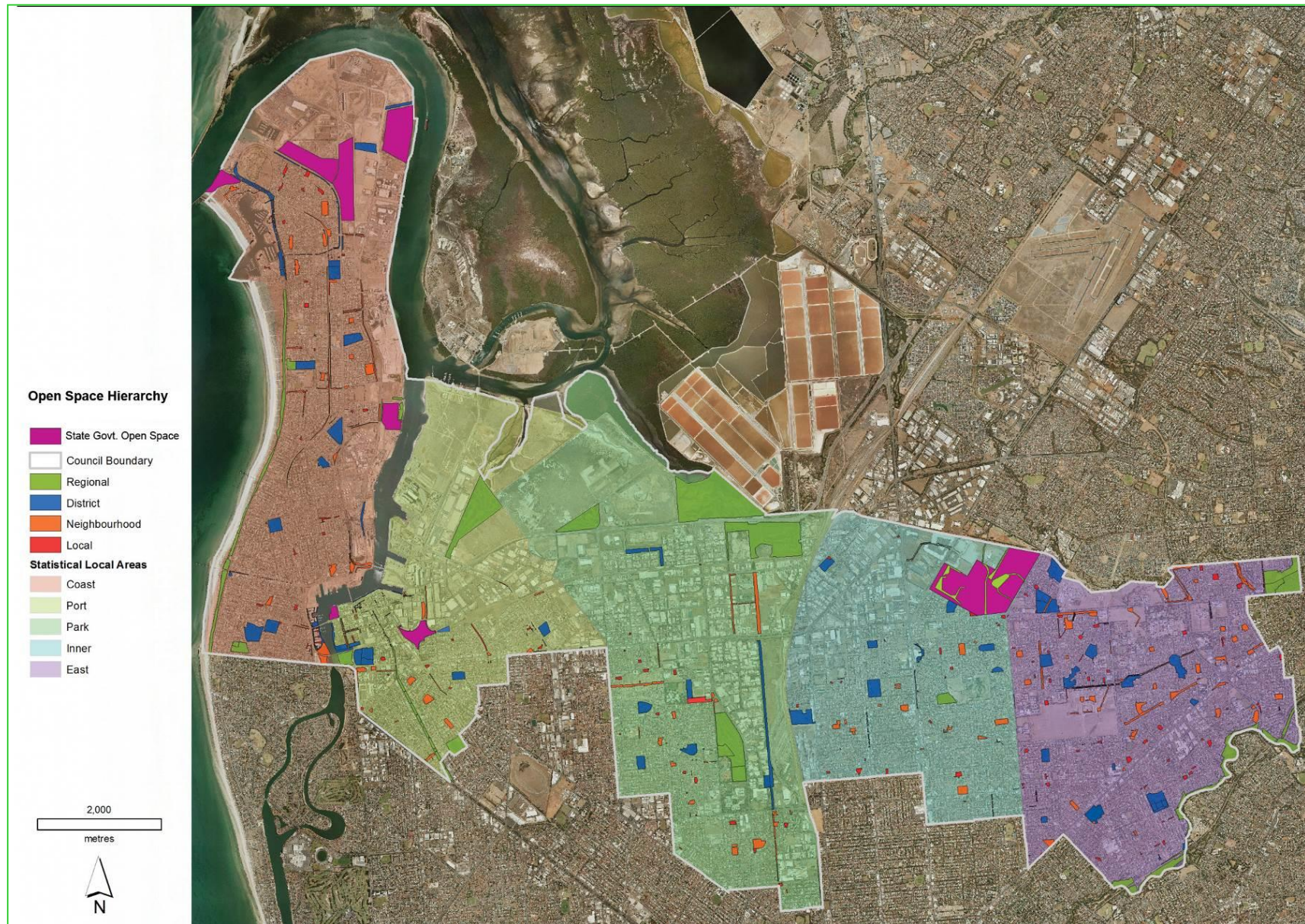
Figure 6: Open Space Hierarchy Breakdown

Open Space Hierarchy	Hectares	Hectares Per 1,000*
Regional	276.56	2.45 ha/1,000
District	225.27	2.00 ha/1,000
Neighbourhood	128.85	1.14 ha/1,000
Local	33.51	0.30 ha/1,000

* The hectare / 1,000 people figure is based on a 2011 population of 112,812.

A hierarchy framework with definitions is provided in the Guidelines Report (Report 3).

Map 2: Open Space Hierarchy



Community Needs

The 2011 Census data shows that the City of Port Adelaide Enfield had a population of 112,812 people, which is expected to increase to around 124,000 by 2016. The population is diverse with increasing numbers of young people and children, a strong multi-cultural character with 30.53% of the population born overseas and 2,720 Indigenous people. Families with children have been increasing over recent years. The City also has a relatively large number of people living alone (30.6%). Some areas display lower socio-economic characteristics, for example parts of the Port, Inner and Park Statistical Local Areas (SLAs) while other areas present as average and higher socio-economic, particularly parts of the East and Coast SLAs.

A population of this size and diverse character justifies a range of open space types and sport and recreation activity opportunities. Families and children will require sports facilities and recreation parks with play and other activity opportunities and the middle age and older groups will require walking and bike paths and lower impact sporting opportunities. All age groups and family types could have an interest in entertainment opportunities including events and markets. Recreation opportunities that are affordable or free will be a requirement for a large proportion of the population and various cultural groups may require support to participate in recreation activities, particularly organised sport, to overcome language, religious and cultural constraints. Strong demand for open space that supports informal games of sport and recreation is evident in areas where there are larger proportions of different cultural groups.

The importance of open space and recreation to the community is a key finding in two recent surveys: the 2008 Square Holes survey and Council's 2012 Community Survey. These surveys identified a range of particular needs including:

- Strong use of parks, beaches and sports grounds (highlighting the importance of providing quality facilities for these types of open space).
- Demand for play spaces and exercise opportunities.
- Demand for tracks, pathways and places for walking and cycling, including places to walk dogs.
- A desire for places for Aboriginal and Torres Strait Islander people to meet and celebrate and share their culture, including gathering and event spaces.

Key Issues, Gaps and Opportunities

The City of Port Adelaide Enfield has undertaken various projects and works over past years to improve the quality and function of open spaces and is committed to achieving a good standard of maintenance. However, as would be expected with a large number of parks and reserves across the City, there are some gaps, issues and opportunities for enhancement.

The issues, gaps and opportunities for open space and related facilities are outlined in the Background Report (Report 1). A summary of the main findings is provided below.

Topic	Key Findings
Quality and Function	There is potential to improve the quality and function of a number of parks and sports grounds across the City, and particularly in the Inner, Park and Port SLAs. The improvements to key parks would ideally be guided by Master Plans.
Sports Field Demand	There is demand for additional sports fields and ovals, including for soccer even though there is a relatively large number of soccer pitches in the City (28 pitches).
Recreation Destinations	The provision of recreation destinations is limited and where destinations exist there is often potential for enhancement. This includes opportunities to enhance coastal destinations and significant existing or potential major recreation parks, as well as the potential to create smaller destinations that support neighbourhoods.
Recreation and Sport Facility Provision	Recreation and sport facilities are lacking in some SLAs. In particular, there is a gap in provision in the Port, Park and Inner SLAs including for play spaces, basketball courts (practice and full size), tennis courts, soccer practice goals and exercise equipment.

Key Issues, Gaps and Opportunities (continued)

Topic	Key Findings
Innovative Play Spaces	Higher level creative and innovative play spaces are limited in the City of Port Adelaide Enfield and opportunities could be considered as part of the development of recreation destinations.
Youth Facilities	There are limited youth facilities across the City and no dedicated BMX tracks are provided, although skate/BMX parks are provided at Osborne, Regency Park and Semaphore. Increased activity opportunities for older children and young people should be considered in general.
Event Spaces	Event spaces are limited within the Port and Inner SLAs and there is potential to enhance the quality and scope of the existing event spaces across the City. This includes the need to provide gathering and event places that support multi-cultural and Aboriginal and Torres Strait Islander people.
Dogs in Open Space	There is demand for a dedicated off leash dog area in the coastal SLA in addition to the dog parks provided in the Inner and Eastern SLAs.
Linear Connections	Opportunities exist to strengthen the linear connections and associated pathways and facilities. This includes enhancing settings within linear parks including the River Torrens Linear Park, Coast Park and along Dry Creek.
Natural Areas	The provision of natural areas is limited and this increases the importance of retaining and protecting existing natural areas and establishing other landscapes to create 'natural' settings.
Stormwater and Drainage	There is potential to enhance the character and function of drainage areas and stormwater management within open space.
Streetscapes	Streetscape enhancements should be focused along major roads and along streets that provide linkages to key recreation parks and sports grounds. Enhancements should improve the visual quality and function of the public domain.
Biodiversity	There is potential to increase biodiversity and habitat value within open space and through streetscapes. The accessibility and usability of these areas such as the wetlands could also be improved.
Art and Culture	There is potential to enhance the provision, quality and uniqueness of public art and cultural definition including through landscapes and public realms. This includes using public art, landscape and urban design to reflect Aboriginal and Torres Strait Islander culture.



THE STRATEGY FRAMEWORK

The Strategy Components

The Open Space Plan 2013 provides a direction for the future provision, enhancement and management of open space in the City of Port Adelaide Enfield. The Plan includes broader strategic directions as well as specific strategies and actions that collectively aim to address the needs, gaps, issues and opportunities identified through the open space planning.

In particular, this Strategy Report includes:

- 'Themes of importance'
- Principles for open space provision, development and management
- Broad directions for each Theme with a rationale for each direction
- Strategies and actions that support each theme

Collectively the Plan components provide a clear direction for the next 5-10 years and a sound basis for allocating resources and seeking grant funding to achieve desired outcomes and contribute to the social, environmental and economic advancement of the City of Port Adelaide Enfield.

Figure 7: The Strategy Components



Open Space Principles

Ten overriding Open Space Principles have been developed for the City of Port Adelaide Enfield as part of the framework to guide open space planning, development and management. The principles are outlined below.

1. The City of Port Adelaide Enfield will provide an equitable spread of good quality, diverse and appealing open spaces that contribute to the liveability and visitor appeal of the City.
2. Open spaces will have different levels of quality and development in accordance with open space type and hierarchy, as part of a targeted and realistic approach to meeting community needs.
3. The City will provide quality recreation destinations and sports grounds that support a diversity of activities and appeal to the wider community and visitors.
4. Diverse recreation activity opportunities will be provided to support diverse community needs. This includes family and recreation oriented open spaces that support informal as well as organised activities.
5. Recreation, sporting facilities and infrastructure within open spaces will be designed to be functional, accessible and affordable to support community use and enhance amenity.



6. Natural areas will be protected and enhanced and opportunities for improving biodiversity and habitat areas will be strengthened across the City.
7. Cultural diversity, heritage and creativity will be supported and promoted through creative design, event and display spaces, public art, interpretation and other features and activities within open space.
8. Open space will be well maintained and managed to ensure safe and appealing spaces for community activity.
9. Programs and events will be facilitated and supported to achieve vibrant open spaces and connected communities.
10. Open space and the public realm within the Port Centre will be developed as a critical part of the progressive regeneration of the City of Port Adelaide.





Open Space Themes

Six 'Themes of importance' have been identified through the open space planning. These Themes include:

Theme 1: Balanced Provision and Quality

Theme 2: Defined Destinations

Theme 3: Diverse Sports Opportunities

Theme 4: Connected and Active Communities

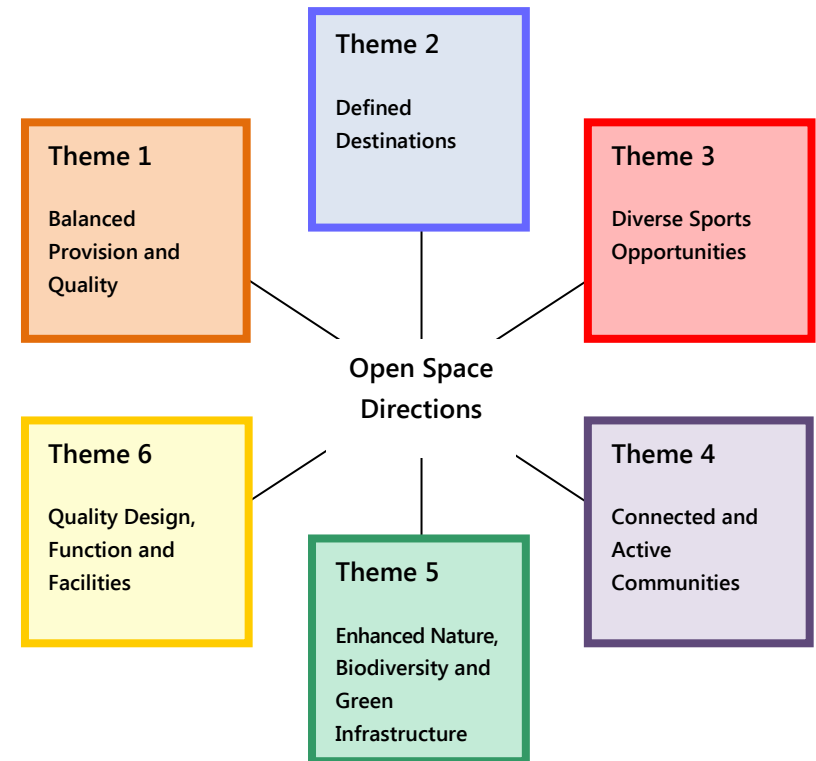
Theme 5: Enhanced Nature, Biodiversity and Green Infrastructure

Theme 6: Quality Design, Function and Facilities

The Themes indicate the priorities relating to open space in the City of Port Adelaide Enfield and collectively address the needs, issues, gaps and opportunities associated with all aspects of open space.

Some actions will relate to various open space sites or facilities and as such the priorities could vary, e.g. from high to medium. In these instances the specific priorities would be identified by Council.

Figure 8: Themes of Importance



The Theme Directions

Strategic directions are provided below for each of the six themes and a rationale is included for each direction. The Directions indicate the priorities for Council and provide a framework for the strategies and actions.

Theme 1: Balanced Provision and Quality	Theme 2: Defined Destinations	Theme 3: Diverse Sports Opportunities
<p>Aim to achieve a balanced provision of quality open space across the City through open space improvements and by addressing gaps in provision, with a particular focus on the Park, Inner and Port Statistical Local Areas.</p>	<p>Establish a spread of quality and distinctive recreation destinations across the City that collectively provide an activity and social focus for all people in the community. This includes strengthening the destination value of the foreshore and The Port Centre.</p>	<p>Continue to provide for and support a diversity of good quality sports facilities and activity opportunities across the City, including casual/informal participation opportunities.</p>
<p>Rationale: Some areas in the City of Port Adelaide Enfield are lacking open space or have access to relatively poor quality open space. This is particular an issue for the Port, Park and Inner SLAs. There would ideally be some additional sports grounds to meet high community demands.</p>	<p>Rationale: A spread of accessible recreation destinations would enable resources to be targeted to priority parks and reserves and ensure quality recreational places for the community. There is evidence that people will travel to higher level open space providing it is accessible. The Port Adelaide Centre is a significant place that justifies a focus on quality open space and public realm.</p>	<p>Rationale: Sports participation is strong in the City of Port Adelaide Enfield and sport contributes to community building and reducing social issues (crime, drugs, depression, aggression). As such, there is justification to continue to support sports participation through quality facilities and activity opportunities.</p>

Theme 4: Connected and Active Communities

Broaden the opportunities for the community to be physically active and socially and culturally connected including through strengthened linear connections and streetscapes, and creating diverse activity opportunities within open spaces.

Rationale:

Linear parks, connections and streetscapes support walking and bike riding which are high participation activities.

There is also potential to increase the diversity of activity opportunities, including play and youth oriented activities and events and community participation programs within open space. Supporting and increasing activity opportunities will contribute to the health and wellbeing of the community.

Theme 5: Enhanced Nature, Biodiversity and Green Infrastructure

Conserve and enhance natural open space and strengthen the biodiversity, habitat value and function of natural and constructed landscapes and green infrastructure provision (stormwater, drainage, streetscapes).

Rationale:

The City of Port Adelaide Enfield incorporates a number of reserves with significant biodiversity value such as the River Torrens Linear Park, Dry Creek and Folland Park, and there is potential to strengthen the biodiversity and habitat value of these and other reserves through appropriate enhancement and management. In addition, there is potential to increase the value and function of streetscapes and other green infrastructure including through WSUD (Water Sensitive Urban Design) and wetlands.

Theme 6: Quality Design, Function and Facilities

Continue to enhance the quality, design and function of open spaces through appropriately developed and well managed and maintained facilities and infrastructure.

Rationale:

Council is already committed to maintaining open space to a good quality and ensuring the appropriate development of open space.

An ongoing commitment to designing and managing open space to a good standard is required to ensure the community benefits from quality and functional open space.

“While spaces are inequitably distributed and used differently, people seem to value similar qualities in outdoor space...they value clean air, trees, natural landscapes, places that make them feel better, safe places for their children to play, and places to walk and sit outside”

Clare Cooper Marcus and Carolyn Francis, *People Places*, 2nd ed., 1998:89 citing a study of Seattle's open spaces by Tuttle, 1996



STRATEGIES AND ACTIONS

Theme 1: Balanced Provision and Quality

The Context

Whilst The City of Port Adelaide Enfield has a good amount of open space (684.74 hectares) including adequate provision of recreation and sporting open space, some areas are lacking parks and others have relatively poor quality open space. This is particularly an issue for the Park and Inner Statistical Local Areas (SLAs). Opportunities for balancing the provision and quality of open space should be considered to ensure equity across the City.

Although there are 29 sporting complexes (plus three golf courses and one driving range) totalling 171.94 hectares in the City, most sports fields experience high usage and demand for additional fields is increasing. Opportunities for establishing additional sportsgrounds should therefore be considered, including the potential for partnerships with schools.

The Direction

The Direction for the Theme 'Balanced Provision and Quality' is as follows:

Aim to achieve a balanced provision of quality open space across the City through open space improvements and by addressing gaps in provision, with a particular focus on the Park, Inner and Port Statistical Local Areas.

Theme 1: Balanced Provision and Quality

Strategies and Actions for Theme 1: Balanced Provision and Quality

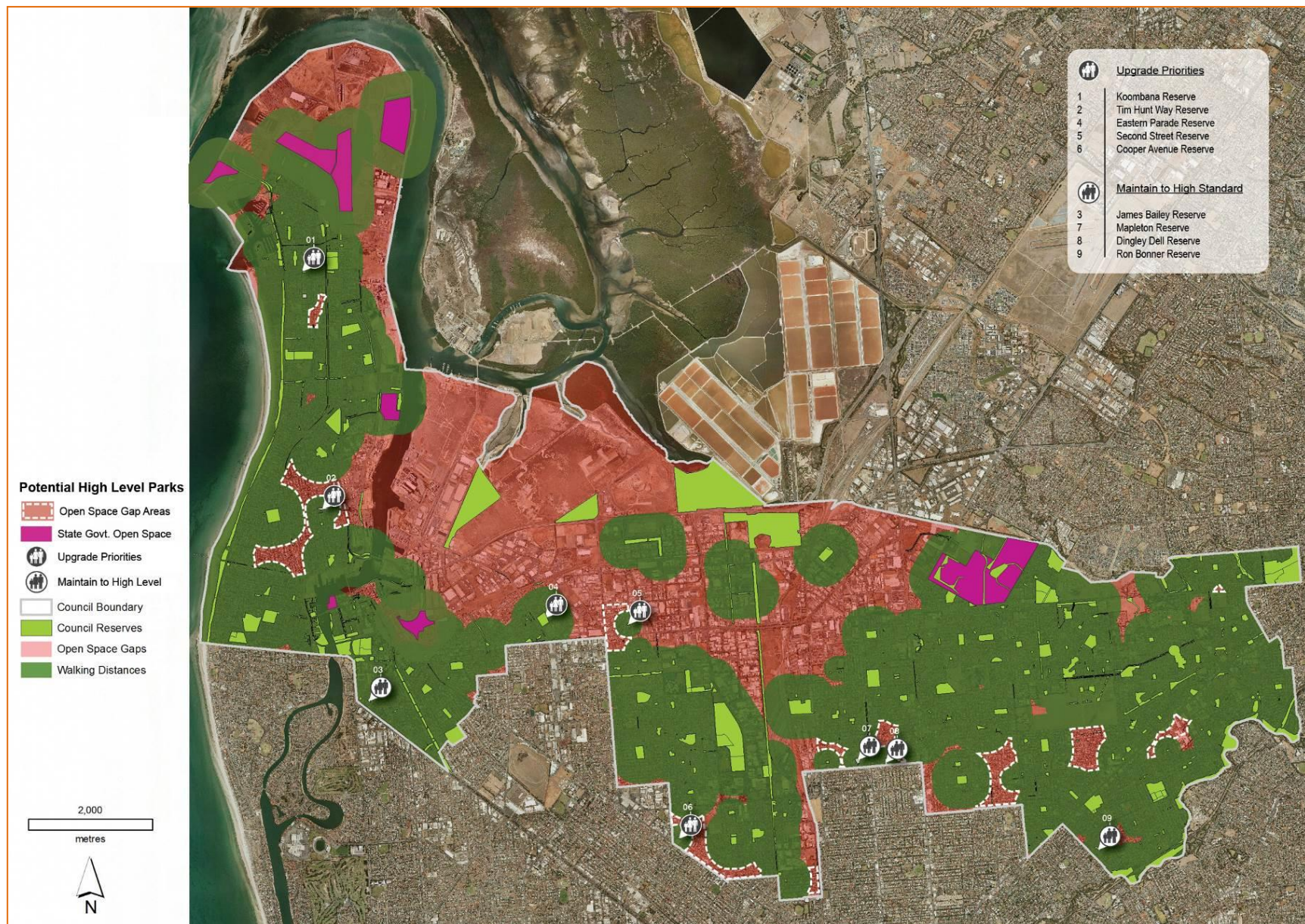
Topic	Strategy	Actions	Open Space Type	Priority
Hierarchy Approach	1.1 Adopt a hierarchy approach to open space development and management through the development and promotion of a hierarchy framework.	1.1.1 Adopt the hierarchy framework provided in Appendix 2.	All types	High
		1.1.2 Develop and manage open space in accordance with the adopted framework.	All types	High
Equitable Quality	1.2 Increase the quality of open space in the Park, Inner and Port Statistical Local Areas (SLAs).	1.2.1 Undertake a program of reserve upgrades identified as part of the Open Space Plan 2013. Place a particular focus on open space that supports recreation, play and sporting use and higher level open space including regional, district and local destinations.	All types, with a particular focus on Recreation Parks and Sports Grounds	High to Medium
Gaps in provision	1.3 Address the gaps in open space provision through improving the quality of existing open space and where possible acquisition of land.	1.3.1 Upgrade key parks and reserves in areas where there is a shortage of open space, based on the 'open space gap areas' defined in Map 3 and the 'higher level parks in gap areas listing' provided in Figure 9.	Recreation Parks	High to Medium
		1.3.2 As opportunities arise and where feasible, consider land acquisition where there is a lack of open space and strong community demand e.g. through acquisition of surplus State Government land or other available land including private land where appropriate.	Recreation Parks	Medium to Lower
		1.3.3 Ensure an appropriate provision of usable and functional open space is provided within future new development areas and designed in accordance with the Open Space Guidelines.	Recreation Parks Sportsgrounds Linear Open Space	High

Theme 1: Balanced Provision and Quality (continued)

Strategies and Actions for Theme 1: Balanced Provision and Quality

Topic	Strategy	Actions	Open Space Type	Priority
Additional Sport and Recreation Opportunities	1.4 Facilitate opportunities for school sites to be available for sport and recreation.	1.4.1 Respond to opportunities for shared-use of school facilities for sport and recreation use where such shared use would assist to fill the gap of open space provision consistent with Council's Open Space Guidelines.	Sports Grounds	Medium
Future Development Areas	1.5 Plan for quality and functional open space within future development areas.	1.5.1 Require developers to prepare master plans for new development areas to identify open space provision opportunities that are consistent with Council's Open Space Guidelines (developed as part of the Open Space Plan 2013).	All types, with a particular focus on Recreation Parks	High to Medium

Map 3: Potential Higher Level Parks in Open Space Gap Areas



Theme 1: Balanced Provision and Quality (continued)

Figure 9: Suggested Higher Level Parks in Gap Areas (Existing and Potential)

Parks and Reserves	SLA	Opportunity
Koombana Reserve	Coastal	Enhanced quality and activity opportunities
Tim Hunt Way Reserve	Coastal	Enhanced quality and activity opportunities
James Bailey Reserve	Port	Retain as quality park (recently upgraded)
Eastern Parade Reserve	Port	Master Plan and improve quality and recreation facilities
Second Street Reserve	Park	Enhanced quality and activity opportunities
Blair Athol Reserve	Inner	Enhanced quality and activity opportunities
Mapleton Reserve	Inner	Retain as quality park (recently upgraded)
Dingley Dell Reserve	Inner	Retain as quality park (recently upgraded)
Ron Bonner Reserve	East	Enhanced quality and activity opportunities

Further investigations will be required to determine specific opportunities within individual reserves. Some of the parks have already been developed to a high standard and will not require further improvements, while others will justify enhancement through further works.

Some of the parks are also identified as secondary destinations (refer Map 4) while others are local parks that have been reclassified as 'neighbourhood' due to a lack of larger open spaces in the area, thus placing higher importance on otherwise smaller parks.



Theme 2: Defined Destinations

The Context

Whilst the City of Port Adelaide Enfield has some good sized parks and sportsgrounds and a number of these have been upgraded over recent years, there has been a lack of planning for key destinations across the City and a lack of master planning in general. Most of the existing recreation destinations are located on the coastline and destinations tend to be lacking in the other Statistical Local Areas or are not well planned. A destination justifies quality, unique and integrated facilities that have a strong sense of identity and purpose.

Specifically, higher level and innovative play spaces and quality event and gathering places are lacking and there is potential to enhance some major open spaces to create a number of high profile and high quality recreation parks that have the capacity to draw people from across the Council area.

As it is not always possible for people to travel to a major destination, consideration should also be given to establishing a spread of local destinations that are easily accessible, good quality and appealing. This will enable a more equitable and targeted approach to upgrading local and neighbourhood open space.

The Direction

The Direction for the Theme 'Defined Destinations' is as follows:

Establish a spread of quality and distinctive recreation destinations across the City that collectively provide an activity and social focus for all people in the community.

Theme 2: Defined Destinations

Strategies and Actions for Theme 2: Defined Destinations

Topic	Strategy	Actions	Open Space Type	Priority
Coastline Enhancement	2.1 Strengthen the destination value of the coastline through the creation of quality recreation destinations and enhancements to Coast Park.	2.1.1. Develop a master plan for the Semaphore Foreshore to achieve a higher quality and more functional coastal destination, through improvements to character, connection and quality of facilities and spaces.	Coastal Open Space	High
		2.1.2 Strengthen the coastal connections to White Hollow Reserve and Roy Marten Park through pathways and signage and establish Roy Marten Park as a key recreation destination. Innovative play with a nature based theme could be considered along with activity and social gathering and event opportunities.	Coastal Open Space	High
		2.1.3 Enhance the recreation value of the entire foreshore area along Lady Gowrie Road through strategically located and sensitively designed play features, picnic settings shelters and seating.	Coastal Open Space	Medium
		2.1.4 Undertake improvements to Coast Park including the development of recreation nodes along Coast Park, landscape to provide some shade at viewing areas, seating, shelters, interpretation and public art.	Coastal Open Space	Medium
Primary (Regional) Destinations	2.2 Establish and upgrade primary destinations distributed equitably across the City of Port Adelaide Enfield.	<p>2.2.1 Further enhance and establish primary destinations across the City to provide innovative and creative play spaces, family activity opportunities, picnic and gathering spaces, and public art and unique features. Reserves that warrant further planning and enhancement to be established as primary destinations include:</p> <ul style="list-style-type: none"> - Semaphore and Largs Foreshore Reserves (quality) - Roy Marten Park (quality and activity) - Western Region Reserve (quality and activity) - Regency Park Reserve (function) - L J Lewis Park (activity and function) - Pitman Park (RTLP) (activity) <p>The rationale and opportunities for these reserves is provided in Figure 10.</p>	Recreation Parks Coastal Open Space	High to Medium (refer Figure 10)

Theme 2: Defined Destinations (continued)

Figure 10: Opportunities for Primary (Regional) Destinations

Potential Regional Destinations	Specific Opportunities	Rationale (for Destination and Opportunities)	Suggested Priority	Current Status
Semaphore Foreshore Reserve	Regional destination in coastal setting Regional play potential with unique setting and play features Event space linked to existing buildings and grassed areas De-clutter existing development and enhance quality, accessibility and function (e.g. lighting)	Foreshore High profile site Large area Existing destination	High	Existing Destination
Roy Marten Park	Regional destination with strong family activity and physical activity focus Youth, play, exercise, picnics, gathering spaces, paths, shelters, potential off leash dog area	Large park Link to foreshore Existing facility focus with potential for enhancement	High	Potential Destination
Western Region Reserve	Potential regional destination Regional Play Event Space Cultural focus (potential indoor and outdoor spaces and interpretation linked to Aboriginal heritage) Link to Port River for water based activities	Large site High profile location with link to Port River Links to other open space Destinations are lacking in Port Central area Indigenous heritage focus	High	Potential Destination
L J Lewis Park	Regional destination Play, dog park, picnic, recreation activity focus Event space Increased activity opportunities, enhanced function and higher profile	Large park with pleasant treed setting Underutilised and not overly functional Area is lacking recreation destinations	High	Existing Destination
Pitman Park (RTLTP)	Regional destination Regional Play and picnic settings Link to amenities	Large site Link to RTLTP (regional linear park) Lacking activity opportunities in the area	High	Potential Destination
Regency Park Reserve	Regional destination Regional Play (existing) Increase passive surveillance and event focus	Existing regional recreation focus Limited quality open space in the area Potential to broaden scope of the park and improve passive surveillance and security	Medium	Existing Destination

Theme 2: Defined Destinations (continued)

Strategies and Actions for Theme 2: Defined Destinations

Topic	Strategy	Actions	Open Space Type	Priority
Secondary Destinations	2.3 Establish a spread of 'secondary destinations' linked to district or neighbourhood higher quality parks.	2.3.1 Plan for and enhance key district and neighbourhood parks to create localised and accessible destinations for family activity, gatherings, play and youth activity. Potential parks and the rationale and specific opportunities are outlined in Figure 11 and shown on Map 4.	Recreation Parks Sports Grounds	High to Medium (refer Figure 11)
State Government Destinations	2.4 Continue to support the development and enhancement of destinations by the State Government.	2.4.1 Where appropriate encourage and support the State Government to establish and maintain key recreation destinations such as Cultural Park, Biodiversity Park, Garden Island, Mutton Cove Conservation Park, former Gillman Railyards and Harts Mill Reserve.	Recreation Parks Natural Areas	High to Medium
		2.4.2 Support and encourage the establishment and ongoing maintenance of the following reserves as primary recreation destinations. <ul style="list-style-type: none"> - Harts Mill Reserve, The Port Centre - Biodiversity Park, Outer Harbor - Kardi Yarta Cultural Park, Outer Harbor 	Recreation Parks	High to Medium
		2.4.3 Work with the State Government to realise the rehabilitation of rail corridors (surplus to State Government requirements) for recreation uses.	Linear Open Space	Medium
Quality and Innovative Play Spaces	2.5 Establish regional and district play spaces with a strong focus on innovative, creative and diverse play values.	2.5.1 Plan for three to four regional play spaces within regional destinations. These play spaces should include innovative, creative and unique play opportunities and the potential for natural play and naturescapes ¹ . Reserve opportunities for consideration include: <ul style="list-style-type: none"> - Semaphore Foreshore Reserve (enhancement of existing) - Western Region Reserve (consider as part of future master planning) - Regency Park Reserve (existing play space) - Pitman Park (RTLP) The rationale and opportunities are provided in Figure 10.	Recreation Parks Coastal Open Space	High to Medium (refer Figure 10)
		2.5.2 Strengthen the natural play value of all regional and district play spaces through landscape and innovative design.	Recreation Parks	High

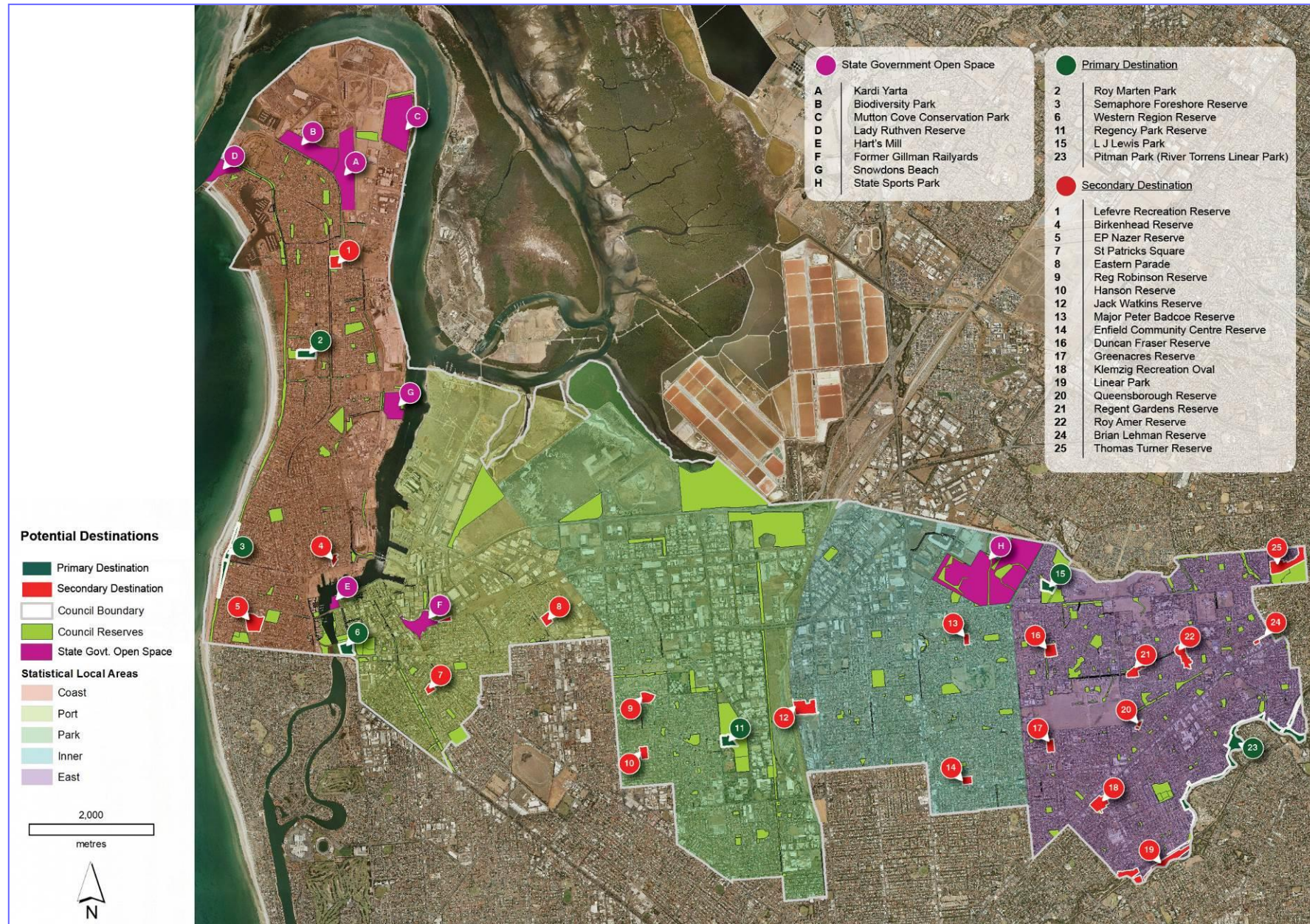
¹ Places for children to connect with nature and learn to appreciate the unique qualities of the natural environment.

Theme 2: Defined Destinations (continued)

Figure 11: Opportunities for 'Secondary Destinations' (Key District and Neighbourhood Parks)

Potential Destinations	Specific Opportunities	Suggested Priority
Lefevre Recreation Reserve	Promote the reserve facilities for events and family activities Maintenance focus (recently upgraded)	High
Eastern Parade Reserve	Prepare master plan to guide improvements	High
Hanson Reserve	Prepare master plan to guide improvements	High
Klemzig Recreation Oval	Upgrade in progress	High
Linear Park (other than Pitman Park which is proposed as a regional destination)	Identify specific sites and plan for improvements	High
EP Nazer Reserve	Maintenance focus (recently upgraded)	Medium
Birkenhead Reserve	Increase recreation and aesthetic value	Medium
St Patricks Square Reserve	Recreation and family focus Improvements scheduled in 2013/14 capital works program	Medium
Reg Robinson Reserve	Potential enhancement of basin area as part of improved Water Sensitive Urban Design initiatives	Medium
Jack Watkins Memorial Reserve	Maintenance focus Promotion for events and casual sports use Pedestrian crossing over Churchill Road (proximate to the park entrance) to be provided by State Government	Medium
Major Peter Badcoe Reserve	Concept plan required to guide improvements	Medium
Enfield Community Centre Reserve	Potential youth and family space Potential casual sports area	Medium
Greenacres Reserve	Upgrade in progress	Medium
Duncan Fraser Reserve	Prepare master plan to guide improvements	Medium
Queensborough Reserve (adjacent to Hillcrest Community Centre)	Upgrade of play space	Medium
Regent Gardens Reserve	Maintenance focus	Medium
Roy Amer Reserve	Maintenance focus	Medium
Brian Lehman Reserve	Upgrade in progress	Medium
Thomas Turner Reserve	Enhancement of sporting and environmental value	Medium
Former Gillman Railyards	Liaison with State Government on potential enhancement (recognising this is in the ownership of State Government and out of Council control)	Lower

Map 4: Primary and Secondary Destination Opportunities



Theme 2: Defined Destinations (continued)

Strategies and Actions for Theme 2: Defined Destinations

Topic	Strategy	Actions	Open Space Type	Priority
Connections to the Water	2.6 Strengthen and establish connections between land and water through destinations.	2.6.1 Enhance the quality of reserves that link to existing or potential water activities such as Western Region Reserve, Mangrove Cove and foreshore areas. Through these and other sites aim to achieve good access to the water and increased water activity opportunities.	Coastal Open Space Recreation Parks	High
Port Centre as a Destination	2.7 Provide quality open spaces and public realm that contribute to the Port Centre being a key destination place.	2.7.1 Develop a number of key destinations within the Port Centre using actions 2.5.2, 2.5.3 and 2.5.4 as a guide. These areas should include high quality paving, seating, tree planting, lighting and landscape, shade and the provision of public art and cultural representation.	Linear Open Space Public Realm Recreation Parks	High to Medium
		2.7.2 Plan for and develop a continuous pathway that extends from Bower Road to Ocean Steamers Road with water front access that includes the following reserves: <ul style="list-style-type: none"> - Western Region Reserve - Joyce Snadden Reserve - Harts Mill Redevelopment (Renewal SA) - Wharf Number 1 - Port Centre area These areas should include activation of the water's edge, seating, lighting, congregation areas, event spaces, landscape areas, shade, playspaces and public art.	Linear Open Space Public Realm	High to Medium
		2.7.4 Retain or develop the following streetscapes and key connections within the Port Centre. <ul style="list-style-type: none"> - The Minories - Dale Street (upgrade has commenced) - Commercial Street North - St Vincent Street (encourage DPTI upgrade) - Old Port Gardens - Joyce Snadden Reserve Undertake the planning and progressive upgrade of these streets to deliver high quality public realms with a strong focus on the provision of social infrastructure and a refocusing of streets for people.	Linear Open Space Public Realm Streetscapes	High to Medium

Theme 2: Defined Destinations (continued)

Strategies and Actions for Theme 2: Defined Destinations

Topic	Strategy	Actions	Open Space Type	Priority
Cultural Value	2.8 Strengthen the cultural and heritage value of open space destinations.	2.8.1 Integrate opportunities for recognising and celebrating cultural and heritage value including through interpretation, art work and gathering spaces. Particular opportunities could include: <ul style="list-style-type: none"> - Western Region Reserve including opportunities for supporting and celebrating Aboriginal culture (through indoor or outdoor spaces) - Pelican Point including interpretation and recognition - White Hollow Reserve including interpretation and recognition 	Recreation Parks Coastal Open Space	High
State Government Land Opportunities	2.9	2.9.1 Support and encourage the establishment and ongoing maintenance of the following reserves as primary recreation destinations. <ul style="list-style-type: none"> - Harts Mill Reserve, The Port Centre - Biodiversity Park, Outer Harbor - Kardi Yarta Cultural Park, Outer Harbor 	Recreation Parks	High to Medium
		2.9.2 Work with the State Government to realise the rehabilitation of rail corridors (surplus to State Government requirements) for recreation uses.	Linear Open Space	Medium

Theme 2: Defined Destinations (continued)

Strategies and Actions for Theme 2: Defined Destinations

Topic	Strategy	Actions	Open Space Type	Priority
Event and Market Spaces	2.10 Establish high profile and creative event, festival and market spaces that foster community, place making, public art and other cultural animation.	<p>2.10.1 Maintain and establish 4-5 quality event spaces integrated within regional and local destinations. This will include creating spaces that support community events, performances, functions, gatherings and displays and promote local culture including Aboriginal and Torres Strait Islander culture, multi-culturalism and local heritage. Event spaces may require large grassed multi-use areas, access to utilities (power, water), lighting and links to recreation activity and spaces. Permanent display opportunities could be considered in some key locations linked to public art and interpretation. Consideration could be given to the following reserves as options for event space locations:</p> <ul style="list-style-type: none"> - Semaphore Foreshore Reserve - Lefevre Recreation Reserve (existing) - Western Region Reserve (with a particular focus on promoting Aboriginal and Torres Strait Islander culture) - Jack Watkins Memorial Reserve (existing) - L J Lewis Park (existing) - Thomas Turner Reserve - White Hollow Reserve (with a particular focus on promoting Aboriginal and Torres Strait Islander culture) <p>The specific opportunities are provided in Figures 10 and 11.</p>	Recreation Parks Coastal Open Space	High to Medium (refer Figures 10 and 11)



Theme 3: Diverse Sports Opportunities

The Context

Over the past 10 years or so the City of Port Adelaide Enfield has experienced growth in the number of younger adults (aged 25-39 years) and young children with evidence that parts of the City are becoming more family oriented, particularly in the Park and Inner Statistical Local Areas (SLAs). In addition, the City has experienced increasing multiculturalism with around 30% of the population born overseas in 2011. Both of these factors can have an impact on sport, with potential high demand for junior sports and also casual sports participation (informal games of soccer and cricket), which is an important social activity for many cultural groups.

Whilst the City has a good provision of sporting open space and facilities, including 29 sportsgrounds with 28 soccer pitches, the demand is so great for soccer that there is pressure to obtain additional soccer pitches. As the demand for competition sport outstrips supply, there are fewer opportunities for 'casual sport' and this is creating conflicts with organised sport users and resulting in a community need not being adequately met. Whilst there is a relatively good provision of outdoor courts, there is potential to establish some higher level tennis courts through consolidation and there could be a need for some additional netball courts.

The Direction

The Direction for the Theme 'Diverse Sports Opportunities' is as follows:

Continue to provide for and support a diversity of good quality sports facilities and activity opportunities across the City.



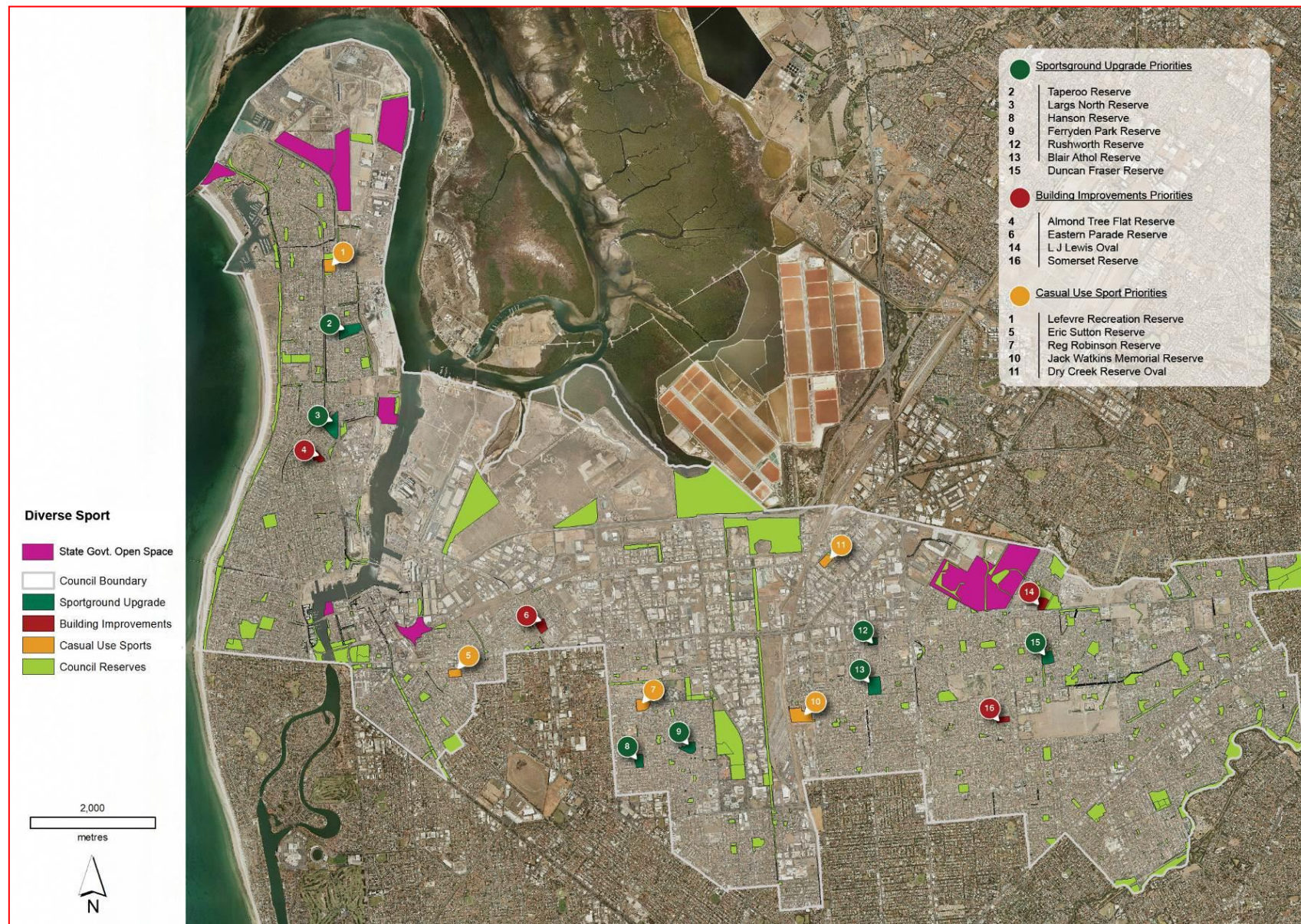
Theme 3: Diverse Sports Opportunities

Strategies and Actions for Theme 3: Diverse Sports Opportunities

Topic	Strategy	Actions *	Open Space Type	Priority
Sports Ground Development	3.1 Continue to undertake a progressive enhancement of sportsgrounds with a particular focus on the Inner and Park SLAs.	3.1.1 Undertake a review of and improvements to the following sportsgrounds with the aim to improve their function, quality and community value: <ul style="list-style-type: none"> - Hanson Reserve - Rushworth Reserve - Duncan Fraser Reserve - Largs North Reserve - Blair Athol Reserve (court, play and recreation spaces review) - Ferryden Park Reserve (reduced building footprint at the end of the useful life of the existing building) Concept or master planning may be required to guide some improvements.	Sports Grounds	High to Medium
		3.1.2 Undertake improvements to buildings linked to sportsgrounds, including club facilities and amenities in accordance with hierarchy. Give consideration to the following sportsgrounds: <ul style="list-style-type: none"> - Almond Tree Flat Reserve - Eastern Parade Reserve - Somerset Reserve - LJ Lewis Oval 	Sports Grounds	High to Medium
		3.1.3 Develop the former Taperoo Primary School site as a soccer complex following master planning and in conjunction with the potential sport and community users.	Sports Grounds	High
		3.1.4 Revisit the previous master planning for Thomas Turner Reserve and consider how the reserve can be improved to better support sport and recreation whilst managing impacts on residents.	Sports Grounds Recreation Parks	Medium

* Map 5 summarises the Diverse Sports opportunities.

Map 5: Diverse Sports Opportunities



Theme 3: Diverse Sports Opportunities (continued)

Strategies and Actions for Theme 3: Diverse Sports Opportunities

Topic	Strategy	Actions	Open Space Type	Priority
Sports Ground Usage	3.2 Manage the use and capacity of sports grounds to address over use and underuse.	3.2.1 Undertake a review of the use of sports grounds with the aim to increase the usage of sports grounds that have lower use such as Dry Creek Reserve and manage the use of grounds where there is high use.	Sports Grounds	High
Outdoor Court Provision	3.3 Improve the provision of outdoor courts through consolidation (tennis), upgrades and new courts (netball).	3.3.1 Develop a strategy for the future provision and development of outdoor courts, particularly in the Park, Inner and East SLAs. This includes identifying opportunities for consolidation, with the aim to create some higher level complexes in consultation with the various clubs. Also consider opportunities for a spread of multi-purpose community courts.	Sports Grounds	Medium
		3.3.2 Consider opportunities for establishing additional netball courts (potentially multi-use) in the Port, Inner and Park areas in consultation with Netball SA and the local associations and as part of future sportsground redevelopments.	Sports Grounds	Medium
Casual Use Sports Areas	3.4 Establish casual use community sports areas (e.g. soccer pitches, grassed areas, community courts) to support cultural groups.	3.4.1 Allocate and promote 4-5 fields and large grassed areas across the City for casual sports use, giving consideration to the following sports grounds and opportunities (for investigation): <ul style="list-style-type: none"> - Lefevre Recreation Reserve (adjoining open space) - Eric Sutton Reserve - Reg Robinson Reserve (with basin improvement to support this) - Enfield Community Centre (adjoining open space) - Dry Creek Reserve Oval (when not used for organised sport) - Jack Watkins Memorial Reserve 	Sports Grounds Recreation Parks Schools	High
		3.4.2 Promote the availability of fields and courts for casual community use through Council's web site, reserve signage and other information sources.	Sports Grounds Recreation Parks Schools	Medium



Theme 4: Connected and Active Communities

The Context

Open space connections through linear parks and pathway networks are vital for supporting and encouraging physical activity through walking, cycling, and the use of scooters, rollerblades and skate boards where appropriate. People need to have opportunities to safely pursue these activities through the provision of off road pathways, streets and linear parks. The City of Port Adelaide Enfield incorporates three main linear park connections including the River Torrens Linear Park, Coast Park and Dry Creek and maintaining and enhancing these resources will be important.

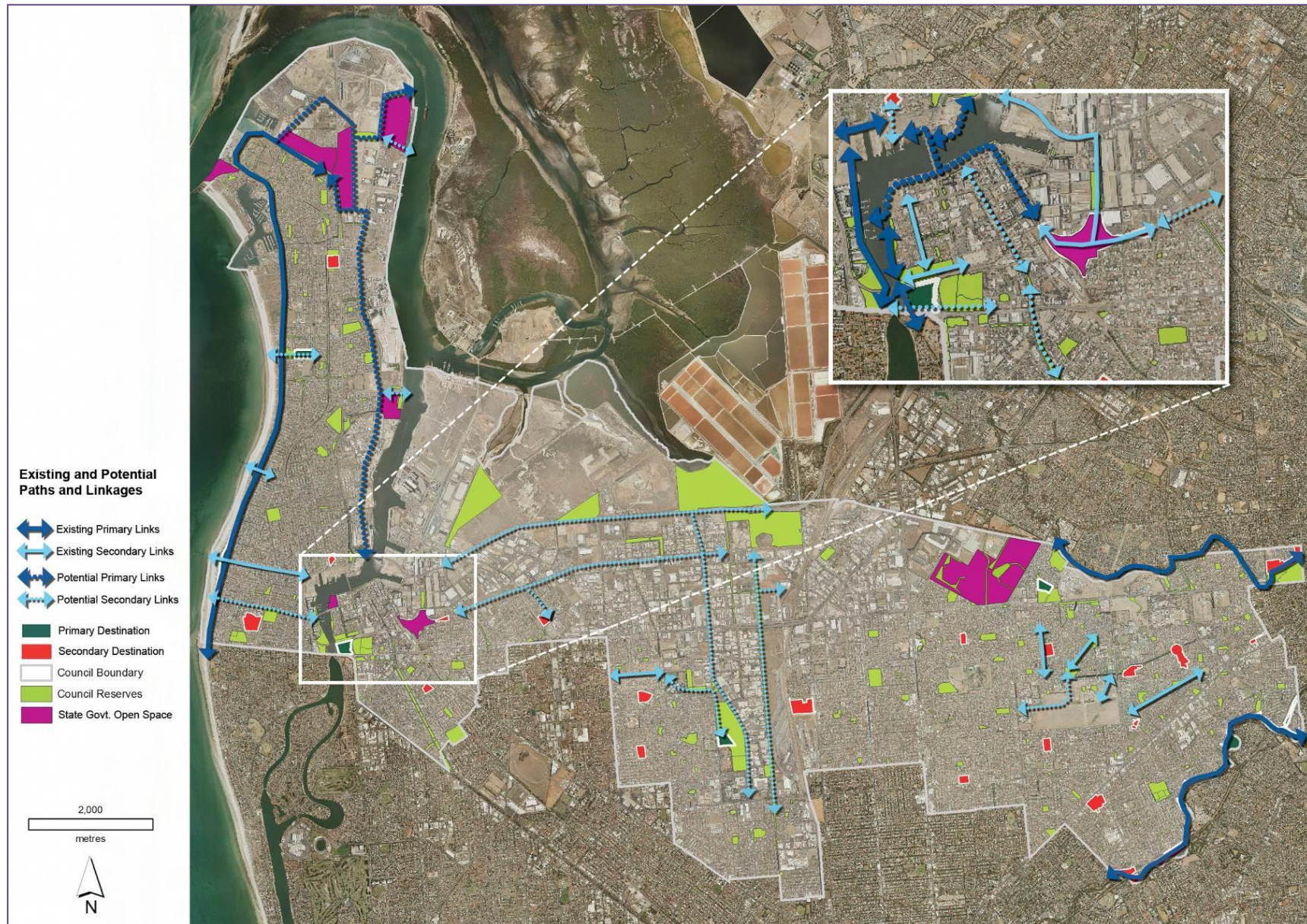
An active community can be directly attributed to the availability of a range of recreation facilities, spaces and programs, including the linear parks and pathways, play spaces for young and older children, areas to safely ride bikes and skate, exercise opportunities and through programs, services and events. A connected community also requires appealing places to socialise and experience cultural expression, and this can be provided through family and community oriented recreation open space. Whilst the City of Port Adelaide Enfield provides a diversity of recreation opportunities through its open space, there is potential to enhance the quality and scope of the open space to further contribute to achieving connected and active communities. The directions in 'Connected and Active Communities' will contribute to achieving the objectives of Council's Public Health Plan.

The Direction

The Direction for the Theme 'Connected and Active Communities' is as follows:

Broaden the opportunities for the community to be physically active and socially and culturally connected including through strengthened linear connections and diverse activity opportunities.

Map 6: Potential Primary and Secondary Trails



Theme 4: Connected and Active Communities

Strategies and Actions for Theme 4: Connected and Active Communities

Topic	Strategy	Actions	Open Space Type	Priority
Trails and Connections	4.1 Establish a network of primary and secondary trails and pathway connections with links to open space, coastal areas and the Port River.	4.1.1 Undertake improvements to the three primary trail connections in the City of Port Adelaide Enfield, being the River Torrens Linear Park, Coast Park and the Dry Creek corridor. Improvements could include pathway upgrade, tree planting for shade and amenity, seating and shelters, stop off nodes with play opportunities, opportunities for disability access to the coast and beaches, signage and interpretation and other features. Specific potential improvements to be identified through reviews of individual parks.	Linear Open Space Coastal Open Space	High to Medium
		4.1.2 Strengthen the opportunities for the public to access the Port River and coastal areas including through pathway connections, enhancements to open spaces and activity nodes along the river and coastline, and signage and interpretation.	Coastal Open Space	High
		4.1.3 Support the establishment of additional primary trail connections by State Government where feasible including: <ul style="list-style-type: none"> - A bike path along the Port River Expressway - Enhanced pedestrian / cycle path through the former Gillman Railyards site - A defined bike trail linked to Biodiversity Park and Kardi Yarta Cultural Park around Outer Harbor - A pedestrian link across the railway line between Kardi Yarta Cultural Park and Falie Reserve, providing improved access to Mutton Cove - Pedestrian access across the railway line to Western Region Park 	Linear Open Space	Medium to Lower
		4.1.4 Using Map 6 as a guide, establish a number of good quality and accessible secondary open space connections to support movement between open spaces and across the City. This could require various improvements including the development or upgrade of pathways, and the provision of trees and shade, seating and signage where appropriate. Map 6 highlights existing and proposed trail opportunities. Further investigations will be required to identify specific requirements, which then should be included in Council's capital works and maintenance programmes.	Linear Open Space	Medium to Lower

Theme 4: Connected and Active Communities (continued)

Strategies and Actions for Theme 4: Connected and Active Communities

Topic	Strategy	Actions	Open Space Type	Priority
Youth Facilities	4.2 Increase youth facility provision especially in the East, Inner and Park SLAs.	4.2.1 As part of establishing regional and local destinations, plan for a spread of facilities that support older children and young people. This could include bike areas, play spaces for older children, exercise equipment, multi-use urban spaces that cater for scooters, skateboarding, multi-use courts and mobile facilities that contribute to place making activation. Rather than create isolated youth areas, the facilities that support young people and older children should be integrated within safe and open family oriented areas and also as part of sporting open space.	Recreation Parks Sports Grounds Coastal Open Space	High to Medium (with high being in areas that are lacking facilities such as the East, Inner and Park SLAs)
		4.2.2 Investigate establishing mobile spaces and facilities suitable for youth programs and activities, e.g. portable action containers, skateable spaces, bike jumps. The spaces and facilities could be used to support events as well as day to day activities.	Recreation Parks Sports Grounds Coastal Open Space Linear Open Space	Medium
Community Courts	4.3 Provide a spread of accessible community courts across the City.	4.3.1 As part of the suggested 'outdoor courts strategy' (refer 3.3) establish a number of court facilities across the City that are available for community use and easily accessible (e.g. open at all times). This could involve increasing community access to existing courts, establishing additional multi-use courts to support diverse and affordable activities (e.g. netball, basketball, tennis, other ball games).	Recreation Parks Sports Grounds Coastal Open Space Linear Open Space	High to Medium

Theme 4: Connected and Active Communities (continued)

Strategies and Actions for Theme 4: Connected and Active Communities

Topic	Strategy	Actions	Open Space Type	Priority
Dog Parks	4.4 Provide safe and appealing spaces for people to walk dogs across the City.	4.4.1 Establish a dedicated dog park in the Coastal SLA, giving consideration to allocating part of Roy Marten Park for this use with links to park infrastructure (e.g. lighting, shelter, drinking water for dogs, seating, shade, paths).	Recreation Parks	High
		4.4.2 Continue to enhance the Jack Watkins Reserve and LJ Lewis Reserve dog parks in the City through shade, seating and other park infrastructure as appropriate.	Recreation Parks	Medium
Community Gardens	4.5 Facilitate the creation of productive landscapes including community gardens, where there is strong community interest and feasible opportunities.	4.5.1 Help guide the establishment of future community gardens by community groups using industry guidelines as a basis.	Recreation Parks	Medium
		4.5.2 Utilise industry guidelines to respond to and assess the feasibility of future requests for community gardens.	Recreation Parks	High

Theme 4: Connected and Active Communities (continued)


Strategies and Actions for Theme 4: Connected and Active Communities

Topic	Strategy	Actions	Open Space Type	Priority
Streetscapes for Communities	4.6 Improve the quality, function and amenity of streets to encourage activation by people.	4.6.1 Undertake a program of streetscape upgrade, including improvements to the amenity of streetscapes and the creation of usable public realms. Opportunities could include pathway upgrade, trees and shade, public art, plaza spaces, play and activity elements, rest stops, seating, lighting and other features that contribute to a 'walkable' and 'liveable' environment. Main streets and streets that connect to commercial centres and recreation destinations should be the main priority, particularly in relation to the Port Adelaide Centre.	Recreation Parks Sports Grounds Coastal Open Space Streetscape	Medium to Lower
Twilight Use of Open Space	4.7 Broaden twilight community activity opportunities.	4.7.1 Establish and improve lighting within reserves with high evening activity or where reserves have the potent for and would benefit from high evening activity (e.g. the foreshore).	Recreation Parks Sports Grounds Coastal Open Space Streetscape	Medium

Theme 4: Connected and Active Communities (continued)

Strategies and Actions for Theme 4: Connected and Active Communities

Topic	Strategy	Actions	Open Space Type	Priority
Events, Programs and Services	4.8 Facilitate and support events, programs and services that encourage an activated community and support the City's diverse culture.	4.8.1 Continue to assist sport and recreation groups to provide programs and services to the community through information and education opportunities, and through grant funding that contributes to sports development programs and services.	Sports Grounds	High
		4.8.2 Facilitate and support programs and services that focus on higher need groups in the community including: <ul style="list-style-type: none"> - Young people - New arrivals - Aboriginal and Torres Strait Islander people - Older people Opportunities could include the development of new and innovative programs, partnerships with agencies, schools and sport and recreation groups, grant funding, information dissemination and the promotion of programs and services.	Recreation Parks Sports Grounds Coastal Open Space Streetscape	High to Medium
		4.8.3 Facilitate and support events, festivals and markets linked to open space event areas and the public realm (main streets, plazas). Place a particular focus on creating event, market and gathering opportunities around Port Adelaide Centre including Western Region Reserve, which will contribute to revitalising this area and reinforcing Aboriginal and Torres Strait Islander culture.	Recreation Parks Sports Grounds Coastal Open Space Streetscape	High to Medium
	4.9 Promote Council's open spaces to the community	4.9.2 Promote key parks and reserve upgrades through a variety of communication methods such as Council's website, Pen2Paper newsletter and events.	Recreation Parks Sports Grounds Coastal Open Space Streetscapes	Medium



*"It may not be crowding per se that degrades us,
but a lack of relief from crowding,
a lack of open space, a lack of green,
of nature going its own way"*

Charles Little and John Mitchell, *Space for Survival*, 1971

Theme 5: Enhanced Nature, Biodiversity and Green Infrastructure

The Context

The City of Port Adelaide Enfield has a number of reserves and open spaces that provide significant biodiversity and habitat value including the River Torrens and creek lines, large parks such as Folland Park and R.B. Connolly Reserve, the Barker Inlet and large wetland areas and coastal vegetation along the foreshore. Some of these areas, and particularly the wetlands, are not managed by Council and therefore it is difficult to influence their quality, potential biodiversity and accessibility. However, there is potential to undertake enhancements to these and other open spaces to strengthen the natural character of the City.

In addition, drainage and stormwater areas could potentially have a stronger biodiversity and habitat value, drawing on Green Infrastructure and Water Sensitive Urban Design principles which would also enhance the recreation potential of these spaces. Streetscapes could also be designed to have a stronger 'biodiversity' value. Consideration should also be given to the implications of climate change and the opportunities for responding to and mitigating climate change impacts, such as weather variations, irrigation demand, drought tolerant plant selection and shade tree provision.

The Direction

The Direction for the Theme 'Enhanced Nature, Biodiversity and Green Infrastructure' is as follows:

Conserve and enhance natural open space and strengthen the biodiversity, habitat value and function of natural and constructed landscapes and green infrastructure (stormwater, drainage, streetscapes).

Theme 5: Enhanced Nature, Biodiversity and Green Infrastructure

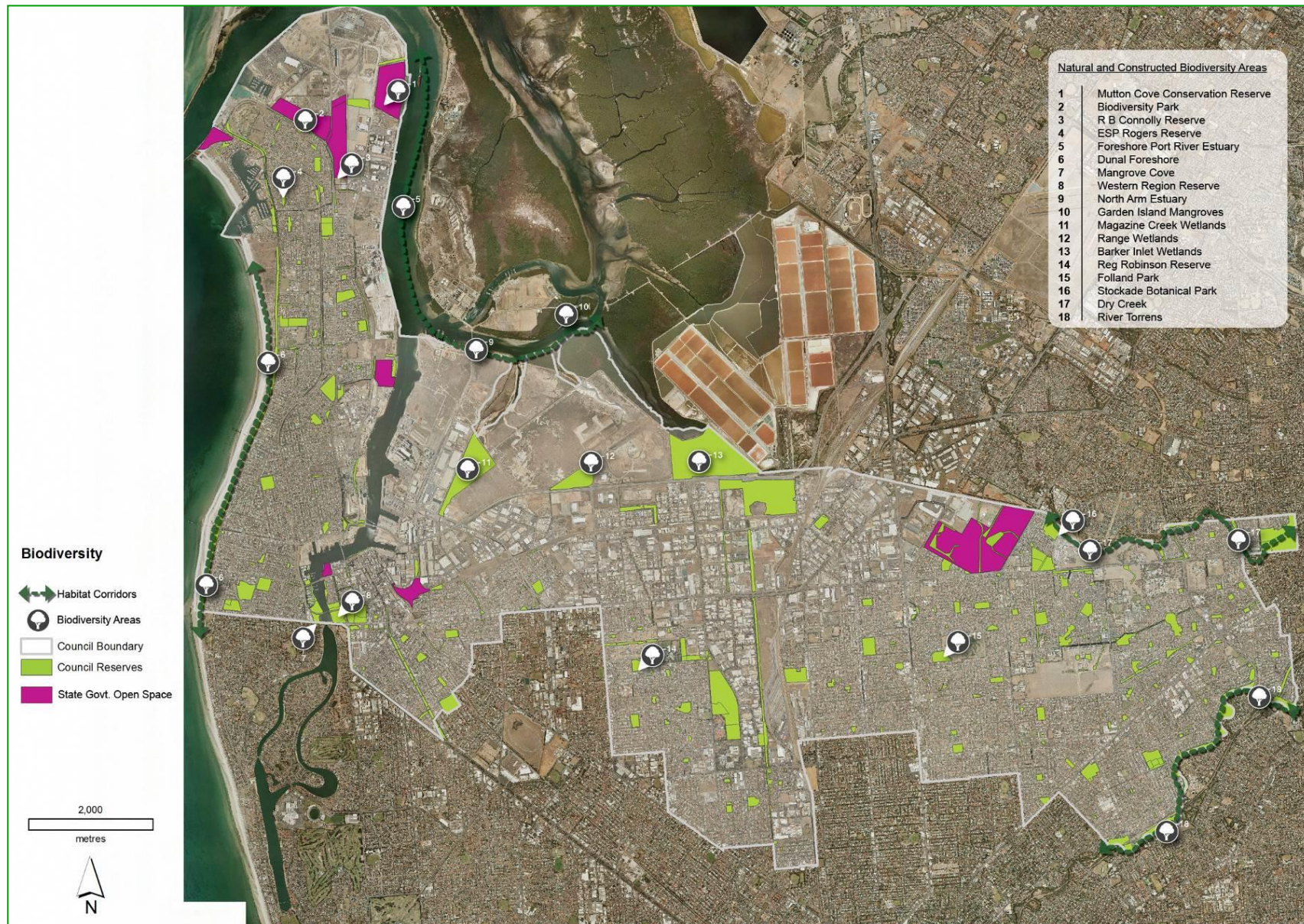
Strategies and Actions for Theme 5: Enhanced Nature, Biodiversity and Green Infrastructure

Topic	Strategy	Actions	Open Space Type	Priority
Natural Area Protection	5.1 Strengthen and protect existing natural areas including coastal dunescapes, remnant vegetation, and riverine and estuarine environments.	5.1.1 Continue to implement recommendations in relevant Council plans including the Biodiversity Management Plan 2009-2014 and the Coastal Management Plan to deliver quality natural areas and coastal environments.	Natural Areas Coastal Open Space	High
		5.1.2 Plan, maintain and enhance the natural value of the River Torrens corridor and balance the demand to provide quality recreation open space with the needs of ecological systems.	Linear Open Space	High
		5.1.3 Plan, maintain and enhance the natural value of riverine and estuarine areas (particularly Dry Creek, Port River and North Arm estuary) and balance the demand to provide access to the coast with the needs of ecological systems.	Natural Areas	High
		5.1.4 Maintain and enhance the ecological value of Folland Park and consider opportunities to provide landscape buffers and increased ecological value outside the reserve.	Natural Areas	High
Biodiversity Parks and Forests	5.2 Broaden the potential for people to experience the environment through biodiversity parks or forests.	5.2.1 Investigate opportunities to establish some unique and accessible biodiversity parks or urban forests (in addition to Folland Park) that aim to balance the built environment through nature. This could include allocating part of a large reserve such as Cosy Nook Reserve, Western Region Reserve or TK Shutter Reserve to create an urban forest or native plantings linked to pathways, open areas and activity opportunities.	Natural Areas	Medium

Strategies and Actions for Theme 5: Enhanced Nature, Biodiversity and Green Infrastructure

Topic	Strategy	Actions	Open Space Type	Priority
Constructed Biodiversity	5.3 Enhance the biodiversity and natural value of constructed landscapes such as wetlands, Biodiversity Park and drainage reserves.	5.3.1 Continue to enhance the biodiversity and natural value of the following open space as shown in Map 7: <ul style="list-style-type: none"> - R B Connolly Reserve - Reg Robinson Reserve - Western Region Reserve - Coastal Dunes - Stockade Botanic Park - Dry Creek Drainage Reserve (between Valley View and Northfield) - River Torrens Linear Park (East to west boundaries) 	Recreation Parks	High
		5.3.2 Continue to partner with State Government in the development and management of Biodiversity Park, Garden Island and Mutton Cove and develop these areas as significant open space with a high degree of natural value.	Natural Areas	Medium to Low
		5.3.3 Continue to partner with the State Government in the development of a program of works that will maintain and enhance the natural value of wetlands as well as exploring opportunities to increase access by the community.	Wetlands	Medium to Low
		5.3.4 Consider opportunities for the design and development of facilities that deliver ecological and biodiversity value and improve public access to green environments (consider roof gardens, green walls, vertical gardens, nesting boxes, flora and fauna links).	Recreation Parks Streetscape	Medium to Low

Map 7: Biodiversity Opportunities



Strategies and Actions for Theme 5: Enhanced Nature, Biodiversity and Green Infrastructure

Topic	Strategy	Actions	Open Space Type	Priority
Plant Selection Biodiversity	5.4 Increase the biodiversity and landscape function of open space and streetscapes through appropriate plant selection (consider climate adaptation, mature trees, amenity, habitat value, productive landscapes).	5.4.1 Where appropriate, consider planting sustainable trees and shrubs within open space areas and streetscapes that provide habitat for appropriate birds and fauna, appropriately reflect the environmental conditions, respond to climate change and create amenity.	All Types of Open Space	High
		5.4.2 Plan for the planting and management of large trees within open space, public realms and streets that deliver landscape assets with longevity (develop legacy landscapes that will provide assets for future generations).	Recreation Parks Natural Areas Streetscapes	High
Green Infrastructure	5.5 Enhance the green infrastructure potential of streetscapes, stormwater basins and drainage reserves (WSUD, biodiversity and natural systems).	5.5.1 Plan for the design and implementation of Green Infrastructure responses as part of open space and streetscape upgrades and development. Consider the provision of ecological services that provide habitat links, food sources, flood and rainfall modification and climate mitigation.	Recreation Parks Sports Grounds Coastal Open Space Streetscapes	Low
		5.5.2 Consider Green Infrastructure opportunities for drainage reserves and stormwater basins that balance stormwater management with ecological services provision and community benefit (usable open space provision).	Wetlands Recreation Parks Drainage	Low
		5.5.3 Integrate WSUD principles into future open space and streetscape projects to increase the ecological value, stormwater management and amenity.	Streetscapes	High
Heritage and the Environment	5.6 Integrate cultural heritage within environmental management.	5.6.1 Initiate master planning for Western Region Reserve (and connecting open spaces) to identify opportunities to promote Aboriginal culture in conjunction with coastal planning and climate change management.	Recreation Parks Natural Areas Coastal Open Space	High

Strategies and Actions for Theme 5: Enhanced Nature, Biodiversity and Green Infrastructure

Topic	Strategy	Actions	Open Space Type	Priority
Climate Change	5.7 As part of the Western Adelaide Region Climate Change Plan progressively develop climate change responses that mitigate future impacts in relation to sea level rise and alterations to weather patterns.	5.7.1 Manage the impact of climate change on landscapes both short term and longer term in relation to drought and increases in seasonal variations and potential pest species migration.	All Types of Open Space	High to Medium
		5.7.2 Consider and plan for the impact of sea level rise and wave action on coastal areas in relation to erosion and inundation and the need to protect and manage these impacts.	Coastal Open Space	High
		5.7.3 Explore the role of open spaces, streetscapes and landscape in the management and mitigation of climate related events such as heat island effects and increased rain events.	Recreation Parks Streetscapes	Medium
		5.7.4 Explore the value of landscape, trees and soils within open space in relation to carbon sequestration and the monetary value of reserve assets relative to the price of carbon.	Natural Areas	Medium to Low



Theme 6: Quality Design, Function and Facilities

The Context

Whilst the City of Port Adelaide Enfield has been committed to upgrading and enhancing open space since and prior to the 2006 Open Space Plan, there is potential to further enhance the quality and function of open space, including the need for improved and additional facilities and infrastructure.

As previously stated, Council has management responsibility for a large number of sports grounds, parks, linear parks, natural areas, drainage areas and other open space types. Accordingly there will always be potential for enhancement and best practice. A continued commitment to upgrade, maintenance and management will be required.

The Direction

The Direction for the Theme 'Quality Design, Function and Facilities' is as follows:

Continue to enhance the quality, design and function of open spaces through appropriately developed and well managed and maintained facilities and infrastructure.

Theme 6: Quality Design, Function and Facilities

Strategies and Actions for Theme 6: Quality Design, Function and Facilities

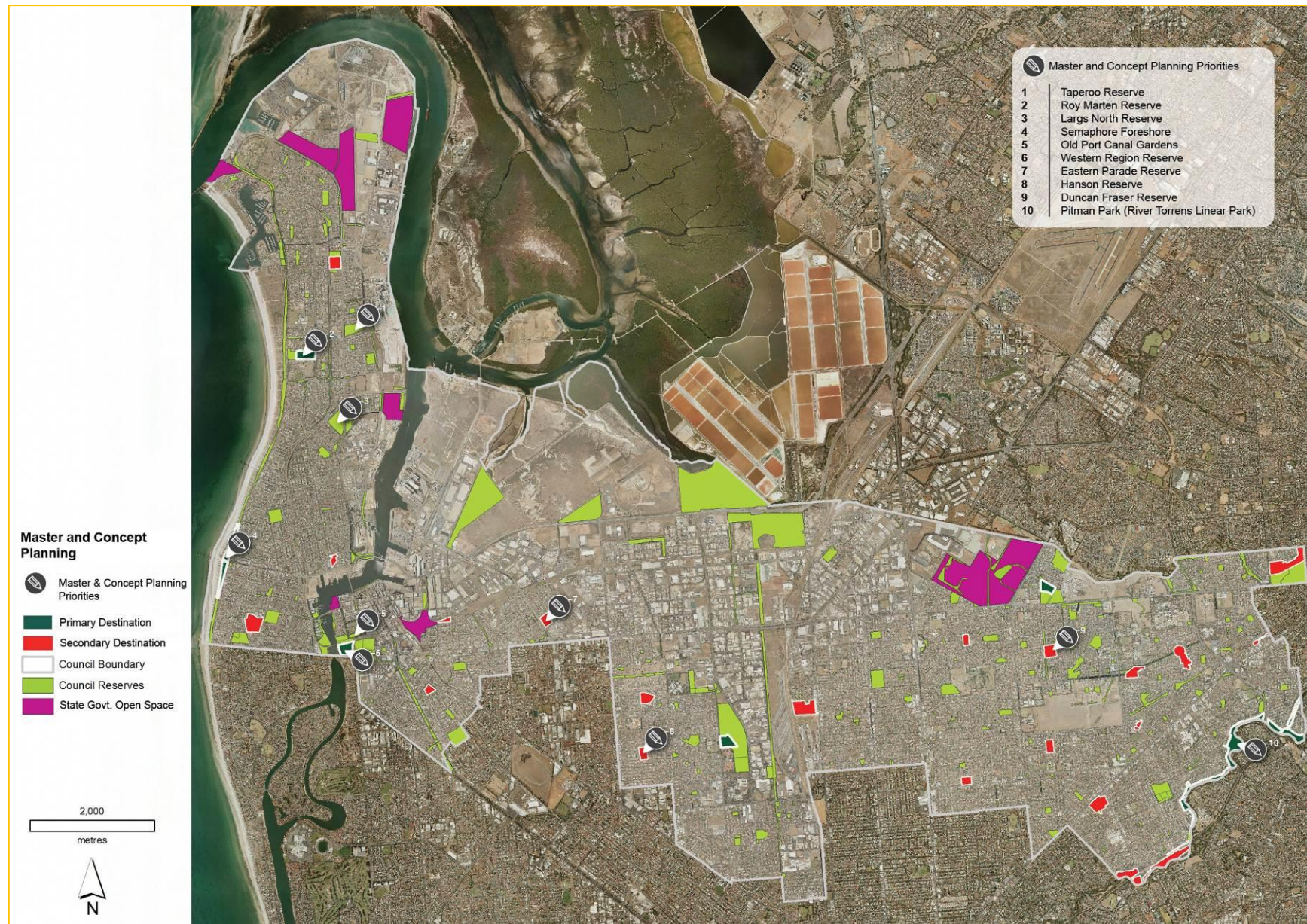
Topic	Strategy	Actions	Open Space Type	Priority
Principles and Approaches	6.1 Guide open space provision and quality through clearly defined principles and approaches, including for new development areas.	6.1.1 Adopt and continue to build on the Open Space Guidelines provided in Report 3 of the Open Space Plan. Use the Open Space Guidelines to guide open space provision and development in new development areas and to influence Council's future Development Plan where appropriate.	All Types of Open Space	High
Maintenance and Development	6.2 Maintain and develop open space and facilities and infrastructure to be consistent with hierarchy and 'fit for purpose'.	6.2.1 Use the Open Space Guidelines to guide the development of facilities and infrastructure within open space and enhance the safety and appeal of open space. This includes improving the provision and quality of park infrastructure (e.g. lighting, shelter, seating, paths, bins and BBQ's where appropriate), particularly in regional and district open space.	All Types of Open Space	High
		6.2.2 Undertake a review of public toilets within open space including the appropriate provision, location, quality, design and security of toilets, using the Open Space Guidelines to inform the review	All Types of Open Space	High
		6.2.3 Undertake a review of maintenance plans to ensure that maintenance programmes appropriately reflect the hierarchy of each open space parcel.	All Types of Open Space	Low
		6.2.4 Continue to adhere to Irrigated Public Open Space (IPOS) guidelines for water usage within reserves, streetscapes and public spaces that balances water conservation with adequate irrigation to maintain quality areas of lawn and landscape as well as enable micro climatic moderation through the use of ornamental water features.	All Types of Open Space	High

Theme 6: Quality Design, Function and Facilities

Strategies and Actions for Theme 6: Quality Design, Function and Facilities

Topic	Strategy	Actions	Open Space Type	Priority
Park Appeal	6.3 Enhance the appeal and function of local and neighbourhood parks.	6.3.1 Undertake improvements to neighbourhood parks to increase usability and appeal, including through increased trees and landscape, targeted irrigation around activity areas, play, activity opportunities, pathways, shelters and other infrastructure. The upgrades should initially focus on larger neighbourhood parks and the aim should be to achieve an equitable spread of good quality neighbourhood parks across the City.	Recreation Parks	High to Medium
Cultural Reflection	6.4 Utilise open space to promote and celebrate the diverse culture of the City.	6.4.1 Establish art work and creative features within key open space (e.g. destinations, linear trails) that present Aboriginal and Torres Strait Islander culture, multi-culturalism and local heritage.	Parks, Linear Open Space, Public Realm	Medium
		6.4.2 Design landscapes and infrastructure to further promote and reflect Aboriginal and Torres Strait Islander culture and multi-culturalism in key open spaces.	Parks, Linear Open Space, Public Realm	Medium
Facility Planning	6.5 Undertake a program of master planning and concept planning with a particular focus on key recreation and sporting open spaces to enhance quality, accessibility and community value.	6.5.1 Undertake master planning and concept planning for regional and district open space and recreation destinations, giving priority to the following parks and reserves (as shown in Map 8): <ul style="list-style-type: none"> - Roy Marten Reserve - Former Taperoo Primary School Site - Largs North Reserve - Semaphore Foreshore - Western Region Reserve - Old Port Canal Gardens - Hanson Reserve - Eastern Parade Reserve - Duncan Fraser Reserve - Pitman Oval, River Torrens Linear Park 	Recreation Parks Sports Grounds	High to Medium

Map 8: Master Plan and Concept Plan Priorities



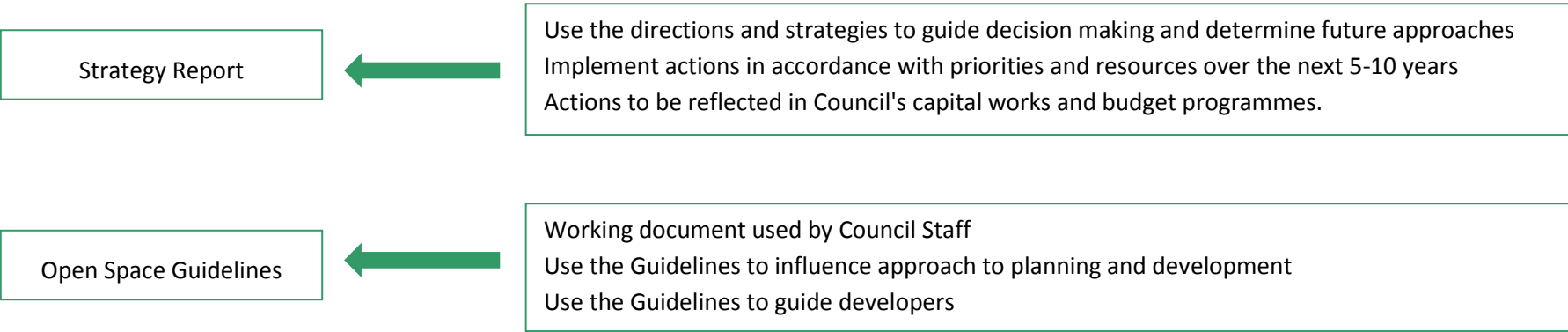


IMPLEMENTING THE STRATEGY

Implementation Approach

Whilst the Open Space Plan 2013 does not commit Council, the State Government or any other organisation to undertake strategies, actions or works, it will be important for Council to make a general commitment to implementing the Strategy over time as resources become available and in accordance with other priorities.

As such it is recommended that the strategic actions are incorporated and appropriately reflected in Council's capital works and budget programmes.





Timing and Resources

Whilst a suggested priority has been allocated to actions in the Open Space Plan 2013, the timing of implementing each strategy and action will depend on the availability of funds, people resources and changing priorities. Some actions will require further planning and consultations with community and user groups to ensure outcomes meet the needs of the community.

In relation to implementation of priorities in the Strategy, indicatively:

High = commencement within 2 years

Medium = commencement with 3-5 years

Lower = commencement beyond 5 years

Grant funding and partnership opportunities should be sought for actions that require the allocation of resources and particularly for upgrades to sports grounds, recreation destinations, WSUD opportunities and climate change initiatives. This includes grant funding through State and Federal Governments and partnerships with sport and recreation groups and schools.



Strategy Evolution

The Open Space Plan 2013 is not a 'fixed' document. It should evolve over time through ongoing contributions by staff from across Council and to reflect community engagement and changing Council and State priorities and resource availability.

Strategies, actions and works can be altered where there is a rationale. In addition, new works are likely to be identified and included in Council's capital works programme on an ongoing basis to reflect the findings of future planning, site visits and assessments, providing the works are consistent with the strategies and actions in the Plan.

Council staff should undertake a review of the strategies, actions and works outlined in the Open Space Plan at least once a year and the Open Space Plan 2013 should be reviewed in detail towards the end of the Strategy timeframe, i.e. in 2018.

A multi-disciplinary internal Council working group, the Open Space Coordination Group, should guide future reviews of and additions to the Open Space Plan 2013. Overall, a coordinated and strategic approach to the ongoing evolution of the Open Space Plan 2013 to respond to the future needs of the community should be adopted.

