



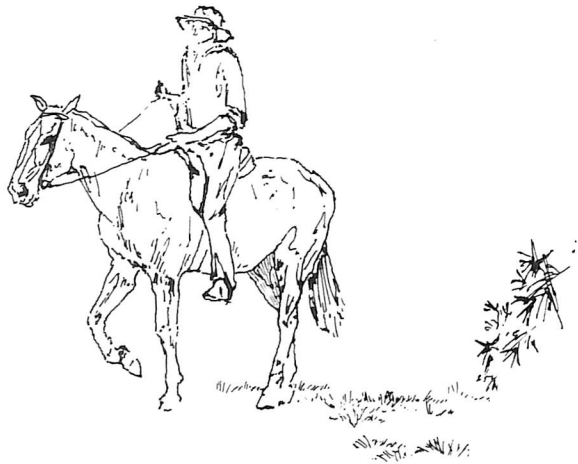
Melbourne  
and Metropolitan  
Board of Works

# Dandenong Valley Metropolitan Park — News

No. 4, Winter, 1985







### RANGERS COLUMN

By Area Superintendent: Peter Goudy  
and Ranger-in-Charge: Ray Cromie



*The Feral Garden Bed*

### Nature 1 Vs Gardeners 0

A couple of years ago, about a dozen Silver Leaf Stringybarks were planted in the garden bed in front of the Jells Park visitor centre. All these trees were carefully nurtured and after having been raised from seedlings in containers, they were carefully planted in the garden bed, watered, fertilized, staked and protected by cages. As a result of all this they have been doing fairly well and are now about two metres tall, however during the act of planting some seeds were spilt and became self-sown. To the chagrin of the gardeners these undisciplined fellows are now about eight metres tall and continuing to outstrip their cultivated brethren.

### Bird-Banding

In January of this year a dying seagull was found in Jells Park and handed to the rangers. The bird was wearing a band which was removed and sent to the CSIRO Division of Wildlife Research who replied with an interesting letter giving details on the banding of the bird in question and the Australian Bird-Banding Scheme in general, from which the following extracts are taken.

"The bird was a Silver Gull nestling banded on 14 October 1984 at Mud Island, Port Phillip Bay."

### The Australian Bird-Banding Scheme:

**Objectives** - The aim of the Australian Bird-Banding Scheme is to obtain accurate information about the habits and movements of birds. Such knowledge, apart from its purely scientific value, is essential for the effective conservation of native species, for the management of game birds, and for the control of those which are pests.

**Organization** - The Scheme, which began operation in 1953, is run by the CSIRO, Division of Wildlife and Rangelands Research, in collaboration with the State and Territory fauna authorities. Bands are supplied to approved ornithologists, professional and amateur, in order that they may undertake specific ornithological studies. Bands supplied by the Scheme have been used throughout Australia and its territories, as well as in Papua New Guinea, Malaysia, Brunei, Vanuatu, Fiji and Antarctica.

**Results** - Up to 1983, over 1,800,000 birds of 830 species have been banded through the Scheme and over 200,000 have so far been recovered. Many birds are recovered on more than one occasion, the record being held by a Silvereye banded in Sydney which was retrapped, by the person who banded it, a total of 677 times in 1148 days. Approximately 80,000 birds are now being banded each year.

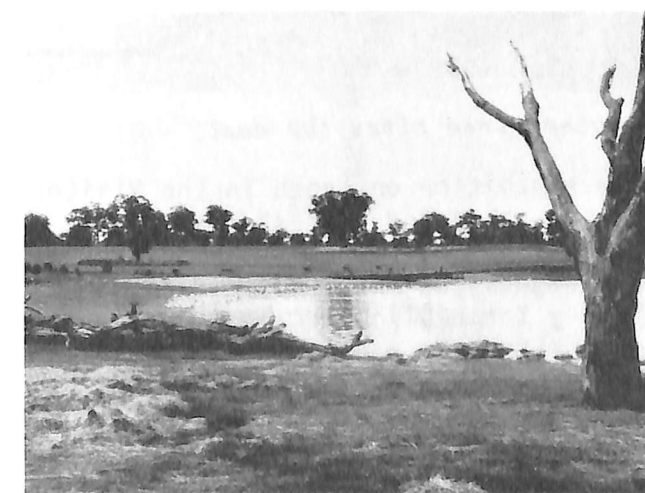


*Koomba Lake Reflecting Wantirna*

### Lake District

The former Minister for Water Resources, the Hon. David White on 15 February turned on a pump to ceremonially mark the commencement of the filling of the new lake at Koomba. The lake was completely full a month later and is already looking terrific. The banks are well grassed, the trees and bushes on the islands are well established and the water is clear and attracting a large duck population.

The new, improved Jells Park Lake Mk II is filling up again. The refilling process is being kept at a fairly slow rate to avoid the muddy water associated with heavy streamflows and to give the new vegetation along the edge a chance to consolidate. The end of winter should see it just about full again.



*New improved Jells Park Lake*

The improvement works have proved very successful and already a lot of new wildlife has been attracted to the lake.

The high degree of success achieved in creating attractive habitats for fish and birds in the lakes of Jells and Koomba Parks will hopefully be continued with the rehabilitation of former wetlands within the Rigby sub-area and at Devon Meadows, being carried out at present.



*Wantirna Home for Ducks*

### Celebrations

On Wednesday 20 March, as part of Senior Citizens Week, the City of Waverley hosted a barbecue lunch at Jells Park. About 150 of Waverley's senior citizens attended the gathering to enjoy lunch and the parkland surroundings to the musical accompaniment of the orchestra of Syndal Technical School.

The children of Waverley celebrated Victoria's 150 birthday at Jells Park on 31 March. About 18,000 people attended the gathering organised by the schools of Waverley, and highlights of which were a parade and historical concert.

### Dogs

Yet another child has been bitten by an unleashed dog in the Park. Dog owners are once again reminded that when visiting a Metropolitan Park they are required to keep their animals leashed.



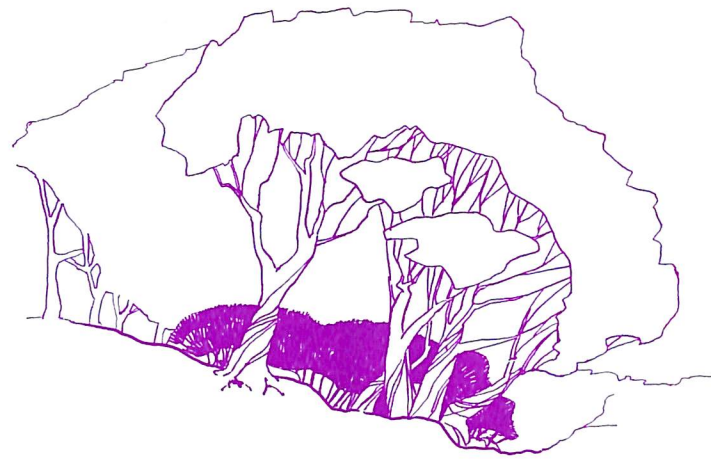
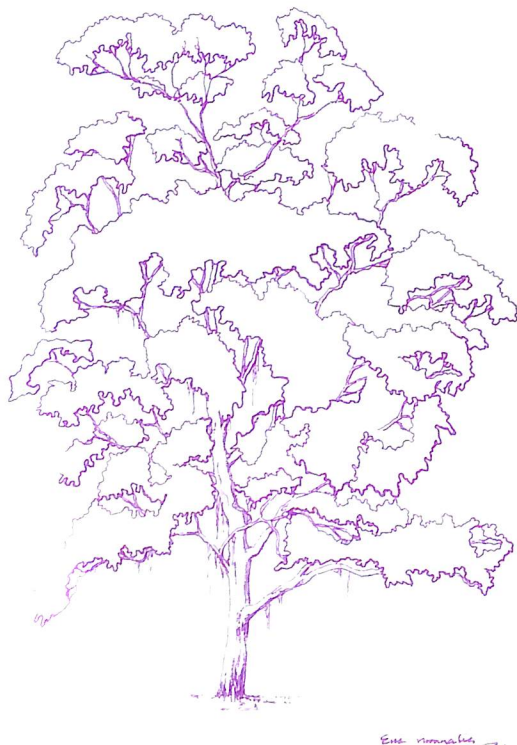
## Arbor Week 1985 at Jells Park

Programmes for Primary School students were conducted at Jells Park to celebrate Arbor Week 1985 which commenced on 22 April. The gardening staff conducted two sessions each day in which they talked on the value of trees, their propagation and how to care for them. They demonstrated techniques of seed sowing and taking cuttings.



*Looks the right way up*

The children were then able to select a seedling of their own which they potted up and later took home. Each child also planted a tree in the garden beds surrounding the car parks and was given a certificate to mark the occasion.



The programme proved so popular this year that Arbor Week turned into Arbor Fortnight at Jells Park. 518 students were booked in, mostly from grades 4-6. Two Special Schools also attended. Hillside Special sent along six boys and as a result of the interest shown are hoping to arrange a regular work experience programme. Glen Waverley Special visited with fourteen students, ten of whom were in wheelchairs. In spite of the difficulties of communication it was obvious that they thoroughly enjoyed the programme.



*Another tree bites the dust*

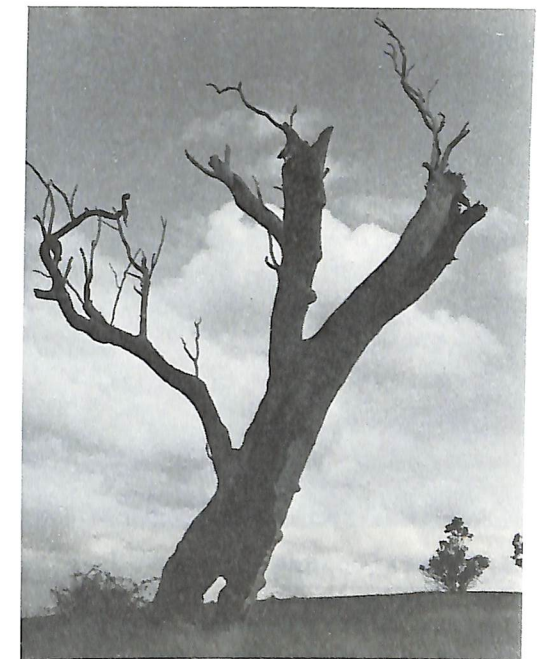
The exhibition on trees in the Visitors Centre attracted a great deal of attention from visitors during the fortnight. On Anzac day and on the Sunday the public were invited to watch demonstrations and to select a seedling for themselves.

Fine weather throughout the programme made the event an extremely enjoyable, rewarding and successful occasion for all involved.



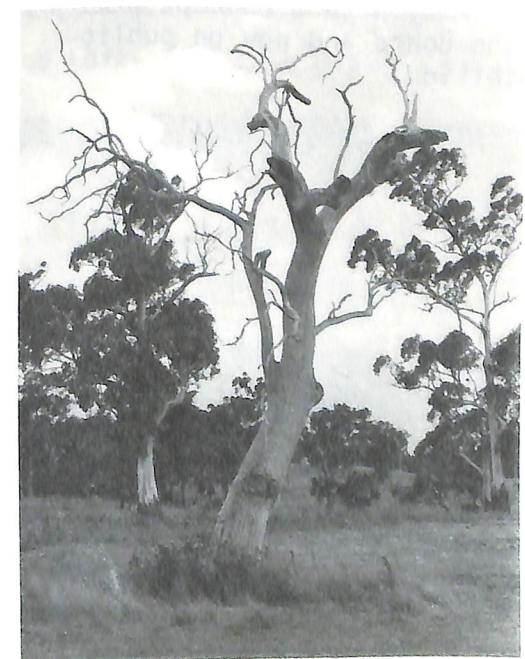
## Dead trees

Throughout the Dandenong Valley Metropolitan Park a number of dead trees have been left standing. These trees are not removed unless they deteriorate into a dangerous state as they provide a good habitat for animals, birds and insects. Because of their important role in the programme to attract and re-establish wildlife, dead trees are regarded as an essential part of the Park. The dead trees provide roosting or breeding hollows, the presence or absence of which, in areas other than those developed for intensive recreational use, are frequently the limiting factors in an area's capacity to sustain wildlife.



People unfortunately tend to neglect decrepit, old trees which are so vital to animal life, for neat attractive young ones.

Not content to rely solely on natural habitat, rangers have for several years been erecting boxes in the Park to attract and accommodate wildlife. The boxes have proved fairly popular with birds, sugar gliders and other small animals, such as bats.







### METROPOLITAN PARKS

Since the mid 1970's the Board of Works has been developing a series of large regional parks throughout Melbourne to cater more for the recreational needs of regional rather than local populations. Until recently there were five metropolitan parks with a proposed total area of 4,466 ha. These parks located at Dandenong Valley, Maribyrnong Valley, Yarra Valley, Braeside and Point Cook, are being developed with recreational, educational, sporting, picnicking, conservation, and agricultural facilities being provided for the enjoyment of Park visitors. Towards the end of 1984, the Waterways and Parks Division assumed responsibility for the Board's land along the lower Maribyrnong River, which will be developed as a linear park in conformity with a concept plan prepared by the Board and now on public exhibition.



*Yarra Valley - Westerfolds Park*

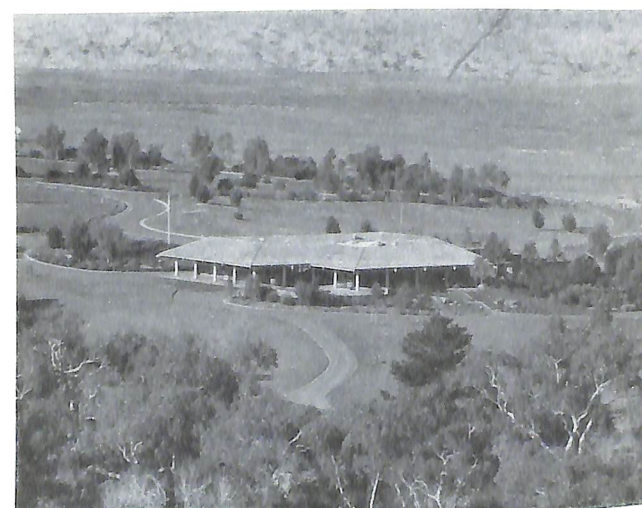
On 21 January 1985 the Division became responsible for the management of Werribee Park; the sixth Metropolitan Park of Melbourne.



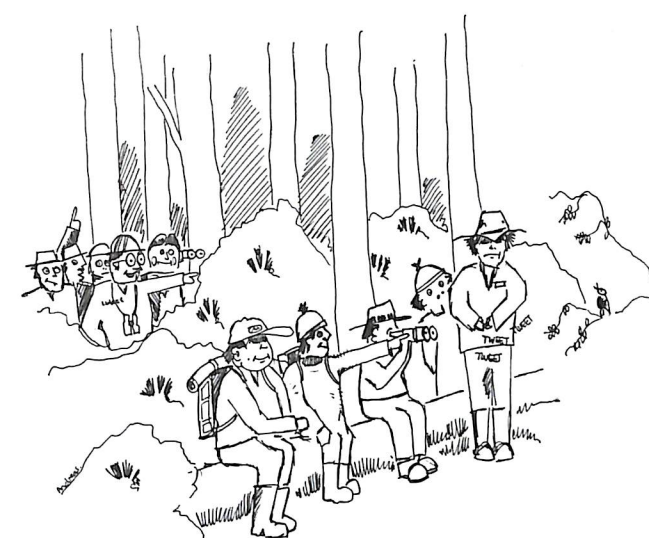
*Werribee Park*

### GROUP VISITS

Please note that to assist in park management, organised groups of more than 20 persons should seek a permit. For Jells Park this can be arranged by ringing 561 4776 during office hours 8.30am to 4.00pm, Monday to Friday.



*Maribyrnong Valley - Brimbank Park*



*"I CAN STILL HEAR HIM 'SHHHH' THROUGH THE TREES, GANG!"*

### Strictly for the Birds

Have you ever used one of those useful little bird callers put out by the Gould League? With a bit of practice they produce a wonderful variety of realistic bird calls.

### DANDENONG VALLEY METROPOLITAN PARK ADVISORY COMMITTEE

If there are any matters affecting the DVMP which you would like to raise with the Committee, please do not hesitate to contact a Committee member or write to: The Secretary, Dandenong Valley Metropolitan Park Advisory Committee, C/- MMBW, 625 Lt. Collins St MELBOURNE Vic 3000.

The DVMPAC meets quarterly in February, May, August and November.

Current members are:

#### MMBW

Mr A R Patterson MBE JP, Chairman  
82 2517 (H)

#### City of Knox

Cr W H Tew MBE JP 758 1273 (H)  
Mr R J Ladd 220 8222

#### City of Waverley

Cr D C McIntosh 277 4260  
Mr J N Halford 560 9011

During the Holiday Programme at DVMP we organised a 'Walk on the Wild Side' for 12-14 year olds. The route followed the creek and took a whole day with lots of stops and activities on the way.

The leader, Andreas, took the bird callers and, in a particularly dense patch of bush, sat the group down on a log. The kids kept very still and the results were good. Lots of little birds, blue wrens, thornbills and fantails flew in to find out what sort of bird was making the noise and the group was entranced.

Suddenly they were aware of something else arriving, a group of birdwatchers was stealthily creeping up on them through the bush, convinced that they were about to discover a new species for the Park!

Dorothy Evans  
Visitor Services Officer

### Department of Youth, Sport and Rec.

Mr R Russell 602 1566 (B)

### City of Nunawading

Mr D Wilson 874 2211

### City of Ringwood

Mr A C Robertson 870 4311

### Conservation Council of Victoria

Mr B C Loft 561 2381 (H)

### Department of Conservation, Forests and Lands

Mr S W Calder 617 9222

### Dandenong Valley Authority

Mr M Robinson 797 1555

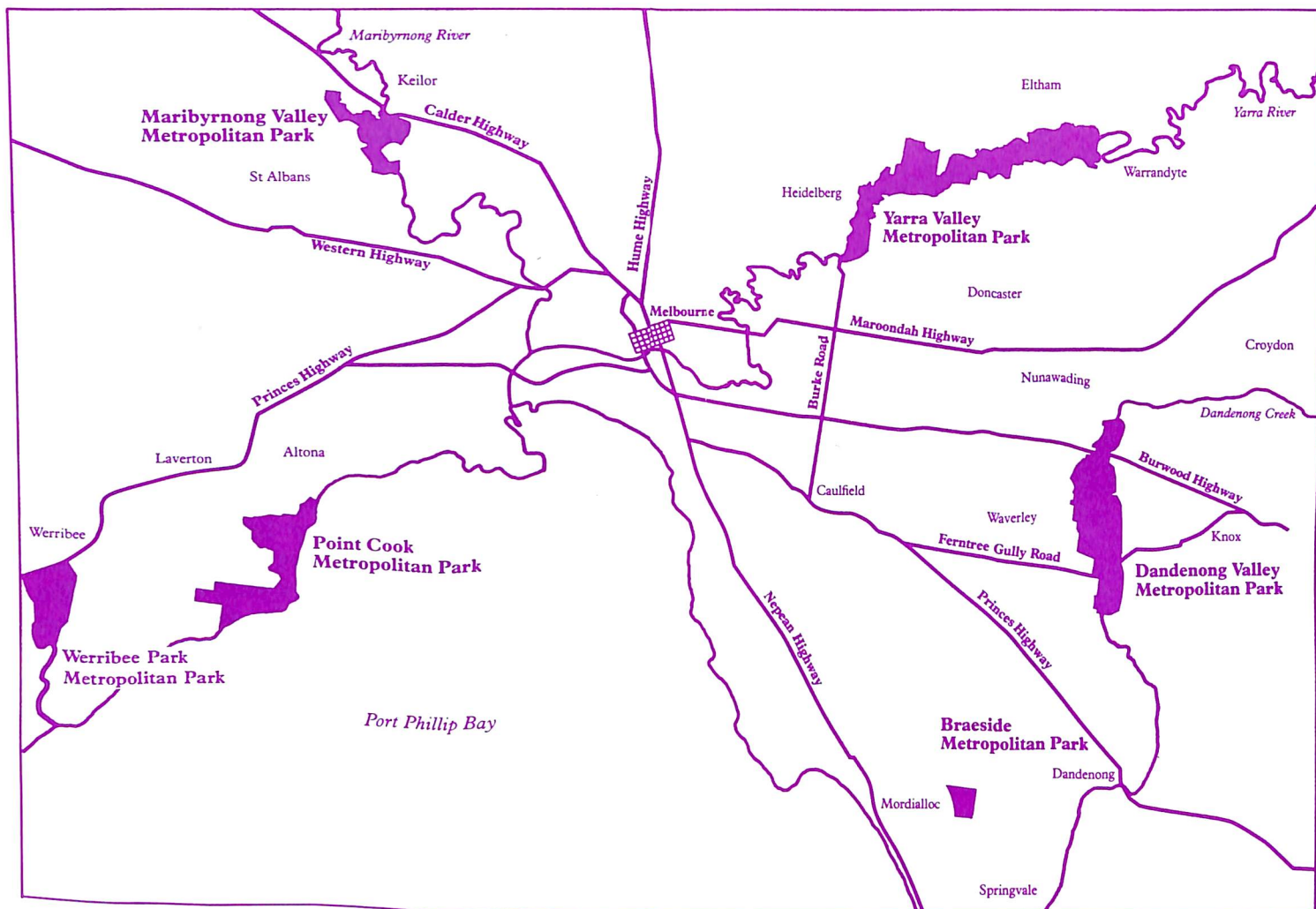
### Road Construction Authority

Mr B Head 878 0555

### State Electricity Commission of Vic.

Mr L Stubbs 615 3425 (B)





## THE OTHER PARKS

Jells Park is a part of Dandenong Valley Metropolitan Park which in turn is one of a chain of six major regional parks operated by the Board of Works, encircling Melbourne's urban area.

The six parks, their areas and their principal characteristics are as follows:

Point Cook: 933ha

: beach recreation, wildlife conservation, historic homestead

Werribee Park: 212ha

: historic mansion, picnic grounds, formal gardens, safari park, friendship farm

Maribyrnong Valley: 460 ha

: picnic areas, passive recreation, children's farm, attractive deeply incised landscape

Yarra Valley 1432 ha

: picnic areas, agriculture, remnant bushland, passive recreation

Dandenong Valley: 1330 ha

: picnic areas, passive recreation, agriculture, flora and fauna conservation

Braeside: 311 ha

: golf course, wildlife conservation