



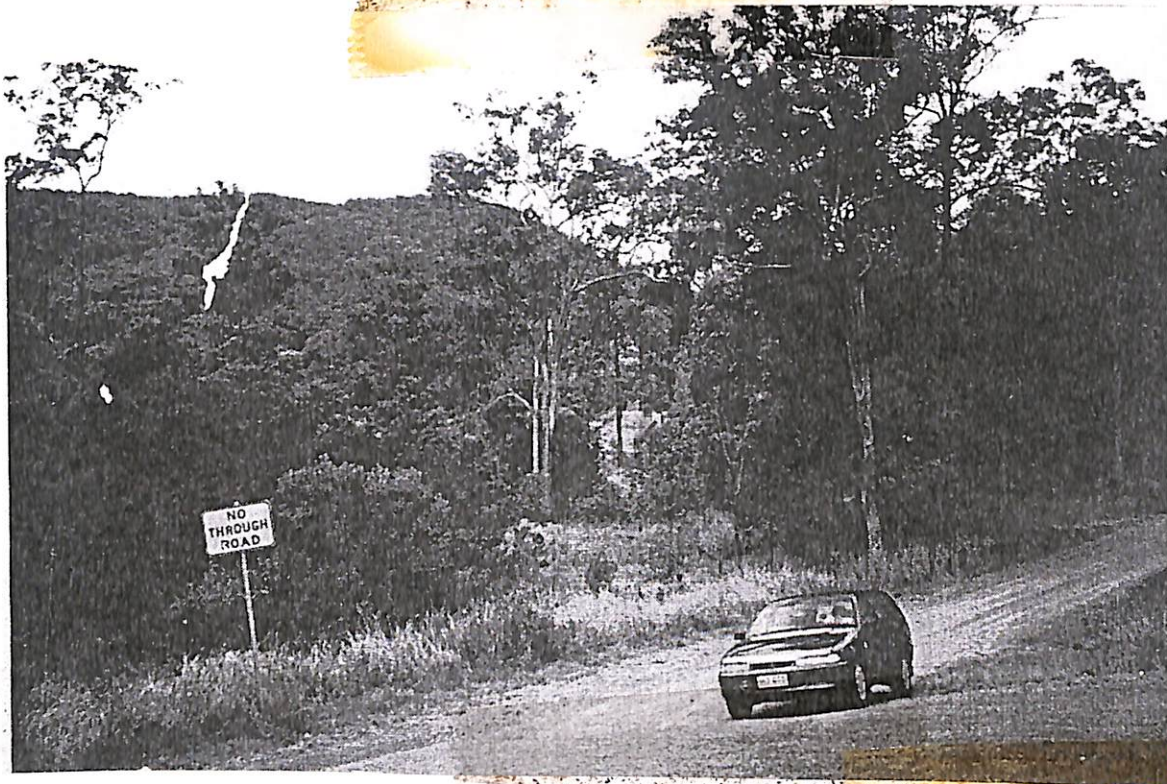
DEPARTMENT OF NATURAL RESOURCES

POLICY CO-ORDINATION



**MANAGEMENT OF THE MOUNT NEURUM ROSS SITE
ABRIDGED VERSION, COVERING EXTENT, ACCESS AND USE
DRAFT REPORT - FOR INTERNAL USE ONLY**

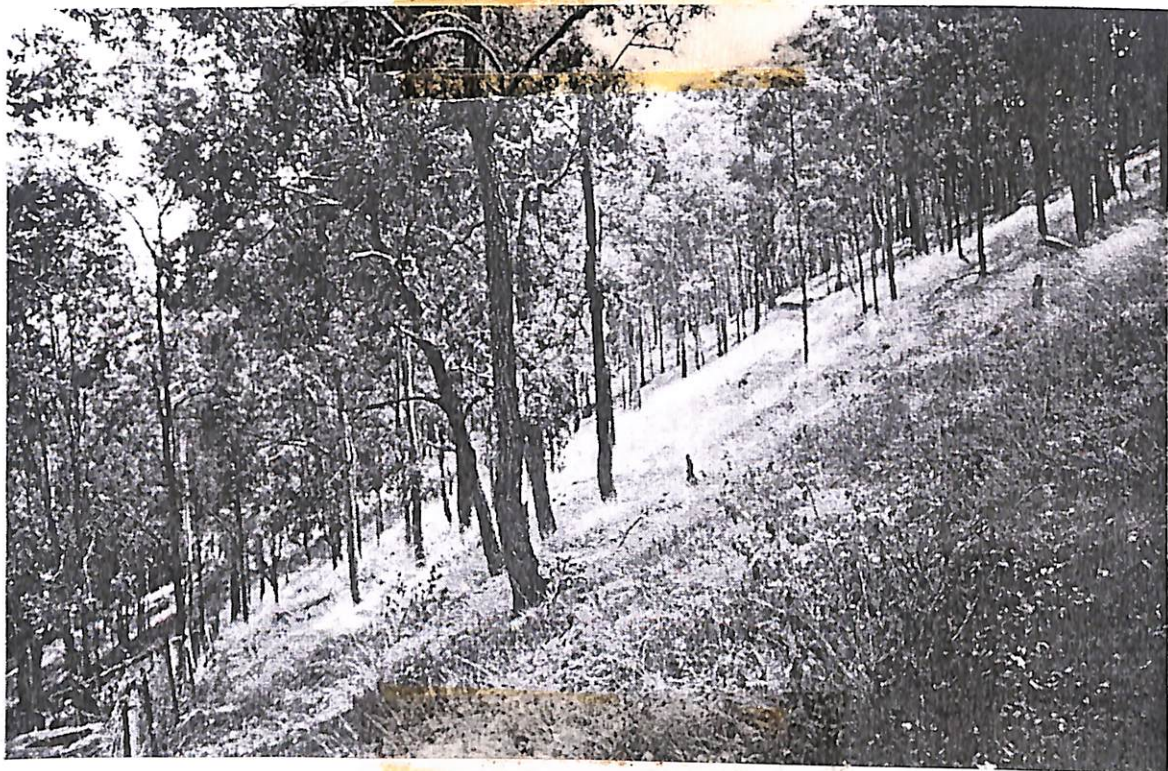
Author: David Marlow (Principal Research Adviser)
Issued: 21 November 1995
Updated: 5 December 1996



Photograph 13: Fraser Road from the bitumen of Vidoni Road



Photograph 14: The end of the formed section of Perkins Road from Fraser Road



Photograph 15: The early terrain along the unformed Perkins Road access from Fraser Road



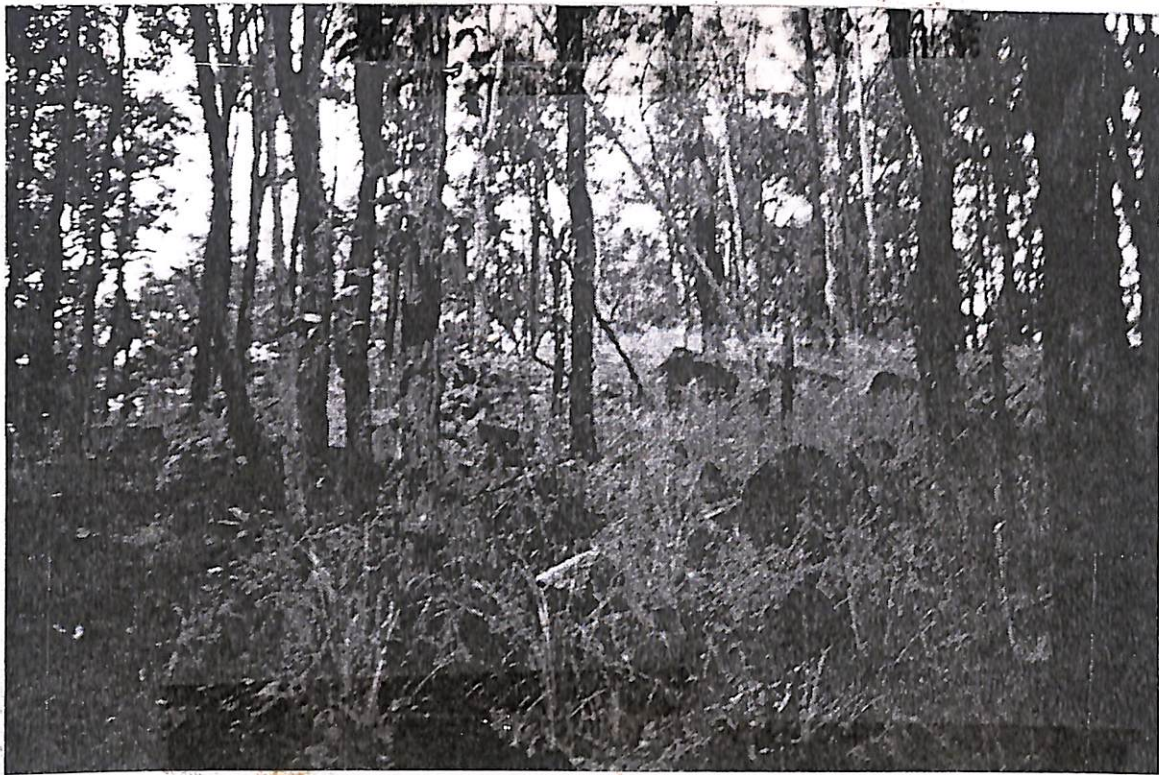
Photograph 16: The former timber track up Mount Neurum



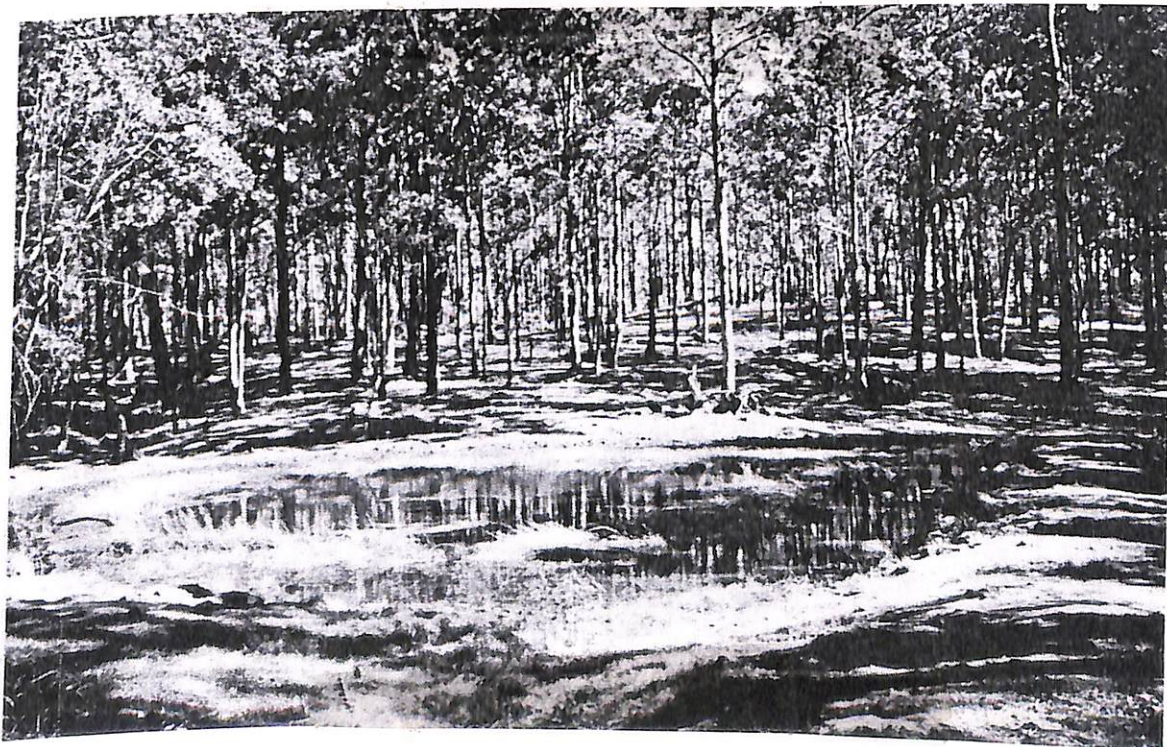
Photograph 17: Looking down the timber track from its junction with the present 4WD track



Photograph 18: Looking up to the plateau of Mount Neurum along the present 4WD track from its junction with the timber track



Photograph 19: Typical terrain in the higher unformed stage of Perkins Road



Photograph 20: The dam and typical vegetation on the plateau



Photograph 21: Vegetation on the upper eastern slopes



Photograph 22: A view to the north from the plateau



Photograph 23: A view to the south down the present 4WD track