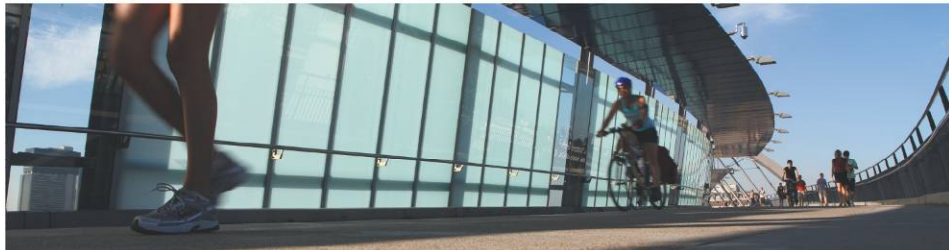




Growth Management Queensland

SEQ Community Greenspace Network Plan



Tomorrow's Queensland:
strong, green, smart, healthy and fair

Toward 
Tomorrow's Queensland

 **Queensland**
Government



What is the Network Plan about?

- Identifying the existing regional community greenspace network
- Identifying other priority locations supporting multiple landscape values, including those accessible to key growth areas
- Developing scenarios to optimise an expanded future network

What isn't it about?

- It's not about:
 - identifying land for acquisition; or
 - planning for whole-scale landscape change...
- It's about:
 - co-location of outcomes and uses eg. offsets
 - landscape stakeholders working in harmony, with multiple landscape values, based around existing uses
 - tourism and outdoor recreation enterprises
 - Government agencies
 - NGOs like SEQ Catchments



Structure

Section 1 Introduction

- ‘genesis’ , purpose, relationship to SEQ regional planning frameworks and other Queensland Government initiatives

Section 2 Background

- key terms, benefits, values and uses

Section 3 Planning and policy framework

- highlights the SEQ Outdoor Recreation, Rural Futures and SEQ Regional Plan



Structure

Section 4 Key issues

- population growth, outdoor recreation demand, regional greenspace supply and distribution

Section 5 Meeting the challenge

- Strategic planning
- Regional offsets
- **Regional parks and trails – a proven solution**

Section 6 SEQ Community Greenspace Network

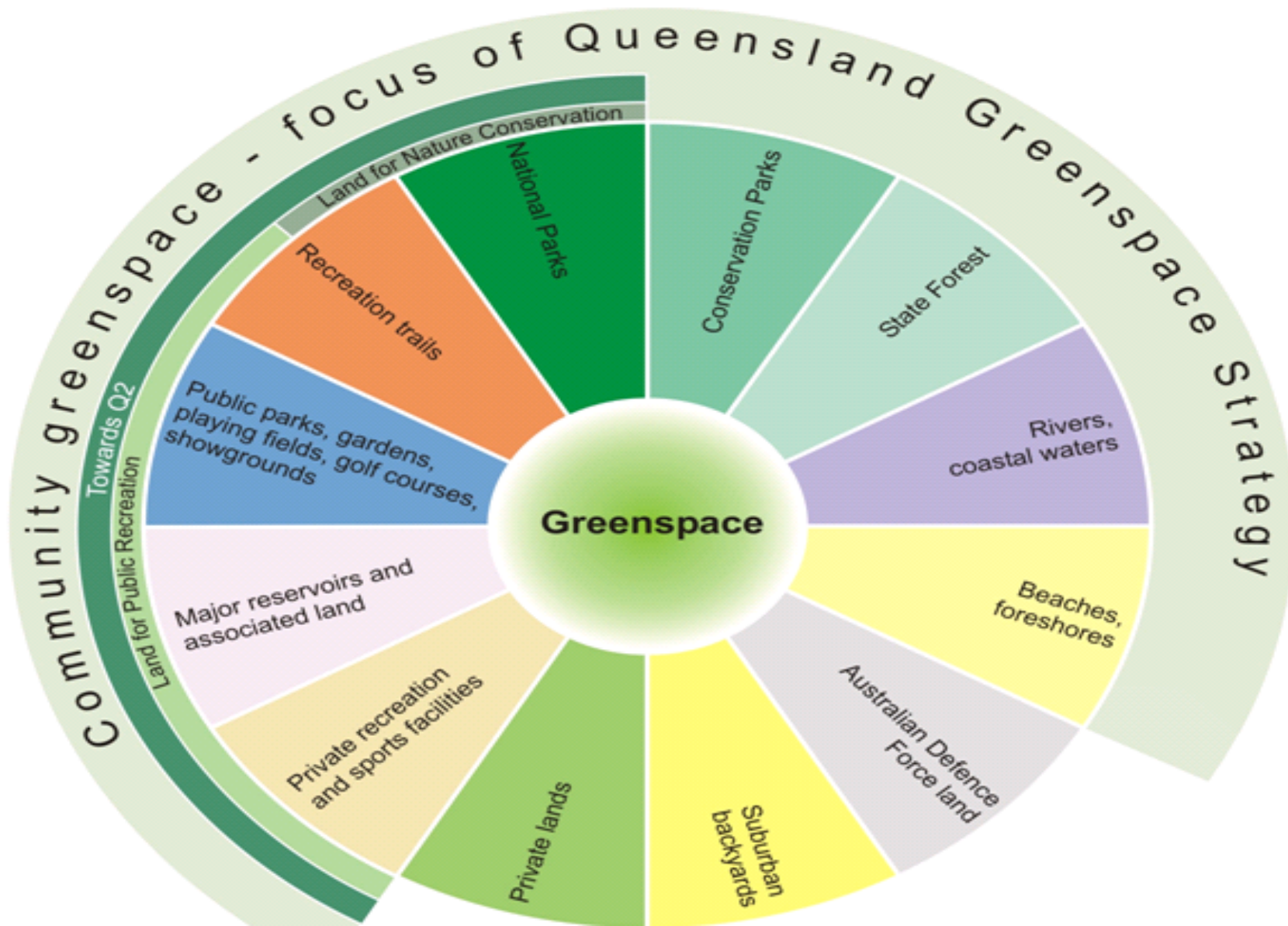
- Existing Network 2011
- Community greenspace criteria
- Future Network Scenarios 2031

Section 7 Implementation

- arrangements and mechanisms, monitoring, review, stakeholder input and coordination



SEQ Community Greenspace Network 2011



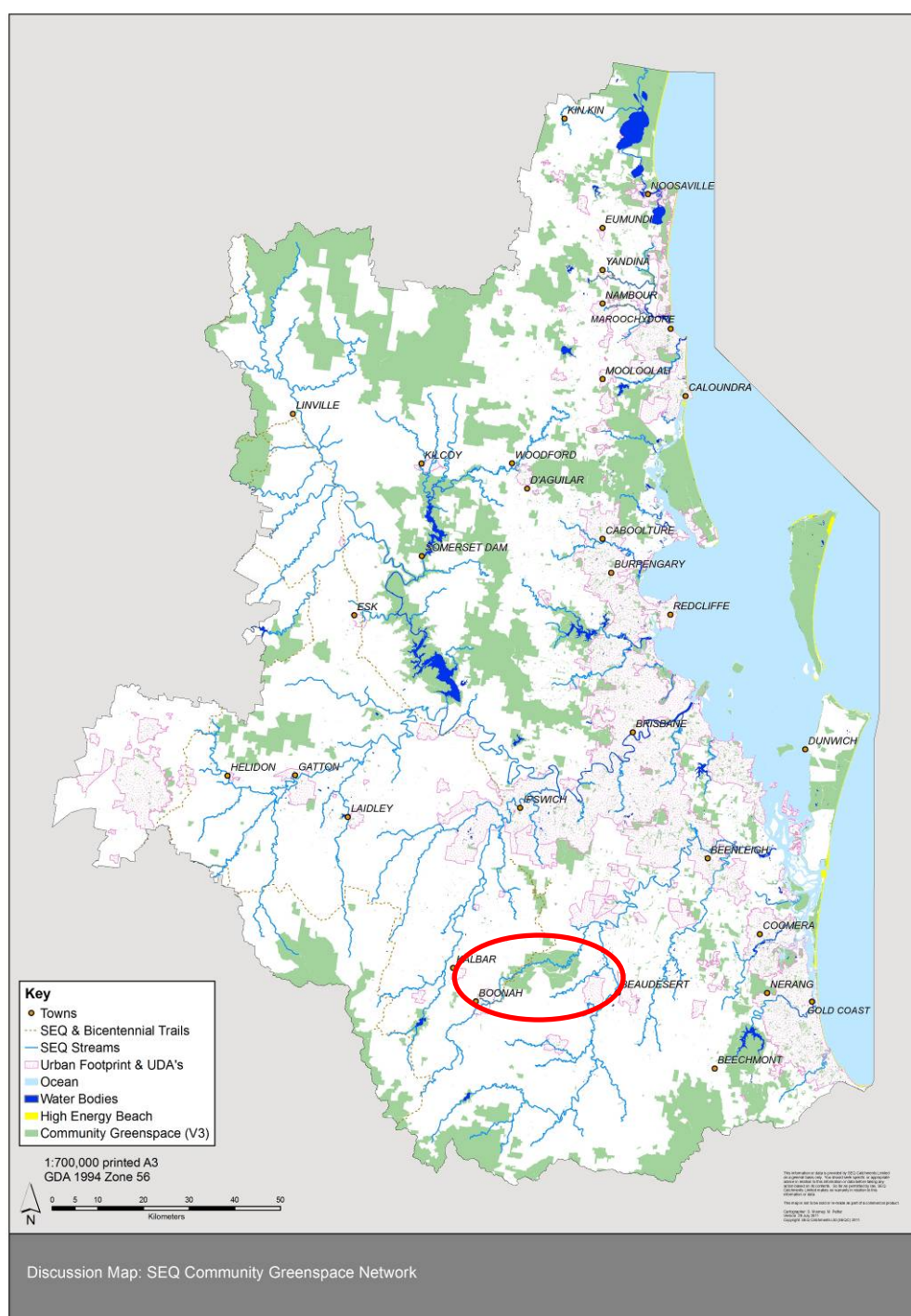
SEQ Network 2011

Land area is **21.5%** of SEQ
(492 560 ha)

Recent:

5745 ha around Wyaralong
Dam

70% north of Brisbane River





Scenarios for optimising a future network

Regional network criteria based on:

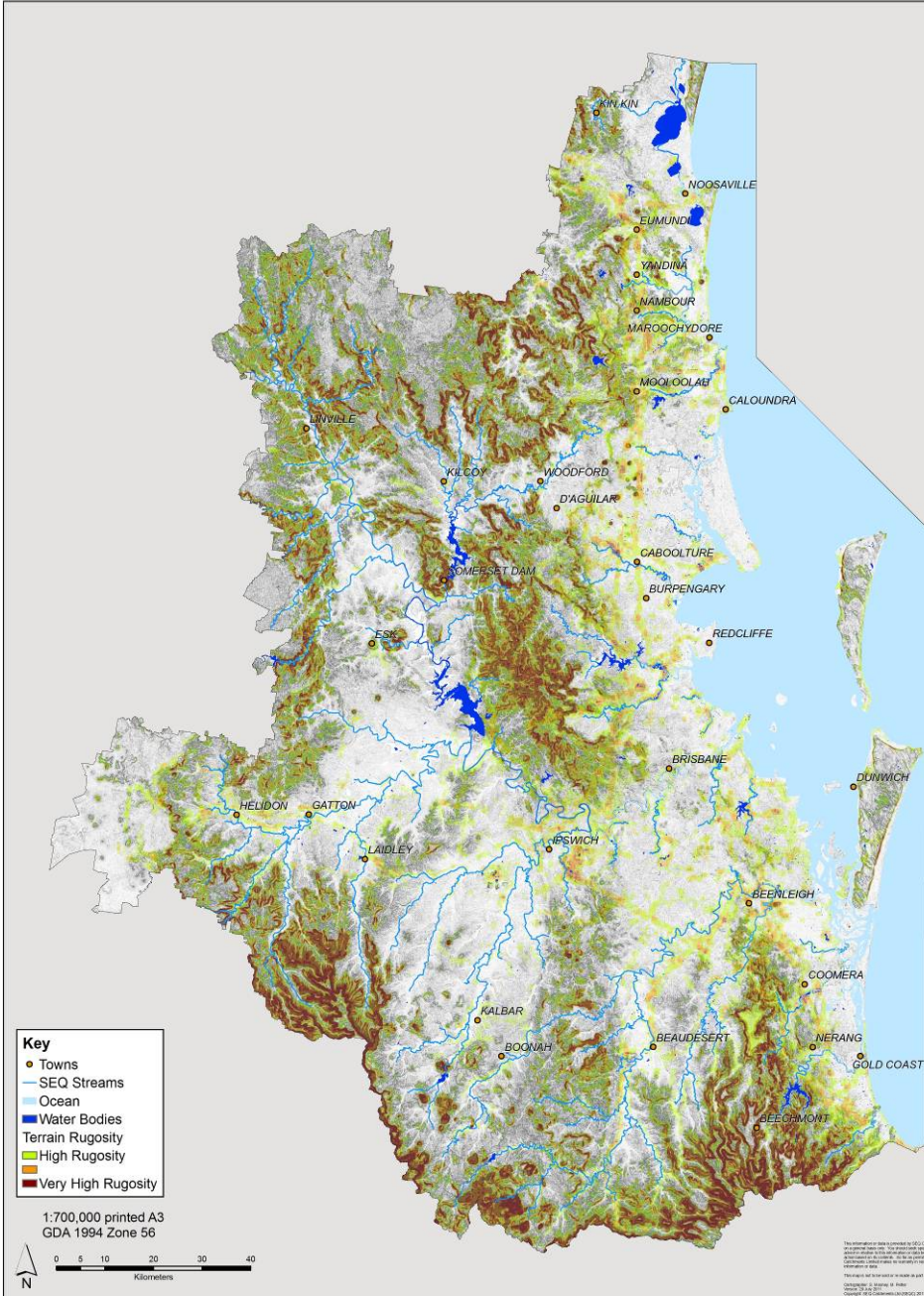
- Regional Landscape Strategy
- RFGMs
- SEQ Regional Plan policy frameworks
- Confluence of multiple landscape values
 - eg. biodiversity, scenic amenity, coastal values, waterways, topographic diversity, ecosystem services
- Landscape context and connectivity
- Landscape settings (updated concept)
- Greenspace supply and distribution
- Sources of regional demand (priority growth areas)
- Stakeholder expertise (**esp. RLOSAC**)



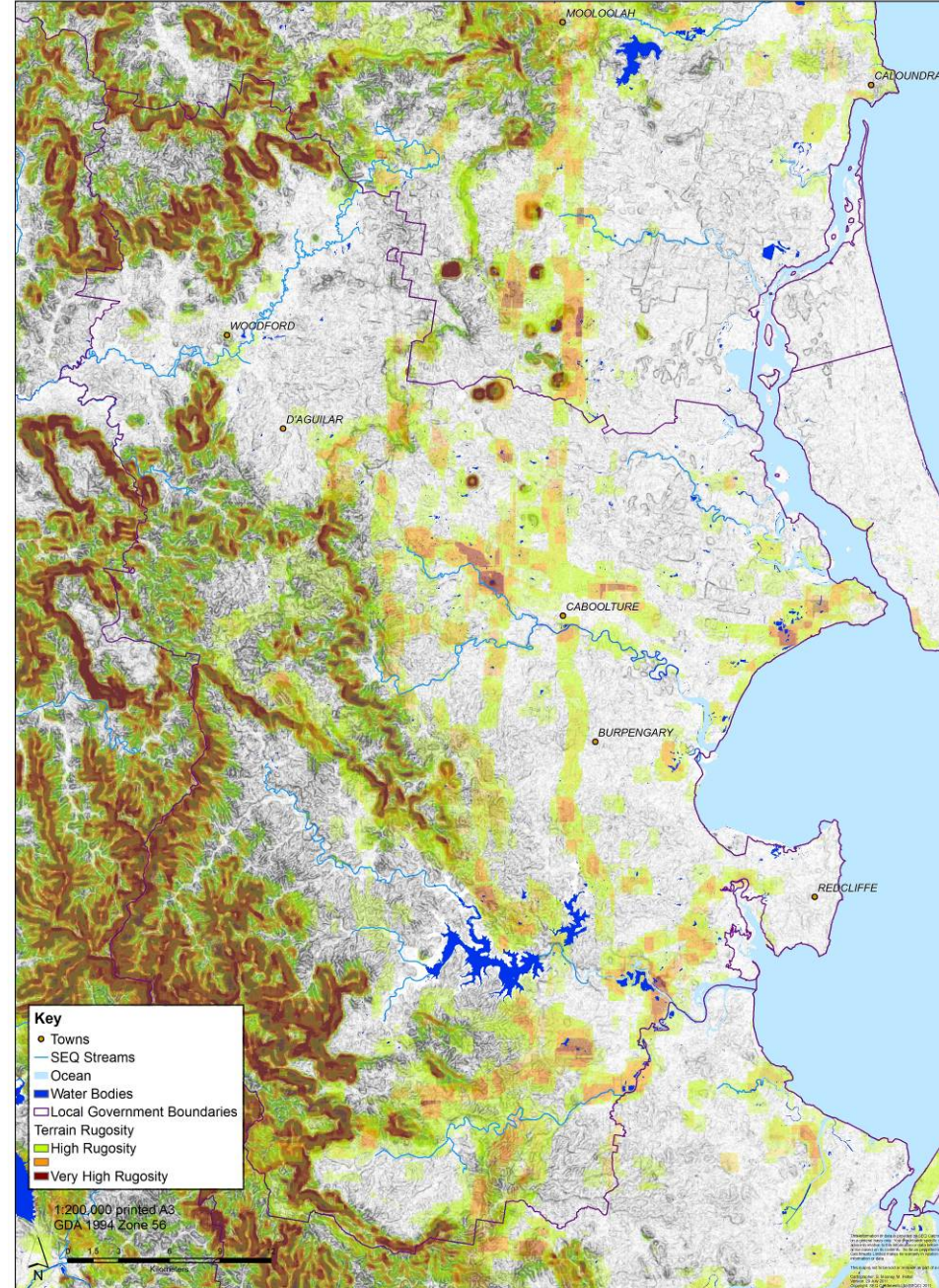
Decision Support Criteria – GIS layers

Landscape Values

- Landscape setting (scale of presence of development)
- Biodiversity
- Scenic amenity
- Rural production
- Ecosystem services
- **Landscape diversity**
- Waterways and wetlands
- Coast



Discussion Map: Terrain Rugosity
Landscape Roughness based on Scenic Preference Variety, Scenic Amenity Variety, Elevation Variety and Slope Variety



Discussion Map: Terrain Rugosity, Moreton Bay Regional Council Area
Landscape Roughness based on Scenic Preference Variety, Scenic Amenity Variety, Elevation Variety and Slope Variety



Connectivity

- to the existing greenspace network
- Coastline
- waterways
- key public transport routes
- regional trails
- landscape corridors

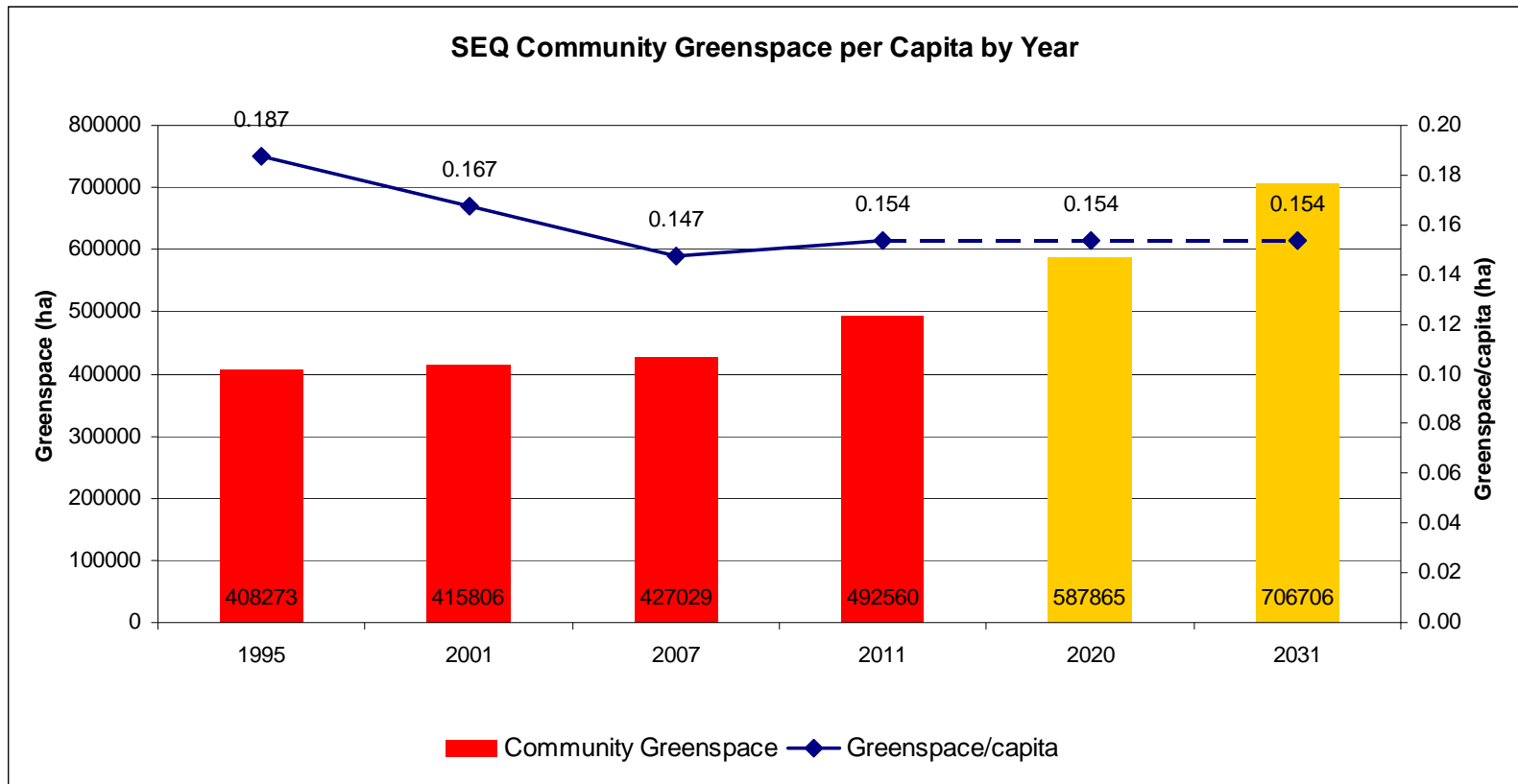
Regional GIS surrogates to assess:

- the general accessibility of sites to people and population centres
- connectivity between sites and other sites/landscapes, eg. coastline
- context within a connected tract of vegetation or other contiguous landscape area
- context within a strategic landscape corridor such as a major waterway corridor or bioregional wildlife corridor

Demand

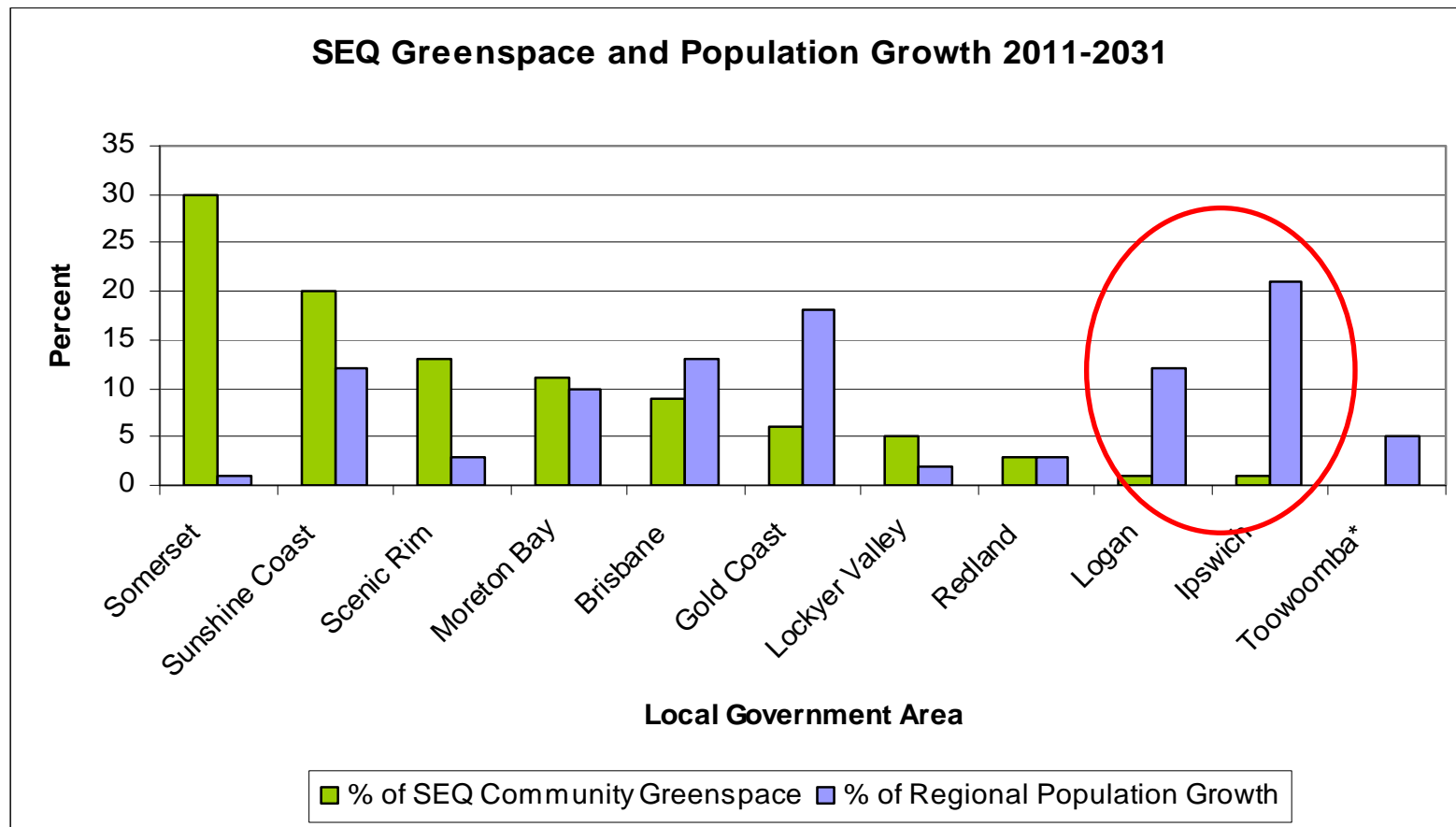
- Regional and subregional population growth
- Weighting accessibility and proximity to existing and future *priority growth areas*;
- extent, distribution and diversity of existing community greenspace supply within priority ‘catchments’.
- Priority growth areas are existing and future population centres supporting relatively larger proportions of regional population growth over the next 20 years.

Community greenspace per capita by year





% of regional growth and community greenspace by LGA





Network 2031 – ‘work in progress’

Regional landscape areas [\(link to SEQRP Principle 3.2\)](#)

- Mt Barney-Scenic Rim Precinct
- Mt Glenrock in Esk

Landscape corridors

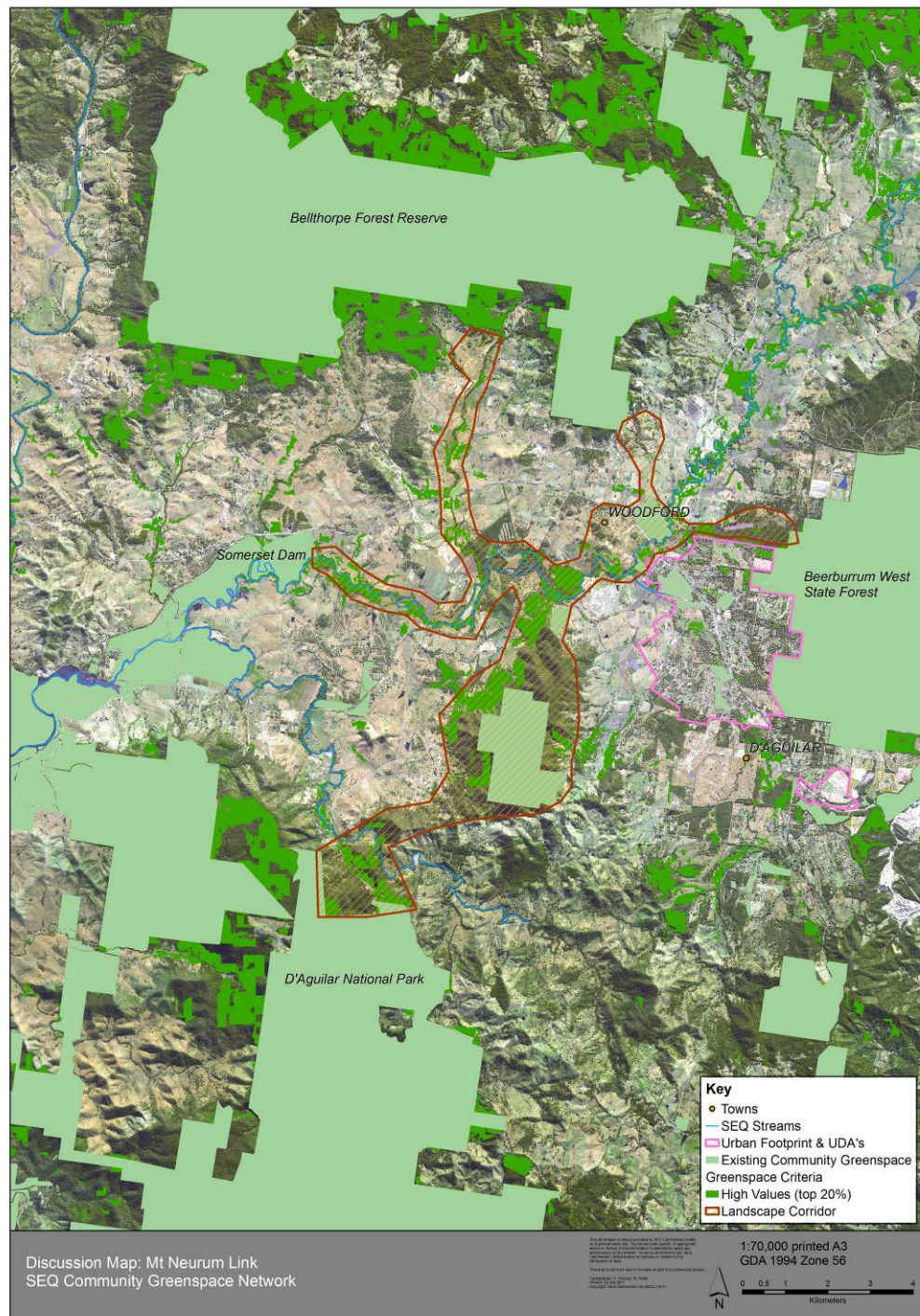
- Darlington Range-Pimpama R corridor (‘green wedge’)
- Brisbane River corridor link to BFP
- Logan/Albert River corridors (‘green wedge’)
- Maroochy River Trail/corridor
- Mountains to Mangroves Corridor/s
 - Camp Mountain to Boondall Wetlands (original M2M)
 - ‘Mt Nebo to Tinci Tamba’ corridor along Cabbage Tree Creek
- FGK Corridor (‘green wedge’) (include Wyaralong - Mt Barney)
- Mt Neurum ‘network’ (former ROSS purchase)



Future Network 2031 'work-in-progress'

Mt Neurum linkages

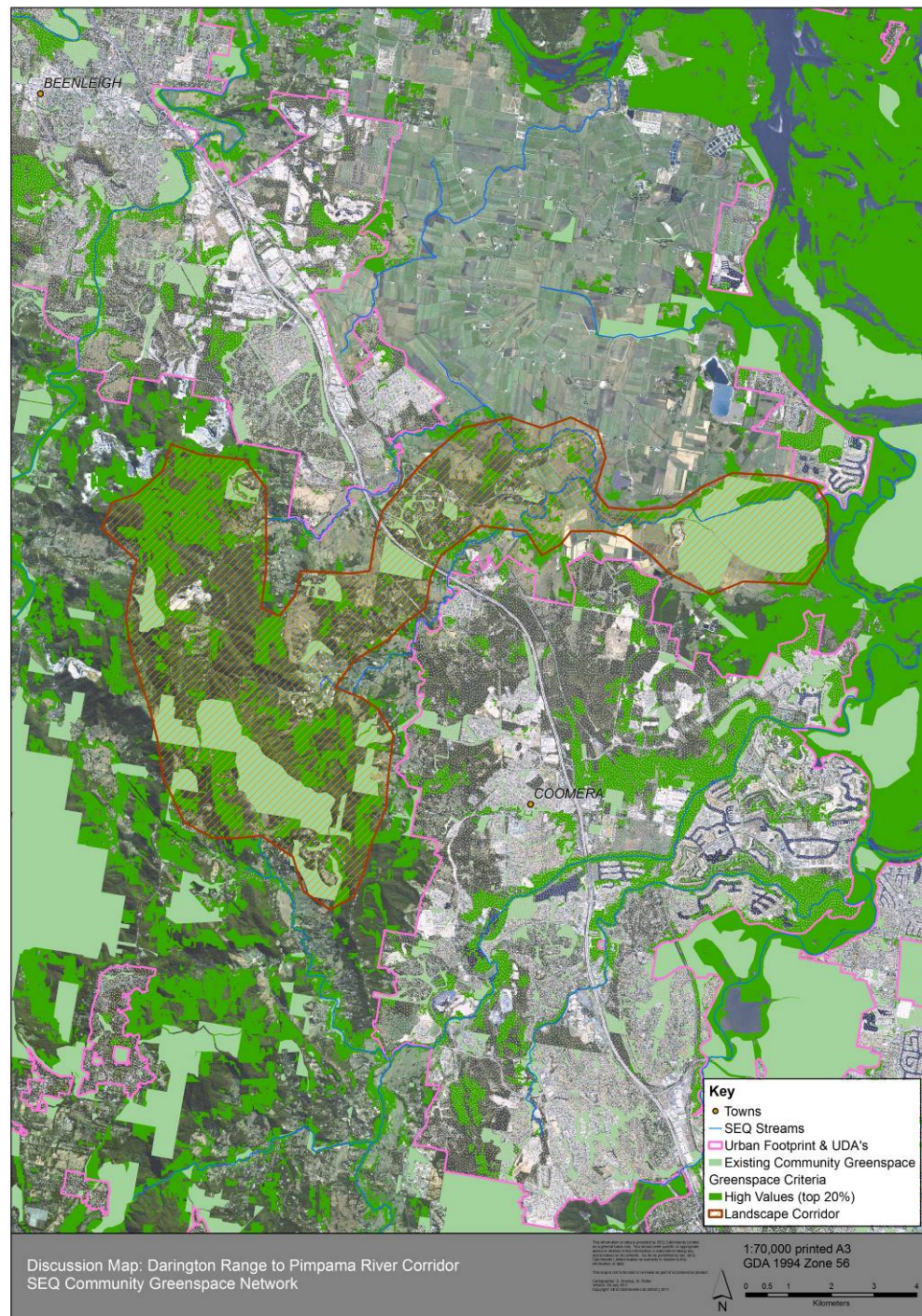
- Woodford
- Somerset Dam
- D'Aguilar Range
- Blackall Ranges
- Glasshouse Mountains





Landscape corridors – 'green wedges'

Darlington Range to Pimpama River





In Plan

- **Existing network**
- **Strategic planning: principles and strategies**
 - Greenspace vision
 - Urban greenspace
- **Future network**
 - regional decision support criteria
 - RLOSAC/ expert input
 - regional landscape settings: adapted from QNPWS landscape classification scheme and National Wilderness Inventory classes
 - **trails and corridors (value for money)**
 - **demand from priority growth areas**



Future modelling project

- Property-scale community greenspace evaluation model
- Applied to selected sites
- Can be used at different scales – from subregion to site
- Adapts MUMPS methodology previously used for Glen Rock
 - Regional Parks Discussion Paper
- Incorporates outdoor recreation opportunities/activities



Timeframes

- Draft by 30 August 2011
- Ministerial approval for public release
- Public consultation
- Review and finalise by the end of 2011



Questions?



Department of Local Government and Planning

PO Box 15009 City East Qld 4002 Australia

tel +61 7 3227 8548

info@dlgp.qld.gov.au

www.dlgp.qld.gov.au